

## PV SOLAR IBR ROOF MOUNTING STRUCTURE SOLUTION

The Valsa IBR roof mounting structure provides a solution for installing solar panels on IBR flat and pitched roofs found on commercial, industrial, and domestic buildings. Both a penetrative and not penetrative method of fixing is available. The solar mounting structure is positioned across or along the rib and can be flat in which case it follows the slope of the roof or elevated with an additional tilt to improve the harvesting of photovoltaic power.

It is a simple and versatile solution uses a penetrative method of fixing (a non-penetrative methods is available on request). All the components tested and approved by South Africa roof manufacturers, ensuring roof warranties and guaranties remain intact for PV solar installations on existing and new roofs.

The solution has been designed and manufactured to SABS standards, is in line with SANS regulations and take African building regulations into consideration. The roof mounting structure solution is ideally suited for African weather conditions.

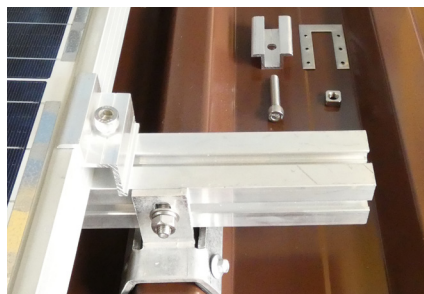
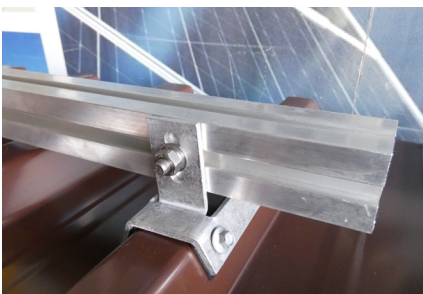
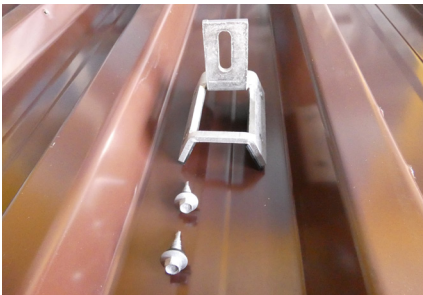
Custom made solutions can be designed and manufactured on request.

# CHARACTERISTICS

<b>Versatility</b>	<ul style="list-style-type: none"> <li>• Standard versatile mounting structure solutions and components for IBR roofs</li> <li>• Flexible design for improved PV Solar performance</li> <li>• Accommodate standard nuts and bolts</li> </ul>
<b>Design</b>	<ul style="list-style-type: none"> <li>• Structural engineering compliant</li> <li>• Standard components</li> <li>• Easy mechanical assembly</li> <li>• High quality material</li> </ul>
<b>Flexible</b>	<ul style="list-style-type: none"> <li>• Accommodate customer requirements</li> <li>• Both penetrative and non-penetrative option available</li> <li>• Quick and easy to install</li> </ul>
<b>Panel orientation</b>	<ul style="list-style-type: none"> <li>• Portrait and landscape</li> </ul>
<b>Cost effective</b>	<ul style="list-style-type: none"> <li>• Cost effective PV solar roof solution</li> </ul>
<b>Tools</b>	<ul style="list-style-type: none"> <li>• Standard equipment for all installations</li> </ul>
<b>Manufacture</b>	<ul style="list-style-type: none"> <li>• Locally manufactured</li> </ul>
<b>Long life span</b>	<ul style="list-style-type: none"> <li>• Aluminium structure has a long life</li> </ul>
<b>Maintenance</b>	<ul style="list-style-type: none"> <li>• Low maintenance</li> </ul>
<b>Warranty</b>	<ul style="list-style-type: none"> <li>• 10 years site dependant</li> </ul>

# SPECIFICATIONS

<b>Material</b>	<ul style="list-style-type: none"> <li>• Aluminium structure - Alloy 6063</li> </ul>
<b>Tilt</b>	<ul style="list-style-type: none"> <li>• Flat and elevated</li> </ul>
<b>Components</b>	<ul style="list-style-type: none"> <li>• Aluminium components</li> <li>• Stainless-steel fixing components</li> </ul>
<b>Certification</b>	<ul style="list-style-type: none"> <li>• SABS standards and SANS regulations</li> </ul>



**Valsa South Africa**  
 Laser Park, Erf. 115 Battleship Road,  
 Cnr Boat Turn Road, Honeydew,  
 Gauteng, 1724, South Africa  
**Tel** +27 (0) 11 794 1306 |  
 +27 (0) 61 288 2572 | +27 (0) 84 235 5282  
**E-mail** info@valsa.co.za  
[www.valsa.co.za](http://www.valsa.co.za)

**Valsa Kenya**  
 Casa Moko Plaza, Unit 1, North Airport  
 Road Eastern Bypass, Nairobi  
**Tel** +254 713 671 833  
**E-mail** info@valsa.co.ke  
[www.valsa.co.ke](http://www.valsa.co.ke)

**Valsa Zimbabwe**  
 7 Everret Close, Mount Pleasant,  
 Harare  
**Tel** +263 77 228 3889  
**E-mail** info@valsa.co.zw  
[www.valsa.co.zw](http://www.valsa.co.zw)