



## HARVEY TILE METAL SHEET ROOF MOUNTING STRUCTURE SOLUTION

The Valsa Harvey Tile roof metal sheet mounting structure provides a solution for installing solar panels, as part of the structure of the building, onto Harvey Tile metal sheet roofs found on domestic buildings. The solar mounting structure is fixed to the Harvey Tile metal roof sheet using special brackets, it follows the slope of the roof and is flat.

The solar mounting structure is fixed to the roof with special roof brackets, a simple and versatile solution with all the components tested and approved by South Africa roof manufacturers, ensuring roof warranties and guarantees remain intact for PV solar installations on existing and new roofs.

The solution has been designed and manufactured to SABS standards, is in line with SANS regulations and take African building regulations into consideration. The roof mounting structure solution is ideally suited for African weather conditions.

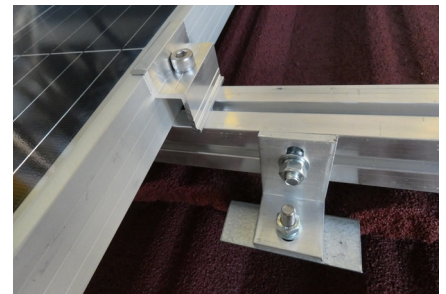
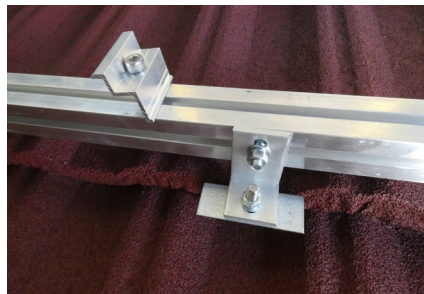
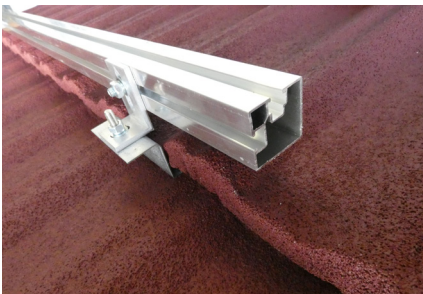
Custom made solutions can be designed and manufactured on request.

# CHARACTERISTICS

<b>Versatility</b>	<ul style="list-style-type: none"> <li>• Standard Harvey Tile mounting structure solutions for all site specifics</li> <li>• Flexible design for improved PV Solar performance</li> <li>• Accommodate standard nuts and bolts</li> </ul>
<b>Design</b>	<ul style="list-style-type: none"> <li>• Structural engineering compliant</li> <li>• Easy mechanical assembly</li> <li>• High quality material</li> </ul>
<b>Flexible</b>	<ul style="list-style-type: none"> <li>• Accommodate customer requirements</li> <li>• Quick and easy to install</li> </ul>
<b>Panel orientation</b>	<ul style="list-style-type: none"> <li>• Portrait and landscape</li> </ul>
<b>Cost effective</b>	<ul style="list-style-type: none"> <li>• Cost effective PV solar roof solution</li> </ul>
<b>Tools</b>	<ul style="list-style-type: none"> <li>• Standard equipment for all installations</li> </ul>
<b>Long life span</b>	<ul style="list-style-type: none"> <li>• Aluminium structure has a long life</li> </ul>
<b>Maintenance</b>	<ul style="list-style-type: none"> <li>• Low maintenance</li> </ul>
<b>Warranty</b>	<ul style="list-style-type: none"> <li>• 10 years site dependant</li> </ul>

# SPECIFICATIONS

<b>Material</b>	<ul style="list-style-type: none"> <li>• Aluminium structure - Alloy 6063</li> </ul>
<b>Tilt</b>	<ul style="list-style-type: none"> <li>• Flat</li> </ul>
<b>Components</b>	<ul style="list-style-type: none"> <li>• Aluminium components</li> <li>• Stainless-steel fixing components</li> <li>• Galvanised brackets</li> </ul>
<b>Certification</b>	<ul style="list-style-type: none"> <li>• SABS standards and SANS regulations</li> </ul>



**Valsa South Africa**  
Laser Park, Erf. 115 Battleship Road,  
Cnr Boat Turn Road, Honeydew,  
Gauteng, 1724, South Africa  
Tel +27 (0) 11 794 1306 |  
+27 (0) 61 288 2572 | +27 (0) 84 235 5282  
E-mail info@valsa.co.za  
www.valsa.co.za

**Valsa Kenya**  
Casa Moko Plaza, Unit 1, North Airport  
Road Eastern Bypass, Nairobi  
Tel +254 713 671 833  
E-mail info@valsa.co.ke  
www.valsa.co.ke

**Valsa Zimbabwe**  
7 Everret Close, Mount Pleasant,  
Harare  
Tel +263 77 228 3889  
E-mail info@valsa.co.zw  
www.valsa.co.zw