



PV SOLAR SLATE ROOF MOUNTING STRUCTURE SOLUTION

The Valsa slate roof mounting structure provides a solution for installing solar panels onto slate roofs, as part of the structure of the building to maximise the harvesting of photovoltaic power. The solution is suitable for commercial, industrial, and domestic buildings.

The solar mounting solution is positioned across or along the rib and is a flat application following the slope of the roof. It can be used on any type of roof sheeting where the substructure is made of wood as the fixing components are anchored to the wooden trusses of the roof. This is ideal where the roof sheeting is not strong enough for it provides a PV Solar solution without compromising the mechanical integrity of the solution.

It is a simple and versatile solution with all the components tested and approved by South Africa roof manufacturers which ensures that the roof warranties and guarantees remain intact for the PV solar installation.

The solution has been designed and manufactured to SABS standards, is in line with SANS regulations and take African building regulations into consideration. The roof mounting structure solution is ideally suited for African weather conditions.

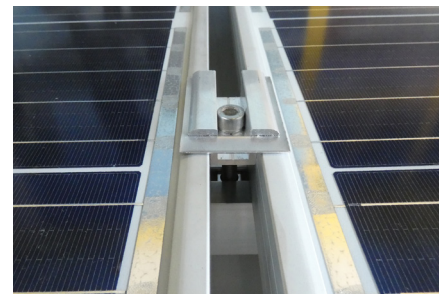
Custom made solutions can be designed and manufactured on request.

CHARACTERISTICS

Versatility	<ul style="list-style-type: none"> • Standard flat concrete roof mounting structure for all site specifics • Flexible design for improved PV Solar performance • Accommodate standard nuts and bolts
Design	<ul style="list-style-type: none"> • Structural engineering compliant • Easy mechanical assembly • High quality material
Flexible	<ul style="list-style-type: none"> • Accommodate customer requirements • Quick and easy to install
Panel orientation	<ul style="list-style-type: none"> • Portrait and landscape
Cost effective	<ul style="list-style-type: none"> • Cost effective PV solar roof solution
Tools	<ul style="list-style-type: none"> • Standard equipment for all installations
Project design	<ul style="list-style-type: none"> • Meets structural roof engineering requirements
Long life span	<ul style="list-style-type: none"> • Long life Aluminium structure
Maintenance	<ul style="list-style-type: none"> • Low maintenance
Warranty	<ul style="list-style-type: none"> • 10 years site dependant

SPECIFICATIONS

Material	<ul style="list-style-type: none"> • Aluminium structure - Alloy 6063
Tilt	<ul style="list-style-type: none"> • Flat
Components	<ul style="list-style-type: none"> • Aluminium components • Stainless-steel fixing components
Certification	<ul style="list-style-type: none"> • SABS standards and SANS regulations



Valsa South Africa
 Laser Park, Erf. 115 Battleship Road,
 Cnr Boat Turn Road, Honeydew,
 Gauteng, 1724, South Africa
Tel +27 (0) 11 794 1306 |
 +27 (0) 61 288 2572 | +27 (0) 84 235 5282
E-mail info@valsa.co.za
www.valsa.co.za

Valsa Kenya
 Casa Moko Plaza, Unit 1, North Airport
 Road Eastern Bypass, Nairobi
Tel +254 713 671 833
E-mail info@valsa.co.ke
www.valsa.co.ke

Valsa Zimbabwe
 7 Everret Close, Mount Pleasant,
 Harare
Tel +263 77 228 3889
E-mail info@valsa.co.zw
www.valsa.co.zw