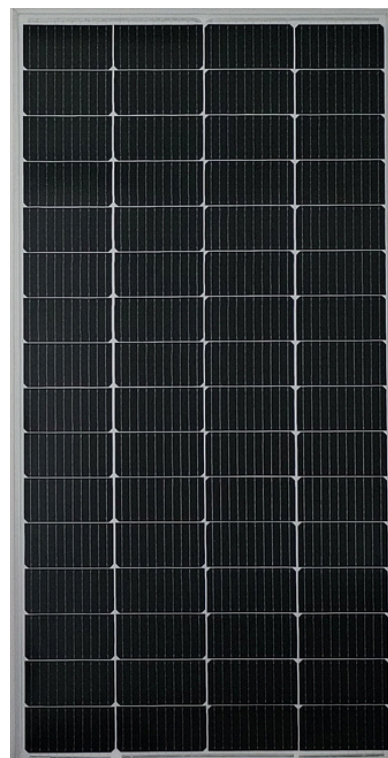


LEXRON

FOR A LIVEABLE WORLD



HALF CUT

MONOCRYSTALLINE MODULE

250W

POWER OUTPUT RANGE

20,97%

MAXIMUM EFFICIENCY

0~+5W

BINNING TOLERANCE

10BB

MULTI BUSBAR

PERC CELL TECHNOLOGY



HIGH POWER MODULE

High module conversion efficiency (up to 20.97%), through superior manufacturing technology



POSITIVE TOLERANCE

Guaranteed 0- +5W positive power output tolerance ensures high reliability



SELF CLEANING

Anti-reflective, hydrophobic coating improves light absorption and reduces surface dust



STRONG AIR RESISTANCE

Entire module certified to withstand high wind loads (2400 Pascal) and snow loads (5400 Pascal)*



HIGH PERFORMANCE

Excellent performance under low light environments (mornings, evenings and cloudy days)

SYSTEM CERTIFICATES

IEC61215/IEC61730/IEC61701/IEC62716

ISO 9001: Quality Management System

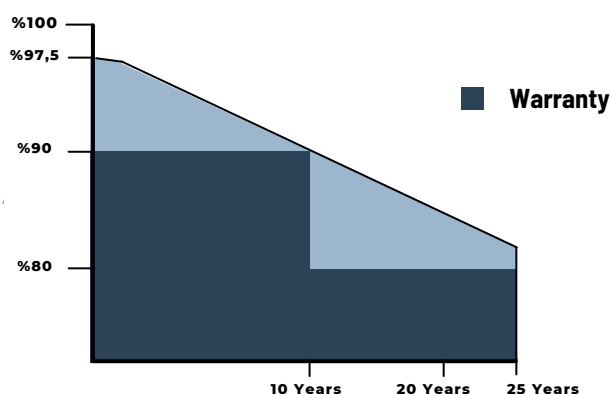
ISO 14001: Environmental Management

ISO 45001: Occupational Health and Safety

LEXRON

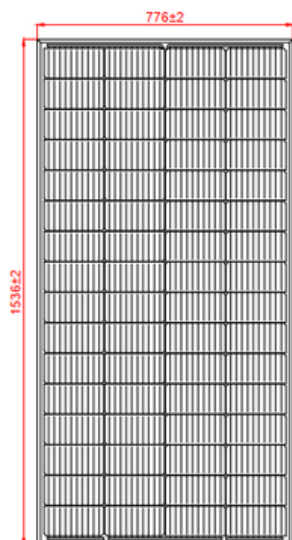
FOR A LIVEABLE WORLD

Industry-leading warranty

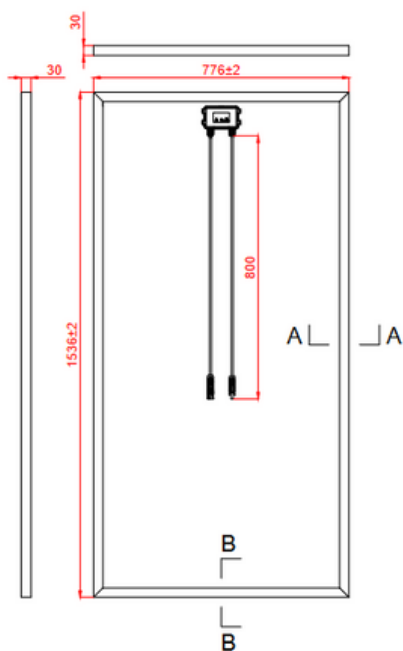


HALFCUT MONOCRYSTAL DATASHEET

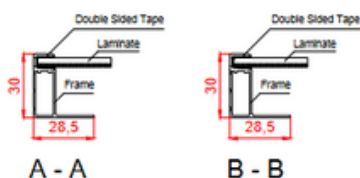
DIMENSIONS OF PV MODULE(mm)



Front View



Back View



ELECTRICAL DATA (STC)

| | |
|----------------------------|----------------|
| Nominal Maximum | 250W |
| Open CIRCUIT Voltage (Voc) | 21,36V |
| Max Power Voltage (Vmp) | 19,54V |
| Short Circuit Current(Isc) | 13,32A |
| Max Power Current (Imp) | 12,80A |
| Module Efficiency | %20,97 |
| Operating Temperature | -40°C~+85°C |
| Maximum System Voltage | 1000V (IEC/UL) |
| Maximum Series Fuse Rating | 15A |
| Application Classification | Class A |
| Power Tolerance(%) | %3 |

STC: Irradiance 1000W/m², Cell Temperature 25°C, Air Mass AM1.5.
*Measuring tolerance: ±3%.

MECHANICAL DATA

| | |
|---|--|
| Cell Type | Mono-crystalline, 10BB |
| Cell Arrangement | 64 (4X16) |
| Dimensions | 1536x 776 x 30 (mm) |
| Weight | 13 kg |
| Front Cover | 3.2mm Tempered Glass |
| Frame Material | Anodized Aluminum Alloy |
| J-BOX | IP67 |
| Cable | Photovoltaic Technology Cable 4.0mm ² |
| Connectors | MC4 or MC4 Comparable |
| Standard Packaging (Modules per Pallet) | 32pcs |

TEMPERATURE CHARACTERISTICS

| | |
|---|------------|
| Nominal Operating Cell Temperature (NOCT) | 45±2°C |
| Temperature Coefficient of Pmax | -0.350%/°C |
| Temperature Coefficient of Voc | -0.280%/°C |
| Temperature Coefficient of Isc | 0.048%/°C |

WARRANTY

- 12 year Product Workmanship Warranty
- 30 year Power Warranty
- 2% first year degradation
- 0.45% Annual Power Attenuation

