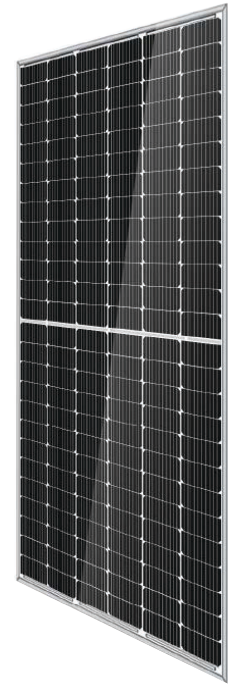


Half-Cut Mono-Crystalline

ARTsolar 600W TOPCon N-Type Module



MODULE

Design	144 CELL
Dimensions	2279 x 1134 x 30mm
Weight	28kg

OUR APPROACH

ARTsolar believes high quality solar power should be produced locally at globally competitive pricing. Meticulous manufacturing, testing and quality assurance standards, certified raw materials and in-house developed MES system ensures consistent traceable quality.

CERTIFICATIONS

Manufactured in line with:

SABS ISO 9001

ISO 14001

ISO 45001

IEC 61215

IEC 61730

CE

The IEC perscribed test with 25mm hail stones. (Speed of 23m/s)

LOCAL SUPPORT

Designed for the African Climate

2400Mpa wind & 5400Mpa mechanical loads

High Temperature Operation

Certified salt & ammonia resistance

PID resistance certified

High efficiency: Up to 23.21%

Earth leakage tested to 3600V DC

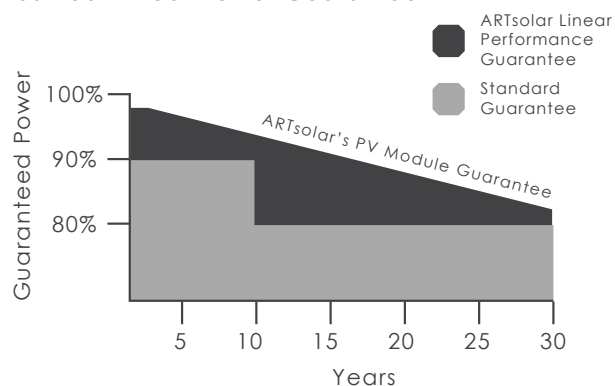
Electroluminescence (EL) tested

Quality control and traceability

LOCALLY GUARANTEED

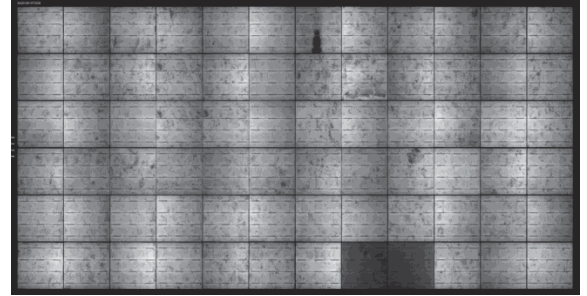
12 Year Product Guarantee

30 Year Linear Power Guarantee



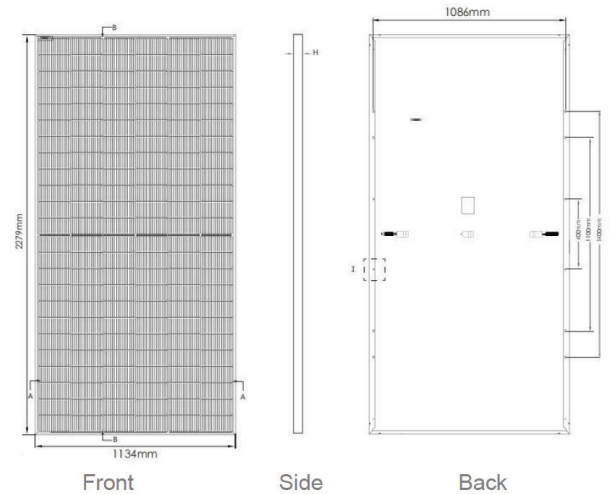
MULTIPLE ELECTRO-LUMINESCENCE (EL) TESTED

Multiple EL tests throughout the production line
 EL images can be requested with each purchase
 Make sure your PV module doesn't look like the image to the right. An EL looks like an X-Ray which spots cracks and power loss areas invisible to the naked eye.



MODULE SPECIFICATIONS

Solar Cells	Half-Cut, Monocrystalline
Solar Glass	3.2mm, tempered, low iron, high transparency solar safety glass with anti-reflective coating.
Encapsulation	EVA
Backsheet	White
Frame	Silver Anodized Aluminum Alloy
Junction Box	IP68 rated, 3 diodes, 4mm ² 1200mm cable, MC4 standard connectors



ELECTRICAL DATA

	STC	NOCT
Design	144 Cell	144 Cell
Pmax (Wp)	600 Wp	453 Wp
Vmp	45.20V	42.20V
Imp	13.27A	10.50A
Voc	51.46V	48.70V
Isc	14.61A	12.07A
Eff	23.21%	

STC - Irradiance 1000W/m², cell temp. @ 25°C
NOCT - Irradiance 800W/m², cell temp. @ 20°C **KEY**
Pmax(Wp) - Maximum Power | **Vmp** - Voltage at Max Power | **Voc**
 - Open Circuit Voltage | **Isc** - Short Circuit Current |
Imp - Max Power Current | **Eff** - Module Efficiency %
STC - Standard Test Conditions
NOCT - Nominal Operating Cell Temperature
**Figures are typical values of performance. Slight variances do occur, exact specifications available with each module.*

TEMPERATURE RATINGS

Nominal Module Operating Temp (NMOT)	45°C (±2°C)
Temp coefficient of Pmax	-0.31%/°C
Temp coefficient of Voc	-0.26%/°C
Temp coefficient of Isc	-0.04%/°C

MAXIMUM RATINGS

Operational Temp	-40°C to +85°C
Max System Voltage	1500VDC (IEC/UL)
Max Series Fuse Rating	25A
Mechanical Load	5400pa