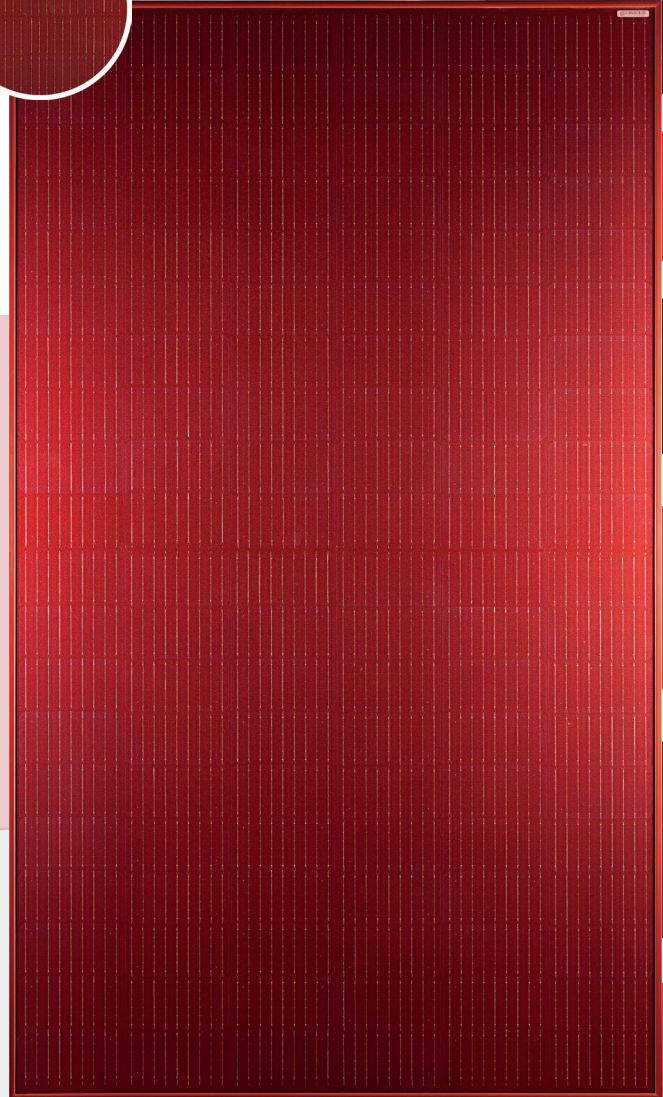
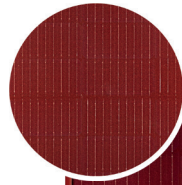


Product Information Sheet SNG 400 Watt PERC Technology

HC MONO
400 Watt

Highest quality with our cells
9 MBB PERC Technology



- ✔ **30 years**
Product Material & Workmanship
- ✔ **30 years**
Linear Performance Warranty
- ✔ **2 %**
1st-year Degradation
- ✔ **0.4 %**
Annual Degradation

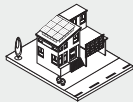
Quality and Safety

1 Industry-leading power output warranty
25 years / 88.4 %
30 years / 86.4 %

30-year warranty on materials & workmanship

Fire Test: Class 1

- ✔ **Anti-PID Guarantee**
Minimizes the risk of degradation caused by PID phenomena by optimizing cell production technology and material control.
- ✔ **Multi-busbar Technology**
Higher performance, higher reliability, and greater (electrical) resilience.



On-grid residential roof-tops

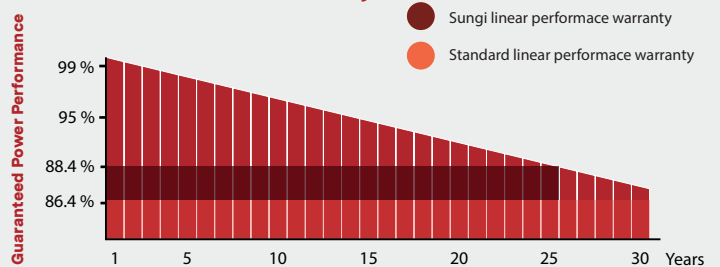


On-grid commercial Industrial roof-tops

Complete System and Product Certifications

IEC 61215 (2021), IEC 61730 (2023), IEC 61701, IEC 62716
ISO 9001:2015: Quality Management System
ISO 14001:2015: Environmental Management System
ISO 45001:2018: Occupational Health and Safety Management System
IEC 62941:2019: Quality System for PV Module Manufacturing

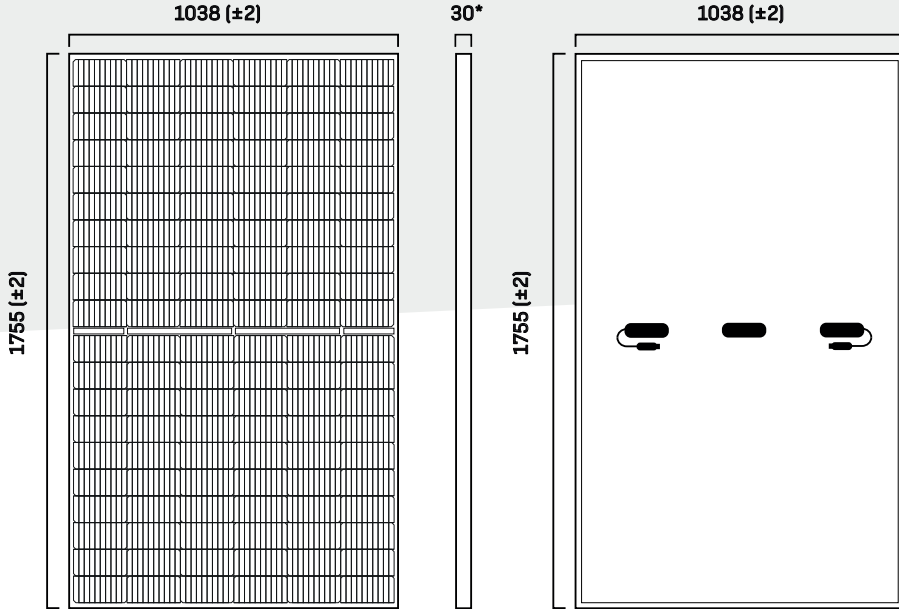
Premium Performance Warranty



21.95 %
Max Module Efficiency

30 Y Warranty
on materials & workmanship

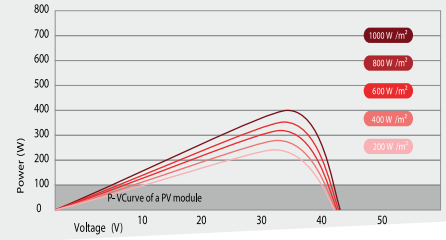
ENGINEERING DRAWINGS (mm)



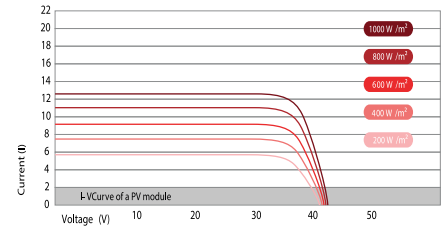
ELECTRICAL PERFORMANCE & TEMPERATURE

DEPENDENCE | SNG - 400

Power-Voltage Curves



Current-Voltage Curves



MODULE TYPE	SNG-400W
Testing Conditions	STC ⁽²⁾ / NMOT ⁽³⁾
Maximum Power at STC (Pmax)	400 Wp
Maximum Power Voltage (Vmp)	34.7 V / 32.48 V
Maximum Power Current (Imp)	11.53 A / 9.71 A
Open-Circuit Voltage (Voc)	42.20 V / 39.60 V
Short-Circuit Current (Isc)	12.13 A / 10.15 A
Module Efficiency (%)	21.95 %

ALL MODULES DATA	
Operating Temperature (DC)	- 40 °C to + 85 °C
Maximum System Voltage	1500 VDC
Maximum Series Fuse Rating	20 A
Power Output Tolerance ⁽¹⁾	± 3 %
Temperature Coefficients of Pmax	- 0.35 % / °C
Temperature Coefficients of Voc	- 0.28 % / °C
Temperature Coefficients of Isc	+0.048 % / °C
Nominal Operating Cell Temperature (NOCT)	45 ± 2 °C

Testing Conditions
STC²/NMOT³

Irradiance
**1000 W/m
800 W/m**

Module Temperature
**25 °C
20 °C**

AM
1.5
Wind Speed 1m/s

Fire Rating
Class 1

⁽¹⁾ Measurement Tolerances : Pmax (± 3 %), Isc & Voc (± 3 %)

⁽²⁾ STC (Standard Testing Condition) : Irradiance : 1000 W/m², Cell Temperature: 25 °C, AM : 1.5

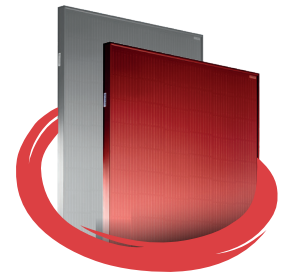
⁽³⁾ NMOT (Nominal Operating Module Temperature) : Irradiance : 800 W/m², NMOT Ambient Temperature: 20/25 °C, AM : 1.5, Wind Speed : 1 m/s

*or customized

Not applicable for installations in transition 5.0/ feed in tariff for italian market

Specifications included in this datasheet are subject to change without notice. SUNGI SOLAR reserves all the rights to final integrations.

COLOR & SIZE **FULLY**
CUSTOMIZED



TECHNICAL SPECIFICATION

Cell type	PERC Technology (166x83 mm)
Number of cells	120 (2x60)
Dimensions	1755x1038x30* mm
Weight	19.5 kg
Front Glass	3.2 mm anti-reflection
Frame	Anodized Aluminum Alloy RED Frame*
Junction Box	IP68 Rated
Output Cables	TUV 1x4.0 mm ² / UL 12 AWG*
Output Cables Length	1200 mm*
Connectors	MC 4

PACKAGING CONFIGURATION

40' Container

- 36 pcs per pallet
- 26 pallets
- 936 total pcs

20' Container

- 31 pcs per pallet
- 10 pallets
- 310 total pcs