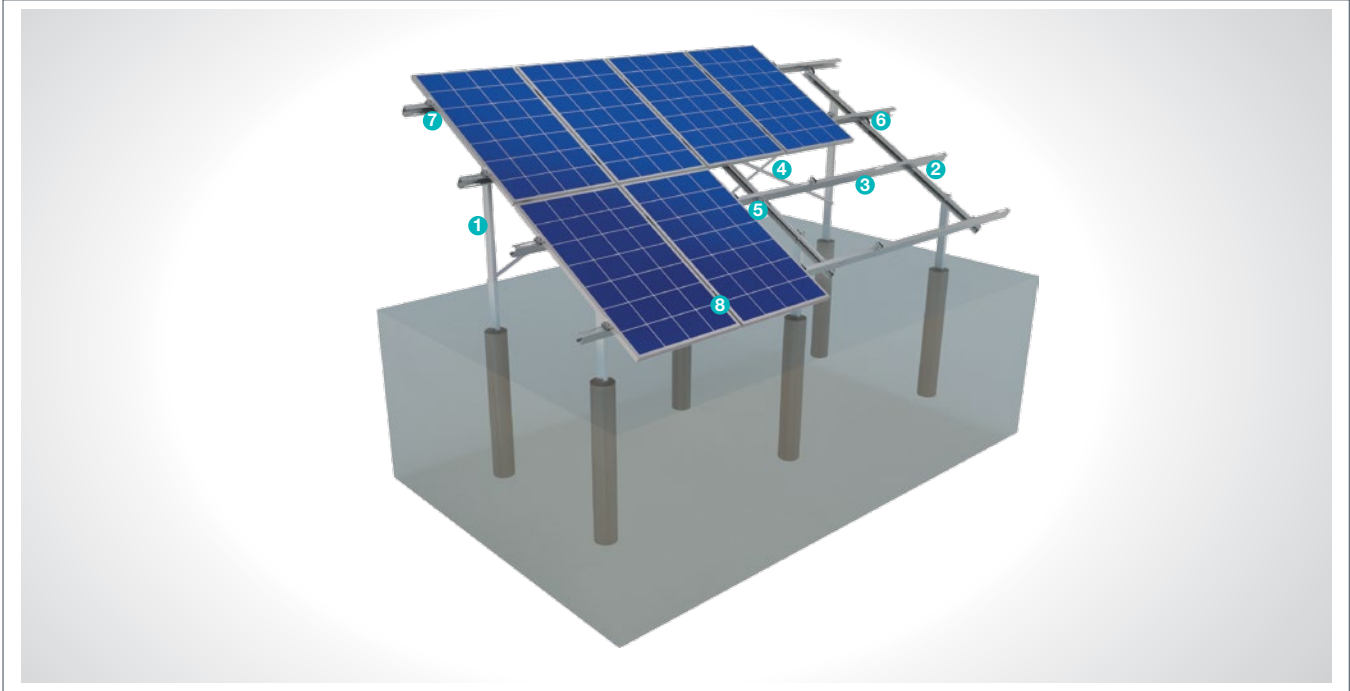


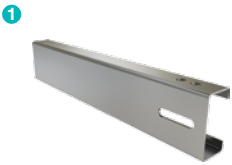
(KPT7) Concrete Embedded Steel Mounting System with 2 Vertical Panels

Overview

KPT7, is a concrete embedded steel support and mounting system with 2 vertical panels for open terrain solar panels. The system is an ideal application solution for PV projects installations on medium and large sized terrains with loose ground. Necessary strength is achieved by application in loose ground. After manufacturing the system components with high-technology machines and equipment, an excellent corrosion resistance is then achieved through hot-dip galvanized coating. The system, incorporating a high-level engineering design, provides assembly and cost advantages.



STEEL COLUMN



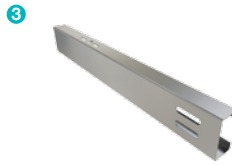
- **CK-90 / CK-100 / CK-120**
M12X30 Knurled Bolt
M12 Flanged Nut
M12 Washer

STEEL BEAM



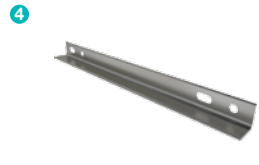
- **CR-100 / CR-120**
M12X30 Knurled Bolt
M12 Flanged Nut
M8X30 Knurled Bolt
M8 Flanged Nut
M8/M12 Washer

STEEL PURLIN



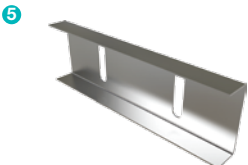
- **CA-90 / CA-100 / CA-110**
M12X30 Knurled Bolt
M12 Flanged Nut
M8X30 Knurled Bolt
M8 Flanged Nut
M8/M12 Washer

STEEL L BRACKET



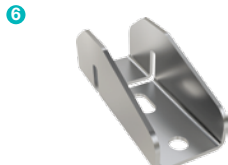
- **CL-40X40 / CL-50X50**
M12X30 Knurled Bolt
M12 Flanged Nut
M12 Washer

PURLIN CONNECTOR JOINING PIECE



- **C-90 / C-100 / C-110**
M12X30 Knurled Bolt
M12 Flanged Nut
M12 Washer

PURLIN CONNECTOR PIECE



- **U40**
M8X30 Knurled Bolt
M8 Flanged Nut
M8 Washer

PANEL SIDE RETAINER



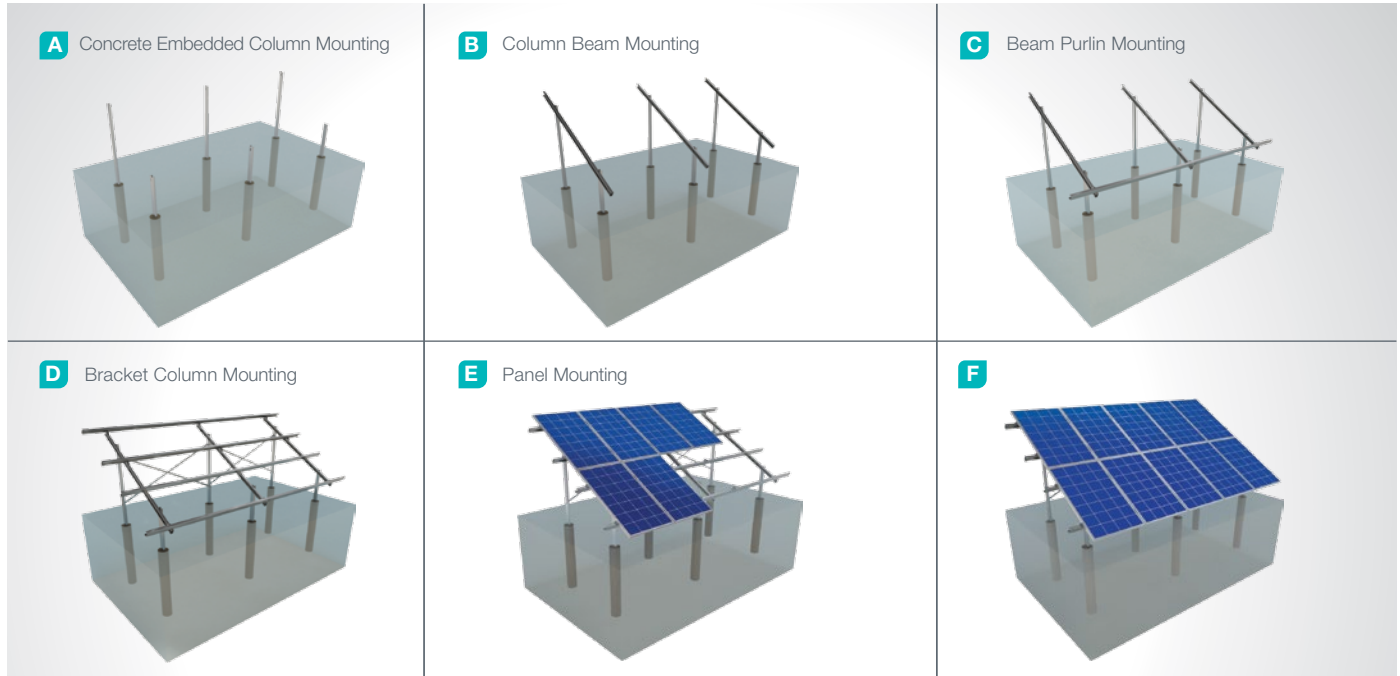
- **H30-H32-H40**
M8X30 Hex Bolt
M8 Flanged Nut

PANEL CENTER RETAINER



- **L70**
M8X30 Hex Bolt
M8 Flanged Nut

Installation Phase



Advantages

- Time saving for installation
- Cost saving for installation
- Suitable solutions for combiner box and inverter installation
- Suitable solutions for different terrains
- Suitable for loose ground
- Tailored design solutions for customer
- Customer oriented engineering solutions

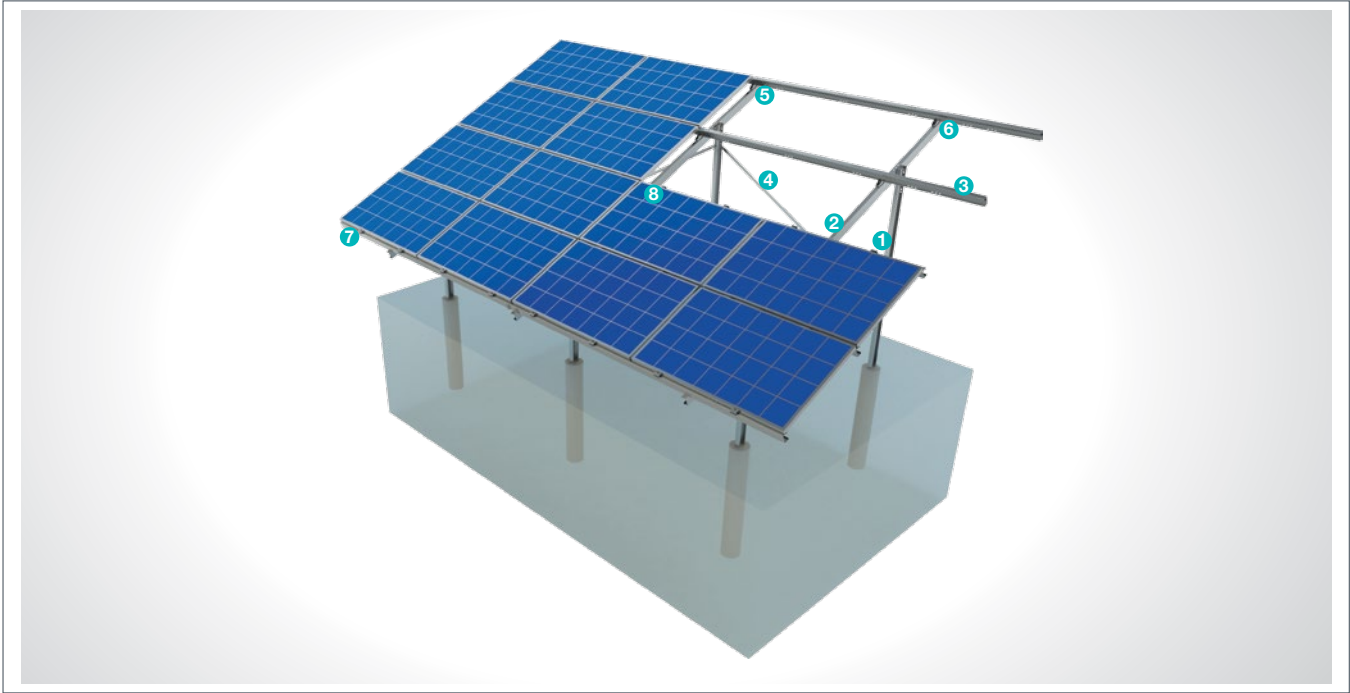
Technical Specifications

Description:	(KPT7) Concrete Embedded Steel Mounting System with 2 Vertical Panels
Mounting Method:	Concrete Embedded Column
Tilt Angle:	0-60 degrees
Module Application:	Framed and Unframed
Panel Height From Ground:	60 cm
Column and Beam Coating:	EN ISO 1461
Column and Beam Material:	EN 10025 / EN 10029
Optional Beam Material:	EN 10346
Panel Retainer:	EN AW 6063
Connector Equipment:	DIN 934 / DIN933 / DIN 912, A2-70 DIN 50979

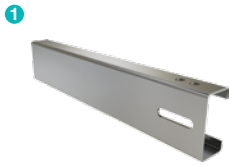
(KPT8) Concrete Embedded Steel Mounting System with 4 Horizontal Panels

Overview

KPT8, is a concrete embedded column steel support and mounting system with 4 horizontal panels for open terrain solar panels. The system is an ideal application solution for PV projects installations on medium and large sized terrains with loose ground. Necessary strength is achieved by application in loose ground. After manufacturing the system components with high-technology machines and equipment, an excellent corrosion resistance is then achieved through hot-dip galvanized coating. The system, incorporating a high-level engineering design, provides assembly and cost advantages.



STEEL COLUMN



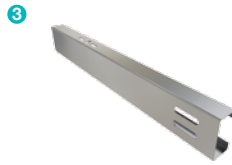
- **CK-90 / CK-100 / CK-120**
M12X30 Knurled Bolt
M12 Flanged Nut
M12 Washer

STEEL BEAM



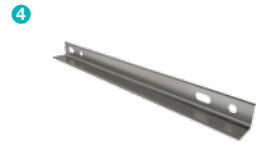
- **CR-100 / CR-120**
M12X30 Knurled Bolt
M12 Flanged Nut
M8X30 Knurled Bolt
M8 Flanged Nut
M8/M12 Washer

STEEL PURLIN



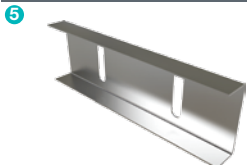
- **CA-90 / CA-100 / CA-110**
M12X30 Knurled Bolt
M12 Flanged Nut
M8X30 Knurled Bolt
M8 Flanged Nut
M8/M12 Washer

STEEL L BRACKET



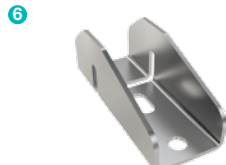
- **CL-40X40 / CL-50X50**
M12X30 Knurled Bolt
M12 Flanged Nut
M12 Washer

PURLIN CONNECTOR JOINING PIECE



- **C-90 / C-100 / C-110**
M12X30 Knurled Bolt
M12 Flanged Nut
M12 Washer

PURLIN CONNECTOR PIECE



- **U40**
M8X30 Knurled Bolt
M8 Flanged Nut
M8 Washer

PANEL SIDE RETAINER



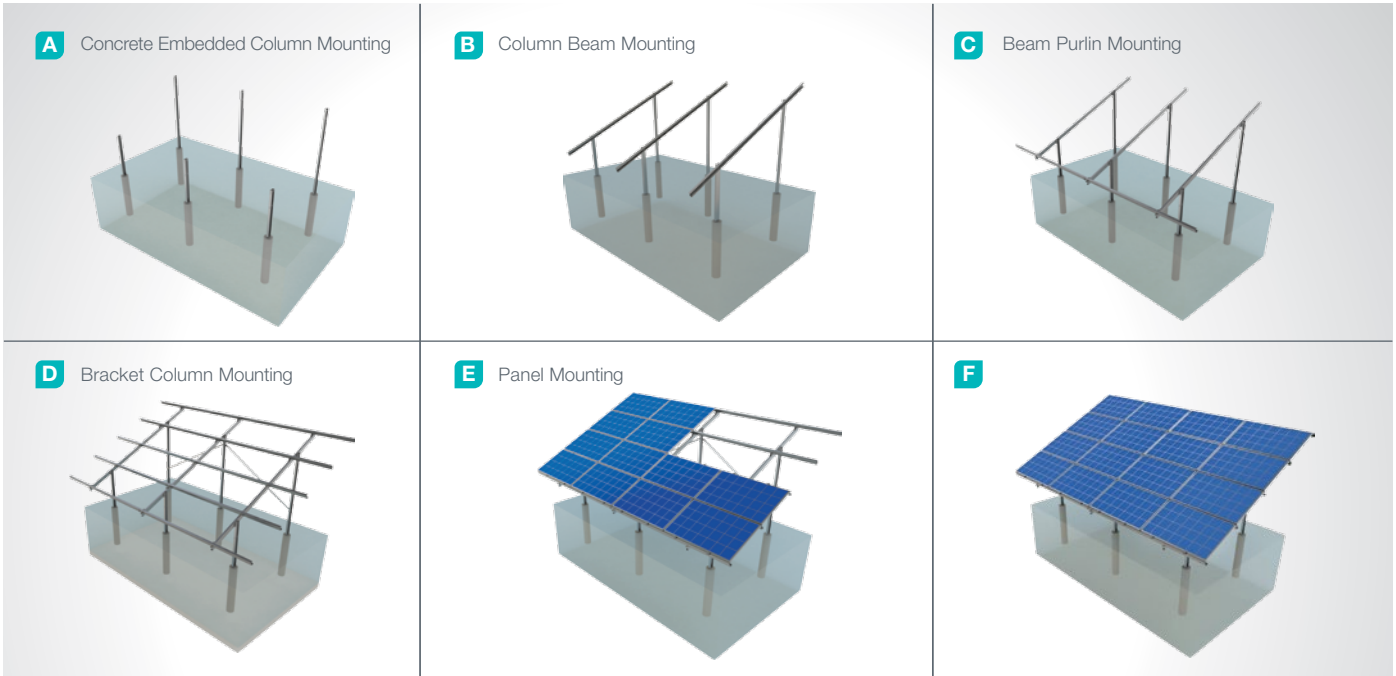
- **H30-H32-H40**
M8X30 Hex Bolt
M8 Flanged Nut

PANEL CENTER RETAINER



- **L70**
M8X30 Hex Bolt
M8 Flanged Nut

Installation Phase



Advantages

- Time saving for installation
- Cost saving for installation
- Suitable solutions for combiner box and inverter installation
- Suitable solutions for different terrains
- Suitable for loose ground
- Tailored design solutions for customer
- Customer oriented engineering solutions

Technical Specifications

Description:	(KPT8) Concrete Embedded Steel Mounting System with 4 Horizontal Panels
Mounting Method:	Concrete Embedded Column
Tilt Angle:	0-60 degrees
Module Application:	Framed and Unframed
Panel Height From Ground:	60 cm
Column and Beam Coating:	EN ISO 1461
Column and Beam Material:	EN 10025 / EN 10029
Optional Beam Material:	EN 10346
Panel Retainer:	EN AW 6063
Connector Equipment:	DIN 934 / DIN933 / DIN 912, A2-70 DIN 50979