

Pitched BaseLine

Complete Flexibility

The Pitched BaseLine system enables an easy installation of PV-modules on pitched roofs of old and new buildings with almost arbitrary covering. Projects can be realized precisely with a material-optimized rail design and an outer click technology thanks to the options of different forms of roof connections, material thicknesses and the ease of installation.

Transparent cost efficiency

Easy and fast installation leads to a long-term development of the Pitched BaseLine systems. According to the motto „cost-efficiency“ on installation time the system offers a lot of advantages. A few tools only, design flexibility and pre-assembly of components.

Safe and fast planning

Our Software allows customers to configure their projects from the comfort of their office. Additional benefits include:

- Instant cite specific static verification based on national norms, providing security for both installer and proprietor.
- Instant ready-to-order bill of material (BOM) and pricing for a quick turnaround
- Detailed drawings of the module array and rail plan for secure and easy installation

Your benefits are threefold: Effective planning during the consultation phase, simple installation and increased security throughout the life span of your Mounting System.

Maximum service life

All components are made of extruded aluminium and stainless steel.

This choice of material guarantees both full recyclability and a maximum service life due to high resistance to corrosion.



On-roof



Framed module



Frameless module



Orientation portrait



Orientation landscape



Double Roman Tiles



Slate



Plain Tiles



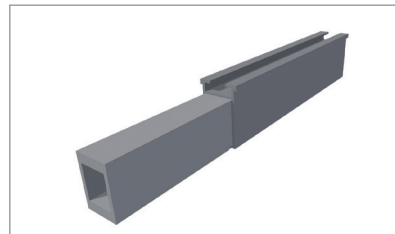
Corrugated metal



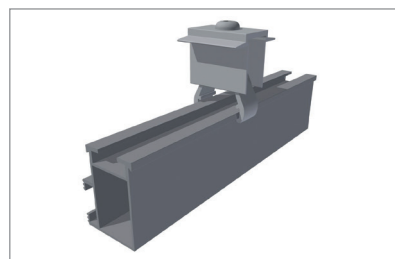
Bitumen shingles



Application	Pitched roof – on-roof
Roof cladding	Suitable for most types of roof cladding
Roof slope	Up to 60° ¹
Building height	Up to 20 m ¹
PV modules	Framed, frameless
Module orientation	Portrait, Landscape
Size of module array	Any size possible ²
Position of the module array	No special requirements
Distance between roof fixing points	Up to 2 m ¹
Standards	Eurocode 1 – Action on structures Eurocode 9 – Design of aluminium structures
Supporting profiles	Extruded Aluminium (EN AW 6063 T66)
Hooks, small parts	Stainless steel (V2A)
Colour	Aluminium: plate finish; on request: Visible components available in black
Warranty	10 years ³



Inner splice



Module clamp with outer click mechanism



Telescoping end piece



Roof hook with rail connection

¹ Different maximum values may apply, depending on site, building, choice of roof fixations and module type. Using the Pitched BaseLine calculation tool, you can have the exact values for your specific project calculated quickly and easily.

² Due to thermal expansion of the material, we recommend an interruption of the array after 12 m.

³ Please find the exact terms in the Mounting Systems GmbH warranty document.