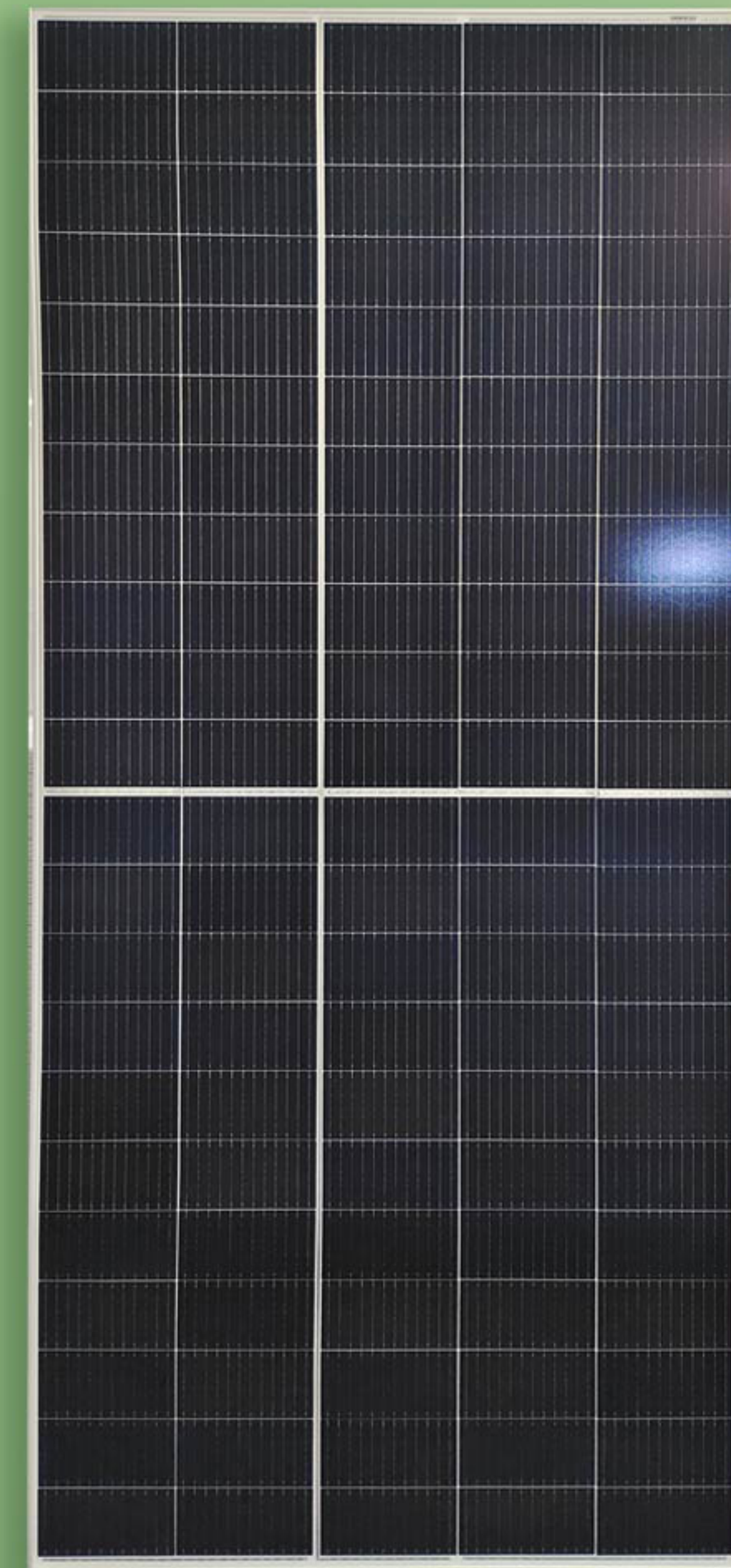


INE-55MH SERIES 210MM 110CELLS

535-555w



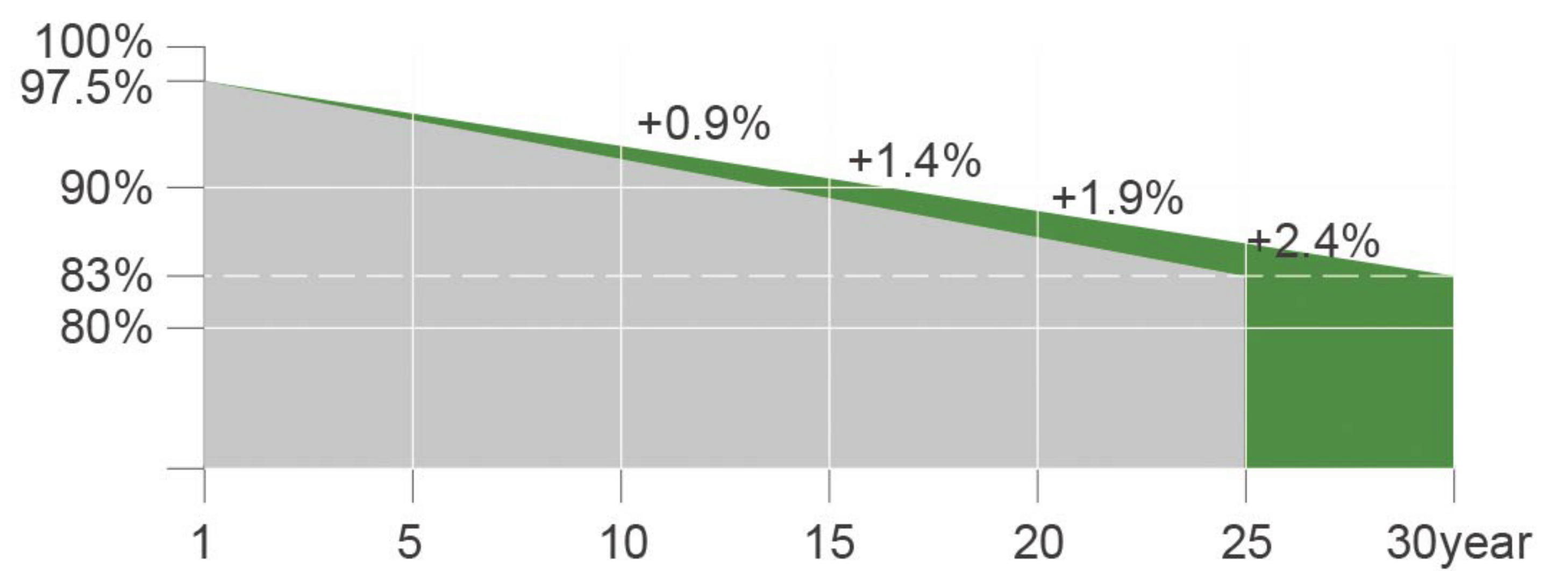
PRODUCT CERTIFICATES



SYSTEM CERTIFICATES

IEC 61215 / IEC 61730
 ISO 9001 : Quality Management System
 ISO 14001 : Environment Mangement System
 OHSAS 18001 : Occupational Health and Safety Management System

WARRANTY



INE-55MH SERIES 210MM 100CELLS

ELECTRICAL PARAMETERS AT STC

Module Type	INE-535-55MH	INE-540-55MH	INE-545-55MH	INE-550-55MH	INE-555-55MH
Rated Maximum Power(Pmax) [W]	535	540	545	550	555
Open Circuit Voltage(Voc) [V]	37.30	37.50	37.70	37.90	38.10
Maximum Power Voltage(Vmp) [V]	31.00	31.20	31.40	31.60	31.80
Short Circuit Current(Isc) [A]	18.36	18.41	18.47	18.52	18.56
Maximum Power Current(Imp) [A]	17.28	17.33	17.37	17.40	17.45
Module Efficiency [%]	20.4	20.6	20.8	21.0	21.2

STC: Irradiance 1000 W/m² module temperature 25°C AM=1.5

ELECTRICAL PARAMETERS AT NOCT

Module Type	INE-535-55MH	INE-540-55MH	INE-545-55MH	INE-550-55MH	INE-555-55MH
Rated Maximum Power(Pmax) [W]	405	409	413	417	420
Open Circuit Voltage(Voc) [V]	35.10	35.30	35.50	35.70	35.90
Maximum Power Voltage(Vmp) [V]	28.80	29.00	29.20	29.40	29.60
Short Circuit Current(Isc) [A]	14.80	14.84	14.88	14.92	14.96
Maximum Power Current(Imp) [A]	14.06	14.10	14.15	14.19	14.23

NOCT: Irradiance 800 W/m² ambient temperature 20°C wind speed: 1m/s





MECHANICAL SPECIFICATION

Cell Type	Monocrystalline
Cell Dimensions	210mm
Cell Arrangement	110(5*22)
Weight	28.6kg
Module Dimensions	2384*1096*35mm
Cable	4.0 mm ² , wire length: 900 mm or Customized Length
Front Glass	3.2 mm AR coating tempered glass, low iron
Frame	Anodized aluminium alloy
Junction Box	IP67/IP68
Connector	MC4 Compatible
Mechanical Load	Front side 5400Pa/ Rear side 2400Pa

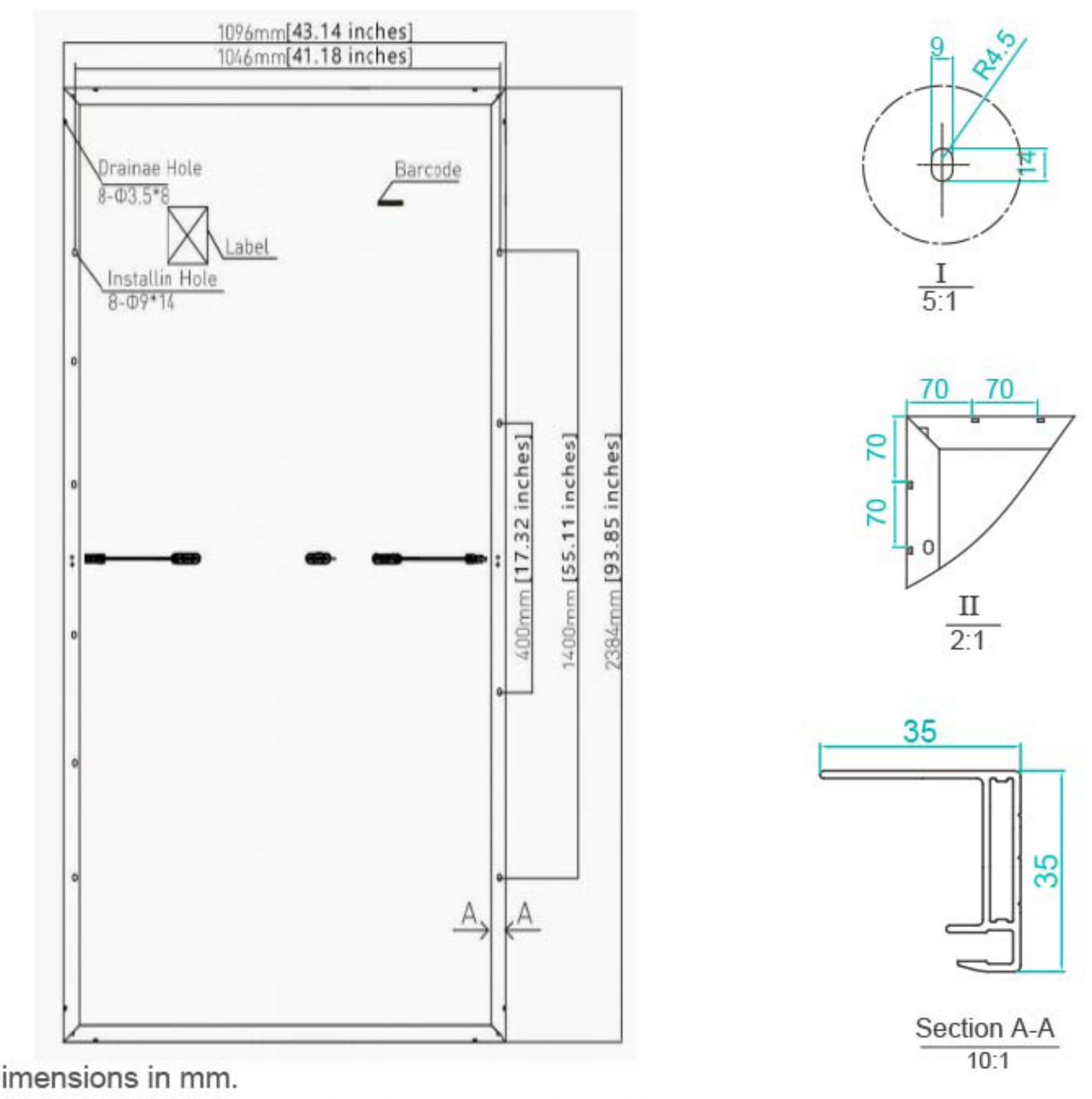
OPERATING CONDITIONS

Power Tolerance (W)	(0,+4.99)
Maximum System Voltage (V)	1000VDC / 1500VDC
Pmax Temperature Coefficient	-0.36 %/°C
Voc Temperature Coefficient	-0.28%/°C
Isc Temperature Coefficient	+0.05 %/°C
Nominal Operating Cell Temperature	45±2 °C
Operating Temperature	-40°C-+85°C
Maximum Series Fuse	25A

PACKING CONFIGURATION

Packaging Material	Wooden Pallet/Carton
Quantity/Pallet	31pcs/pallet
Quantity/Container	620pcs/40HQ

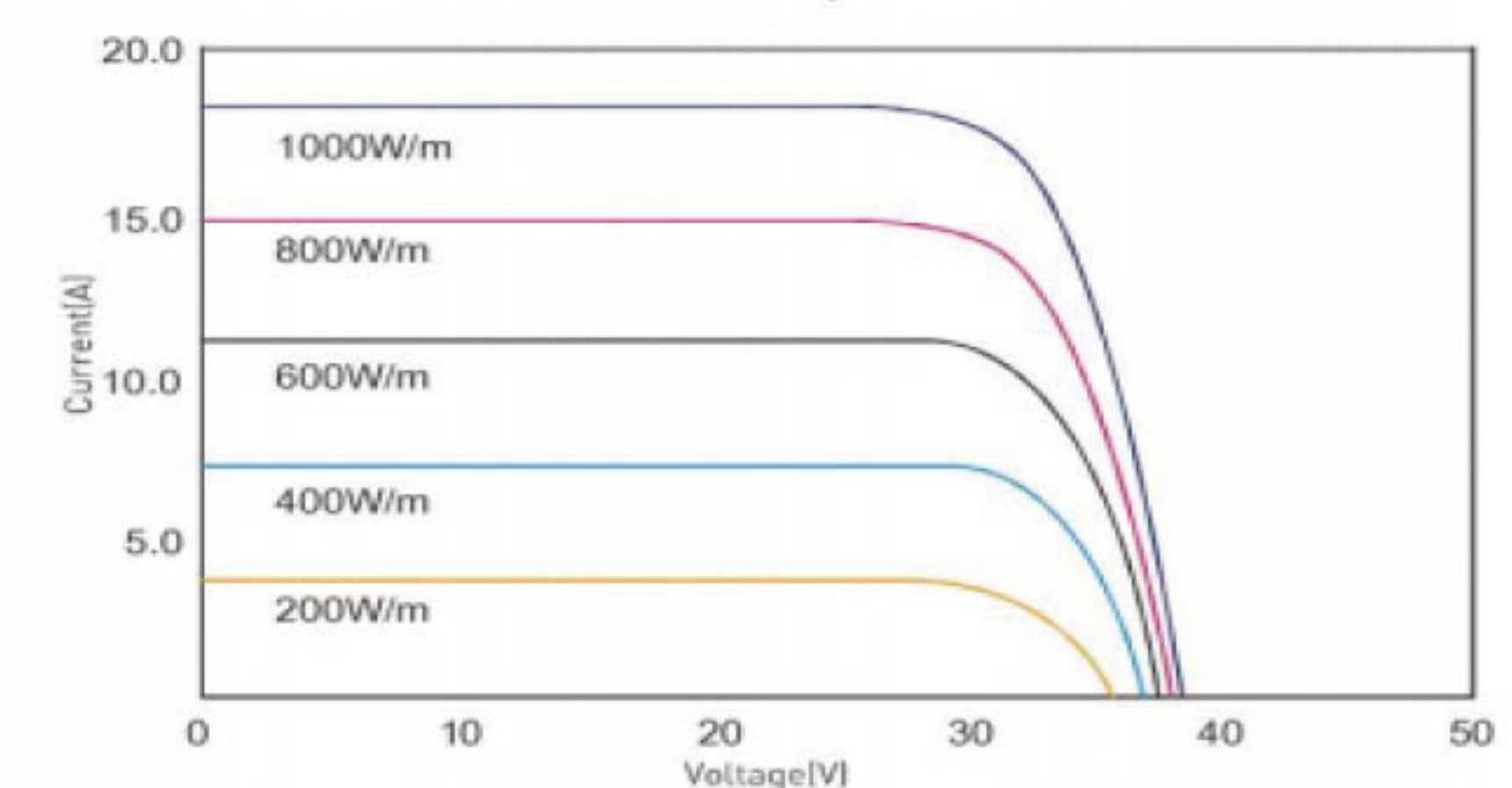
Technical drawing(INE-XXX-55MH)



* All Dimensions in mm.
 * The above drawing is a graphical representation of the product.
 For engineering quality drawings please contact IDEAL NEW ENERGY.

I-V Curve

I-V Curve at Different Temperature (545W)



P-V Curve at Different Irradiation (545W)

