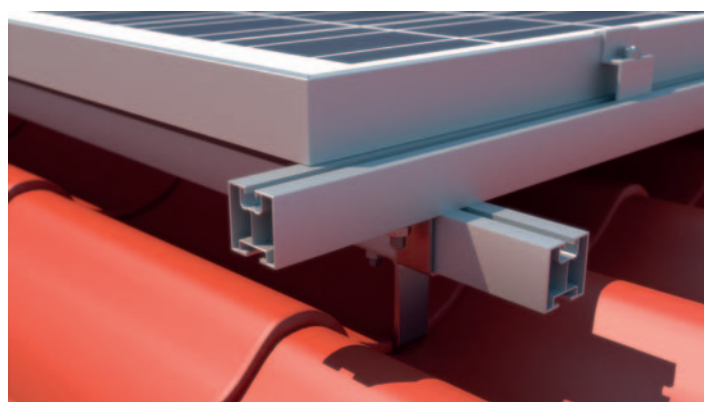
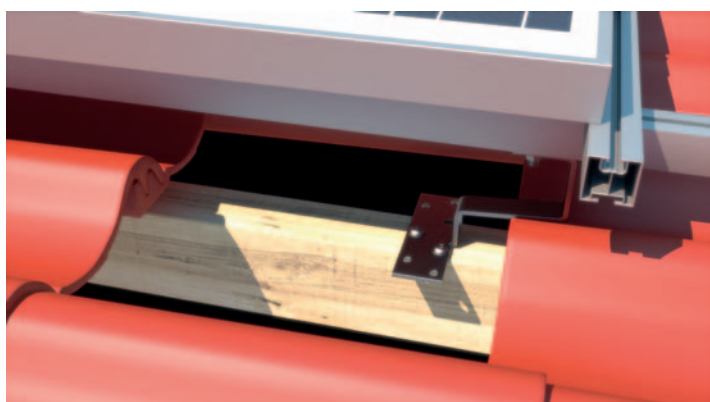
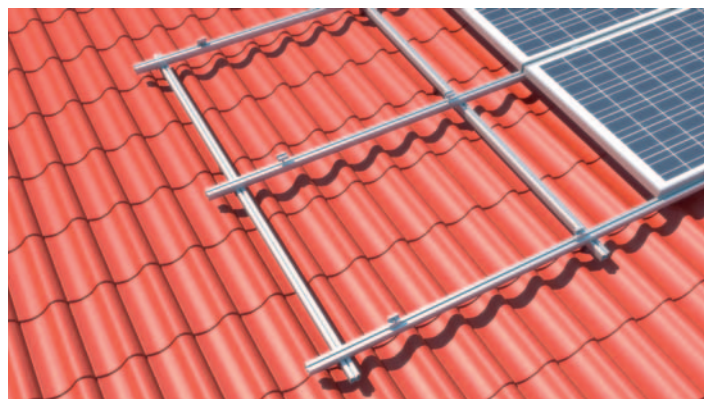


# SYSTEM REM-05 HORIZONTAL

## PANTILE ROOF I



**Art. 0111**  
Mounting Rail 40 type I  
Measurements: 40x40  
Length: 6200mm, 3100mm, 2070mm  
Joining screws: top M8, bottom M10  
Material: AL6060T6



**Art. 007**  
Pantile Roof Hook  
Plate: 150x50x5, (7x)Hole: Ø9mm  
Bar: 30x5, Long hole: 11x30  
Purpose: ceramic tile, concrete tile  
Material: A2 1.4301 shot blasting



**Art. 0129**  
Hammerhead screws 28/15  
Measurements:  
M8 16 +70  
M10 16+100  
Use: Mounting Rail Art. 0110  
Material: A2 1.4301 stainless steel



**Art. 0134**  
Hexagon flange nuts with serration  
DIN 6923  
M6  
M8  
M10  
M12  
Material: 1.4301 A2



**Art. 0132**  
Hexagon socket cap screws DIN 912  
with serration  
M8 12+60  
Material: A2 1.4301 stainless steel



**Art. 080**  
T-slot nuts, self aligning with spring ball  
M8  
Used with hexagon socket cap screw  
Art. 0132  
Use: for Mounting Rails Art. 0109, Art. 0110, Art. 062, Art. 0111, Art. 0112  
Material: AL 6060T6



**Art. 0147**  
Click  
M8  
Material: Aluminium  
for rails: Art. 0109, Art. 0111



**Art. 073**  
Middle Clamp  
Length: 50mm (standard)  
Length: 60mm – 100mm  
Height: 30mm  
Thickness: 3mm  
Colors: plain aluminium/black  
Material: AL 6060T6



**Art. 075**  
End clamp  
Length: 50 (standard)  
Length: 70mm  
Height: from 30mm to 50mm  
Thickness: 3mm  
Colors: plain aluminium/black  
Material: AL 6060T6



**Art. 0127**  
Screw TCS with serration  
M6 60+160  
M8 60+400  
Use: Roof Hook  
Material: A2 1.4301 stainless steel



**Art. 042**  
Cross Rail Connector  
for mounting rails: Art. 0111, Art.062  
(x1) M10  
Use: Cross Mounting two Rails  
Material: A2 1.4301 stainless steel