

# PIKCELL GROUP

## MONO PERC MODULE

PiK - 440

PiK - 460

*Best in class quality PiKCELL Group production line is fully automated and include multiple quality checks throughout the production process including Cell Testing, 100% Visual Mirror Inspection, EL Testing and PV Sun Simulator Testing*



High conversion efficiency  
High module efficiency to guarantee power output.



Excellent loading capability  
2400Pa wind loads, 5400Pa snow loads.

0 to +5W

0 to +5W positive tolerance  
Detailed information in Electrical Specifications



Self-cleaning glass  
Coating glass for self-cleaning, reduce surface dust.



Outstanding low irradiation performance  
Excellent module efficiency even in the weak light conditions, such as morning or cloudy.

48

48-hour responsive service



Standard tiered warranty  
Linear performance warranty

12

12-year warranty on materials and workmanship

25

25-year performance warranty

Bldv. Partizanski Odredi 40-1/5  
1000 Skopje  
Tel: +389(2) 3109 077  
Fax: +389(2) 3256 588

www.pikcellgroup.mk  
E-mail: [contact@pikcellgroup.mk](mailto:contact@pikcellgroup.mk)



ProCredit Bank AD Skopje  
Account No. 380176950607221  
IBAN: MK07  
SWIFT: PRBUMK22XXX  
Komerrijalna Banka AD Skopje  
Account No. 0270100238818  
IBAN: MK07300701002388107  
SWIFT: KOB SMK2X

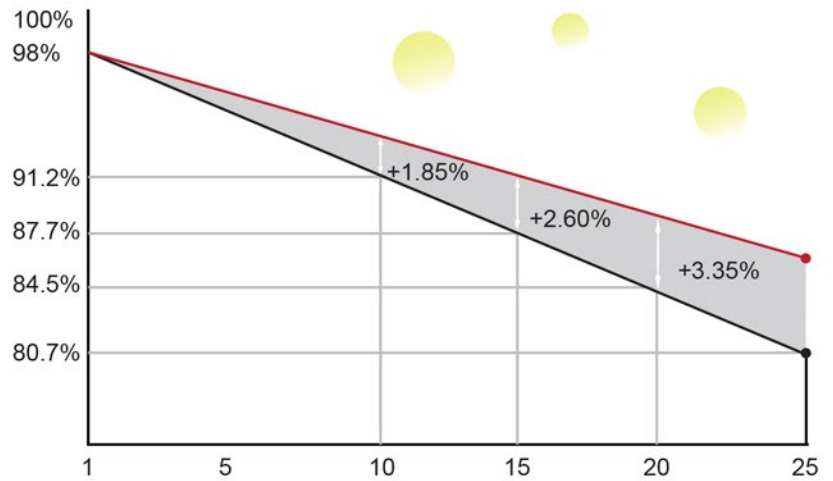


EN ISO 9001 : 2015  
No 4410021320170  
EN ISO 14001 : 2015  
No 4410421320170  
EN ISO 45001 : 2018  
No 4412621320170

## MECHANICAL PARAMETERS

Cell Orientation	144(6X24)
Junction Box	IP68, three diodes
Output Cable	4mm <sup>2</sup> , positive 400 / negative 200mm length can be customized
Glass	Single glass, 3.2mm coated tempered glass
Frame	Anodized aluminum alloy frame
Weight	23.3kg
Dimensions	2094x1038x35mm
Packaging	30pcs per pallet / 150pcs per 20' GP / 660pcs per 40' HC

## 25-Year Power Warranty



## ELECTRICAL CHARACTERISTICS

Model Type	PiK440	PiK460
Power Class	440	460
Maximum Power (Pmax/W)	440	460
Open Circuit Voltage (Voc)/V	48.9	49.7
Short Circuit Current (Isc)/A	11.46	11.73
Maximum Power Voltage (Vmp)/V	41.1	41.9
Maximum Power Current (Imp)/A	10.71	10.98
Module Efficiency(%)	20.2	21.2

## Operating Parameters

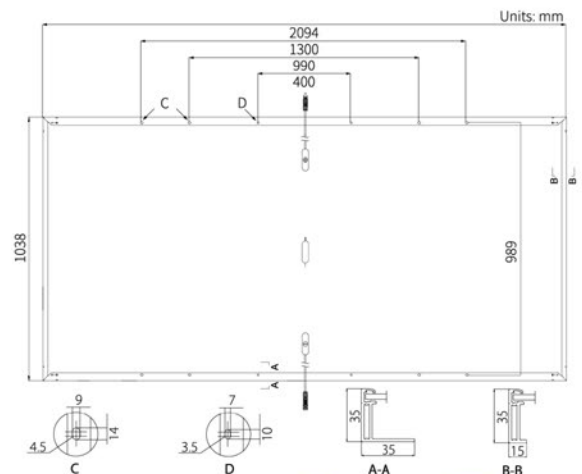
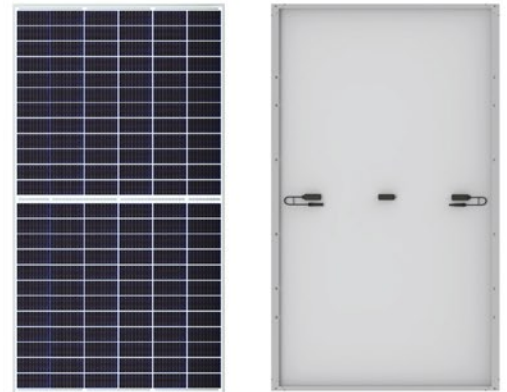
Operational Temperature	-40°C ~ +85°C
Power Output Tolerance	0 ~ + 5 W
Voc and Isc Tolerance	±3%
Maximum System Voltage	DC1500V (IEC/UL)
Maximum Series Fuse Rating	20A
Nominal Operating Cell Temperature	45±2°C
Protection Class	Class II
Fire Rating	UL type 1 or 2

## Mechanical Loading

Front Side Maximum Static Loading	5300Pa
Rear Side Maximum Static Loading	2400Pa
Hailstone Test	25mm Hailstone at the speed of 23m/s

## Temperature Ratings (STC)

Temperature Coefficient of Isc	+0.048%/°C
Temperature Coefficient of Voc	-0.270%/°C
Temperature Coefficient of Pmax	-0.350%/°C



Note: the specifications are obtained under the Standard Test Conditions (STCs): 1000W/m<sup>2</sup> solar irradiance, 1.5 Air Mass, and cell temperature of 25°C. The NOCT is obtained under the Test Conditions: 800W/m<sup>2</sup>, 20°C ambient temperature, 1m/s wind speed, AM 1.5 spectrum.

Please contact [contact@pikcellgroup.mk](mailto:contact@pikcellgroup.mk) for technical support. The actual transactions will be subject to the contracts. These parameters are for reference only and it is not a part of the contracts. The specifications are subject to change without prior notice.