

EcoX UNIVERSAL

Simple Rail-Less Racking for Any Module

No. 1 Universal Rail-Less System

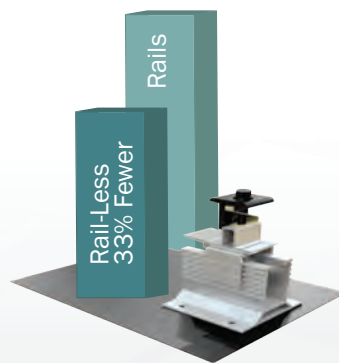
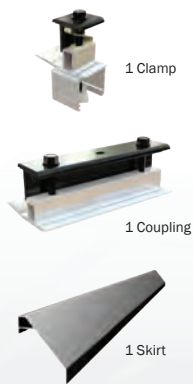
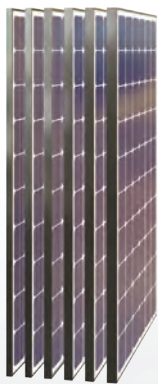


Skip the Rails.

Go from One Installation a Day to Two.

EcoX Universal delivers a faster, safer, and better installation process at a lower cost per watt. Project speed is accelerated with 33% fewer attachments and the elimination of rough inspections. Simple, one-size, preassembled core components fit every module thickness, enabling any module to be installed on every roof.

The Only One-Size-Fits-All Solution



Install Any Module with One Size for Each Core Component

Eliminate multiple SKUs with EcoX Universal's one-size-fits-all core components and install modules from 32 to 46mm without jobsite interruptions. End the headache of excessive inventory caused by solar mounting that requires different components for every module thickness.

Reduce Attachments by 33%

Get the cost-saving advantage of fewer parts and no rails. Spend less storing, transporting and installing. Use in landscape or portrait with no extra components.

Shorten Permitting Process with Extensive UL2703 Certifications

As panel supply fluctuates, responsive panel certification is increasingly important. As a certified testing partner lab of TÜV Rheinland Group, our list of UL 2703 certified panels is extensive and growing. Your inspection process will go smoothly and quickly.



EcolibriumSolar

Contact: 740.249.1877 | sales@ecolibrumsolar.com | www.ecolibrumsolar.com

The Power of EcoX Universal

6 Simple Parts. Unsurpassed Speed. Beautiful Results.

EcoX Universal includes Core Components that fit any module thickness – Base, Flashing, Coupling, Clamp and Skirt. Only the small, inexpensive Skirt Spacer is specific to module thickness. Design couldn't be easier. Simply design your array in EcoX Estimator and the number of components for your specific project are calculated for you.



Easily Secure to Any Roof

Universal Clamp

One size, preassembled. Secures panels to Base and provides integrated bonding with row-to-row bonding clips.

Base with Lag

Flashing

Composition shown. Attachments available for all roof types.

Join Panels without Cumbersome Rails

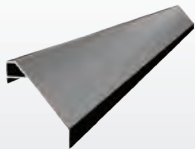
Coupling

One size, preassembled coupling joins panels, creating continuous structure and integrated bonding.

Skirt Spacer

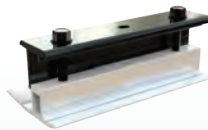
Used on the Skirt Row only, enables single-size Skirt to fit all modules by adjusting Clamp and Coupling height to match module thickness.

Get the Clean Finish Homeowners Want



Skirt

One size fits all. Covers downhill edge of array, creating clean look.



Hassle Free from Start to Finish

Need to change panels after ordering? No problem.

Keep your project on track and on budget with EcoX Universal. When you switch modules, all that's needed is a new set of Skirt Spacers to match your new module thickness. Small, lightweight, inexpensive part is the key to installation flexibility and the simplest storage and shipping available.

- Small, lightweight, inexpensive
- Simple to ship and store
- Few required, installed on Skirt Row Clamps and Couplings only
- EcoX Estimator adds to Bill of Materials



Skirt Spacers fit 32, 33, 35, 38, 40 & 46MM modules.



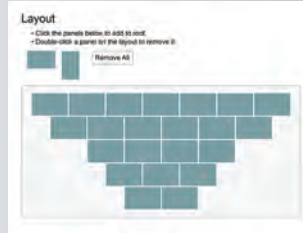
Design Your Array As Easy as 1, 2, 3

1. Layout Your Array & Get an Estimate in a Few Clicks with EcoX Estimator



Define Site Parameters

Enter project address and EcoX Estimator instantly evaluates site conditions and calculates design loads.



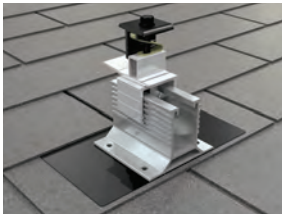
Design Your Array

Simply enter the array shape and PV panel, then click to add panels. Every array uses the same Universal Clamps, Couplings and Skirts.

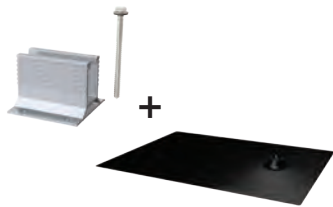
2. EcoX Estimator Selects Base & Attachment to Suit Your Roof Type

EcoX Universal provides attachments for common roof types and is compatible with most third-party attachments. Contact us for your specific roof type.

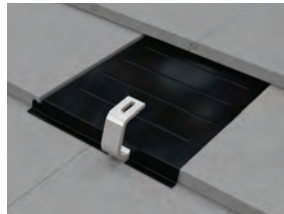
Composition



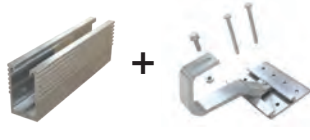
Use Comp Shingle Base and Flashing.



Tile



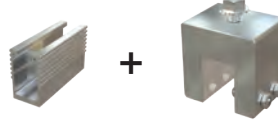
Use 9" Base and EcoX Tile Hook. Optional Flashing reduces grinding.



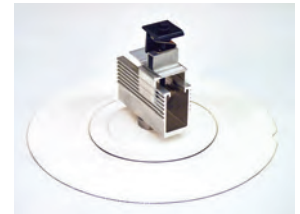
Metal



Use 5" Base and specific metal mount for your metal roof type.



Low Slope



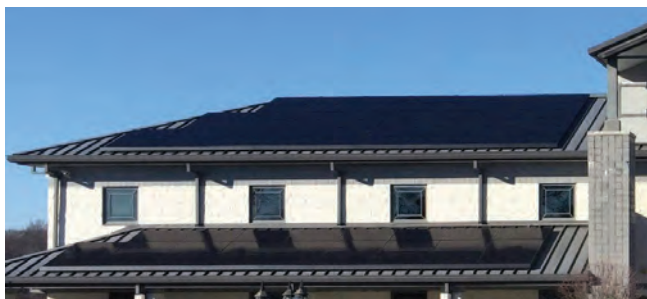
Use 5" Base and Flat Roof Mount or other low-slope attachments.



3. Get Bill of Materials & Permit Package

BOM includes Universal Clamp, Coupling and Skirt, Skirt Spacer, Attachment, and the optional components you select.

Part Number	Name	Recommended Quantity	Quantity
ES10333	PV Cable Clip	36	36
ES10139	Hook Cable Clip	36	36
ES10197	EcoX Flashing, Comp Shingle	24	24
ES10195	EcoX Base, Comp Shingle	24	24
ES10109	EcoX Clamp Assembly	24	24
ES10369	EcoX Coupling Assembly	12	12
ES10132	EcoX Power Accessory Bracket	12	12
ES10063	EcoX Connect Bracket, Large	12	12
ES10122	EcoX Landscape Skirt, 30x45cm	4	4
ES10260	EcoX Row-to-Row Bonding Clip	3	3
ES10144	EcoX Junction Box Bracket	1	1



Installer's System of Choice



Over 500MW Installed

- Install panels with one person using patented Clamp and Coupling Hold-Open
- Eliminate cumbersome rails and rough inspections
- Pass plan review and inspection first time with complete permitting package
- Overcome hurdles with comprehensive list of UL2703-certified panels
- Reduce storage and transport with compact parts and packaging
- Perform on-the-ground wire management easily and safely



Get Everything You Need To Save the Day

Options to Keep Your Job Running Smoothly

Get Best-of-Class Wire Management



Power Accessory Bracket
Easily attach micro-inverters and power optimizers to module frame.



PV Cable Clips
All clips aren't created equal. These easy-to-use clips hold 1-4 PV cables and quickly snap onto module frame or racking.

Master Any Roof with Installer-Centric Solutions

When you're on the roof, stuff happens. We've been there, so we offer purpose-built and best-in-class options for everything you need, whatever the roof throws at you.

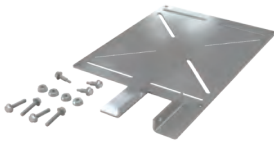


Deck Mount Hardware Kit
Attach EcoX Comp Shingle Base to roof decking. Perfect for TJI and flat rafters, odd framing, SIPS, lookouts, eaves, and to fix excessive cantilever.



North Row Extension
Properly flash and reach peak of roof. Extends clamp location as much as 10" from lag.

Get Power Off the Roof with Ease



Junction Box Bracket
Mount junction box to EcoX Universal Base with ease.



Base Conduit Mount
Supports conduit within an array. Mounts to EcoX Universal Base.

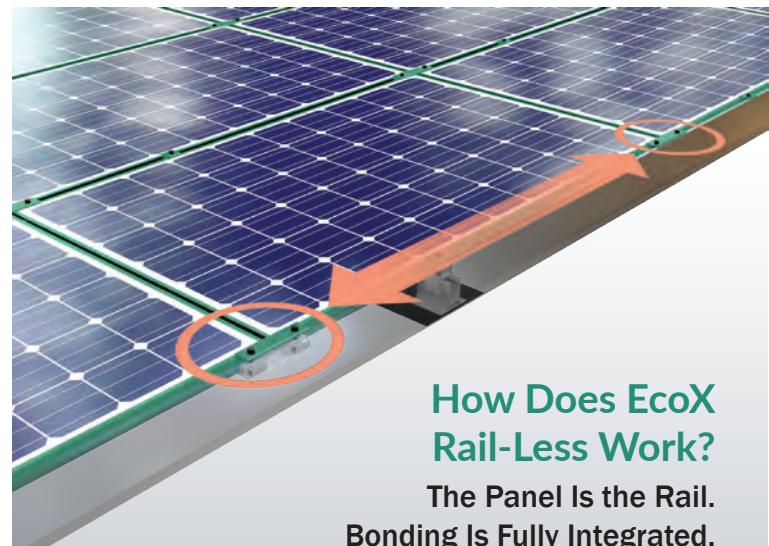


Flash Conduit Mount
Supports conduit outside of an array. Used with EcoX Universal Comp Shingle Flashing.

Don't Install Without It!

In the competitive business of solar energy, you need every advantage. That's why you should use EcoX Universal on every project. Call, email or log on to EcoX Estimator today.

Contact: 740.249.1877 | sales@ecolibriumsolar.com



How Does EcoX Rail-Less Work?

**The Panel Is the Rail.
Bonding Is Fully Integrated.**

EcoX Universal Clamps and Couplings join panels together, creating a continuous structure and integrated electrical bond. This structural continuity obsoletes rails, which are no longer needed to build a strong, bonded array. It's the beauty of simplicity at work for you.

Technical Specifications

Materials: Aluminum & Stainless Steel
Validation: UL2703 Certified for grounding/bonding, mechanical load, Fire Class Rating A Type 1 & 2, Flashing ICC-ES AC286/UL441 Rain Test
Warranty: 15 years

www.ecolibriumsolar.com