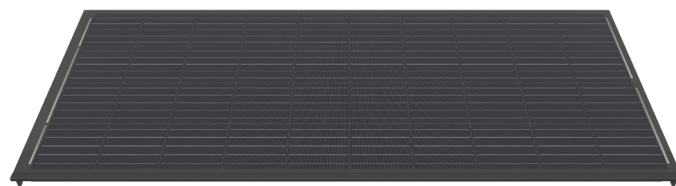


Border solar modules for M325-60-b GG NICER 3

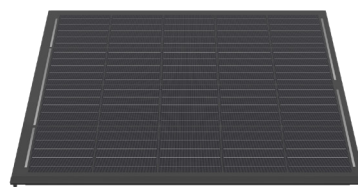
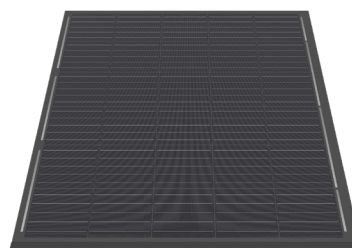
0322.1422 Swiss Premium M217-4x10-b GG NICER 3

| | |
|-----------------------------|----------------|
| Nominal power (Pmpp) | 217 Wp |
| Nominal voltage (Umpp) | 22.6 V |
| Nominal current (Impp) | 9.60 A |
| Open circuit voltage (Uoc) | 26.9 V |
| Short circuit current (Isc) | 10.61 A |
| Number of cells (matrix) | 40 (4x 10) |
| Dimensions (LxWxH) ±3.0 mm | 725x1671x60 mm |
| Modular dimensions (LxW) | 696x1676 mm |
| Weight | 25 kg |



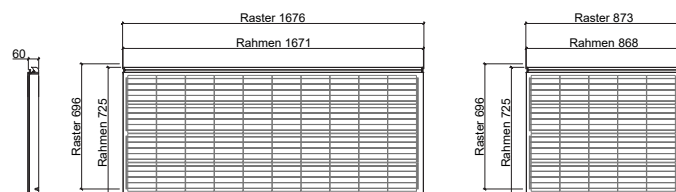
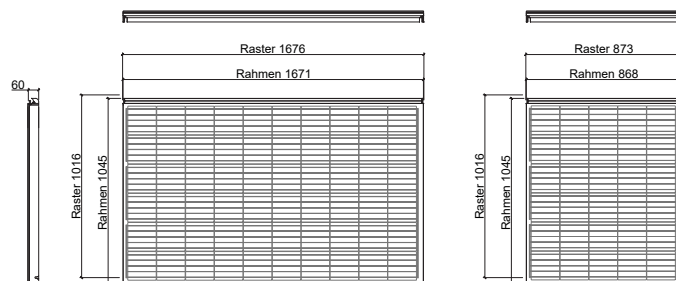
0322.1423 Swiss Premium M162-6x5-b GG NICER 3

| | |
|-----------------------------|----------------|
| Nominal power (Pmpp) | 162 Wp |
| Nominal voltage (Umpp) | 17.0 V |
| Nominal current (Impp) | 9.60 A |
| Open circuit voltage (Uoc) | 20.2 V |
| Short circuit current (Isc) | 10.61 A |
| Number of cells (matrix) | 30 (6x 5) |
| Dimensions (LxWxH) ±3.0 mm | 1045x868x60 mm |
| Modular dimensions (LxW) | 1016x873 mm |
| Weight | 20 kg |



0322.1424 Swiss Premium M108-4x5-b GG NICER 3

| | |
|-----------------------------|---------------|
| Nominal power (Pmpp) | 108 Wp |
| Nominal voltage (Umpp) | 11.3 V |
| Nominal current (Impp) | 9.60 A |
| Open circuit voltage (Uoc) | 13.4 V |
| Short circuit current (Isc) | 10.61 A |
| Number of cells (matrix) | 20 (4x 5) |
| Dimensions (LxWxH) ±3.0 mm | 725x868x60 mm |
| Modular dimensions (LxW) | 696x873 mm |
| Weight | 14 kg |



Customized special modules

| | |
|---|-----------------------------|
| 3338.0991 Special module NICER 2/3 Cat. 1 | active / complexity: low |
| 3338.0992 Special module NICER 2/3 Cat. 2 | active / complexity: medium |
| 3338.0993 Special module NICER 2/3 Cat. 3 | active / complexity: high |
| 3338.0994 Special module NICER 2/3 Cat. 4 | passive / complexity: high |

Border modules are electrically compatible with the corresponding basic module (60 solar cells). For technical reasons of production, despite utmost care, the surface properties and optical colour effect may vary from the basic module.

STC (Standard Test Conditions): irradiance 1000 W/m², cell temperature 25°C, AM 1.5
Measuring tolerances ±3 % (Pmpp); ±10 % (Umpp, Impp, Uoc, Isc)



Note: The instructions in the installation manual must be strictly complied with. Further information about approved utilization of products can be found in the installation manual or can be requested from the technical service.

E-mail: info@megasol.ch
Hotline: +41 62 919 90 90
www.megasol.ch



Megasol partner

Subject to errors and technical modifications.
© Megasol Energy Ltd | Version: 12/2019