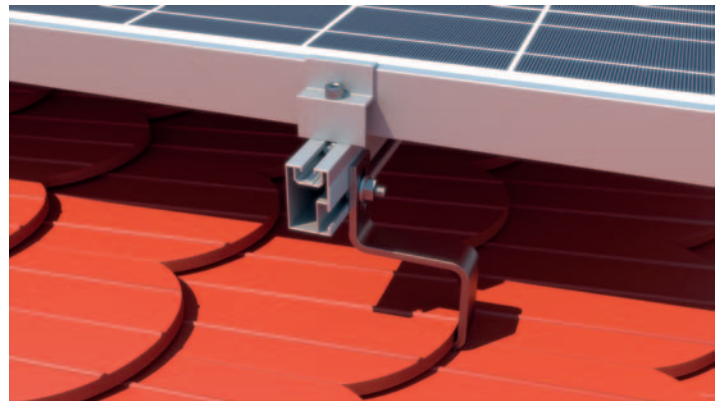
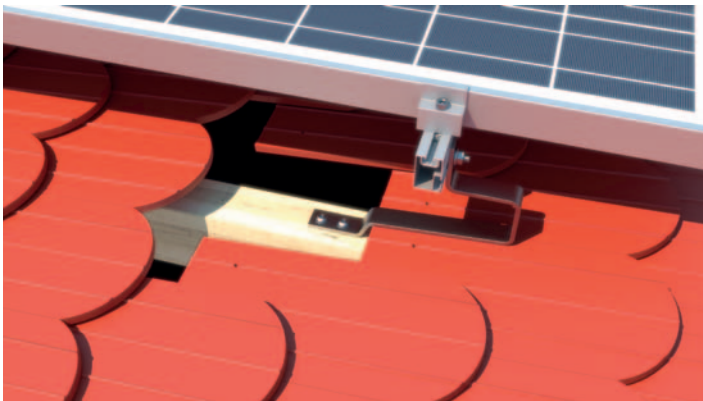
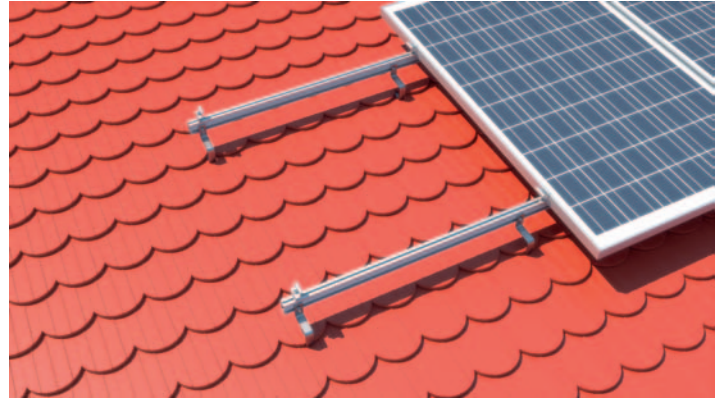


SYSTEM REM-08 VERTICAL

PLAIN TILE ROOF



Art. 0109

Mounting Rail
Measurements: 31x50
Length: 6200mm, 3100mm, 2070mm
Joining screws
top: M8
side: M8/M10/M12
Material: AL 6060T6



Art. 0143

Plain Tile Roof Hook
Plate 30x6, length: 265mm, long hole:
9x24mm
high: 183mm (42mm + 78mm + 63mm)
thickness: 6mm
use: Plain Tile
Material: A2 Stainless steel



Art. 0129

Hammerhead screws 28/15
Measurements:
M8 16÷70
M10 16÷100
Use: Mounting Rail Art. 0110
Material: A2 1.4301 stainless steel



Art. 0134

**Hexagon flange nuts with serration
DIN 6923**
M6
M8
M10
M12
Material: 1.4301 A2



Art. 0132

**Hexagon socket cap screws DIN 912
with serration**
M8 12÷60
Material: A2 1.4301 stainless steel



Art. 080

**T-slot nuts, self aligning with spring ball
M8**
Used with hexagon socket cap screw
Art. 0132
Use: for Mounting Rails Art. 0109, Art.
0110, Art. 062, Art. 0111, Art. 0112
Material: AL 6060T6



Art. 0147

Click
M8
Material: Aluminium
for rails: Art. 0109, Art. 0111



Art. 073

Middle Clamp
Length: 50mm (standard)
Length: 60mm – 100mm
Height: 30mm
Thickness: 3mm
Colors: plain aluminium/black
Material: AL 6060T6



Art. 075

End clamp
Length: 50 (standard)
Length: 70mm
Height: from 30mm to 50mm
Thickness: 3mm
Colors: plain aluminium/black
Material: AL 6060T6

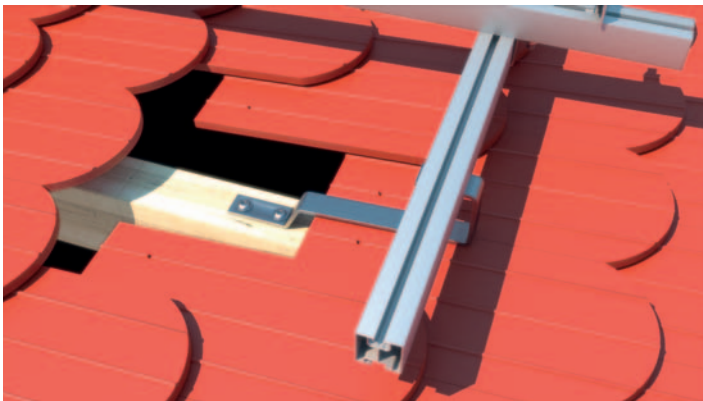
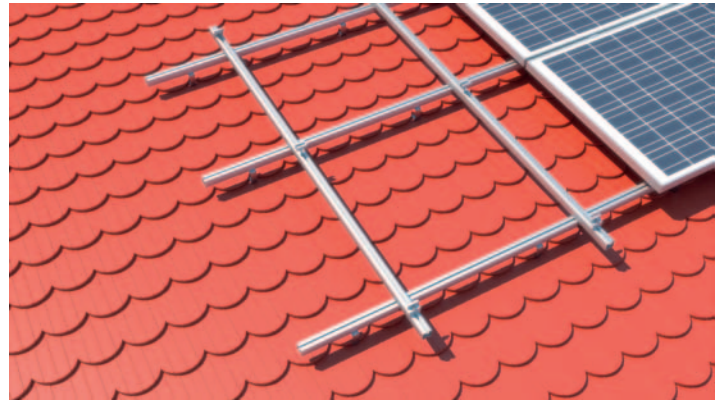


Art. 0127

Screw TCS with serration
M6 60 – 160
M8 60 – 400
Use: Roof Hook
Material: A2 1.4301 stainless steel

SYSTEM REM-08 HORIZONTAL

PLAIN TILE ROOF



Art. 0111
Mounting Rail 40 type I
Measurements: 40x40
Length: 6200mm, 3100mm, 2070mm
Joining screws: top M8, bottom M10
Material: AL6060T6

Art. 0118
Plain Tile Roof Hook
Plate: 30x5, High: 265mm, Long Hole
11x29
Thickness 5mm
Use: Plain Tile
Material: A2 1.4301 stainless steel

Art. 0129
Hammerhead screws 28/15
Measurements:
M8 16 +70
M10 16+100
Use: Mounting Rail Art. 0110
Material: A2 1.4301 stainless steel

Art. 0134
Hexagon flange nuts with serration
DIN 6923
M6
M8
M10
M12
Material: 1.4301 A2

Art. 0132
Hexagon socket cap screws DIN 912
with serration
M8 12+60
Material: A2 1.4301 stainless steel

Art. 080
T-slot nuts, self aligning with spring ball
M8
Used with hexagon socket cap screw
Art. 0132
Use: for Mounting Rails Art. 0109, Art.
0110, Art. 062, Art. 0111, Art. 0112
Material: AL 6060T6



Art. 0147
Click
M8
Material: Aluminium
for rails: Art. 0109, Art. 0111

Art. 073
Middle Clamp
Length: 50mm (standard)
Length: 60mm – 100mm
Height: 30mm
Thickness: 3mm
Colors: plain aluminium/black
Material: AL 6060T6

Art. 075
End clamp
Length: 50 (standard)
Length: 70mm
Height: from 30mm to 50mm
Thickness: 3mm
Colors: plain aluminium/black
Material: AL 6060T6

Art. 0127
Screw TCS with serration
M6 60+160
M8 60+400
Use: Roof Hook
Material: A2 1.4301 stainless steel

Art. 042
Cross Rail Connector
for mounting rails: Art. 0111, Art.062
(x1) M10
Use: Cross Mounting two Rails
Material: A2 1.4301 stainless steel