

Product Portfolio

Technical Properties



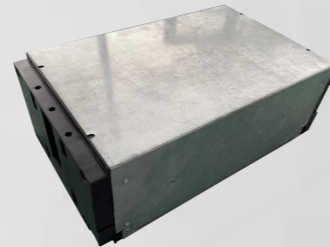
ZM4850



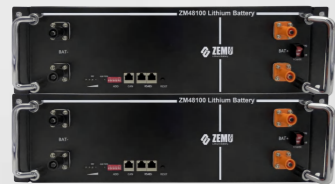
ZM48100



Batteries



Battery modules



Lithium battery pack



Lithium batteries



Key Features

- High precision cell sampling tolerance
- High energy efficiency
Energy efficiency(charge and discharge)>97%
- Automatic sleep
Intelligent sleep and wake up
- More Safety
Dual hardware & Triple software protection
- Multiple modes of communication
RS485 / CAN/wifi/bluetooth
- Long Life
Reliable LFP cells,Cycle life >6000 cycles
- High Reliability
Key devices(Relay,Fuse) approved by UL and IEC
- 3.5-inch touch screen
Friendly man-machine interface (optional)
- Smart Design & Easy installation
Plug in & off
- More Quiet
Without fan,more quiet and reduce the risk of fan failure

Model	ZM4850	ZM48100
Total Energy*	2500Wh	5000 Wh
Usable Energy(DCf)	2.25kWh	4.5k Wh
Nominal Dis-/Charge Power	1.5kW	3kW
Constant Current(Only Discharge)	50A	100A
Voltage	43.2~57.6Vd.C	43.2~57.6Vd.C
Nominal Voltage	51.2Vd.c	51.2Vd.C
Nominal Current	25A	40A
Max. Charge Witage	57.6Vd.c	57.6Vd.c
Weight	25kg	44kg
Dimension (mm)	515 · 442 · 88mm	500 · 442 · 155mm
Max.recommended DOD	90%	
Operating Condition	Indoor or outdoor	
OperaUng	From 0-45C	
Temperature	From-10*50 C	
Bluetooth distance	10m	
Humidity	4*100%(No condensed water)	
Pollution Degree	3	
Over Voltage Category	II	
Cooling Type	Na1u ral cooling	
Case Material	Metal ♦ Plastic	
Color	Black or Charcoal grey	
Installation	Free standing or Battery holder	
IP rating	IP 65	
Protective Class	I	
Max. Number of Parallel	16	
Warranty	10 years	
Life Span	>15 years	
Communicaion	CAN/ RS485	
Protection Mode	Hardware and software protection	
Battery Protection	Over-current/Over-voltage/Short circuit/ Under-voltageOver temperature	
Safety	CE	CE
	UN38.3	UN38.3
Hazardous Material Qasstfication	9	

Testing conditions based on temperature 25 at the beginning of life.
*Total Energy/Usable Energy measured under specific conditions from ZEMU 0.2C CC-CV

