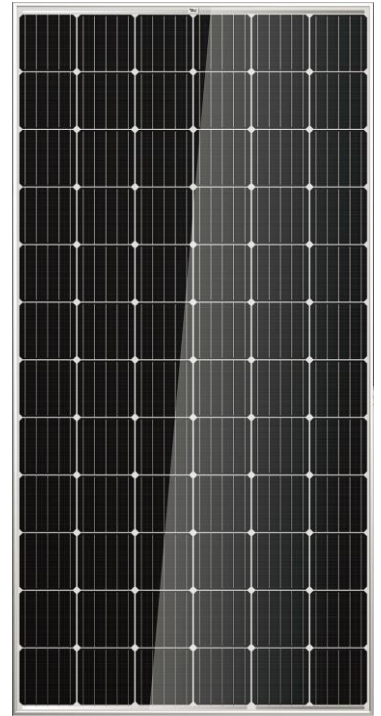


# COULEE SOLAR MODULE



**72 CELL**  
**MONOCRYSTALLINE MODULE**

**360-375W**  
**POWER OUTPUT RANGE**

**19.33%**  
**MAXIMUM EFFICIENCY**

**0 - +3%**  
**POSITIVE POWER TOLERANCE**

Coulee Limited, electrical specialists and creators of energy saving designs for domestic and commercial applications.

Coulee solar panel manufacturing processes utilize the best quality materials available and industry-leading equipment from around the world. We stand behind our promise of quality workmanship in all of our solar products. We are committed to building strategic, mutually beneficial collaboration with installers, developers, distributors and other partners.

## Product Certificates

IEC/EN 61215, IEC/EN 61730



**CAUTIONS:**  
**READ SAFETY AND INSTALLATION**  
**INSTRUCTIONS BEFORE USING THE PRODUCT.**

## Ideal For Large Scale Installations

- Reduce BOS cost by connecting more modules in a string
- Up to 1500VDC system voltage

## Maximum Limited Space

- Up to 193.3W/m<sup>2</sup> power density

## Highly Reliable Due to Stringent Quality Control

- Over 30 in-house tests (UV, TC, HF, etc.)
- In-house testing goes well beyond certification requirements
- Fire Class A tested
- 100% EL double inspection

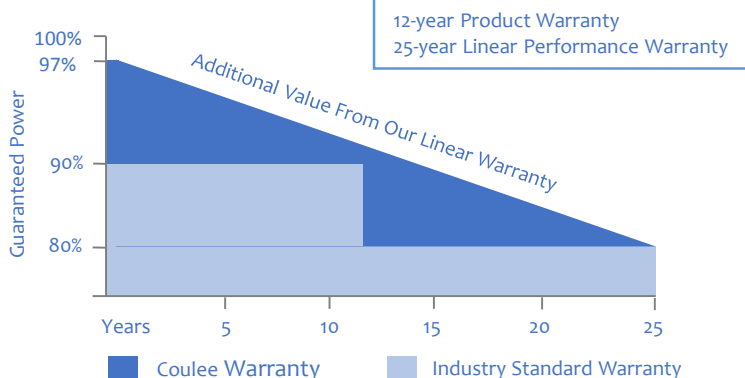
## Severe Weather Resilience

- 2400Pa wind load
- 5400Pa snow load
- 35mm hail stones at 97km/h

## Durability Against Extreme Environmental Conditions

- Salt mist corrosion tested, perfect for harsh climatic conditions

## Linear Performance Warranty



Coulee Limited  
<https://couleenergy.com>

**Construction Materials**

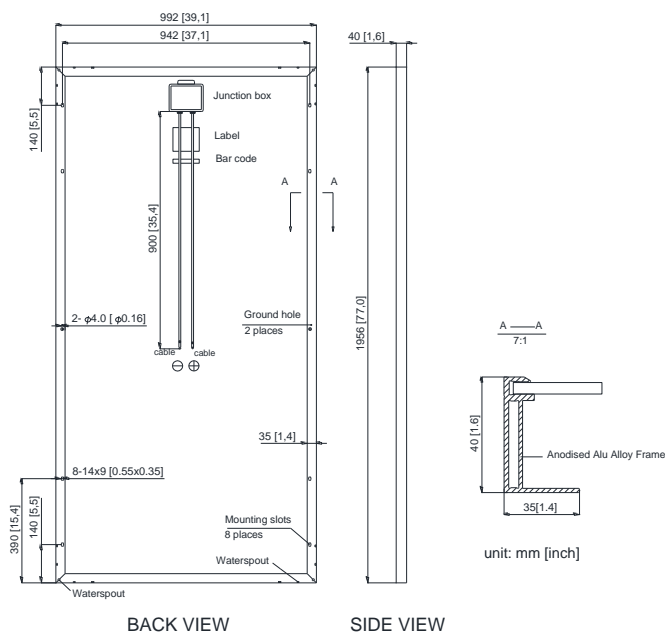
Front Glass	3.2mm, Low Iron, Tempered Glass
Frame	Anodized Aluminum Alloy
Junction Box	IP67 Rated (Black)
Output Cables	TUV 1 × 4mm <sup>2</sup> , Length: 900mm
Connector	MC4 (IP67)
Encapsulation Material	EVA
Backsheet	TPT (White OR Black)
Fixing Adhesive	Silicone Sealant

**Mechanical Data**

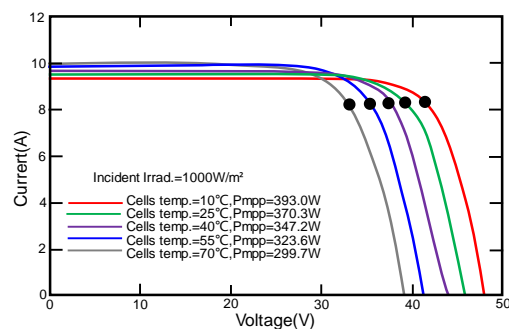
Solar Cells	Mono 156.75mm × 156.75mm
Number of Cells	72Cells (6 × 12)
Module Dimensions	1956mm × 992mm × 40mm
Weight	21kg

**Temperature Coefficient**

Power Tolerance	0 ~ +3%
Temperature Coefficient of Pmax	(-0.43 ± 0.05)%/°C
Temperature Coefficient of Voc	(-0.33 ± 0.02)%/°C
Temperature Coefficient of Isc	(0.058 ± 0.01)%/°C
NOTC	(45 ± 2) °C

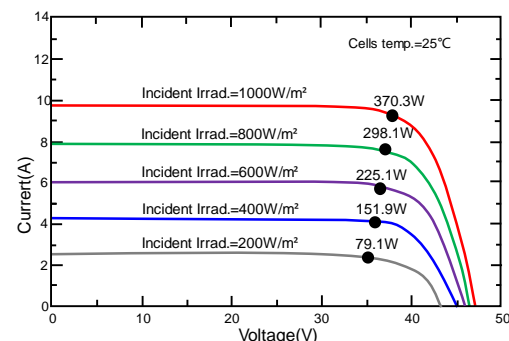
**Mechanical Diagrams**

**Operating Conditions**

Max. System Voltage	1500VDC (IEC)
Max. System Fuse Rating	15A
Operating Temperature	-40 ~ +85°C
Max. Static Load, Front (Snow)	5400Pa
Max. Static Load, Back (Wind)	2400Pa

**IV Curves**

**Electrical Parameters at STC**

Module type	CL370M6-72 Series			
Rated Maximum Power (Pmax/W)	360	365	370	375
Maximum Power Voltage (Vmp/V)	39.0	39.2	39.4	39.7
Open-circuit Voltage (Voc/V)	47.4	47.6	47.8	48.1
Maximum Power Current (Imp/A)	9.24	9.30	9.39	9.45
Short-circuit Current (Isc/A)	9.71	9.77	9.83	9.88
Module Efficiency (%)	18.55	18.81	19.07	19.33

STC: Irradiance 1000W/m, Cell Temperature 25°C, AM = 1.5


**Packaging Configuration**

Pieces Per Pallet: 56 | Pallets Per 40HQ: 12 | Pieces Per 40HQ: 672