

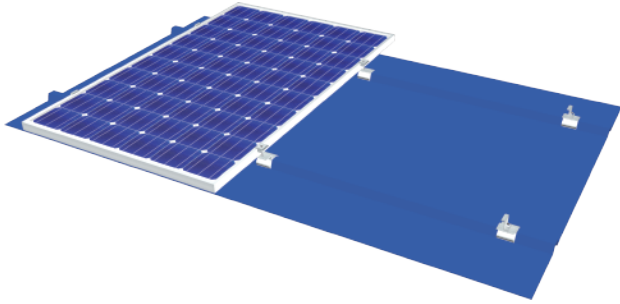


do My Best, to be the best!

MIBET ENERGY

MRac Trapezoidal Metal Roof Clamp Solar PV Mounting System (without rail)

Overview

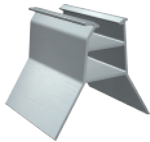
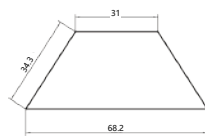


MRac Trapezoidal Metal Roof Support is mainly applied to Trapezoidal Metal Roof, and its material is Al6005-T5. With its professional design, it can realize the perfect connection between roof support and roof to meet customer installation requirement. Professional solution and structure design can save your installation time and cost. Moreover, Patented and unique design can bring you a good installation experience.



Component

Features



Trapezoidal Metal Roof Support

End Clamp Kit

Inter Clamp Kit

- Applicable for different metal roofs
According to customer requirement, choose different roof mounting system flexibly.
- Save installation time and cost
Save the installation time and cost by offering installation manual and solution
- Compatible to different types of solar modules
Free and flexible to choose different types of solar modules

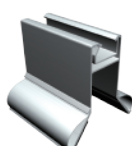
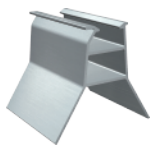
Technical Parameter

Installation Site	Pitched Roof	Design Standard	AS/NZS 1170, DIN 1055, JIS C8955: 2017,
Foundation	Trapezoidal Metal Roof Support		International Building Code IBC 2009,
Tilt Angle	0-15°		California Building Code CBC 2010;
Wind Load	60m/s	Material	Q235B(Hot-Dip Galvanized) Al6005-T5(Anodized)
Snow Load	1.6KN/m ²	Fastener	SUS304&Zinc-Nickel Alloy Electroplated Steel
Ground Clearance		Small Components	Al6005-T5(Anodized)
Applicable Solar Module	Framed or Frameless	Color	Silver or Customized
Panel Layout	Portrait or Landscape	Warranty	10-year warranty

Certified by TUV, SGS and qualified consultants in AU, JP, ASEAN, CN, UK, EU, US



Applicable Trapezoidal Roof Support



Trapezoidal Metal Roof Support H Trapezoidal Metal Roof Clamp Support 88

