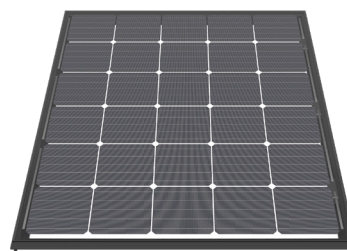


Border solar modules for M403-60-t BF GG NICER 2

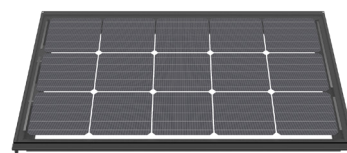
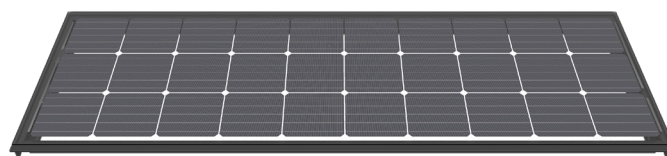
3338.0894 Swiss Premium M202-6x5-t BF GG NICER 2

Nominal power (Pmpp)	155 Wp	171 Wp	202 Wp
Nominal voltage (Umpp)	16.4 V	16.4 V	16.5 V
Nominal current (Impp)	9.47 A	10.40 A	12.25 A
Open circuit voltage (Uoc)	19.5 V	19.6 V	19.7 V
Short circuit current (Isc)	9.81 A	10.77 A	12.69 A
Number of cells (matrix)	30 (6x 5)	+10% BF ¹	+30% BF ¹
Dimensions (LxWxH) ±3.0 mm	1045x858x60 mm		
Modular dimensions (LxW)	1016x863 mm		
Weight	19.5 kg		



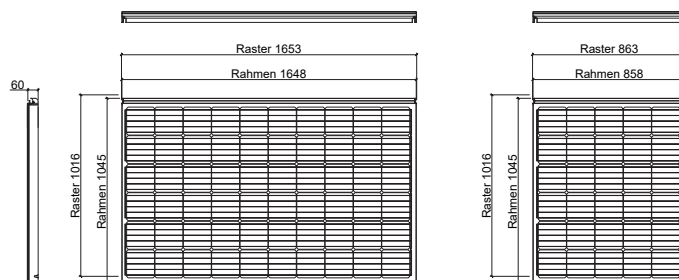
3338.0893 Swiss Premium M202-3x10-t BF GG NICER 2

Nominal power (Pmpp)	155 Wp	171 Wp	202 Wp
Nominal voltage (Umpp)	16.4 V	16.4 V	16.5 V
Nominal current (Impp)	9.47 A	10.40 A	12.25 A
Open circuit voltage (Uoc)	19.5 V	19.6 V	19.7 V
Short circuit current (Isc)	9.81 A	10.77 A	12.69 A
Number of cells (matrix)	30 (3x 10)	+10% BF ¹	+30% BF ¹
Dimensions (LxWxH) ±3.0 mm	577x1648x60 mm		
Modular dimensions (LxW)	548x1653 mm		
Weight	20.5 kg		



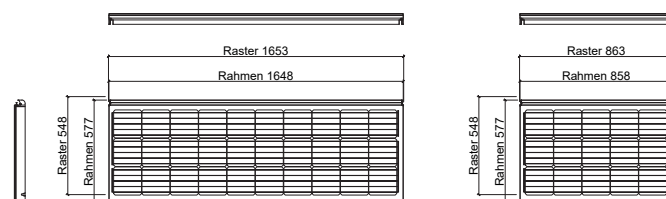
3338.0895 Swiss Premium M101-3x5-t BF GG NICER 2

Nominal power (Pmpp)	77 Wp	85 Wp	101 Wp
Nominal voltage (Umpp)	8.2 V	8.2 V	8.3 V
Nominal current (Impp)	9.47 A	10.40 A	12.25 A
Open circuit voltage (Uoc)	9.7 V	9.8 V	9.8 V
Short circuit current (Isc)	9.81 A	10.77 A	12.69 A
Number of cells (matrix)	15 (3x 5)	+10% BF ¹	+30% BF ¹
Dimensions (LxWxH) ±3.0 mm	577x858x60 mm		
Modular dimensions (LxW)	548x863 mm		
Weight	11.5 kg		



Customized special modules

3338.0991 Special module NICER Cat. 1	active / complexity: low
3338.0992 Special module NICER Cat. 2	active / complexity: medium
3338.0993 Special module NICER Cat. 3	active / complexity: high
3338.0994 Special module NICER Cat. 4	passive / complexity: high



E-mail: info@megasol.ch
 Hotline: +41 62 919 90 90
www.megasol.ch



Border modules are electrically compatible with the corresponding basic module (60 solar cells).
 For technical reasons of production, despite utmost care, the surface properties and optical colour effect may vary from the basic module.

STC (Standard Test Conditions): irradiance 1000 W/m², cell temperature 25°C, AM 1.5
 Measuring tolerances ±3 % (Pmpp); ±10 % (Umpp, Impp, Uoc, Isc)
¹With bifacial gain, depending on mounting distance and albedo of the substrate



Note: The instructions in the installation manual must be strictly complied with. Further information about approved utilization of products can be found in the installation manual or can be requested from the technical service.

Megasol partner

Subject to errors and technical modifications.
 © Megasol Energy Ltd | Version: 03/2019