



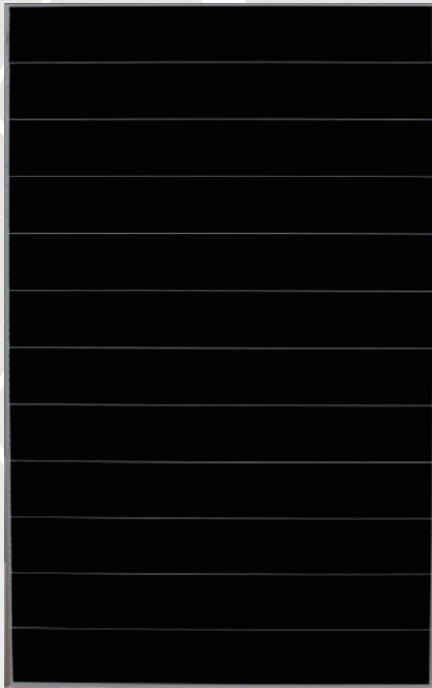
Product Warranty



Linear Output Warranty

# X-CHROS L Monocrystalline PERC High Efficiency SHINGLED

480 - 485 - 490 - 500 Wp



Shingled solar cells



Positive Tolerance



High Voltage 1500 Vdc



Low temperature adhesive  
High density setting



Lower occlusion loss



Safety and reliability



21.33 % max

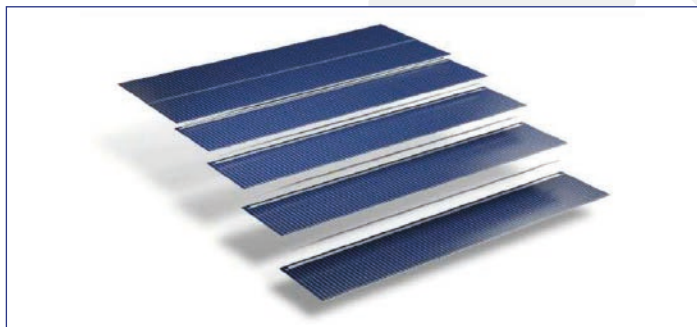


Fire reaction Class 1

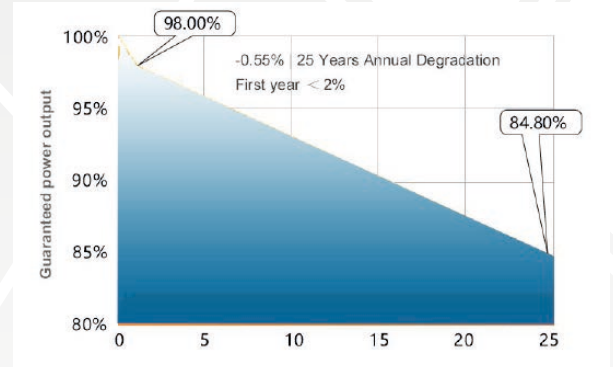


AR coating glass

The new photovoltaic modules X-CHROS L is one of a wide range of products made by Sunerg and It is manufactured according to IEC 61215, IEC 61730 standard and CE. PERC Shingled Technology provides ultra -high efficiency with better performance in low irradiation. Maximizes installation capacity in limited space



LINEAR WARRANTY



CORRESPOND TO

| UNI9177 | PV CYCLE | CE |

UNI EN ISO 9001:2008

| Quality management system

UNI EN ISO 14001:2004

| Standards for environmental management system

UNI EN BS OHSAS 18001:2007

| International standards for occupational health and safety

ELECTRICAL DATA (STC)		XMCH144480+H	XMCH144485+H	XMCH144490+H	XMCH144500+H
Open circuit Voltage	(Voc)	46.60 V	46.60 V	46.70 V	46.80 V
Voltage a Pmax.	(Vmp)	38.80 V	38.80 V	38.90 V	39.00 V
Short-circuit current	(Isc)	13.16 A	13.22 A	13.28 A	13.38 A
Current at Pmax.	(Imp)	12.37 A	12.50 A	12.60 A	12.82 A
Peak Power (Pmax) Tolerance		480 Wp	485 Wp	490 Wp	500 Wp ±2%
Module Efficiency		20.50%	20.70%	20.90%	21.33%
Maximum voltage		1500 V DC	1500 V DC	1500 V DC	1500 V DC
Maximum series fuse rating		20A	20A	20A	20A
Operating Temperature		-40°C - +85°C	-40°C - +85°C	-40°C - +85°C	-40°C - +85°C

Tolerance electric measurement ±3%

\* STC (Standard test conditions)

Irradiance 1000 w/m<sup>2</sup>, module temperature 25°C, AM= 1.5

### TEMPERATURE COEFFICIENT

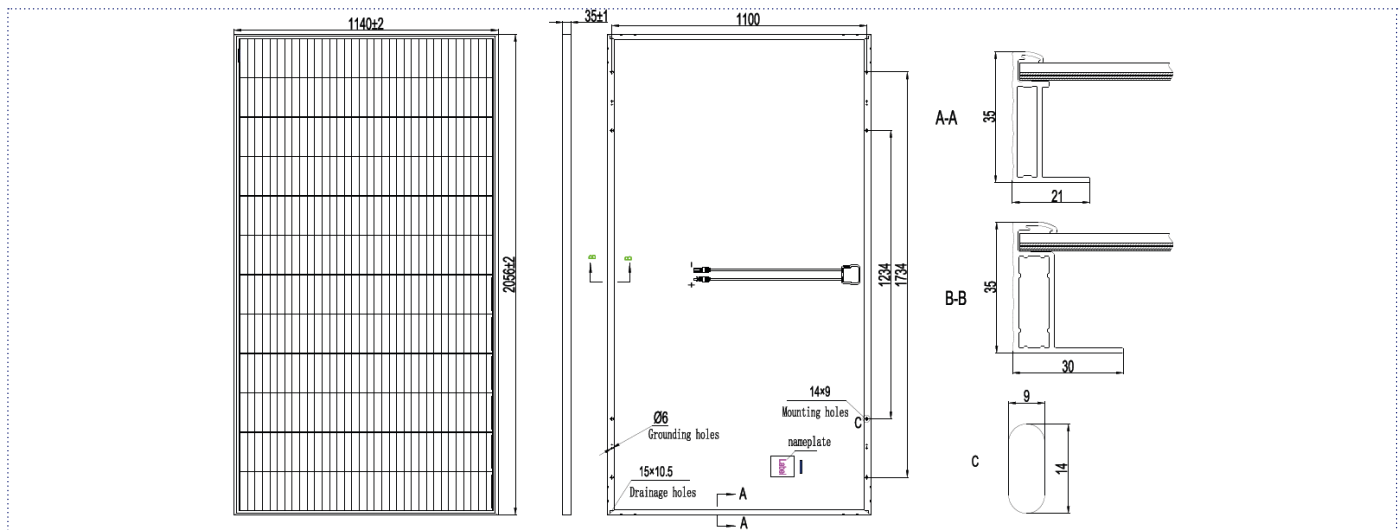
NMOT	42.3°C±2°C
Pmax Temperature Coefficient	-0.34%/ °C
Voc Temperature Coefficient	-0.27%/ °C
Isc Temperature Coefficient	0.04% / °C

### MECHANICAL CHARACTERISTIC

Max. surface load capacity (Pa)	5400
Dimensions (mm)	2056 x 1140 x 35
Weight (Kg)	25
Encapsulation	EVA
Cells	408 cells 166x166 PERC

### CONFIGURAZIONE DEL PAKAGING

Moduls a pallet	31
Moduls per Container	682



### GENERAL INFORMATION

Glass	AR coating tempered glass, 3.2mm
Farme	Anodized Aluminum alloy
Juntion Box	IP68, 2 Bypass diodes
Output Cable - connectors	4.0mm <sup>2</sup> , lenght 1200 mm - MC4 Compatible

Sunerg Solar S.r.l. reserves the right to make changes to the technical data of the product without prior notice.  
The technical details of the form, although included with the utmost care, may contain errors or inaccuracies not attributable to Sunerg Solar S.r.l.