



FLAT ROOF PV SYSTEM
FDGlight

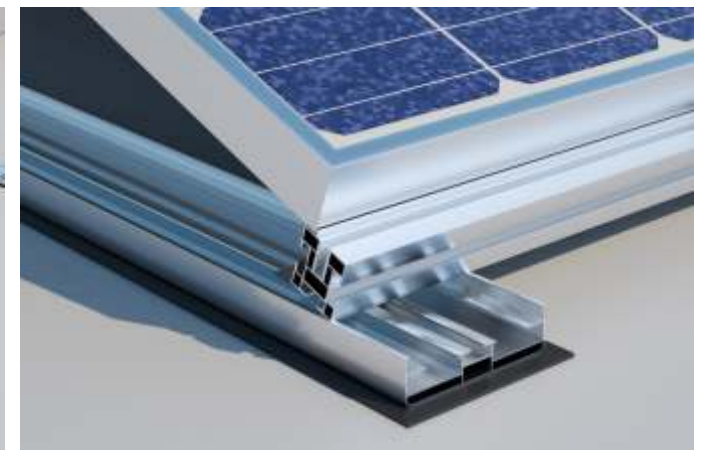
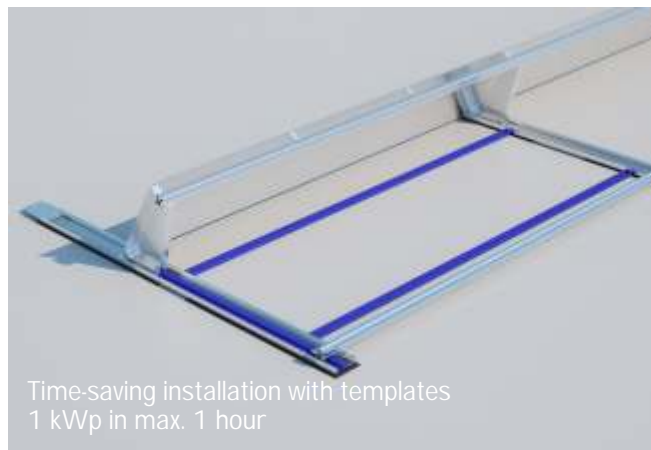


PATENT PENDING

RAPID INSTALLATION + SIMPLE MODULAR SYSTEM + LIGHT WEIGHT

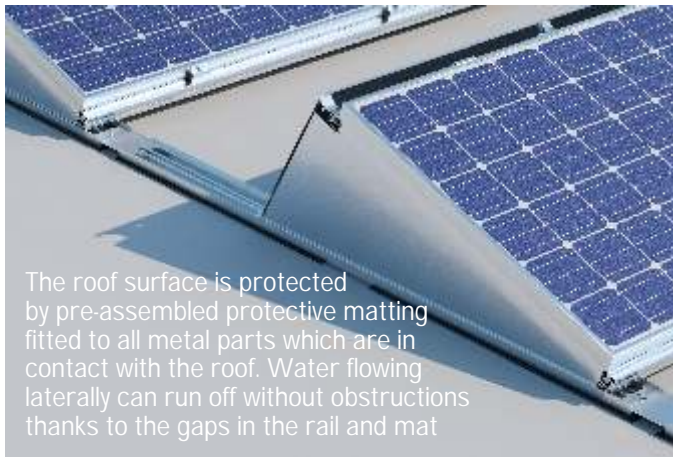
Time is money. We have optimised our flat roof PV system FDG: FDGLight saves you valuable time when assembling the system. Installation of the pre-assembled system components with the enclosed templates guarantees that it will take you no more than 1 hour to assemble 1 kWp!

- + Suitable for all framed solar modules
The design's variability makes it possible
- + Modules are clamped securely at the points defined by the module manufacturer
- + No roof penetration necessary
- + No point loads, just line loads
- + Great energy efficiency thanks to 20° pitch
Great area efficiency thanks to 12° pitch
- + Low to no ballast requirements
Project-specific automatic structural analysis for all European locations



AERODYNAMIC DESIGN + FUNCTIONAL DETAILS

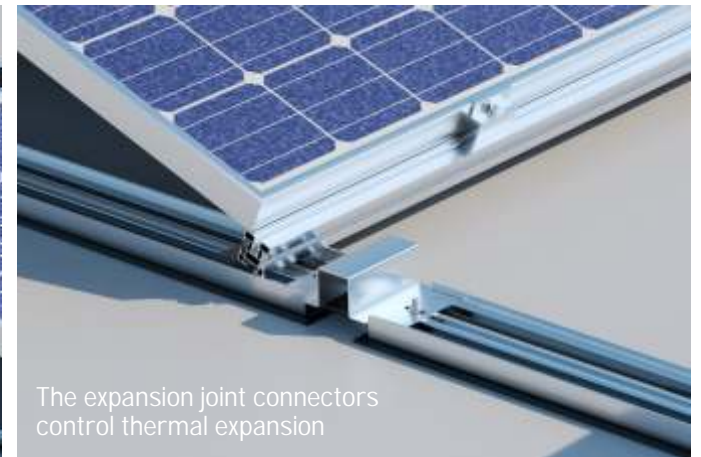
FDGLight uses the power of the wind: The stronger the wind, the firmer the contact with the roof. System installation never requires roof penetration. The pre-assembled system components mean no drilling, cutting or sawing on the roof.



The roof surface is protected by pre-assembled protective matting fitted to all metal parts which are in contact with the roof. Water flowing laterally can run off without obstructions thanks to the gaps in the rail and mat



Base profile rails act as cable tracks for integrated cable routing



The expansion joint connectors control thermal expansion



Cables are routed in the system via cable clamps

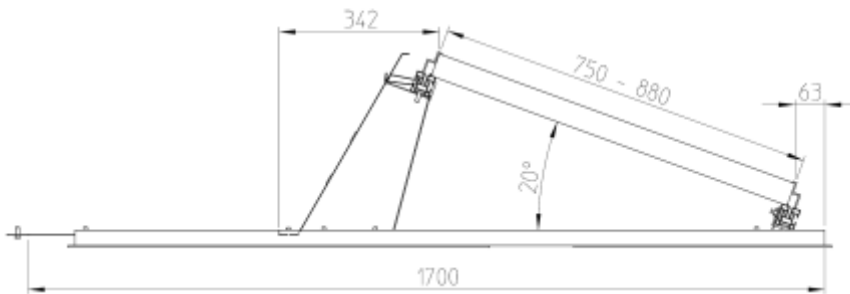


Easy attachment of rear panels



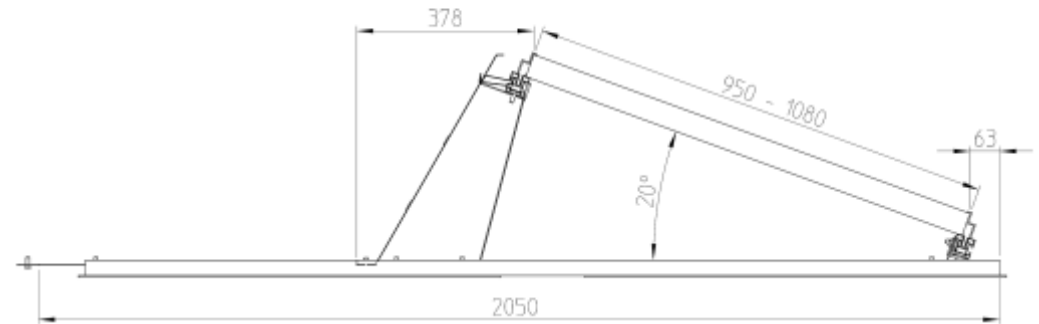
If ballast is required at the edges, paving slabs are laid in the base rail. No additional ballast bags are required

FDGLight 1/20°



ROW WIDTH 1,700 mm
Compatible MODULE WIDTH 750 mm - 880 mm
Compatible MODULE LENGTH any length
PITCH 20 degrees

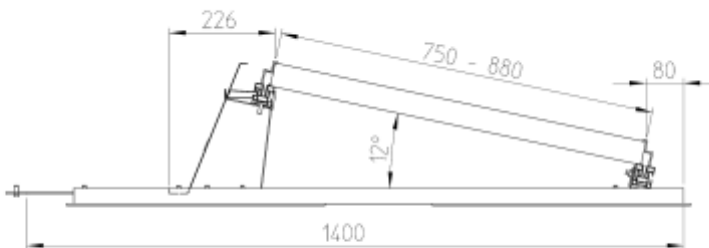
FDGLight 2/20°



ROW WIDTH 2,050 mm
Compatible MODULE WIDTH 950 mm - 1,080 mm
Compatible MODULE LENGTH any length
PITCH 20 degrees

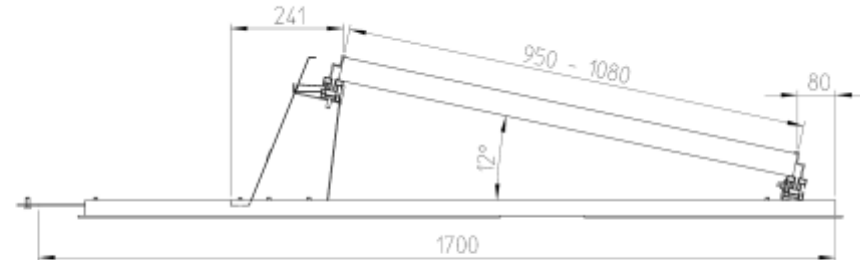
FOR GREATER AREA EFFICIENCY ON YOUR ROOF: FDG WITH A PITCH OF 12°

FDGLight 1/12°



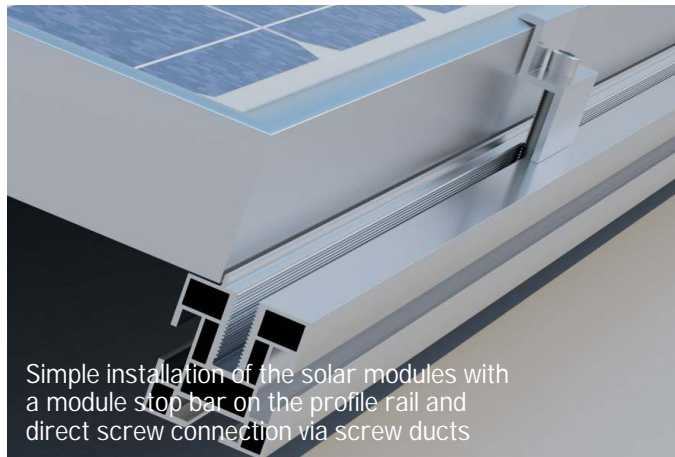
ROW WIDTH 1,400 mm
Compatible MODULE WIDTH 750 mm - 880 mm
Compatible MODULE LENGTH any length
PITCH 12 degrees

FDGLight 2/12°



ROW WIDTH 1,700 mm
Compatible MODULE WIDTH 950 mm - 1,080 mm
Compatible MODULE LENGTH any length
PITCH 12 degrees

PRECISE DOWN TO THE SMALLEST DETAIL



EFFICIENT ROOF COVERAGE EVEN FOR DIFFICULT GEOMETRIES

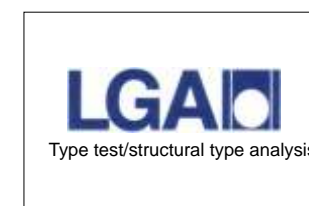
- + High system interconnectability allows complex coverage
- + Modules can be built around obstacles
- + Each roof can be covered individually - southern orientation is taken into account, layout plan and installation instructions for every project
- + Suitable for use anywhere in Europe
per Eurocode EN 1991-1-4 for wind loads
EN 1991-1-3 for snow loads



DATA + FACTS + SAFETY

+ MATERIAL	aluminium and stainless steel, polyurethane (PU) protective matting materials with maximum corrosion resistance
+ AREA OF APPLICATION	flat roofs with pitches up to 5° on foil, gravel, bitumen etc.
+ INSTALLATION	pre-assembled system-components and templates allow installation of 1 kWp in max 1 hour
+ SURFACE LOAD	average own weight (substructure + module) 9.5 kg/m ²
+ PITCH	20°/12° other pitches or row spacing available upon request
+ NO ROOF PENETRATION	
+ STRUCTURAL ANALYSIS	for every project anywhere in Europe
+ LGA Type test/structural type analysis verified by Testing Authority for Structural Safety	wind loads per DIN 1055-4 snow loads per DIN 1055-3
+ QUALITY MANAGEMENT	per DIN ISO 9001:2008
+ DEPLOYABLE EUROPE-WIDE	per Eurocode EN 1991-1-4 wind loads EN 1991-1-3 snow loads

PATENT PENDING



Subject to technical modifications without notice