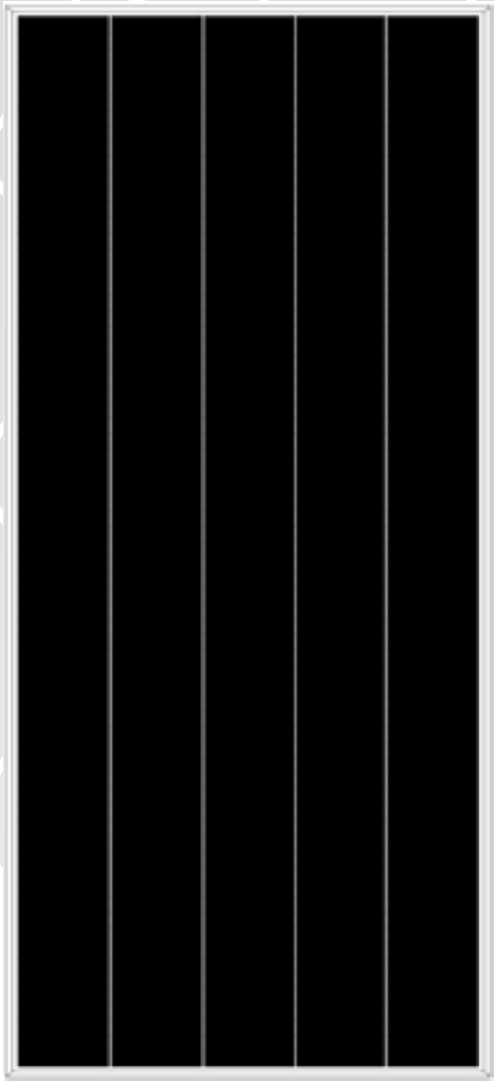




# X-CHROS Monocrystalline PERC High Efficiency SHINGLED

530 - 535 - 540 - 545 - 550 - 555 Wp



*Shingled solar cells*



*Positive Tolerance*



*High Voltage 1500 DC*



*Anti-PID and low LID*



*21.5 % max efficiency*

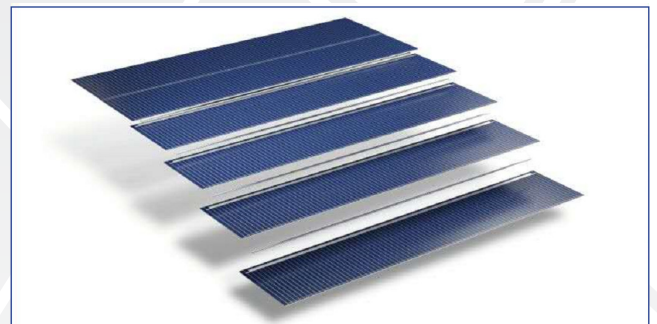


*Product Warranty*



*Linear Warranty*

The new photovoltaic modules X-CHROS is one of a wide range of products made by Sunerg and It is manufactured according to IEC 61215, IEC 61730 standard and CE. PERC Shingled Technology provides ultra -high efficiency with better performance in low irradiation. Maximizes installation capacity in limited space.



**CORRESPOND TO**

PV CYCLE | CE |

UNI EN ISO 9001:2008	Quality management system
UNI EN ISO 14001:2004	Standards for environmental management system
UNI EN BS OHSAS 18001:2007	International standards for occupational health and safety

**ELECTRICAL DATA (STC)**

		XMCH114530Q+H	XMCH114535Q+H	XMCH114540Q+H	XMCH114545Q+H	XMCH114550Q+H	XMCH114555Q+H
Open circuit Voltage	(Voc)	46.00 V	46.10 V	46.20 V	46.30 V	46.40 V	46.50 V
Voltage a Pmax.	(Vmp)	38.20 V	38.30 V	38.30 V	38.40 V	38.50 V	38.60 V
Short-circuit current	(Isc)	14.77 A	14.87 A	14.98 A	15.09 A	15.19 A	15.30 A
Current at Pmax.	(Imp)	13.88 A	13.98 A	14.08 A	14.18 A	14.28 A	14.38 A
Peak Power (Pmax) Tolerance 0 ~ +5W		530 Wp	535 Wp	540 Wp	545 Wp	550 Wp	555 Wp
Module Efficiency		20.6 %	20.8 %	21.0 %	21.2 %	21.4 %	21.6 %
Maximum voltage		1500 DC	1500 DC	1500 DC	1500 DC	1500 DC	1500 DC
Maximum series fuse rating		25A	25A	25A	25A	25A	25A
Operating Temperature		-40°C - +85°C	-40°C - +85°C	-40°C - +85°C	-40°C - +85°C	-40°C - +85°C	-40°C - +85°C

\*STC (Standard test conditions)

Irradiance 1000 w/m<sup>2</sup>, module temperature 25°C, AM= 1.5

**TEMPERATURE COEFFICIENT**

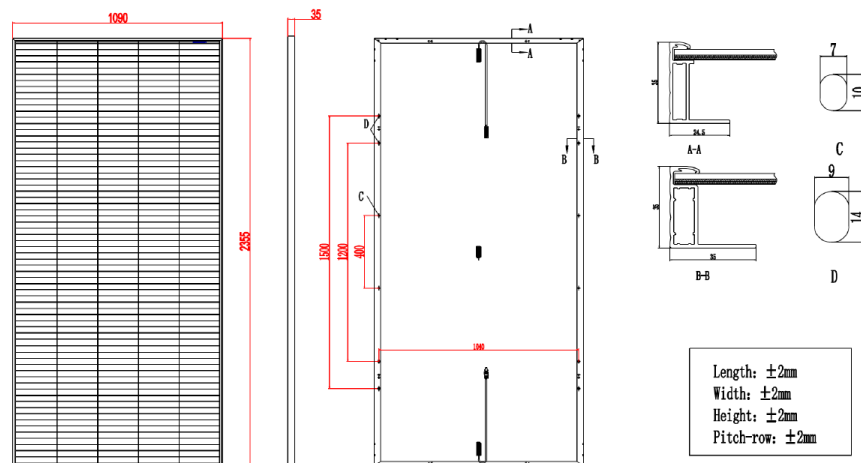
NMOT	42.3°C±2°C
Pmax Temperature Coefficient	-0.34%/ °C
Voc Temperature Coefficient	-0.27%/ °C
Isc Temperature Coefficient	0.04% / °C

**MECHANICAL CHARACTERISTIC**

Max. surface load capacity (Pa)	5400
Dimensions (mm)	2355X1090X35 mm
Weight (Kg)	28
Encapsulation	EVA
Cells	210x210 mm PERC
Backsheet	High weatherability backsheet

**PAKAGING CONFIGURATION**

Modules per pallet	31		
Pallets per container 40'GP	16	Modules per Container	496


**GENERAL INFORMATION**

Glass	AR coating tempered glass, 3.2mm
Farme	Anodized Aluminum alloy
Juntion Box	IP68, three diodes
Output Cable - connectors	4mm <sup>2</sup> , lenght 800 mm (vertical) +250mm/-150mm (horizontal), MC4 Compatible

Sunerg Solar S.r.l. reserves the right to make changes to the technical data of the product without prior notice. The technical details of the form, although included with the utmost care, may contain errors or inaccuracies not attributable to Sunerg Solar S.r.l.