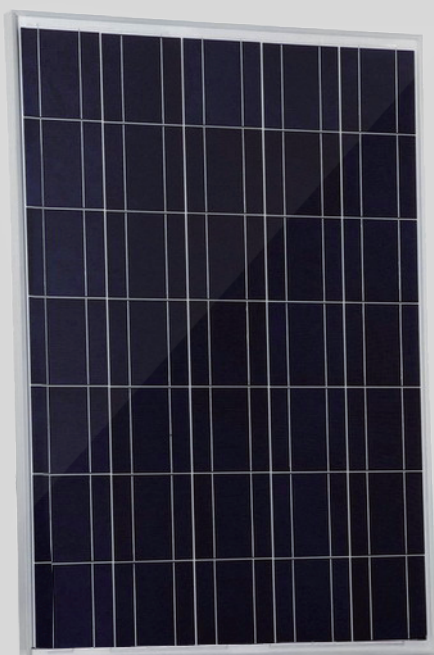


# SOLAR LEADING

To a better future

## SL6P36-100W-120W

Polycrystalline Photovoltaic Module



**13.15-15.78%**  
MAXIMUM EFFICIENCY

**100-120W**  
POWER OUTPUT RANGE

**36 CELL**  
POLYCRYSTALLINE MODULE

**0~+5W**  
POSITIVE OUTPUT GUARANTEE



**Excellent low light performance on cloudy days, mornings and evenings**

- Anti-reflective coating



**Great aesthetics for residential applications**

- High efficiency, lower weight, Easy handling and optimum utilization of roof space



**Certified to withstand challenging environmental conditions**

- 2400 Pa wind load
- 5400 Pa snow load
- 35mm hail stone at 97 km/hr



**IP68 connectors enhance the reliability of the PV system**



**Blowing sand resistance certification**



**Anti-PID**



**Fire test certification**



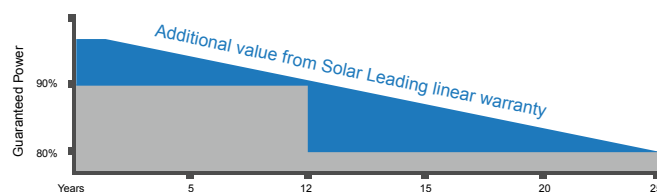
**Ammonia corrosion certification**



**Salt mist corrosion certification**

**LINEAR PERFORMANCE WARRANTY**

12 Year Product Warranty 25 Year Linear Power Warranty



Industry standard

Solar Leading

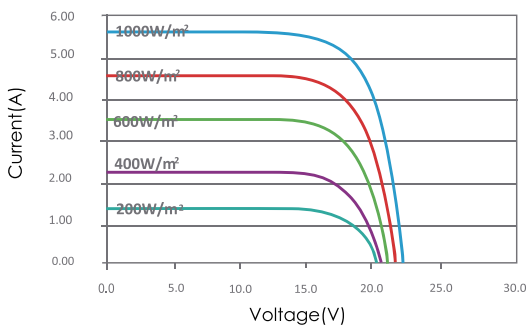
## Electrical Characteristics

Characteristics	Unit	SL6P36-100W	SL6P36-110W	SL6P36-120W
Maximum Power (Pmax)	W	100	110	120
Power Tolerance	W	(0, +5)	(0, +5)	(0, +5)
Maximum Power Voltage (Vmp)	V	18.0	18.0	18.0
Maximum Power Current (Imp)	A	5.00	5.56	6.67
Open Circuit Voltage (Voc)	V	22.46	21.60	21.60
Short Circuit Current (Isc)	A	5.38	6.01	7.34
Module Efficiency (ηm)	%	13.15	14.47	15.78
Dimension of module	mm	1120×680×35mm (44.0×26.7×1.4inch)		
Pmax Temperature Coefficient	%/C	-0.48		
Voc Temperature Coefficient	%/C	-0.35		
Isc Temperature Coefficient	%/C	+0.04		
Maximum System Voltage	VDC	1000(TUV);600(UL)		
Maximum Series Fuse Rating	A	15		
Operating Temperature	℃	-40 ~ +85		
<b>NOCT</b>	℃	45±2		

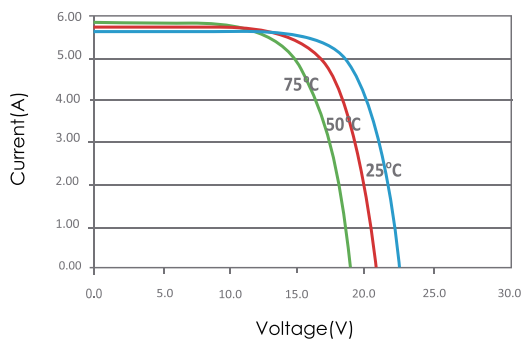
STC:1000W/m2. AM1.5 and 25 °C cell temperature: NOCT : Nominal Operating Cell Temperature

## I-V Curves

I-V Curves of PV Module SL6P36-100W (Cell Temp. 25 °C)

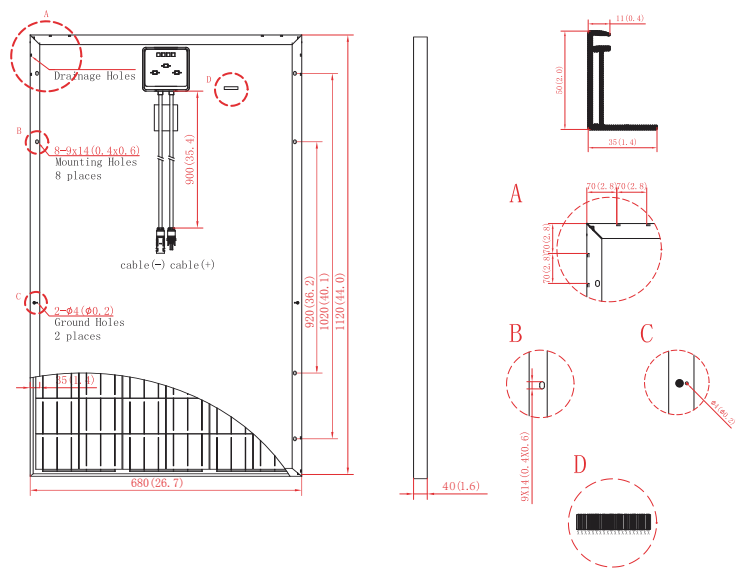


I-V Curves of PV Module SL6P36-100W at Different Cell Temp. (AM1.5, 1000W/m²)



## Physical Characteristics

Unit:mm(inch)



Cell Type	156 mm x 156 mm, Polycrystalline Silicon
No. of Cells	36pcs (6 x 6)
Dimension	1120x680x35mm (44.0x26.7x1.4inch)
Weight	8.0kg (17.6lbs.)
Cable Length	900mm (35.4inch)
Bypass Diodes	6/6pcs
Junction Box	IP65/IP68
Front Glass	3.2mm (0.1inch) tempered low-iron glass
Frame	Anodized aluminum alloy

\* Specifications are subjected to change without further notice

