

Solar Panel, Solar Modules, Solar Photovoltaic Modules, PV Modules

- PVSK-430**
- PVSK-435**
- PVSK-445**
- PVSK-450**
- PVSK-455**

MONO HALF -CELL 10BB

Explain Model No	Model	Half-Cell	Solar Cell Type	Wattage	Silicon Type
	PVSK-450	120PCS	182 × 182 mm	450W	M:Monocrystalline

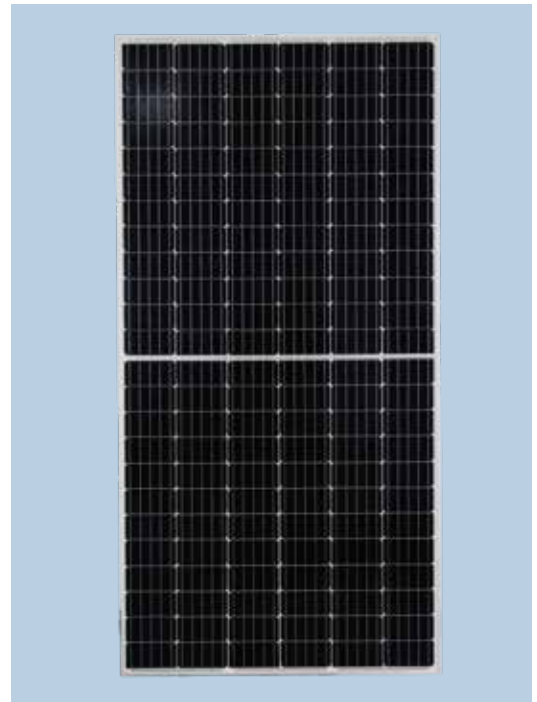
Remark: PVSK-450 is most common model.

Features

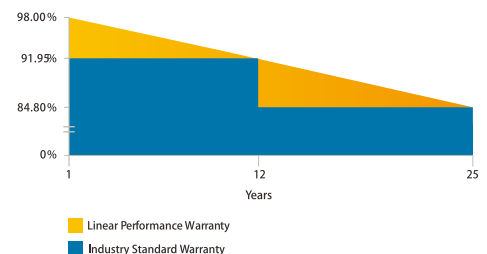
- **High module conversion efficiency**
 Module efficiency up to 21.02%
- **Half-cell Design**
 Less energy loss caused by shading due to new cell string layout and lower cell connection power loss due to half-cell design.
- **Excellent weak light performance**
 More power output in weak light condition such as cloudy, morning and sunset
- **Higher Durability against harsh environment**
 Reliable quality leads to a better sustainability even in harsh environment
- **Lower operating temperature**
 Lower operating temperature and temperature coefficient increases the power output
- **Anti- PID (Potential induced degradation)**
 Excellent Anti-PID performance
- **Lower LCOE**
 2% more power generation, lower LCOE



Warning: Read the Installation and User Manual in its entirety before handling, installing, and operation smart Solar modules.



25 Years Linear Warranty



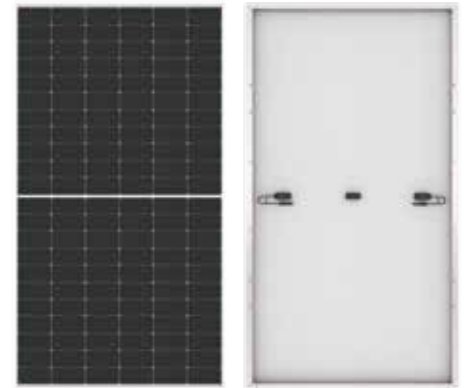
25 Years Linear Power Output
10 Years Materials and Workmanship

Note: This publication summarizes product warranty and Specifications which are subject to change without notice

ELECTRICAL PERFORMANCE

Electrical Parameters at Standard Test Conditions (STC)					
Module Type	PVSK-435W	PVSK-440W	PVSK-445W	PVSK-450W	PVSK-455W
Power Output (Pmax / W)	435W	440W	445W	450W	455W
Power Output Tolerances	±3%	±3%	±3%	±3%	±3%
Module Efficiency (ηm)	20.09%	20.33%	20.56%	20.79%	21.02%
Voltage at Pmax (Vmp / V)	34.09V	34.28V	34.48V	34.67V	34.87V
Current at Pmax (Imp / A)	12.77A	12.84A	12.91A	12.98A	13.05A
Open-circuit Voltage (Voc / V)	40.8V	40.95V	41.1V	41.25V	41.04V
Short-circuit Current (Isc / A)	13.67A	13.74A	13.82A	13.89A	13.97A

STC:1000W/m² irradiance, 25°C module temperature, AM1.5g Spectrum according to EN 60904-3.



Electrical parameters at NMOT (Irradiance 800 W/m ² , ambient temperature 20 °C, AM=1.5, wind speed 1 m)					
Module Type	PVSK-435W	PVSK-440W	PVSK-445W	PVSK-450W	PVSK-455W
Power Output (Pmax / W)	324	328	332	336	339
Voltage at Pmax (Vmp / V)	32.1V	32.1V	32.2V	32.4V	32.6V
Current at Pmax (Imp / A)	10.01A	10.23A	10.3A	10.36A	10.42A
Open-circuit Voltage (Voc / V)	38.5V	38.6V	38.7V	38.9V	39.1V
Short-circuit Current (Isc / A)	10.97A	11.04A	11.11A	11.17A	11.24A

Thermal Characteristics			
Normal operating cell temperature	NMOT	°C	45±2
Temperature coefficient of Pmax	γ	%/°C	43
Temperature coefficient of Voc	βvoc	%/°C	-0.27
Temperature coefficient of Isc	αisc	%/°C	0.05
Temperature coefficient of Vmpp	βvmpp	%/°C	-0.42

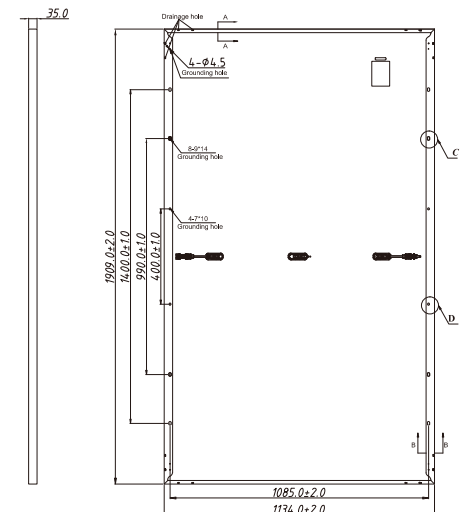
Operating Conditions	
Max.system voltage	1500Vdc
Max.series fuse rating	20A
Operating temperature range	-40°C to 85°C
Max.static load,front(e.g.,snow)	5400Pa
Max.static load,back(e.g.,wind)	2400Pa
Max.hailstone impact(diameter)	25mm/23m/s

Construction Materials	
Front cover(material/thickness)	low-iron tempered glass/3.2mm
Cell(QTY)	132PCS Mono Perc (182MM)
Frame(Materials)	anodized aluminum alloy/silver/clear
Junction box(protection degree)	≥IP68
Cable (length/cross-sectional area)	300mm/4mm ²

General Characteristics	
Products Dimension(L/W/H)	1909*1134*35mm
Weight	24KGS
QTY of per pallet	31pcs per pallet
Packaging box dimensions	2295*1095*1145MM
No. of pallets for 40HQ containers	24 Pallets (744PCS, GW.: 785KGS)

Note: This publication summarizes product warranty and Specifications which are subject to change without notice.

Unit: mm



I-V Curves

