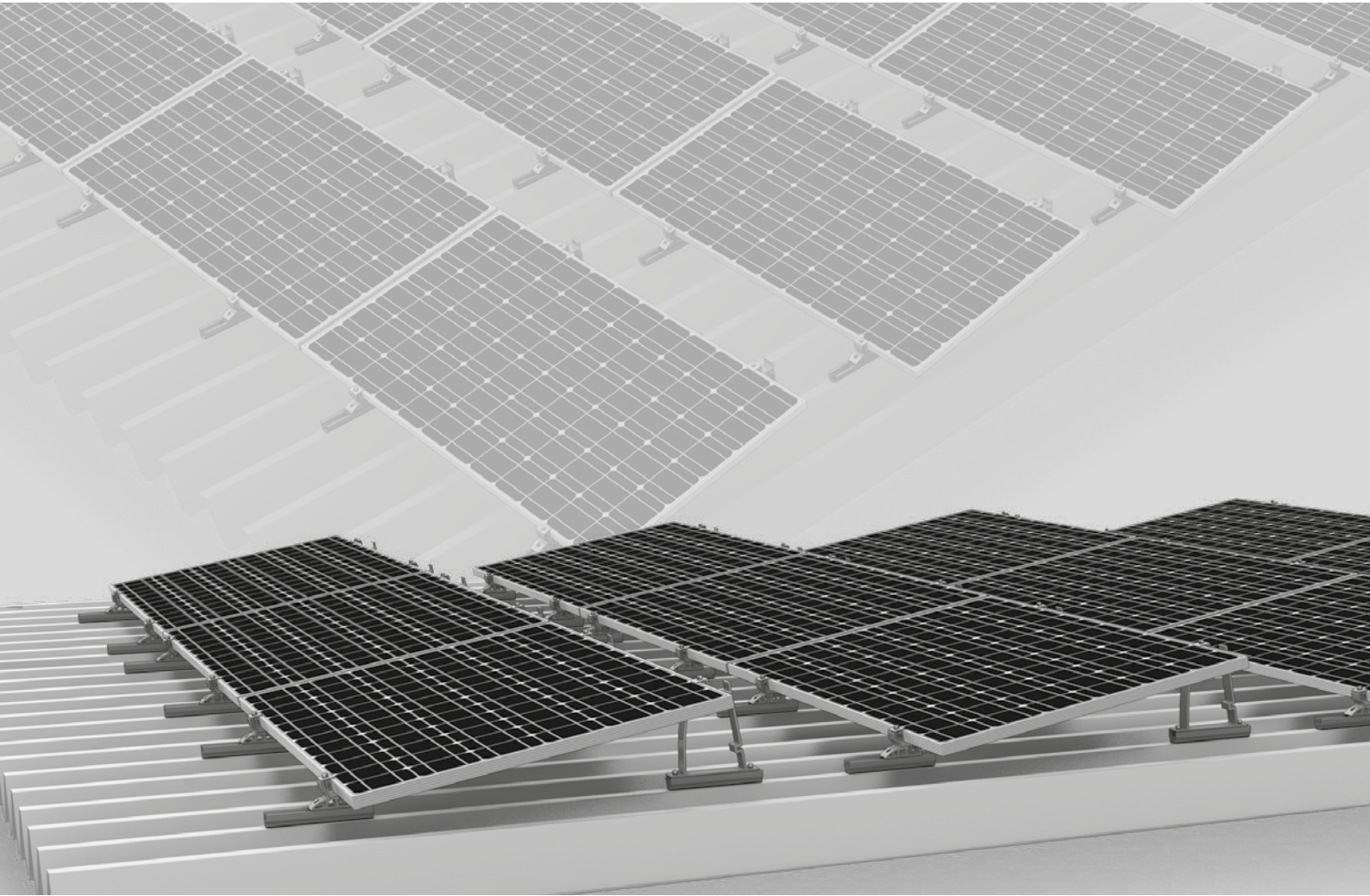




S-Dome Small System



- / For a roof inclination of up to 15° on trapezoidal sheet metal
- / Economical in terms of materials and transportation; clever connections and strong holding power
- / The perfect combination of the all-round MultiRail component and load-optimised, slim 10° elevations

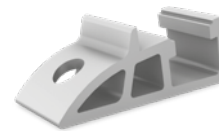


Components



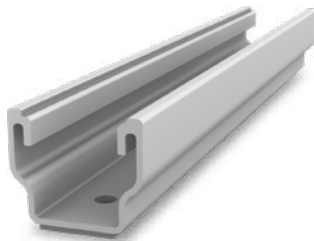
Dome S1000 Small

Narrow elevation module support element



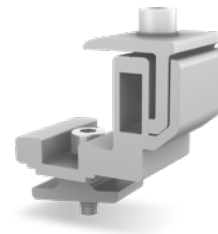
Dome SD Small

Narrow module support element



MultiRail 25

- / Length 250 mm
- / With four boreholes for roofs with up to 15° inclination



FlexClamp Small

- / For clamping on the long side of module
- / Height adjustable

Technical data

	S-Dome Small
Scope of application	Flat or pitched roofs $\leq 15^\circ$ with trapezoidal sheet metal roofing
Fastening type / roof fixture	Attached with drilling screws in trapezoidal sheets, parallel to raised crests
Requirements	<ul style="list-style-type: none"> • Sheet thickness: ≥ 0.4 mm steel or ≥ 0.5 mm aluminium • Tensile strength for aluminium: 165 N/mm² • Tensile strength for steel: acc. to approval min. S235 in acc. with DIN EN 10025-1 • Crest width: min. 22 mm • Crest spacing: independent of crest distance
Inclination angle	10°
Material	<ul style="list-style-type: none"> • Mounting rails, Dome SD Small, Dome S1000 Small, FlexClamp Small: Aluminium [EN AW-6063 T66/ EN AW-6082 T6]; EPDM • Small parts: Stainless steel [1.4301] A2

