

EverExceed[®]
power your applications



Heavy duty

ESC SERIES

pure sine wave inverter

Heavy Duty ESC series

pure sine wave inverter

ESC series pure sine wave inverter is a multifunctional converting technology. It adopts the most advanced PWM control technology, and it has a lot of characteristics such as: precise control, security, efficiency, good reliability. This type inverter can supply electricity power to families, marketplace and so on. It's have the function of perfect intellectualized protection. The inverter researched and developed by ourselves with many highly technologies and intellectualized electrical components, which could debates the fussy control and protection made by apart components and improve the reliability of inverters as well as make the operation more convenient.



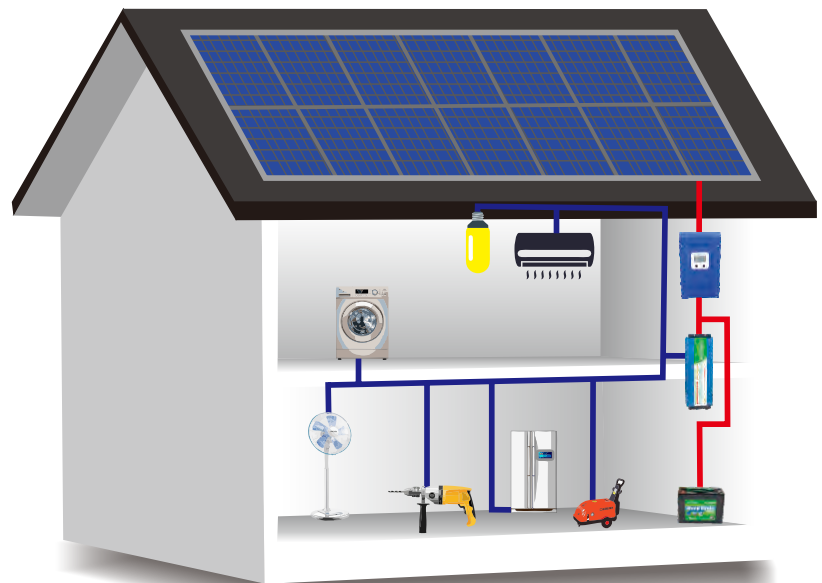
Features

- Over voltage shutdown
- Over load protect/Low voltage alarm and shutdown
- Short-circuit protect
- Over heat protect
- Advanced heat sink design and optimum component layout
- Standard AC outlet
- LED red/green indicator

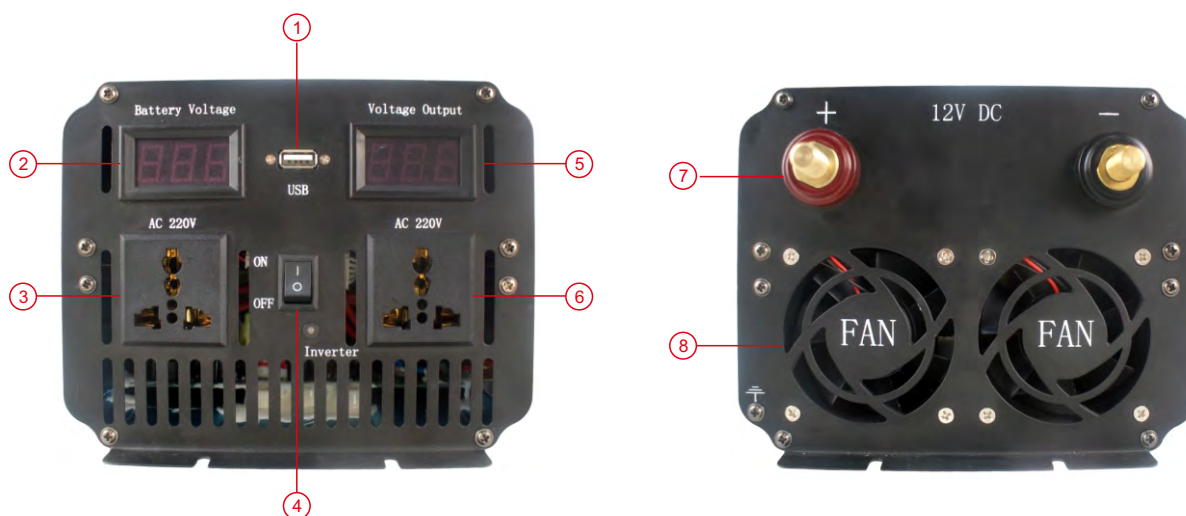


Our ESC inverters are able to carry:

- Air conditioning
- Washing machine
- Cleaning machine
- Electric drill
- Refrigerator
- Electric drill
- Incandescent
- Led lights
- Fluorescent lamps
- Fans



Detail show(ESC2000)



① USB Port 5V/1A

② Battery Voltage Display

③ AC Output Port

④ AC Output Switch

⑤ OutPut VoltageDisplay

⑥ AC Output Port

⑦ DC Input Terminal

⑧ Intelligent Fan



Internal part

High-end chip and high quality MOS tubes;

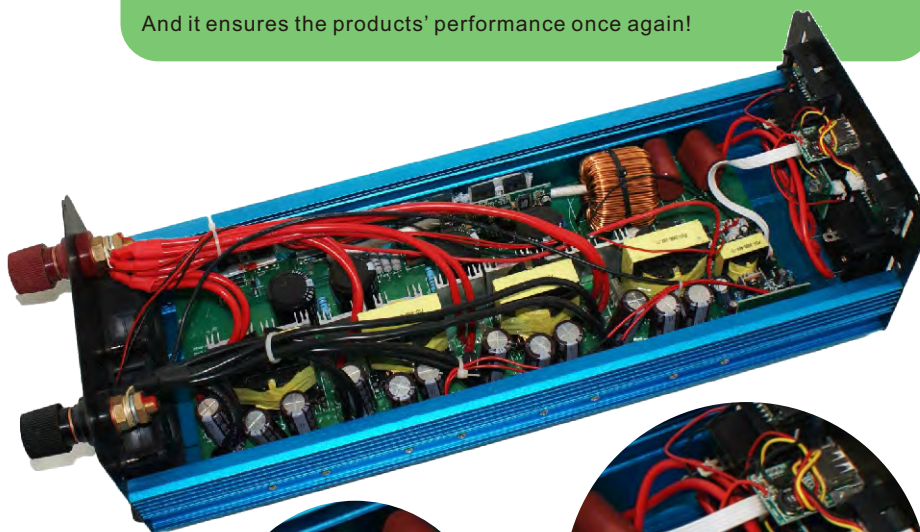
Combine multi-protect functions;

low voltage protection, over voltage protection, overload protection, over temperature protection, short circuit protection, which provides more stable performance and longer service life.

Product has been improved more scientifically based on the traditional craft.

Aluminum shell has improved its sturdiness and heat dissipation so as to extend its service life.

And it ensures the products' performance once again!



Connection Diagram(ESC2000)

12VDC Inverter Connection



24VDC Inverter Connection



Note: 48VDC Inverter are connected in similar ways.

MODEL	ESC150	ESC300	ESC500	ESC600	ESC800	ESC1000	ESC1500	ESC2000	ESC3000	ESC5000	
Rated Power	150W	300W	500W	600W	800W	1000W	1500W	2000W	3000W	5000W	
Peak (surge) Power	300W	600W	1000W	1200W	1600W	2000W	3000W	4000W	6000W	10000W	
DC INPUT											
DC Input Voltage(optional)	12/24V	12/24/48V							24/48V		
Voltage Range	10~15V(12V)/ 20~30V(24V)/ 40~60V(48V)										
Input Over voltage shutdown	15.5±0.5V(12V) / 30±1V(24V) / 60±2V(48V)										
Input Under Voltage alarm	10.5±0.5V(12V) / 20±1V(24V) / 42±2V(48V)										
Input Under Voltage shutdown	9.5±0.5V(12V) / 19±1V(24V) / 40±2V(48V)										
No load current (A)	≤0.6/0.3	≤0.8/0.6/0.3					≤1.8/1.0/0.5	≤3.0/1.5/0.8	≤3.8/2.0/1.2	≤2.5/1.4	
AC OUTPUT											
Output Voltage	110/220VAC±5%										
Output Frequency	50/60±0.5Hz										
Output waveform	Pure sine wave										
SYSTEM											
Max Efficiency	≥90%										
Cooling Fan	Yes (with intelligent fan)										
Connection	DC input terminal/AC output socket										
Over temperature alarm & shutdown	75℃										
Temperature	0~ 45℃(operation)/0~ 60℃(storage)										
Dimension (W*D*H) (mm)	160*95*55	172*150*58	260*150*78	262*150*76	309*180*172	367*150*76	452*150*142	454*180*142	529*180*142	585*180*167	
Net Weight (KG)	0.53	0.91	1.70	3.05	3.05	2.75	4.00	4.90	6.02	8.00	
Gross weight (KG)	0.73	1.14	2.20	3.80	3.80	3.32	4.77	5.87	7.41	10.00	

NOTES: Other power rating can customize by customer requirement

Protect function



Low Voltage Protection

Function: Automatically protect when be in low voltage: first alarm, then the voltage continuously reduce. LED red on. and the machine shuts down.

Short Circuit Protection

Function: Automatically self protect when short circuit: LED red on.

Over Temperature Protection

Function: It can automatically self protect when at high temperature: LED red on. the machine auto shuts down.

Over load Protection

Function: Automatically self protect when load too much power: LED red on. the machine auto shuts down.

Reverse Polarity Protection

Features: Automatically protect when positive and negative cables are reverse connected: fuse burns automatically shuts down.

Over Voltage Protection

Function: Automatically protect when be in high voltage: LED red on, the machine automatically shuts down.



***Supplied Worldwide by
EverExceed Corporation***

