



Multi-Crystalline Solar Module



Power Warranty

90% up to 10 years
80% up to 25 years



Quality Reliability Test

Pass the salt spray corrosion test, level 6

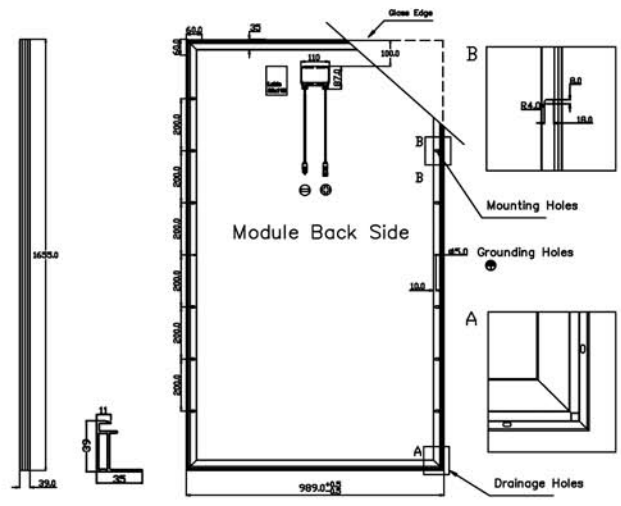


PID Resist Cell

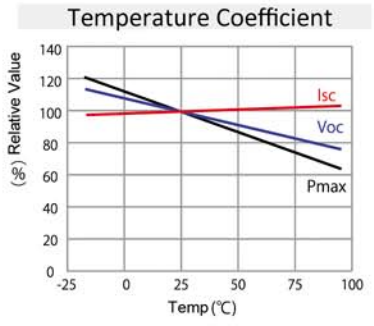
- 1) CHEMITOX (Japan Testing laboratory)
Chemitox 1000V/85°C/85RH/96Hrs
- 2) ITRI (Taiwan Testing Laboratory)
PI-Berlin 1000V/85°C/85RH/48Hrs
UL 1000V/25°C/100RH/168Hrs
TUV/IEC 1000V/60°C/85RH/96Hrs



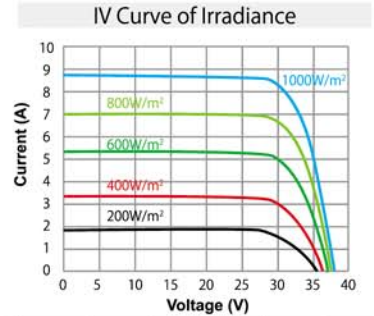
Quality production from Superior Team Work



| Multi-Crystalline 72pcs 6x12 Series | | | | | |
|-------------------------------------|-------------|------------------------|------------|----------------------|------------|
| Model Number | TKSG-31501 | TKSG-31001 | TKSG-30501 | TKSG-30001 | TKSG-29501 |
| Max Power Rating (W) | 315 | 310 | 305 | 300 | 295 |
| Max Power Voltage (V) | 36.71 | 36.52 | 36.31 | 36.11 | 35.89 |
| Max Power Current (A) | 8.59 | 8.49 | 8.40 | 8.31 | 8.22 |
| Open Circuit Voltage (V) | 45.74 | 45.47 | 45.19 | 44.91 | 44.64 |
| Short Circuit Voltage (A) | 8.89 | 8.83 | 8.78 | 8.72 | 8.67 |
| Module Efficiency (%) | 16.14% | 15.89% | 15.63% | 15.37% | 15.12% |
| Nominal Ope. cell Temp | 45±2°C | Temp Coeff. of Pmax | | -0.53% /° K | |
| Temp Coeff. of Voc | -0.39% /° K | Dimensions (L x W x C) | | 1973×989×39mm | |
| Temp Coeff. of Isc | 0.07% /° K | Weight | | 22.25kgs / 49.06 lbs | |

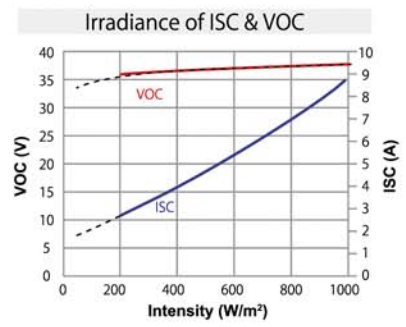


| Multi-Crystalline 60pcs 6x10 Series | | | | | |
|-------------------------------------|-------------|------------------------|------------|---------------------|------------|
| Model Number | TKSA-26001 | TKSA-25501 | TKSA-25001 | TKSA-24501 | TKSA-24001 |
| Max Power Rating (W) | 260 | 255 | 250 | 245 | 240 |
| Max Power Voltage (V) | 31.38 | 31.03 | 30.72 | 30.37 | 30.04 |
| Max Power Current (A) | 8.29 | 8.22 | 8.14 | 8.07 | 7.99 |
| Open Circuit Voltage (V) | 38.02 | 37.77 | 37.52 | 37.27 | 37.02 |
| Short Circuit Voltage (A) | 8.72 | 8.67 | 8.63 | 8.58 | 8.54 |
| Module Efficiency (%) | 15.88% | 15.58% | 15.27% | 14.97% | 14.66% |
| Nominal Ope. cell Temp | 45 ±2°C | Temp Coeff. of Pmax | | -0.44% /° K | |
| Temp Coeff. of Voc | -0.32% /° K | Dimensions (L x W x C) | | 1655×989×39mm | |
| Temp Coeff. of Isc | 0.04% /° K | Weight | | 19.5kgs / 43.33 lbs | |



| Intensity | V _{pm} | I _{pm} | P _{max} | V _{oc} | I _{sc} |
|-----------|-----------------|-----------------|------------------|-----------------|-----------------|
| 200 | 0.86 | 0.216 | 0.185 | 0.943 | 0.308 |
| 400 | 0.947 | 0.385 | 0.384 | 0.964 | 0.459 |
| 600 | 0.987 | 0.614 | 0.614 | 0.981 | 0.614 |
| 800 | 0.998 | 0.803 | 0.802 | 0.991 | 0.796 |
| 1000 | 1 | 1 | 1 | 1 | 1 |

| | |
|-------------------------------------|----------------|
| Output Tolerance | 0~3% |
| Module Operate Temp Range | -40°C ~+ 85°C |
| Max system Voltage | 1000/600VDC |
| Max Mechanical Load | 5400 pa |
| Salty Spray Corrosion Autentication | Level 6 |
| Junction Box | IP65 / IP67 |
| Frame | Aluminum Alloy |
| Cable | 1m |
| Connector | MC4 Compatible |



Tainergy Tech Co., Ltd.
 No.5,Tzu-Chiang 1st Road,
 Chungli Industrial Zone,
 Taoyuan Hsien, Taiwan
 TEL: +886-3-272-6688

Tainergy Tech Japan K.K.
 Room 303, Noa Shiba-Daimon,
 1-4-4 Shiba-Daimon, Minato-ku,
 Tokyo, 105-0012 Japan
 TEL: +81-3-6809-1331

E-MAIL: tainergy@tainergy.com

WEBSITE: www.tainergy.com