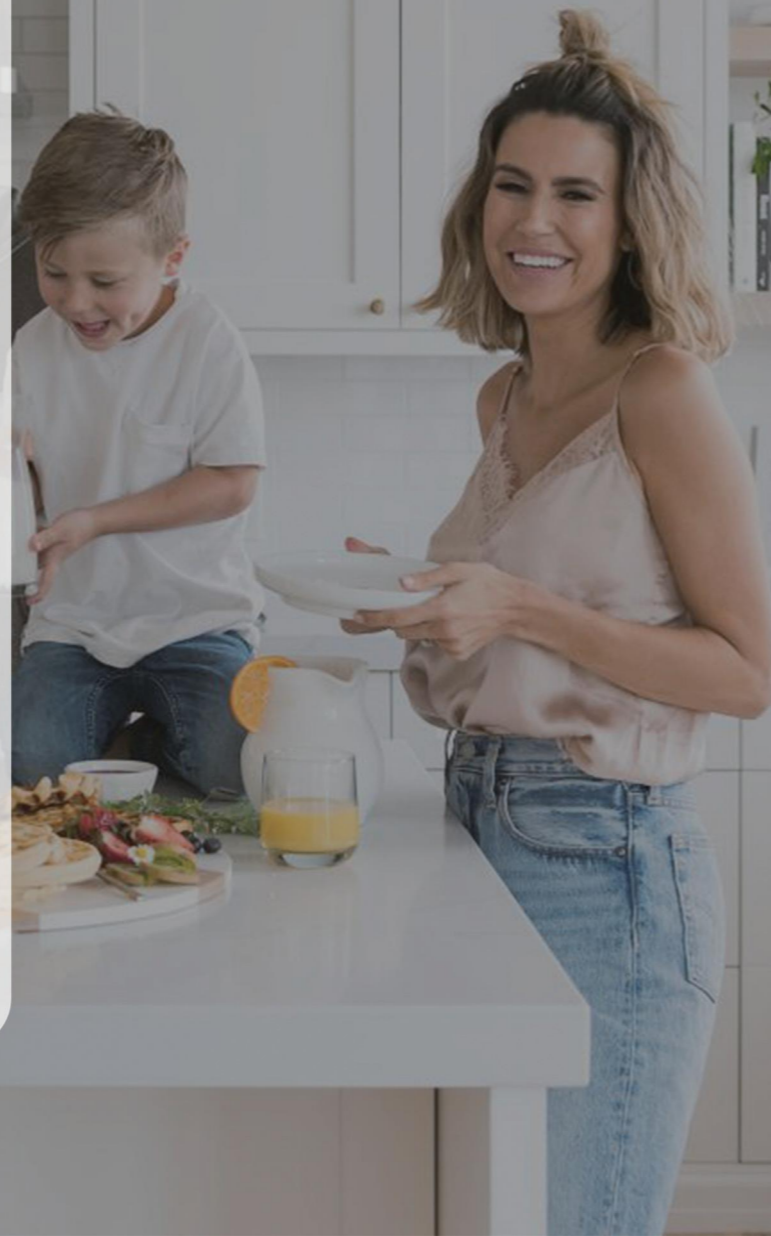


One-Stop Solar Energy Storage Solution

51.2v 200AH~600AH



- Space-saving and easy to install and operate
- LCD screen or WiFi function are available
- Cooling function ---double safety protection
- Indoor and outdoor workable
- Compatible with a variety of inverters
- Support a variety of communication protocols support RS485 RS232 CAN etc



Model	BRS-48200A	BRS-48300A	BRS-48400A	BRS-48500A
Main Parameter				
Cell Technology	All-in-One Power Lithium Energy Storage System			
Nominal Energy	10240Wh	15360Wh	20480Wh	25600Wh
Round-Trip Efficiency	5KW			
Weight	147KG/177KG (with packing)	207KG/237KG (with packing)	265KG/295KG (with packing)	325KG/355KG (with packing)
Dimensions(L/W/H)	580x510x810mm	580x510x1010mm	580x510x1210mm	580x510x1410mm
Warranty	5 Years Product Warranty			
	10 Years Performance Warranty			
Electrical Parameter				
Nominal Voltage	51.2V			
Nominal Capacity	200Ah	300Ah	400Ah	500Ah
Wheels	Removable			
Maximum Charge Current	3pcs pack	4pcs pack	5pcs pack	6pcs pack
Charge Current (-20 to -10 °C)	≤0.05C			
Recommended Charge Voltage	56V-57.6V			
BMS Charge Voltage Cut-Off	57.6V (3.75±0.025vpc)			
Reconnect Voltage	54.6V (3.34 ±0.05vpc)			
Case Material	Metal			
Enclosure Protection	IP54			
Maximum Continuous Discharge Current	100A			
Discharge Temperature	-20 to 60°C (-4 to 140 °F)			
Charge Temperature	0 to 45°C (32 to 113 °F)			
General Parameter				
Cycle Life	≥6000 Times (80% DOD)			
Service Life	10 Years Performance Warranty			
Protection Rating	IP21			
Display	SOC Status Indicator, LED Indicator			
Communication	RS485, RS232, CAN			
Charge Temperature Range	0°C-60°C (Under 0°C extra heating mechanism)			
Discharge Temperature Range	-20°C-60°C (Under 0°Cwork with reduced capacity)			
Storage Temperature Range	-40°C~55°C @ 60%±25% relative humidity			
Compatible Inverters	Victron、Pylon、Deye、SMA、Growatt、Goodwe、MPP、Voltronicpower、Pchne、Sofarsolar、Megarevo、Tbbpower、ARUN、Schneider Etc.			

* Compatible tests with different brands of inverter are continuously, updates will be periodically
 ** Under specific test conditions.