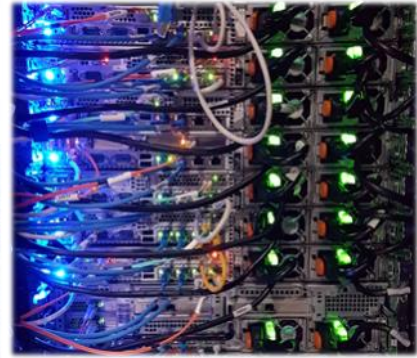


HYBRID 3-PHASE  
SOLAR INVERTER

# HV V3 30KW



- ✓ 3-Phase 400Vac Output
- ✓ Industrial Grade Power
- ✓ High 384Vdc System
- ✓ 950V Max PV Input
- ✓ Max 45KW PV Support

WARNING: must remain in UPRIGHT position at all times.

\*Specification may change without prior notice.

**HYBRID 3-PHASE SOLAR INVERTER**

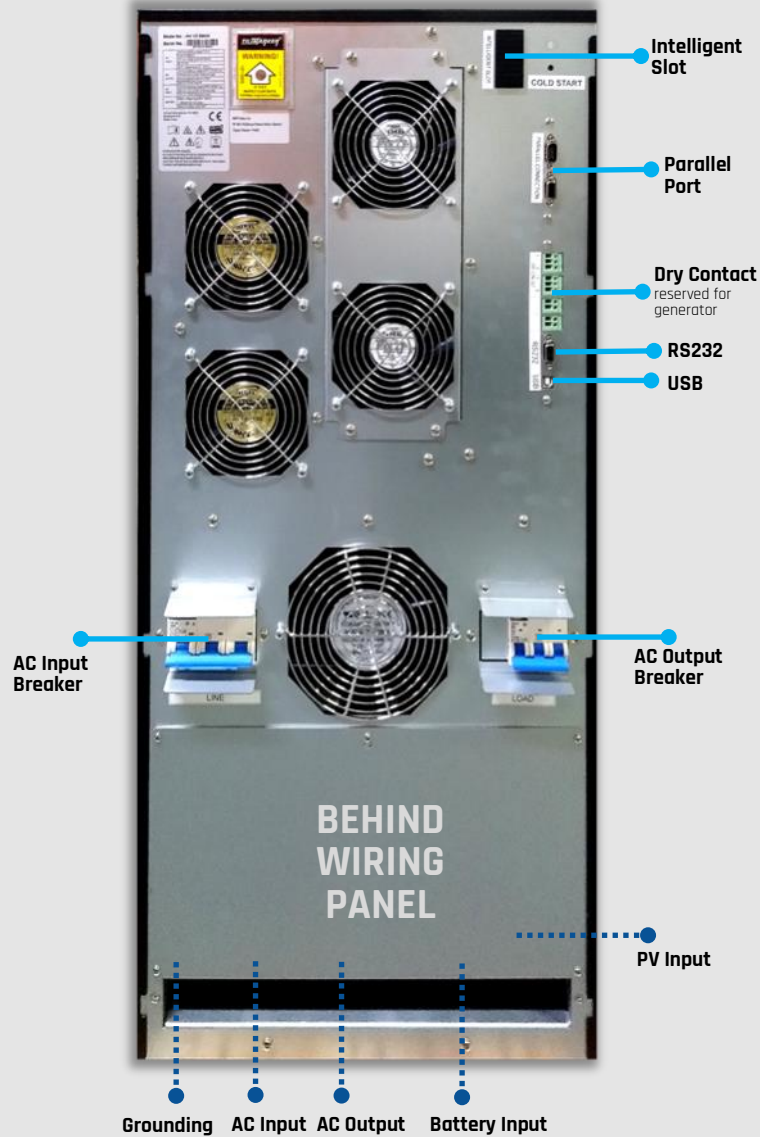
**GRID-TIE WITH BACKUP**



**GRID-TIE ONLY**



**OFF-GRID ONLY**

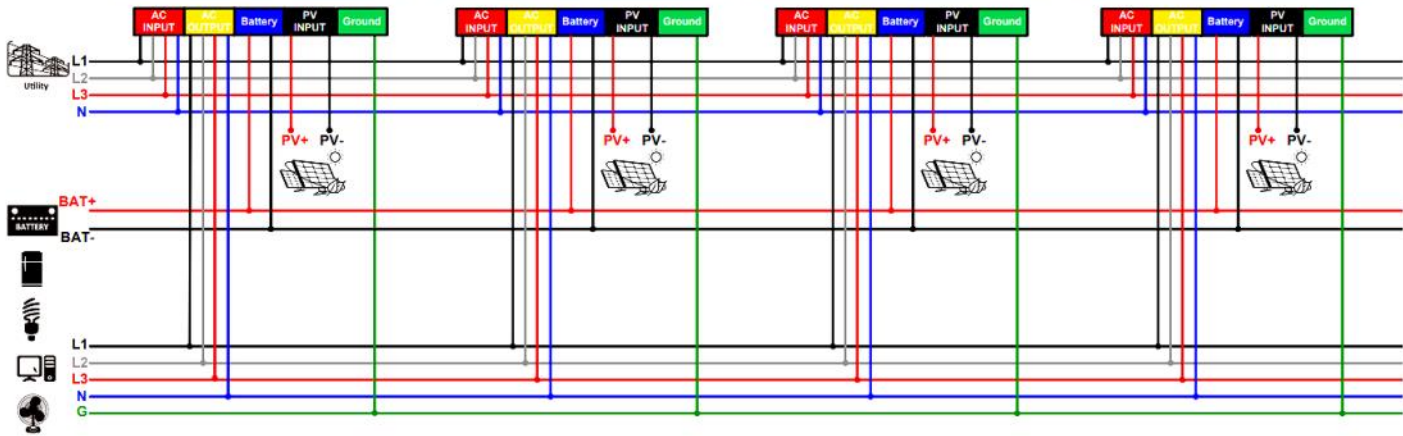
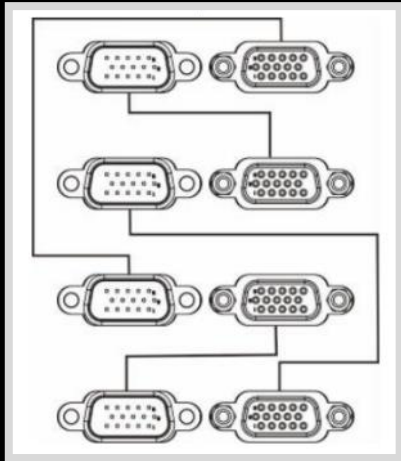




**HYBRID 3-PHASE  
SOLAR INVERTER**

**COM PORT CONNECTION:**

**PARALLEL UP TO 4  
UNITS MAX (120KW)**



## HYBRID 3-PHASE SOLAR INVERTER

HV V3 3-Phase Series	HV V3 30KW
<b>Rated Power</b>	
Continuous Output	30,000W
Parallel-Ready	Yes, up to 4 units
<b>PV Input Rating (GRID-TIE)</b>	
Max PV Input Power	45,000W
Max PV Input Voltage	950V
Start-up / Initial Feeding Voltage	500 / 550 VDC
PV MPPT Range	460 - 900 VDC
Max PV Input Current	72A
MPPT Tracker	1
<b>AC Input</b>	
Start-up / Auto Restart Voltage	150 - 170 / 180VAC, per phase
Input Voltage Range	170 - 280VAC per phase
Max AC Input Power	30,000W
Nominal Frequency	50 / 60 Hz
Max AC Input Current	43.5A per phase
<b>AC Output</b>	
Nominal AC Output Voltage	230VAC (P-N) / 400VAC (P-P)
Output Voltage Range	195.5 - 253Vac per phase
Output Frequency (GRID-TIE)	49 - 51Hz / 59.3 - 60.5 Hz
Output Frequency (OFF-GRID)	50 / 60Hz, auto-sensing
Output Waveform	Pure Sine Wave
Max Output Power (battery mode)	30,000W
Max DC/AC Conversion Efficiency	91%
<b>Battery Charger</b>	
DC Working Range	320 - 512VDC
DC Charging Range	384-480VDC
Nominal DC Voltage	384VDC
Max Charging Current	80A
<b>Environmental / Mechanical Specification</b>	
Ingress Protection Rating	IP20
Communication Port	RS232, USB
Certifications	CE
Operating Temp.	-10 to 55°C (power derating starts >50°C)
Operating Humidity	0 - 90% RH (No condensing)
Operating Altitude	max 2000m (power derating 1% per 100m beyond 1000m)
Dimension	1021 x 715 x 430mm
Net Weight	221KG

SPECIFICATIONS ARE SUBJECT TO CHANGE WITHOUT PRIOR NOTICE.