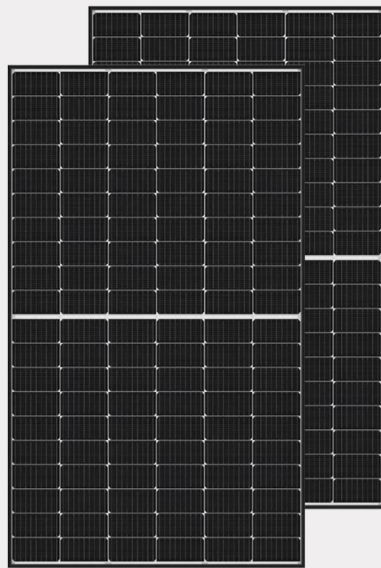




BSM375M-60HPH 355-375W

Black Frame



YOUR BEST PV SUPPLIER

375W

Maximum Power Output

20.4%

Maximum Module Efficiency

0~+5W

Power Output Guarantee



Ideal choice for large scale ground installation



More evenly distributed soldering points and better reliability and lower hot spot risk



Selected encapsulating material and stringent production process control ensure the product is highly PID resistant and snail trails free



Lower LID due to lower oxygen and carbon content



Special cell process ensures great performance under low irradiance conditions

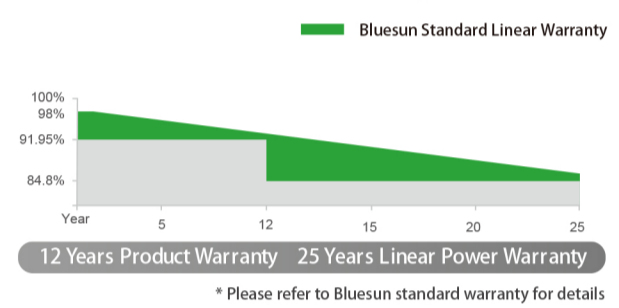


Provides higher module efficiency under low irradiance conditions, and achieves greater installation capacity in a limited space.

Key features

- World-class manufacturer of crystalline silicon photovoltaic modules
- Fully automatic facility and world-class technology
- Rigorous quality control to meet the highest standard: ISO9001:2015, ISO14001: 2015 and OHSAS: 18001 2007
- Tested for harsh environments (salt mist, ammonia corrosion and sand blowing test: IEC 61701, IEC 62716, DIN EN 60068-2- 68)
- Long term reliability tests
- 2× 100% EL inspection ensuring defect-free modules

Linear Performance Warranty



Certificate



+86 15710018905

info@orderspv.com



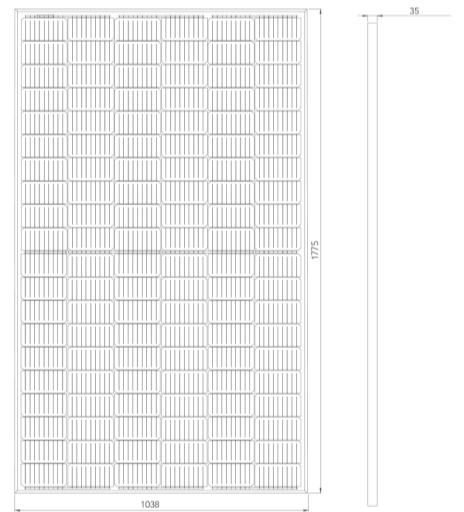
+86 15710018905

info@orderspv.com

ELECTRICAL PARAMETERS AT STC

Model	BSM355M-60HPH	BSM360M-60HPH	BSM365M-60HPH	BSM370M-60HPH	BSM375M-60HPH
Max Power(Pmax) [W]	355	360	365	370	375
Open Circuit Voltage(Voc) [V]	40.5	40.7	40.9	41.1	41.3
Short Circuit Current(Isc) [A]	11.10	11.15	11.20	11.26	11.31
Max Power Voltage(Vmp) [V]	34.0	34.3	34.6	34.9	35.2
Max Power Current(Imp) [A]	10.45	10.50	10.56	10.61	10.66
Module Efficiency [%]	19.3	19.6	19.8	20.1	20.4
Power Tolerance	0-5W				
Max System Voltage	DC 1500/1000(IEC)				
Max Series Fuse Rating	20A				
Operating Temperature	-40 C to +85 C				
STC	Irradiance 1000W/m ² , cell temperature 25 C, AM1.5				

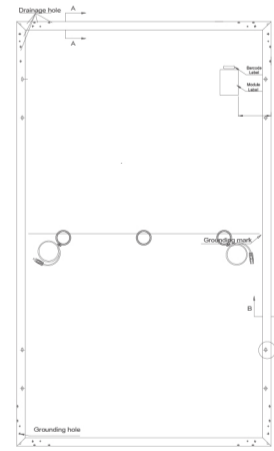
*For mechanical loading performance: front side maximum static loading 5400Pa, rear side maximum static loading 2400Pa; hailstone test: 25mm hailstone at the speed of 23m/s



NMOT

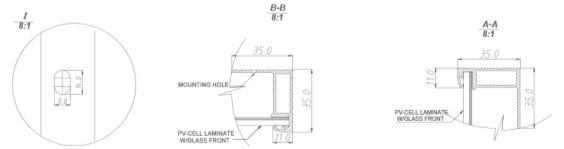
Model Number	BSM355M-60HPH	BSM360M-60HPH	BSM365M-60HPH	BSM370M-60HPH	BSM375M-60HPH
Max Power(Pmax) [W]	264.2	267.7	271.2	274.7	278.1
Open Circuit Voltage (Voc)	37.7	37.9	38.0	38.2	38.4
Short Circuit Current (Isc)	8.96	9.00	9.04	9.09	9.13
Maximum Power Voltage (Vmp)	31.4	31.6	31.9	32.1	32.3
Maximum Circuit Current (Imp)	8.43	8.46	8.50	8.55	8.60
NMOT	43±2°C				

*Irradiance 800 W/m², ambient temperature 20 °C, wind speed 1m/s



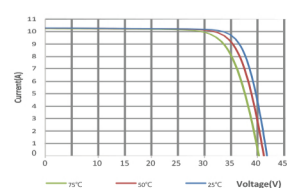
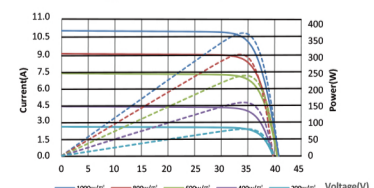
Mechanical Characteristics

Solar Cells	Mono Perc 166×166mm
Dimensions	1775x1038x35mm
Weight	21kg
Front Load	5400Pa
Connector Type	PV Connector
Junction Box	IP68,3/6 bypass diode
Cables	4mm ² (IEC)
Glass	3.2mm High Transmission Tempered Glass
Frame	Anodized Aluminium Alloy Frame
Packing	31pcs per pallet, 186pcs per 20'GP Container, 832pcs per 40'HQ Container



I-V Curves

Current-Voltage Curve (BSM375M-60HPH)



Temperature Characteristics

Temperature Coefficient of Pmax	γ (Pm)	-0.36%/C
Temperature Coefficient of Voc	β (Voc)	-0.26%/C
Temperature Coefficient of Isc	α (Isc)	0.043%/C

+86 15710018905

info@orderspv.com