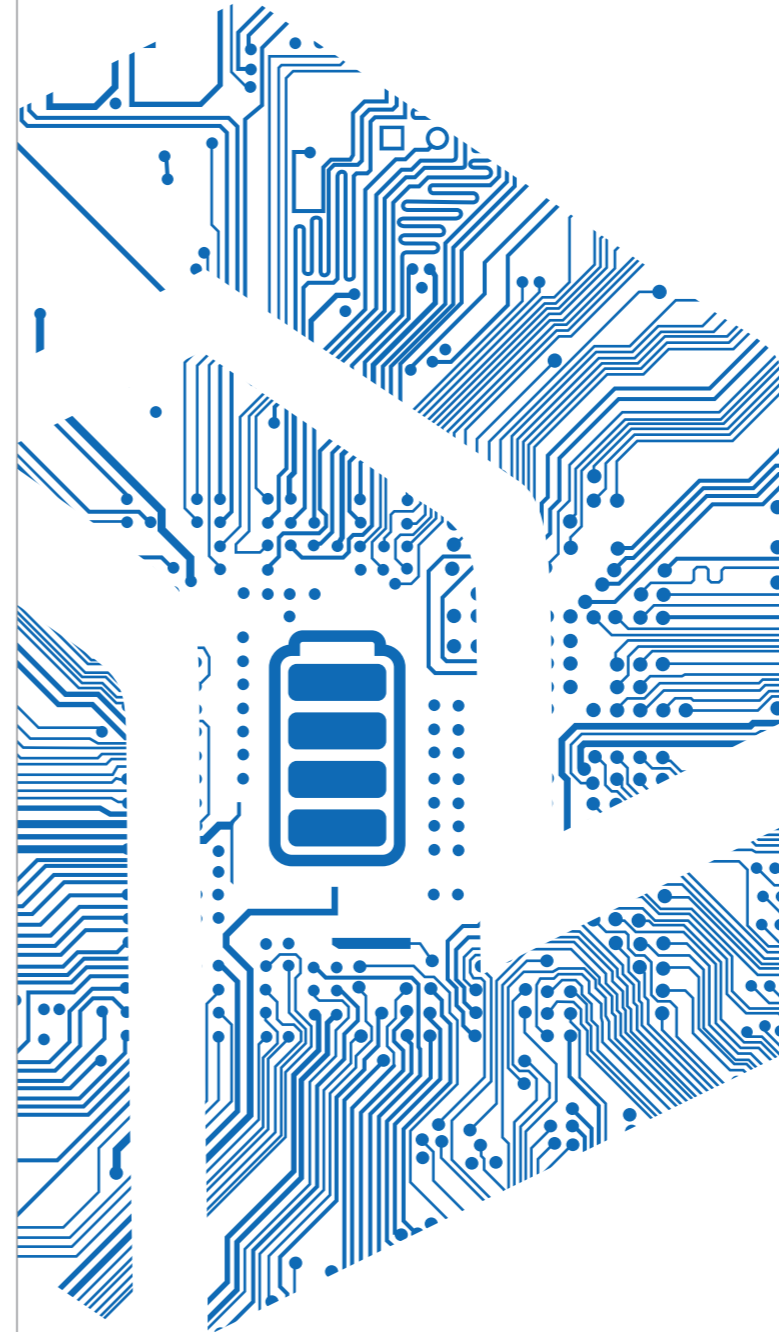


一起携手 共进未来

Working together for a better future



惠州市赛锂科技有限公司
HUIZHOU SAILI TECHNOLOGY CO., LTD

咨询热线：0752-3161306

公司地址：惠州市仲恺高新区西坑惠鹏兴产业园

Tel: 0752-3161306

Add: Hui Pengxing Industrial Park, Xikeng, Zhongkai High-Tech District, Huizhou, Guangdong, China

产品手册

PRODUCT
CATALOGUE



一起携手 共进未来

目录 CONTENTS

01/02 **公司简介** COMPANY PROFILE

03/04 **产品简介** PRODUCT INTRODUCTION

产品简介 Product Introduction

电池管理系统 (BMS) Battery Management System (BMS)

汽车级认证物料 Automotive-grade materials

成组工艺 Group technology

05/06 **产品功能** PRODUCT FUNCTION

控制终端T-BOX Control terminal T-box

实时大屏监控平台 Real time large screen monitoring platform

07 **产品优势** PRODUCT ADVANTAGES

08/23 **产品展示** PRODUCT EXHIBITION

叉车锂电池 LFP batteries for forklifts

AGV锂电池 LFP batteries for AGV

房车锂电池 LFP batteries for RVs

低速车锂电池 LFP batteries for low-speed vehicles

智能储备电池 Smart reserve power

储备锂电池 LFP batteries for home

一起携手 共进未来

WORKING TOGETHER FOR A BETTER FUTURE

一起携手 共进未来

公司简介 COMPANY PROFILE

惠州市赛锂科技有限公司（简称“赛锂科技”）是专注于锂电池研发、生产和销售为一体的具有竞争力的电池生产厂家。公司致力于提供锂电池全方位的解决方案，其中包括动力电池，储能电池，叉车电池，观光车电池，广泛应用于AGV锂电系统、AI智能锂电系统、叉车锂电系统、游艇、房车锂电系统等家庭储能等系统。

产品通过UN38.3、MSDS、CE等认证，并取得了ISO9001质量体系认证。

我们有专业的研发团队和核心管理团队，都来自锂电行业经验丰富的技术人员和管理专家。并坚持与国内外高校产学研结合自主创新，在锂离子电池模组开发与系统解决方案中能良好的控制成本及合理的市场定位，凭借多年的专业行业经验，奠定了企业定制化服务的核心竞争力。

以人才和技术为基础，创造优质的产品和提供舒适的服务。追求客户满意是我们坚定不移的目标，我们将提供定制化解决方案，用最好的服务和技术为您提供有力的保障！

同时积极响应国家发展战略，使产业链实现绿色、环保、循环的可持续发展。诚邀广大社会的电池人一起携手，共创未来！



Huizhou SaLi Technology Co., Ltd. (short for "SaLi Technology") is a competitive lithium battery manufacturer focusing on R&D, production and sales. We are committed to providing a full range of lithium battery solutions, including power batteries, energy storage batteries, forklift batteries, sightseeing vehicle batteries which can be

The products have passed UN38.3, MSDS, CE and other certifications, and also obtained ISO9001 quality system certification.

We have a professional R & D team and core management team who all are experienced technical personnel and management experts from the lithium industry. And we adhere to independent R&D from the university-industry collaboration with domestic and foreign universities. In the mean time, we also try to have a better cost control and reasonable market positioning in the development of lithium-ion battery modules and

Based on professionals and technology, we will create quality products and provide comfortable service to you. The pursuit of customer satisfaction is our unswerving goal, and we will provide customized solutions, with the best service and technology

At the same time, we respond to the national development strategy actively of making the industrial chain to achieve eco-friendly and sustainable development. We sincerely invite you working together to create a better future!

产品简介 PRODUCT INTRODUCTION



产品简介 Product Introduction

本公司电池包产品采用磷酸铁锂 (LFP- LiFePO4 Battery) 体系电芯, 磷酸铁锂作为电芯正极材料, 具有安全性好、能量密度高、循环寿命长、绿色环保等特点。

Our battery packs are using LiFePO4 (LFP) cells as the anode materials. The LFP batteries are very safe, with high energy density, long life cycles, eco-friendly etc.

电池管理系统 (BMS) Battery Management System

电池管理系统对单串电芯的监控, 有完善的过充、过放、过流、短路、温度保护, 并且电池具有独立的平衡功

The BMS provides protection against over charge, over discharge, overcurrent, short circuit, and over temperature through monitoring single string of cells. Also, it enables every battery pack to obtain

汽车级认证物料 Automotive-grade materials

采用汽车级物料, 产品性能稳定可靠。

Automotive-grade materials make the product performance more stable and reliable



软连接
soft connection



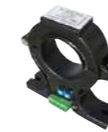
FPC/PCB
FPC/PCB



连接器
connector



保险
fuse



霍尔传感器
hall sensor



分流器
shunt



继电器
relay

成组工艺 Battery pack technology

采用新能源汽车动力电池成组工艺, 成组性能灵活, 组装标准严格, 成组性能稳定。

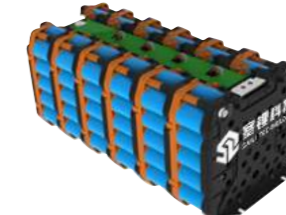
Battery pack technology is used for new energy vehicle power batteries to have a flexible grouping performance, strict assembling standards and stable grouping performance



软包工艺
Pouch battery pack



方壳工艺
Prismatic battery pack



圆柱工艺
Cylindrical battery pack

产品功能 PRODUCT FUNCTION

控制终端T-BOX Control terminal T-box

成为新一代的移动终端，实现电池的全生命周期管理

Become a new generation of mobile terminal, realize the battery life cycle management



应用 APPLICATION

- 远程鸣笛寻车 Remote whistle for car
- 异常自动报警 Abnormal automatic alarm
- 车辆实时状态 Real time status of vehicle
- 刷卡开关门 Swipe the card to open and close the door
- GPS定位神器 GPS positioning artifact

功能 FUNCTION

- 电池组的定位、通讯、状态采集、开关机；
Battery positioning, communication, status acquisition, switching
- 电池组的参数采集（电量、里程状态评估）；
Parameter acquisition of battery pack (power and mileage status assessment)

T-BOX 价值



实时大屏监控平台 Real time large screen monitoring platform

电池都搭载了北斗定位，GPS,GPRS定位功能，可以全球定位采集电池的运行数据，以更好的服务于客户。

The batteries are equipped with Beidou Positioning, GPS and GPRS positioning functions, which can collect battery operation data by global positioning, so as to better serve customers.

它结合了现代音、视频压缩技术、网络通讯技术、计算机控制技术、流媒体传输技术，采用模块化的软件设计理念，将不同客户的需求以组件模块的方式实现，提供强大、灵活的网络集中监控综合解决方案。

It combines the modern audio and video compression technology, network communication technology, computer control technology, streaming media transmission technology, adopts the modular software design concept, realizes the needs of different customers in the way of component module, and provides a powerful and flexible network centralized monitoring integrated solution.



产品优势 PRODUCT ADVANTAGE

优势 Advantages

采用多系统集成的电池管理系统及配电，其主要功能：

电池通讯： 电池管理系统可采用485/CAN/232多种方式与终端系统进行通讯，与整车实现稳定交互。

电量均衡： 电池管理系统根据电芯状态判断是否启动均衡，提高电芯一致性。

绝缘检测： 电池管理系统检测电池母线与箱体间绝缘，保护使用人员的安全。

电量计算： 电池管理系统采用电流积分和静态电压修正方法计算电池电量SOC，电量显示准确。

温度检测： 电池管理系统拥有温度采样，具有电池过温、低温保护、温度补偿等功能。

过充保护： 电池过充电时，电池可通过BMS进行保护，保证充电环境安全。

过放保护： 电池过放电时，电池可通过BMS进行保护，保护电池使用状态不超出正常范围。

过流保护： 电机过载时，电池可通过BMS进行保护，保护电池使用状态不超出正常范围。

短路保护： 电路短路时，电池可通过BMS进行保护，保护整车短路极端状态下的电路安全。

To use multi-system integrated battery management system and distribution point, the main functions are:

Battery communications: The BMS can be communicated via 485/CAN/232 with the terminal systems to achieve stable interaction with the vehicle

Balancing: The BMS can judge the balancing statement according to the cell condition to improve the consistency.

Insulation monitoring: The BMS can monitor the insulation between battery busbar and the housing to ensure safety

Battery calculating: The battery SOC is calculated by current integration and static voltage correction to show an accurate data

Temperature monitoring: The BMS has temperature sampling function which including battery over temperature protection, low temperature protection, temperature compensation function etc

Overcharge protection: when the battery is overcharged, the battery can be protected by BMS to ensure the safety of the charging environment

Over discharge protection: when the battery is over discharged, the battery can be protected by BMS to keep the operating condition in the normal range

产品展示 PRODUCT DEMONSTRATION



叉车锂电池 LFP batteries for Forklifts

赛锂科技是专业研发生产各类叉车锂电池系统的源头厂家。

Sali Technology is a LFP battery manufacturer with professional R&D ability for forklifts

电压 (Voltage) : 24V,48V,72V,80V 容量 (Capacity) : 100Ah-800Ah



80V叉车锂电池系统



72V叉车锂电池



48V叉车锂电池系统



24V叉车锂电池系统

80V/72V/48V/24V LFP battery systems for forklifts

产品序号(serial number) : SL-DDCC-00001

48V 560Ah电动叉车磷酸铁锂电池LFP batteries for e-forklifts

应用领域 : LXWEF5型电池, 应用于1.0/1.2吨轻型叉车中。常用车型有德国永恒力-EJE, 浙江杭叉-CDD12J, 海斯特-P1.8P2.0S1.0, 林德L10/12, EGU-20S等。

Applications: LXWEF5 batteries can be used in 1.0/1.2 ton's light forklifts. Commonly used models: JUNGHEINRICH-EJE, HANGCHA-CDD12J,



优点 : 密封等级高; 循环寿命长; 能量密度高, 重量轻; 安全性能好; 绿色环保

Advantages: High sealing grade, long life cycles, high energy density, light weight, very safe, eco-friendly

电池型号 Battery model	SL-16S3P@CC-02A
标称电压 Nominal voltage	51.2V
标称容量 Nominal capacity	720Ah
充电电压 Charge voltage	58.4V
放电截止电压 Discharge cut-off voltage	40V
建议充电电流 Suggested charge current	100~300A
建议放电电流 Suggested discharge current	0~400A
常温循环寿命 Maximum current	3000次
通讯方式 Communication mod	RS 485 或 CAN 或 RS-232Rs485 or CAN or RS-232
充电温度 Charge temperature	0~55°C
放电温度 Discharge temperature	-20~60°C
接口型号 Model of the interface	ANDERSEN 或 REMA 或 TE 或者其他标准件或客户指定型号 ANDERSEN or REMA or TE Or other parts/customized models
电池尺寸 Battery size	270×230×190mm (可调整 adjustable)

产品序号(serial number) : SL-DDCC-00002

24V 240Ah 电动叉车磷酸铁锂电池LFP batteries for e-forklifts

应用领域 : LXWEF5型电池, 应用于1.0/1.2吨轻型叉车中。常用车型有德国永恒力-EJE, 浙江杭叉-CDD12J, 海斯特-P1.8P2.0S1.0, 林德L10/12, EGU-20S等。

Applications: LXWEF5 batteries can be used in 1.0/1.2 ton's light forklifts. Commonly used models: JUNGHEINRICH-EJE, HANGCHA-CDD12J,



优点 : 密封等级高; 循环寿命长; 能量密度高, 重量轻; 安全性能好; 绿色环保

Advantages: High sealing grade, long life cycles, high energy density, light weight, very safe, eco-friendly

电池型号 Battery model	SL-16S3P@CC-01A
标称电压 Nominal voltage	25.6V
标称容量 Nominal capacity	240Ah
充电电压 Charge voltage	29.2V
放电截止电压 Discharge cut-off voltage	20V
建议充电电流 Suggested charge current	50~120A
建议放电电流 Suggested discharge current	0~240A(可加热管理调整 Self-heating management)
常温循环寿命 Maximum current	3000次
通讯方式 Communication mod	RS 485 或 CAN 或 RS-232Rs485 or CAN or RS-232
充电温度 Charge temperature	0~55°C
放电温度 Discharge temperature	-20~60°C
接口型号 Model of the interface	ANDERSEN 或 REMA 或 TE 或者其他标准件或客户指定型号 ANDERSEN or REMA or TE Or other parts/customized models
电池尺寸 Battery size	627×212×624mm (可调整 adjustable)



AGV锂电池 LFP batteries for AGVs

赛锂科技是专业研发生产各类AGV锂电池系统的源头厂家。

Sali Technology is a LFP battery manufacturer with professional R&D ability for AGVs

电压 (Voltage) : 24V,48V,72V,80V 容量 (Capacity) : 40Ah-800Ah



24V AGV锂电池



24V AGV锂电池



48V AGV锂电池



60V AGV锂电池



轨道搬运车AGV锂电池

24V/48V/60V LFP battery systems for AVGs / LFP batteries for rail truck AGVs

产品序号(serial number) : SL-AGB-00001

28.8V 90Ah AGV运输车磷酸铁锂电池LFP batteries for transport AGVs

应用领域 : 工业机器设备, AGV小车等

Applications: industrial equipment, AGVs etc.

优点 : 循环寿命长; 能量密度高, 重量轻; 安全性能好; 绿色环保

Advantages: long life cycles, high energy density, light weight, very safe, eco-friendly



电池型号 Battery model	SL-9S1P@AGB-01A
标称电压 Nominal voltage	28.8V(25.6V 可选 Alternative)
标称容量 Nominal capacity	90Ah (30-90Ah 可选 Alternative)
充电电压 Charge voltage	32.85V
放电截止电压 Discharge cut-off voltage	22.5V
建议充电电流 Suggested charge current	20~90A (Maximum current up to 瞬间可达120A)
建议放电电流 Suggested discharge current	0~90A
瞬间最大电流 Maximum current	120~180A
常温循环寿命 Life cycle at normal temperature	3000次 times
通讯方式 Communication mod	RS 485 或 CAN 或 RS-232Rs485 or CAN or RS-232
充电温度 Charge temperature	0~55°C
放电温度 Discharge temperature	-20~60°C
接口型号 Model of the interface	ANDERSEN 或 REMA 或 TE 或者其他标准件或客户指定型号 ANDERSEN or REMA or TE Or other parts/customized models
电池重量 Battery weight	About 约22KG
电池尺寸 Battery size	627×212×624mm (可调整 adjustable)

产品序号(serial number) : SL-AGB-00004

48V 240Ah AGV磷酸铁锂电池LFP batteries for AGVs

应用领域: 工业机器设备, AGV大型车, 低速车, 电动车等。

Applications: industrial equipment, AGVs etc.

优点: 循环寿命长; 能量密度高, 重量轻; 安全性能好; 绿色环保

Advantages: long life cycles, high energy density, light weight, very safe, eco-friendly



电池型号 Battery model	SL-15S1P@AGV-03A
标称电压 Nominal voltage	48V(51.2V可选 Alternative)
标称容量 Nominal capacity	20Ah (10-20Ah可选 Alternative)
充电电压 Charge voltage	54.75V
放电截止电压 Discharge cut-off voltage	37.5V
建议充电电流 Suggested charge current	5~15A
建议放电电流 Suggested discharge current	0~20A (可加热管理调整 Self-heating management)
瞬间最大电流 Maximum current	30~40A
常温循环寿命 Life cycle at normal temperature	3000次 times
通讯方式 Communication mod	RS 485 或 CAN 或 RS-232Rs485 or CAN or RS-232
充电温度 Charge temperature	0~55°C
放电温度 Discharge temperature	-20~60°C
接口型号 Model of the interface	ANDERSEN 或 REMA 或 TE 或者其他标准件或客户指定型号 ANDERSEN or REMA or TE Or other parts/customized models
电池重量 Battery weight	About 约8KG
电池尺寸 Battery size	300×237×165mm (可调整 adjustable)

产品序号(serial number) : SL-AGB-00003

25.6V 60Ah AGV磷酸铁锂电池LFP batteries for AGVs

应用领域: 工业机器设备, AGV小车等

Applications: industrial equipment, AGVs etc.

优点: 循环寿命长; 能量密度高, 重量轻; 安全性能好; 绿色环保

Advantages: long life cycles, high energy density, light weight, very safe, eco-friendly



电池型号 Battery model	SL-8S2P@AGB-02A
标称电压 Nominal voltage	25.6V
标称容量 Nominal capacity	60Ah (30-60Ah可选 Alternative)
充电电压 Charge voltage	29.2V
放电截止电压 Discharge cut-off voltage	20V
建议充电电流 Suggested charge current	5~30A
建议放电电流 Suggested discharge current	0~60A (可加热管理调整 Self-heating management)
瞬间最大电流 Maximum current	80~120A
常温循环寿命 Life cycle at normal temperature	3000次 times
通讯方式 Communication mod	RS 485 或 CAN 或 RS-232Rs485 or CAN or RS-232
充电温度 Charge temperature	0~55°C
放电温度 Discharge temperature	-20~60°C
接口型号 Model of the interface	ANDERSEN 或 REMA 或 TE 或者其他标准件或客户指定型号 ANDERSEN or REMA or TE Or other parts/customized models
电池重量 Battery weight	About 约15KG
电池尺寸 Battery size	270×230×190mm (可调整 adjustable)

产品序号(serial number) : SL-AGB-00002

48V 240Ah AGV磷酸铁锂电池LFP batteries for AGVs

应用领域: 工业机器设备, AGV大型车, 低速车, 电动车等。

Applications: industrial machinery and equipment, AGV large vehicles, low speed vehicles, electric vehicles, etc.

优点: 密封等级高; 循环寿命长; 能量密度高, 重量轻; 安全性能好; 绿色环保

Advantages: High sealing grade, long life cycles, high energy density, light weight, very safe, eco-friendly



电池型号 Battery model	SL-8S2P@AGB-02A
标称电压 Nominal voltage	25.6V
标称容量 Nominal capacity	60Ah (30-60Ah可选 Alternative)
充电电压 Charge voltage	29.2V
放电截止电压 Discharge cut-off voltage	20V
建议充电电流 Suggested charge current	5~30A
建议放电电流 Suggested discharge current	0~60A (可加热管理调整 Self-heating management)
瞬间最大电流 Maximum current	80~120A
常温循环寿命 Life cycle at normal temperature	3000次 times
通讯方式 Communication mod	RS 485 或 CAN 或 RS-232Rs485 or CAN or RS-232
充电温度 Charge temperature	0~55°C
放电温度 Discharge temperature	-20~60°C
接口型号 Model of the interface	ANDERSEN 或 REMA 或 TE 或者其他标准件或客户指定型号 ANDERSEN or REMA or TE Or other parts/customized models
电池重量 Battery weight	About 约15KG
电池尺寸 Battery size	270×230×190mm (可调整 adjustable)

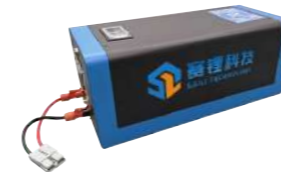


房车锂电池 LFP batteries for RVs

赛锂科技是专业研发生产各类房车锂电池系统的源头厂家。

Sali Technology is a LFP battery manufacturer with professional R&D ability for RVs

电压 (Voltage) : 12V,24V,48V 容量 (Capacity) : 100Ah-1800Ah



12V房车锂电池



24V房车锂电池



48V房车锂电池



逆控一体房车锂电池

12V/24V/48V LFP batteries for Rvs

Reverse LFP batteries for integrated RVs



低速车锂电池 LFP batteries for low-speed vehicles

赛锂科技是专业研发生产各类低速车锂电池系统的源头厂家。

Sali Technology is a LFP battery manufacturer with professional R&D ability for low-speed vehicles



60V低速车锂电池



72V低速车锂电池



银鱼款锂电池

产品序号(serial number) : SL-DDC-00001-4U

银鱼款锂电池

应用领域 : 低速车, 电动车等。

Applications: industrial equipment, AGVs etc.

优点 : 循环寿命长; 能量密度高, 重量轻; 安全性能好; 绿色环保

Advantages: long life cycles, high energy density, light weight, very safe, eco-friendly



电池型号 Battery model	SL-DDC-00001
标称电压 Nominal voltage	36V/48V
标称容量 Nominal capacity	10AH/12AH/15AH
充电电压 Charge voltage	42V/54.6V
放电截止电压 Discharge cut-off voltage	30V/39V
建议充电电流 Suggested charge current	≤5A
建议放电电流 Suggested discharge current	≤10A
瞬间最大电流 Maximum current	100A
常温循环寿命 Life cycle at normal temperature	3000次 times
通讯方式 Communication mod	/
充电温度 Charge temperature	0~45°C
放电温度 Discharge temperature	-20~60°C
接口型号 Model of the interface	充电口: 卡侬/DC2.1 放电口: 品字公座/品字母座 可选或按客户指定型号
电池重量 Battery weight	4.2~4.5KG
电池尺寸 Battery size	110*76*395mm(可调整adjustable)



智能储备电源 Smart reserve power

赛锂科技是专业研发生产各类智能储备锂电池系统的源头厂家。

Sali Technology is a LFP battery manufacturer with professional R&D ability for Intelligent reserve lithium battery

电压 (Voltage) : 51.2V 容量 (Capacity) : 100Ah



通信后备式铁锂电池系统

Communication backup iron lithium battery system

应用领域: 适用于小容量接入网设备、远端交换局、移动通信设备、传输设备、卫星地面站和微波通讯设备等备用电源。
优点: 具备集中控制、电池维护和管理的功能，满足无人值守的要求；可以通过手机APP来进行实时监控。

Applications: It was suitable for power supply such as small capacity access network devices, remote exchange bureau, mobile communication devices, transmission devices, satellite earth station and microwave communication devices

Advantages: It had the function of central control, battery maintenance and management to meet the requirements of no one on duty; it could be monitored in real time

基本参数 Basic Specifications

电池型号 Battery model	SL-CN-00001-4U
标称电压 Nominal voltage	51.2V
标称容量 Nominal capacity	100AH
充电电压 Charge voltage	58.4V
放电截止电压 Discharge cut-off voltage	40V
建议充电电流 Suggested charge current	≤50A
建议放电电流 Suggested discharge current	≤100A
瞬间最大电流 Maximum current	125A(小于1秒)
常温循环寿命 Life cycle at normal temperature	>6000 cycles
通讯方式 Communication mod	2个RS485和1个RS232
充电温度 Charge temperature	0~45°C
放电温度 Discharge temperature	-20~60°C
接口型号 Model of the interface	充电口：2P栅格端子 放电口：2P栅格端子
电池重量 Battery weight	大约42KG
电池尺寸 Battery size	W446xT177x(L400-450mm可调整 adjustable)



家用储能电池系统 Residential Energy Storage System

赛锂科技是专业研发生产各类智能储备锂电池系统的源头厂家。

Sali Technology is a LFP battery manufacturer with professional R&D ability for Intelligent reserve lithium battery

电压 (Voltage) : 51.2V 容量 (Capacity) : 100Ah



家用储能电池系统

Residential Energy Storage System

应用领域: 适用于家庭自动化控制、家庭智能化控制、家庭紧急备用电源、太阳能一体储备电源。

优点: 具备集中控制、电池维护和管理的功能，满足无人值守的要求；可以通过手机APP来进行实时监控。

Applications: It is suitable for home automatic control, home intelligent control, home emergency standby power supply and solar integrated reserve power supply.

Advantages: It had the function of central control, battery maintenance and management to meet the requirements of no one on duty; it could be monitored in real time

基本参数 Basic Specifications

电池型号	Battery model	SL-CN-00001-A
标称电压	Nominal voltage	51.2V
标称容量	Nominal capacity	100AH
充电电压	Charge voltage	58.4V
放电截止电压	Discharge cut-off voltage	40V
建议充电电流	Suggested charge current	≤50A
建议放电电流	Suggested discharge current	≤100A
瞬间最大电流	Maximum current	125A(小于1秒)
常温循环寿命	Life cycle at normal temperature	>6000 cycles
通讯方式	Communication mod	2个RS485和1个RS232
充电温度	Charge temperature	0~60°C
放电温度	Discharge temperature	-20~60°C
接口型号	Model of the interface	充电口：2P栅格端子 放电口：2P栅格端子
电池重量	Battery weight	大约52KG
电池尺寸	Battery size	450x442x198.5 (L*W*H)



储备锂电池 LFP batteries for home

赛锂科技是专业研发生产各类家用锂电池系统的源头厂家。
Sali Technology is a LFP battery manufacturer with professional R&D ability for home

智能扫地机器人电源 Smart robot vacuum batteries

应用领域：product area定制产品，扫地机电源

Applications: customized floor scrubber batteries

优点：四串锂电池保护板，单双个MOS，带NTC/PTC/二级保护

Advantages: 4 series lithium battery guard, single/double MOS,
NTC/PTC/secondary protection



家庭储能系列- 储能电源

Home Energy Storage Series - Energy Storage Power Supply

500W-1000W



应用领域：太阳能或市政电力充电

覆盖99%USB充电设备（手机、平板电脑、摄像头）

提供USB QC3.0端口，支持QC快速充电协议（移动快速充电）

提供C型，60W，PD协议，直接适配PD协议笔记本电源

提供DC12V汽车点烟器接口，可为汽车紧急启动、汽车气泵等供电

DC 12V输出端口，用于无人机、RC飞机等的室外充电。

交流110V或220V端口可为大多数中小型家用电器（电视、电风扇、室内照明）供电

优点：内置LED照明，提供低亮度、高亮度、SOS和闪光灯四种模式它是一种室内外多用电源，为户外旅行、频繁停电、无电源区提供备用电源。

Applications: Solar or municipal electric utilities

Cover 99% of USB charging devices (mobile phones, tablets, cameras)

USB QC 3.0 output, support QC fast charge (mobile fast charge)

Type C PD output, 60W, directly adapts to the notebook power supply with PD

DC12V car cigarette lighter socket can be connected to jump start a car or the air bump in emergency situations

DC 12V output, can be used with UAVs, RC aircraft and other outdoor devices

AC output 110V or 220V can be charged for most of small and medium household appliances (TVs, fans and indoor lighting)

Advantages: built-in LED lighting, four modes for choices-low or high brightness, SOS and flash lights It is a multiple-purpose power supply for indoor and outdoor, such as providing backup power for travel, frequent power failure and no power supply area.

智能充电打火电源 Smart jump starter



轮胎充气
Tire Inflation



应急照明
Emergency Lighting



应急点火
Emergency Ignition



一起携手 共进未来

基本参数 Basic Specifications

产品名称 product name	A8车载充气泵 (jump starter)
产品尺寸 product size	195*129*50 (mm)
输入电压 input voltage	5V/3A
输出电压 output voltage	5V/3A
工作环境 working environment	-40°C ~80°C
裸机重量 bare weight	960g

应用领域：应急点火，轮胎充气，手机数码充电，应急照明

优点：无线充气+柴油双启，大容量**18000mAh**，+80~-40°C极限使用温度，双**USB**输出口，智能能源管理系统，配备**LED**灯和显示屏。

Applications: emergency ignition, tire inflation, digital mobile phone charging, emergency lighting

Advantages: wireless inflation+diesel or gasoline vehicle start, large capacity **18000mAh**, +80~-40°Cextreme temperature range, double **USB** outputs, smart BMS, LED lighting and smart