

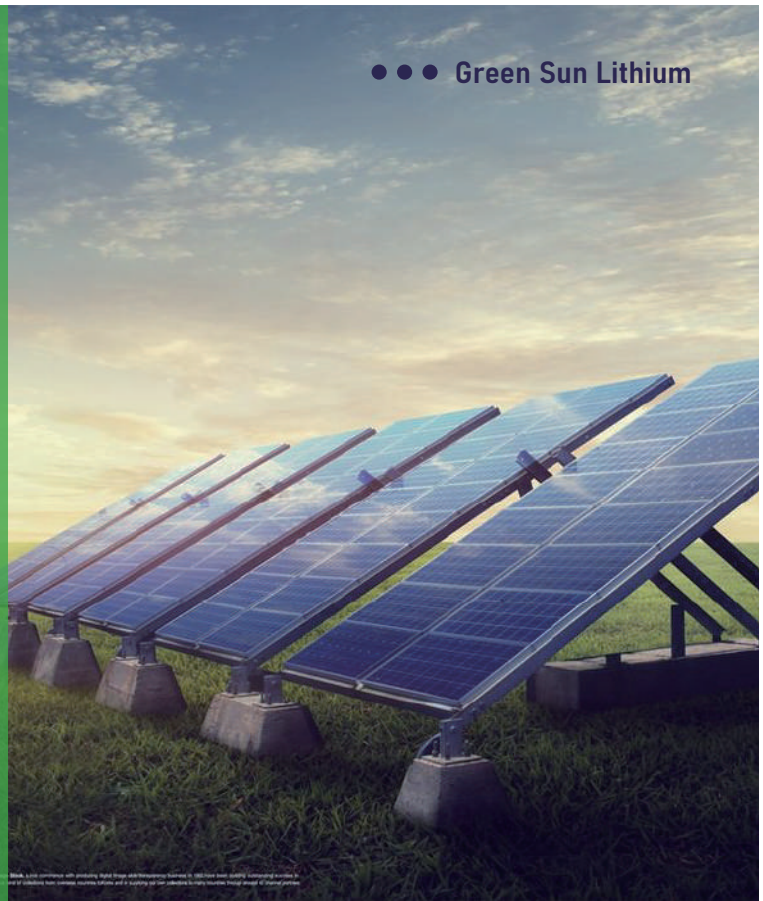
GSL ENERGY

World leading lithium battery custom solutions and intelligent manufacturing service provider

Lithium Iron Phosphate (LiFePO4) Battery

GSL-25.6V 200AH-5120WH

Nine functional modules



It has the discharge function of power battery



Support 2S to 51.2V and 4P to 800AH



The warranty period is 10 years



High and low temperature protection



Easy to disassemble and maintain



Start the development of battery protection plate

WARNING

DO NOT DISASSEMBLE/MAY EXPLODE IN FIRE
DO NOT EXPOSE TO TEMPERATURE ABOVE 60°C OR 140°F
USE ONLY RECOMMENDED BATTERY CHARGER

UL IEC CE UN38.3 MSDS

■ Specification

| Product Model | GSL-25.6-200-ABS | |
|-----------------------------|--|-------------------------------------|
| Electrical Characteristics | Normal Voltage | 25.6V |
| | Rated Capacity | 200±1Ah(0.2C) |
| | Energy | About 5120Wh |
| | Internal Resistance | ≤ 120mΩ |
| | Cycle Life | ≥ 2,000@0.2C (100%DOD) |
| | | ≥ 6,000@0.2C (80%DOD) |
| | | ≥ 10,000@0.2C (50%DOD) |
| Passive Protection Function | Over charge protection, Over discharge protection, Temperature protection, Balanced function | |
| Standard Charge | Charging Voltage | 29.2V |
| | Limited Charging Voltage | 29.2V |
| | Max. Charging Current | 100A |
| | Max. Discharging Current | 200A |
| | Discharge Cut-off Voltage | 20V |
| Environmental | Charge Temperature | 0~55°C |
| | Discharge Temperature | 0~55°C |
| | Storage Temperature | -20~45°C |
| Mechanical | Dimensions (L*W*H) | 522*269*218mm |
| | Weight | 48Kg |
| | BMS support | 2pcs in series, parallel connection |

■ Features of LiFePO4 Battery

- **Reliable quality:**

We focus on the various parts of production, from selection of supplier to the production of material to lithium battery cell production to assemble of battery pack, make sure the traceability of the products.

- **Long cycle time:**

Offers up to 10 times longer cycle life than lead acid battery. Helping to minimize replacement cost and reduce total cost of ownership.

- **Higher power:**

Delivers twice power of lead acid battery with higher discharge rate. Also can sustain higher charge current and limit the charge time.

- **Lighter weight:**

About 50% of the weight of a comparable lead acid battery. A drop in replacement for lead acid battery. Wider temperature range :-20°C -60°C.

- **Super safety:**

Lithium battery eliminates the risk of explosion or combustion due to high impact, overcharged or short circuit situation.

- **Environment friendly:**

Lithium battery material do not have any poisonous and harmful substances both in production and use. Now it is widely accepted by more and more countries.

