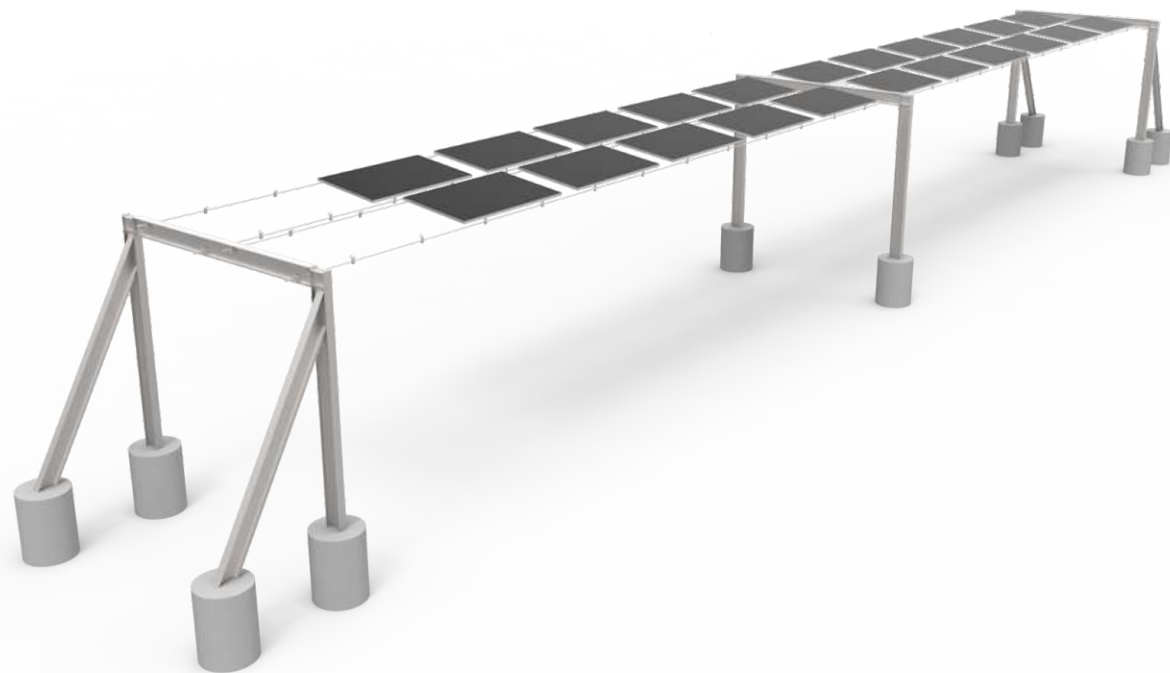


GS-Smart Ground Mounting System Solution

Flexible Mounting System



• System Introduction

GS-Smart Flexible mounting solution is an architectural form that fix solar modules between the buildings .It has significant advantages when applied in large span areas, such as rivers, sewage treatment plants, orchard nursery and other areas where continuous pile posts cannot be placed.

Through the four installation methods of hanging, pulling, hanging and bracing, the GS-Smart Flexible mounting solution can be installed freely in many directions, which can better improve the support method of distributed solar power plant especially C&I markets.

• Suitable Power Plant Project

Suitable for plant where ;large span and hard to posts.

• Features

- The span is 10-30 meters, better enviroment
- Reduce the consumption of steel structure and qty of pile post to reduce cost and increase efficiency.
- Easy installation.
- Safe, reliable and trustworthy

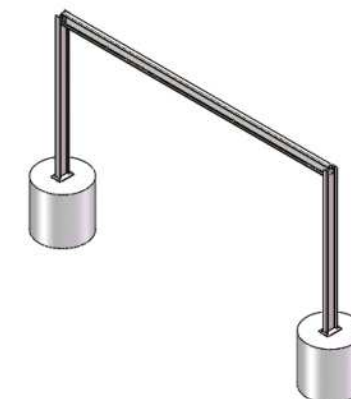
• Technical Information

Installation site	Ground
Angle	10° , 15° , 20°
Material	Steel or Stainless Steel
Color	Natural color or customized
Surface treatment	HDG or ZAM
Maximum wind speed	≤60m/s
Maximum snow cover	≤3.6KN/m²
Reference standards	GB5009 & ASCE7-05 & Other
Usage time	More than 25 years
Quality assurance	10-year quality assurance

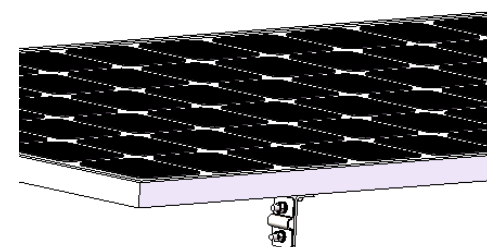
• Parts



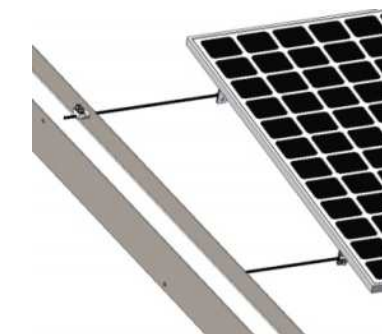
Edge Support Strcuture



Mid Support Structure



Module Fixed Kits



Fasterned system for steel rope