

# NBJ-340P-72

JINSHI SOLAR MODEL

## 72 CELLS

MULTICRYSTALLINE MODULE

## 320-340W

POWER OUTPUT RANGE

## 17.5%

MAXIMUM EFFICIENCY

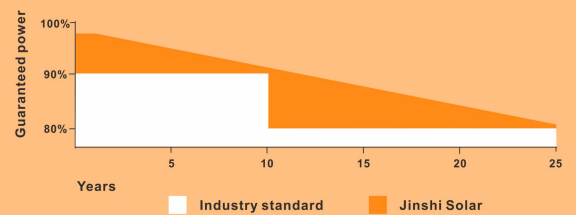
## 0~+3%

POWER OUTPUT GUARANTEE

- Solar cell: High efficiency crystalline solar cell. Even if under the weak light, the solar multicrystalline module can produce maximum power output.
- Tempered glass: Anti-reflecting coating and high transmission rate glass increasing the power output and mechanical strength of solar module.
- EVA and TPT: Using high quality EVA and TPT to prevent destroying and water.
- All frames: Without screws corner connection. 8 holes on the frame can be installed easily.
- Junction box: Multi-functional and IP 68 rated water-proof junction box.
- Good performance of preventing from atrocious weather such as wind and hails.
- Resisting moisture and etching effectively, not effected by geology.
- Certificates issued by international authorities: ISO Quality Management system, CE, TUV ( IEC61215 and IEC61730 )
- Limited power degradation of Eagle module caused by PID effect is guaranteed under 60°C/85% RH condition for mass production.
- High salt and ammonia resistance certified by TUV NORD

### LINEAR PERFORMANCE WARRANTY

15 Year product warranty • 25 Year linear power warranty



#### Mechanical Characteristics:

Cell Size (mm)	PERC POLYCRYSTALLINE CELL
No. of cells	72(6X12)
Module Size (mm)	1956X992X40
Module Weight (KG)	21

#### Packing Details:

Container	20'GP	40'HQ
Pieces pallet	52	56
Pallets per container	5	12
Pieces par container	260	672

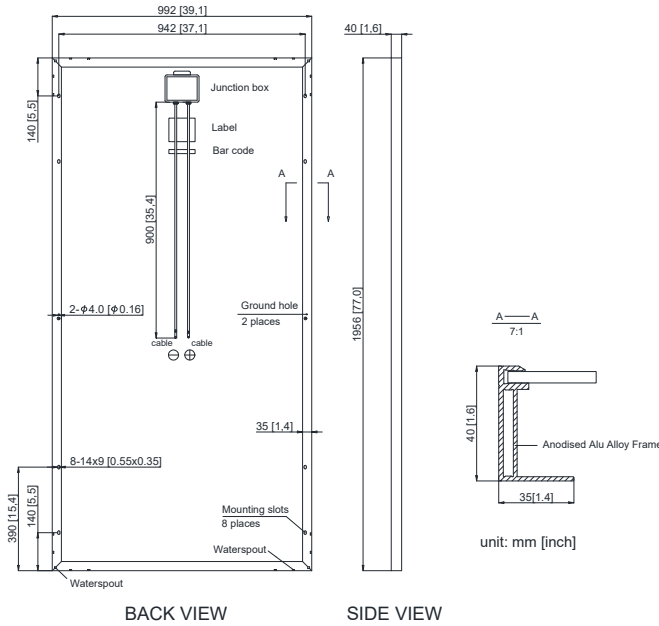
This publication summarizes product warranty and specification, which is subject to change without notice.



**Construction Materials:**

Front Glass	3.2mm, Low Iron, Tempered Glass	Connector	MC4 (IP68)
Frame	Anodized Aluminum Alloy Type 6063-T5	Encapsulation Material	EVA(0.45±0.03mm thickness)
Junction Box	IP 68 Rated (Black)	Back Foil	White TPT(0.32±0.03mm thickness)
Output Cables	TUV 1×4mm <sup>2</sup> , length:900mm	Fixing Adhesive	Silicone Sealant(White)

**Module Diagram:**



**Temperature Coefficient:**

Power Tolerance	0~+3%
Temperature Coefficient of Pmax	(-0.43±0.05)%/°C
Temperature Coefficient of Voc	(-0.33±0.02)%/°C
Temperature Coefficient of Isc	(0.058±0.01) %/°C
NOTC(°C)	(47±2) °C

**Operating Conditions:**

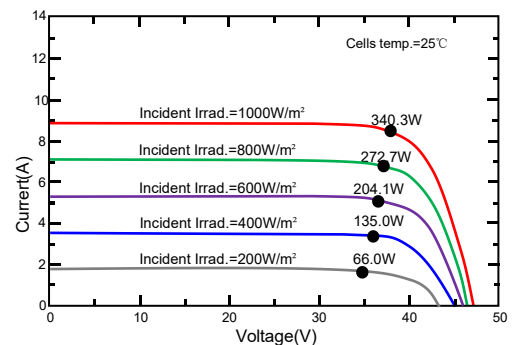
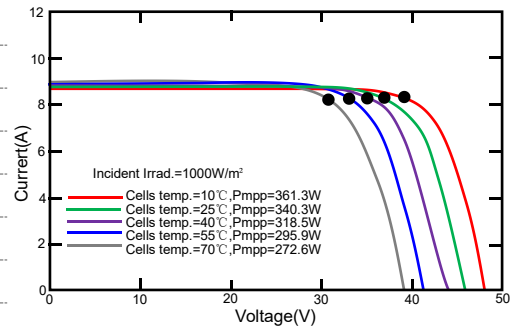
Max. system voltage	1500DVC (IEC)
Max. system fuse rating (A)	15
Operating temperature (°C)	-40~85
Max. static load, front (e.g., snow) pa	5400
Max. static load, back (e.g., wind) pa	2400

**Electrical Parameters at Standard Test Conditions (STC)**

Module type	NBJ-320P-72	NBJ-325P-72	NBJ-330P-72	NBJ-335P-72	NBJ-340P-72
Rated Maximum Power (Pmax/W)	320	325	330	335	340
Maximum Power Voltage (Vmp/V)	37.45	37.71	37.85	38.00	38.30
Open-circuit Voltage (Voc/V)	45.75	46.00	46.14	46.34	46.49
Maximum Power Current (Imp/A)	8.55	8.62	8.72	8.82	8.88
Short-circuit Current (Isc/A)	9.00	9.06	9.18	9.26	9.32
Module Efficiency (%)	16.5	16.7	17.0	17.3	17.5

STC: Irradiance 1000W/M2      Module Temperature: 25°C      AM=1.5

**I-V Curve:**



This publication summarizes product warranty and specification, which is subject to change without notice.