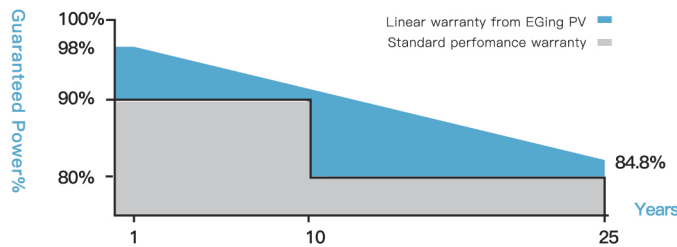
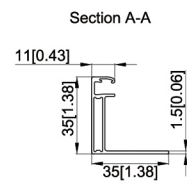
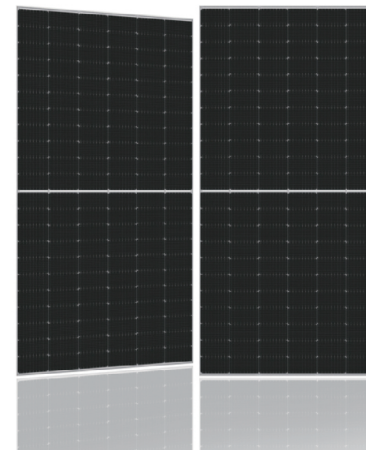


PRODUCT INTRO

EfMc Series

MONO CRYSTALLINE SOLAR MODULE


485W~505W



QUALITY GUARANTEED


- ① Linear output power guaranteed
- ② 10 years product warranty
- ③ 25 years linear power output






High Efficiency

Advanced solar cell technology ensures the high module efficiency up to 21.3%.




Positive Power Selection

Module will generate power selection of 0 to +5W.




Strong Load Capacity

Module is capable to withstand 2400Pa wind loads and 5400Pa Snow loads.



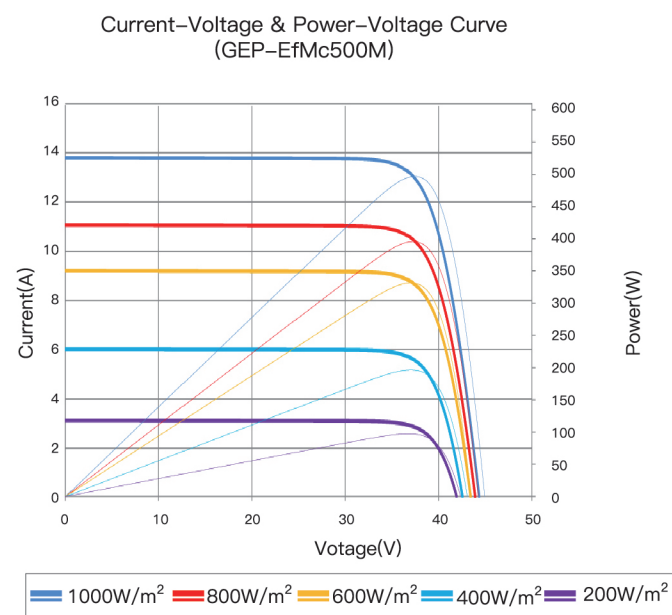
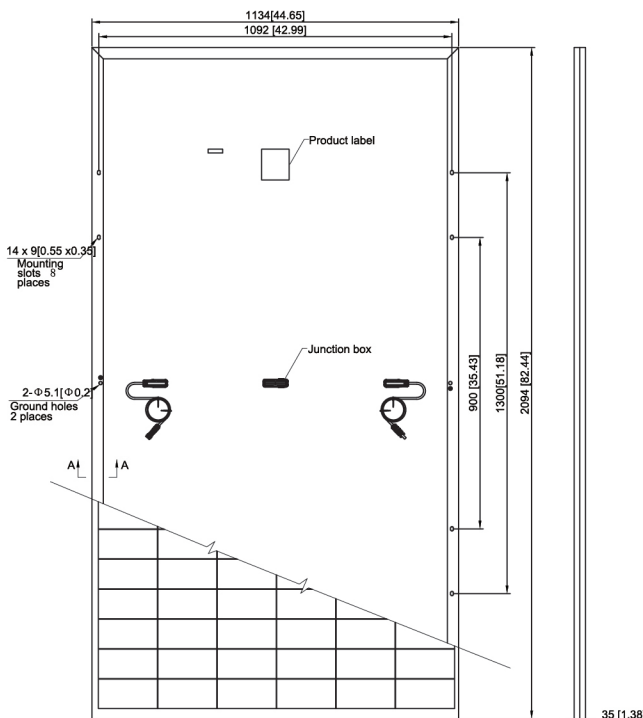
Reliable quality

Module is manufactured in accordance with international quality standards ISO9001



Higher Weatherproof Rating

J-Box performs module with an environmental protection rating to IP68.



MODULE CHARACTERISTICS

Models	GEP-EfMc485M	GEP-EfMc490M	GEP-EfMc495M	GEP-EfMc500M	GEP-EfMc505M
	GEP-EfMc485MH	GEP-EfMc490MH	GEP-EfMc495MH	GEP-EfMc500MH	GEP-EfMc505MH
Maximum Power (Pmax)	485W	490W	495W	500W	505W
Positive Power Selection	0/+5W	0/+5W	0/+5W	0/+5W	0/+5W
Maximum Power Voltage (Vmp)	37.81V	37.99V	38.17V	38.35V	38.53V
Maximum Power Current (Imp)	12.83A	12.90A	12.97A	13.04A	13.11A
Open Circuit Voltage (Voc)	45.20V	45.33V	45.45V	45.59V	45.72V
Short Circuit Current (Isc)	13.72A	13.79A	13.85A	13.93A	14.00A
Module Efficiency	20.4%	20.6%	20.9%	21.1%	21.3%
Operating module Temperature	- 40°C ~ +85°C				
Maximum system(DC) Voltage	DC1000V/1500V(IEC)				
Maximum Series Fuse Rating	25A				
Nominal Module Operating Temperature	42±2°C				
Temperature Coefficients of Pmax	- 0.36%/°C				
Temperature Coefficients of Voc	- 0.304%/°C				
Temperature Coefficients of Isc	+ 0.050%/°C				

MECHANICAL CHARACTERISTICS

Solar Cell	182x91mm 10 Mono crystalline 182x91mm 10BB
Number of cells	132(6x22)
Dimensions	2094x1134x35mm (82.44x44.65x1.38 inches)
Weight	26.3Kg (57.98 lbs)
Front Glass	3.2mm (0.13 inches) front glass
Frame	Anodized aluminum alloy
Junction Box	IP68 rated
Cable	4mm ² solar cable 300mm (11.81 inches) Customized Length
Connector	MC4 PV-XT101.1/Z4S-abcde

PACKING

	20GP	40HC
Pieces per pallet	31	31
pallets per container	5	22
Pieces per container	155	682

STC: irradiance 1000 W/m², module temperature 25°C, AM=1.5; Tolerance of Pmax is within +/- 3%.