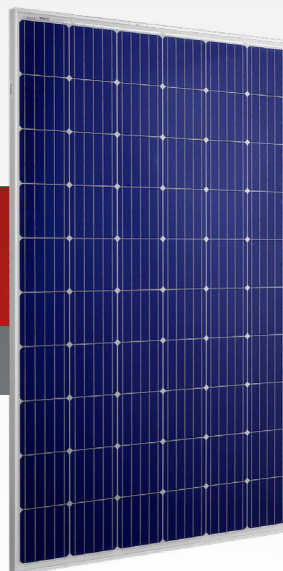


# PV Modules [ACCESSORIES]

## Code

PV Modules: 015834 (160Wp PV module)  
016390 (300Wp PV module)



## Caratteristiche prodotto PV 160 Wp Module



160 Wp power



Standard busbars



1480x670x30mm

## [eng] Product features



Polycrystalline



Aluminium frame

## [fra] Caractéristiques du produit



36 Cells



Certified according to IEC 61215  
and IEC 61730 standards

## Caratteristiche prodotto PV 300 Wp Module



300 Wp power



5 busbars



1644x992x36mm

## [eng] Product features



Monocrystalline



Aluminium frame

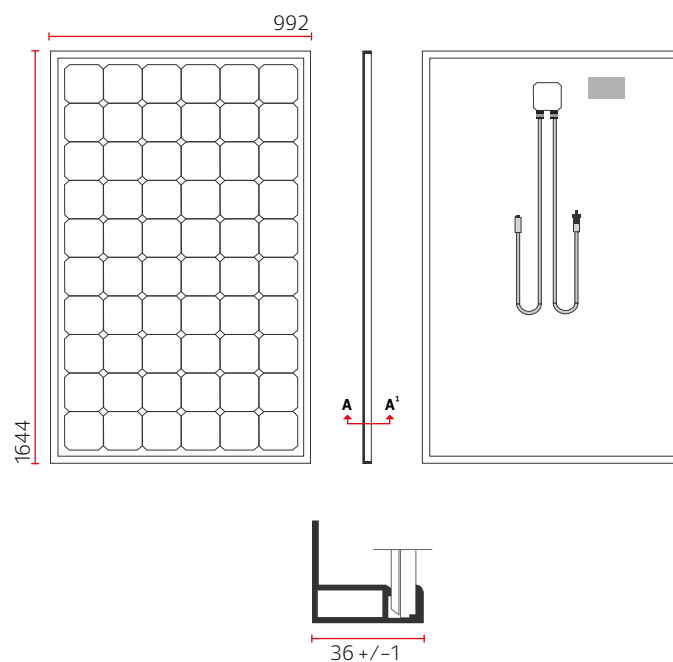
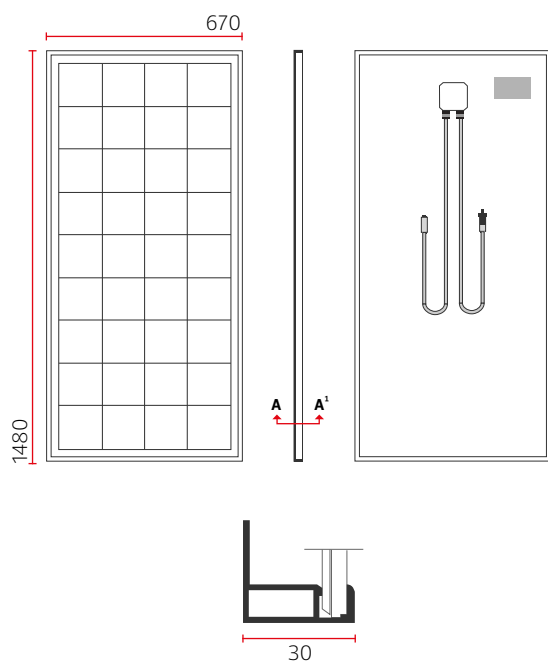
## [fra] Caractéristiques du produit



60 Cells



Certified according to IEC 61215  
and IEC 61730 standards

**Dimensioni (mm)****[eng]**  
Dimensions (mm)**[fra]**  
Dimensions (mm)**Caratteristiche elettriche****[eng]**  
Electrical specifications**[fra]**  
Fonctionnalités électroniques

	<b>WP-FV 160</b>	<b>WM-FV 300</b>
<b>Max power Pmax</b>	160Wp	300Wp
<b>Max power voltage Vmp</b>	18,65V	32,64V
<b>Max power current Imp</b>	8,59A	9,19A
<b>Open circuit voltage Voc</b>	23,00V	39,24V
<b>Short circuit current Isc</b>	9,18A	9,74A
<b>Min warranted power Pmin</b>	160,00Wp	300,00Wp
<b>Working tolerance</b>	-0/+3Wp	-0/+10Wp
<b>Module efficiency</b>	16,10%	18,40%
<b>NOCT</b>	45 ± 3 °C	45 ± 3 °C
<b>Max system voltage</b>	1000V	1000V
<b>Pmax temperature coefficient</b>	-0,36% /°C	-0,40% /°C
<b>Voc temperature coefficient</b>	-0,26% /°C	-0,34% /°C
<b>Isc temperature coefficient</b>	0,06% /°C	0,03% /°C
<b>Mechanical load</b>	5400Pa	5400Pa
<b>Junction box protection degree</b>	IP67	IP67
<b>Connectors</b>	MC4 comp.	MC4 comp.
<b>Bypass diodes</b>	2	3
<b>Max reverse current</b>	15A	20A
<b>Glass thickness</b>	3.2mm	3.2mm
<b>Weight</b>	12kg	19kg