

MADE IN EUROPE

12 YEARS QUALITY WARRANTY



AFM-60-310



PID FREE

For Consistent Performance



El Tested

0% defects



+ < 5W

Positive Power Tolerance



Excellent Performance under low light



18th Atena Street, 011832 - Bucharest, Romania



+40 314 137 444



office@altius-solar.com



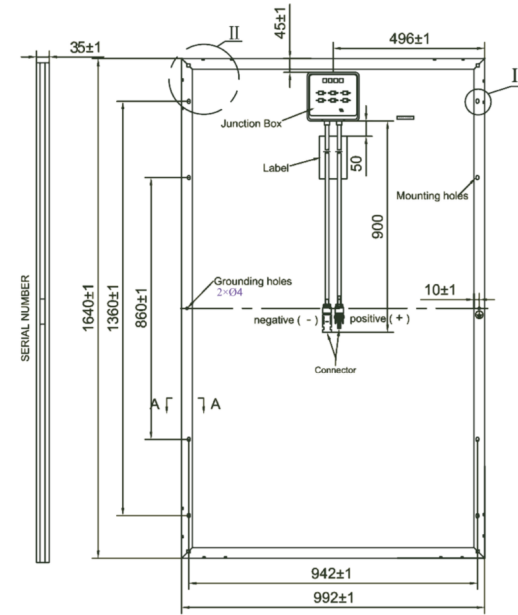
www.altius-solar.com

AFM - 60 - 310W

ELECTRICAL Characteristics	Unit	AFM-310
Nominal Power at STC (P_{mp})	W	310
Power Tolerance	W	0 ~ 5W
Power Maximum at STC	W	314.99
Cell Efficiency (η_c)	%	21.5
Module Efficiency (η_m)	%	18.3
Open Circuit Voltage (V_{oc})	V	40.2
Short-Circuit Current (I_{sc})	A	9.87
Maximum Power Voltage (V_{mp})	V	33.2
Maximum Power Current (I_{mp})	A	9.35
Maximum System Voltage	V	1000(TUV), 600(UL)
Maximum Series Fuse Rating	A	15

STC: Irradiance 1000W/m², Module Temperature 25°C, AM=1.5;

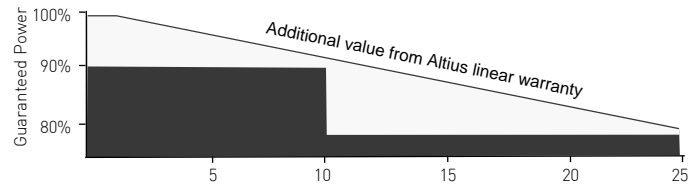
Power measurement tolerance: +/-3%



Temperature Characteristics	
P_{max} Temperature Coefficient	-0.45% / °C
V_{oc} Temperature Coefficient	-0.35% / °C
I_{sc} Temperature Coefficient	+0.04% / °C
Operating Temperature	-40~+85°C
Temperatura Nominala de Operare a Celulei	45 ± 2°C

Performance Warranty

1 Year Output 97.5% 2-24 Year Decrease <0.7% 25 Years Output 80,7%



Container	20 ft	40 ft
Bucati per palet	26	26
Paletti per container	12	28
Bucati per container	312	728

Mechanical Specifications

External Dimensions	1640 x 992 x 35mm
Weight	19.0kg
Solar Cells	Monocrystalline 156x156mm (60pcs)
Front Glass	3.2mm tempered glass, low iron
Frame	Anodized/Electrophoretic aluminium alloy
Junction Box	IP67
Output Cables	4.0mm ² , symmetrical lengths 900mm
Connector	MC4
Maximum Snow Load	5400 Pa
Maximum Wind Load	5400 Pa

Curbe Curent-Tensiune & Putere-Tensiune

