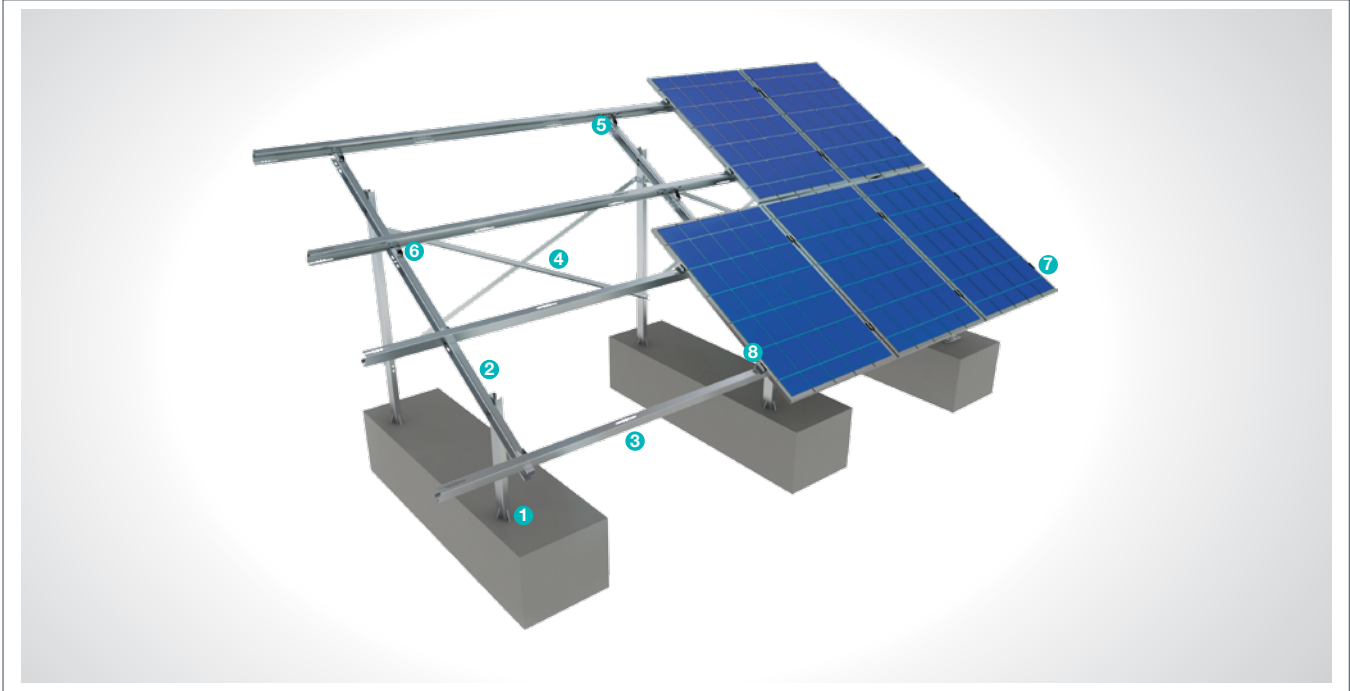


## (KPT5) Concrete Base Anchored Steel Mounting System with 2 Vertical Panels

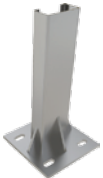
### Overview

KPT5, is a concrete base anchored steel support and mounting system with 2 vertical panels for open terrain solar panels. The system is an ideal application solution for PV projects installations on sloped medium and large sized terrains. It provides the necessary strength and stability for application in loose ground. After manufacturing the system components with high-technology machines and equipment, an excellent corrosion resistance is then achieved through hot-dip galvanized coating. The system, incorporating a high-level engineering design, provides assembly and cost advantages.



#### STEEL COLUMN

1



■ **CK-90 / CK-100 / CK-120**  
M12X30 Knurled Bolt  
M12 Flanged Nut  
M12 Washer

#### STEEL BEAM

2



■ **CR-100 / CR-120**  
M12X30 Knurled Bolt  
M12 Flanged Nut  
M8X30 Knurled Bolt  
M8 Flanged Nut  
M8/M12 Washer

#### STEEL PURLIN

3



■ **CA-90 / CA-100 / CA-110**  
M12X30 Knurled Bolt  
M12 Flanged Nut  
M8X30 Knurled Bolt  
M8 Flanged Nut  
M8/M12 Washer

#### STEEL L BRACKET

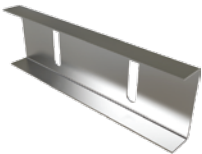
4



■ **CL-40X40 / CL-50X50**  
M12X30 Knurled Bolt  
M12 Flanged Nut  
M12 Washer

#### PURLIN CONNECTOR JOINING PIECE

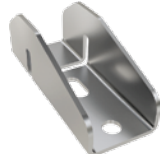
5



■ **C-90 / C-100 / C-110**  
M12X30 Knurled Bolt  
M12 Flanged Nut  
M12 Washer

#### PURLIN CONNECTOR PIECE

6



■ **U40**  
M8X30 Knurled Bolt  
M8 Flanged Nut  
M8 Washer

#### PANEL SIDE RETAINER

7



■ **H30-H32-H40**  
M8X30 Hex Bolt  
M8 Flanged Nut

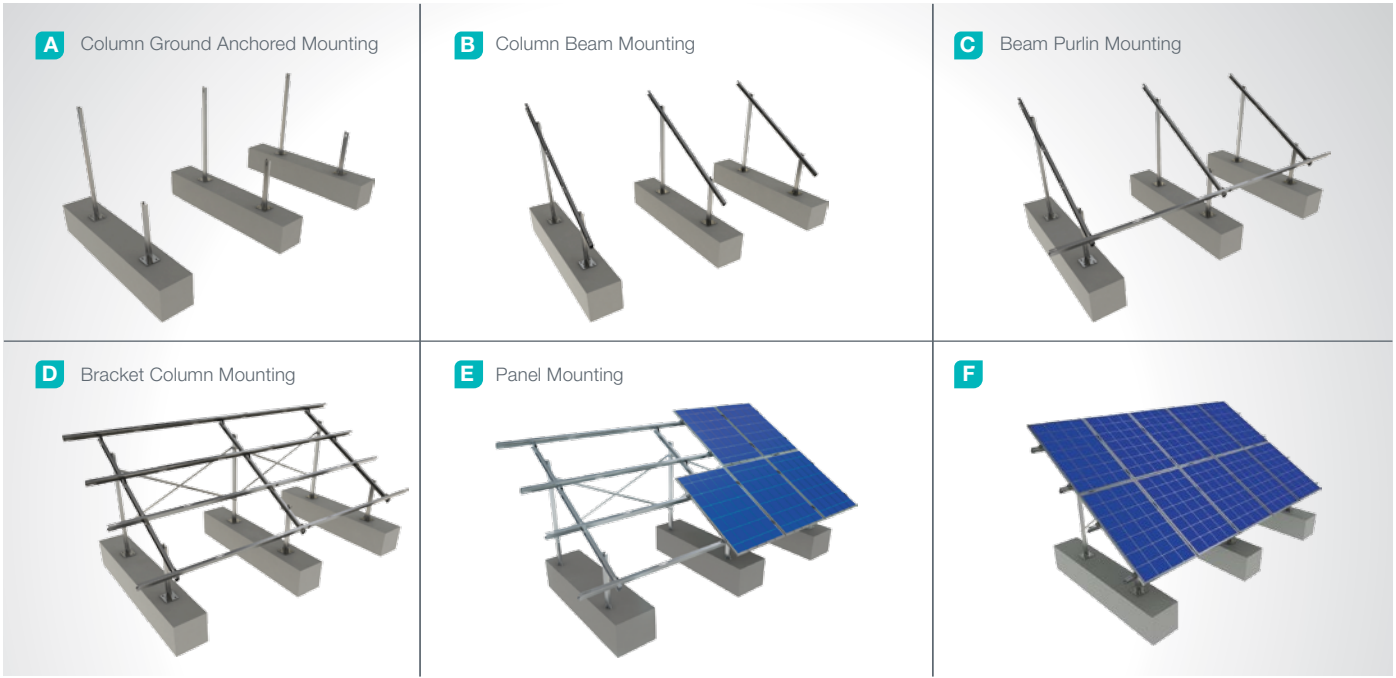
#### PANEL CENTER RETAINER

8



■ **L70**  
M8X30 Hex Bolt  
M8 Flanged Nut

## Installation Phase



## Advantages

- Time saving for installation
- Cost saving for installation
- Flexible solutions for different types of terrains
- Suitable for loose ground
- Suitable for slopped terrains
- Tailored design solutions for customer
- Customer oriented engineering solutions

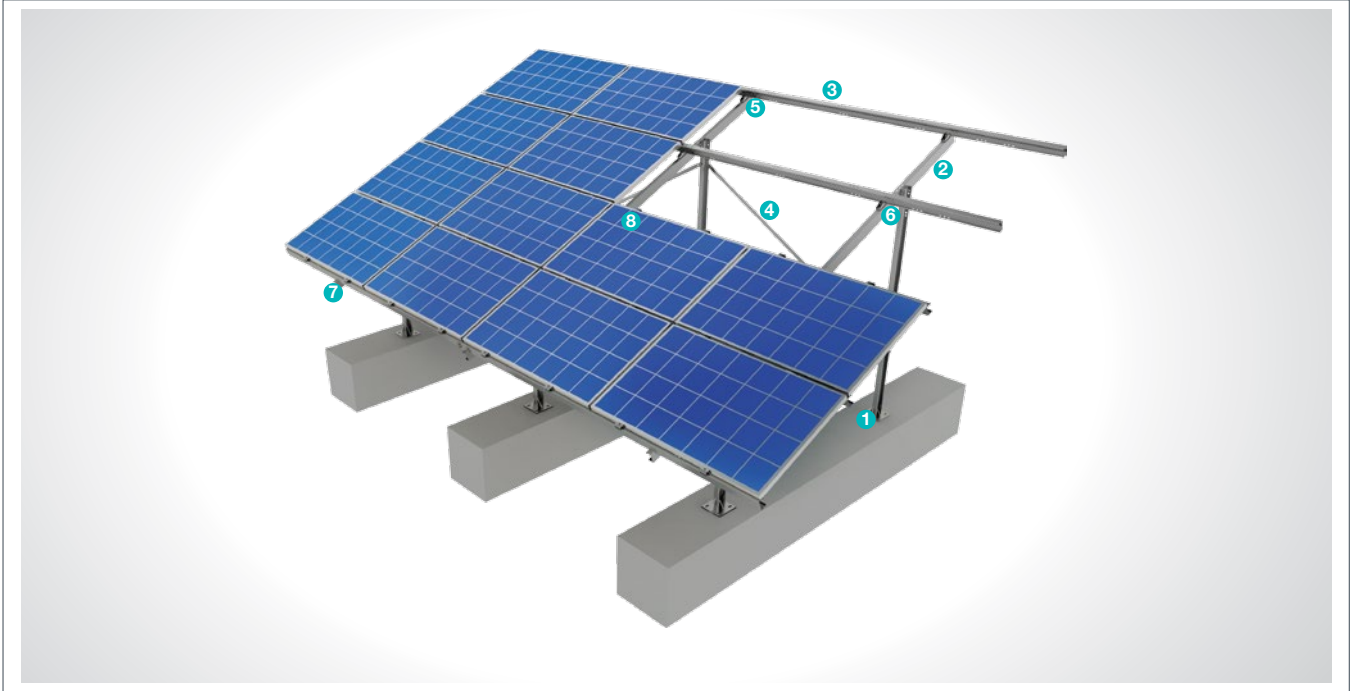
## Technical Specifications

Description:	(KPT5) Concrete Base Anchored Steel Mounting System with 2 Vertical Panels
Mounting Method:	Anchor on Concrete Base
Tilt Angle:	0-60 degrees
Module Application:	Framed and Unframed
Panel Height From Ground:	60 cm
Column and Beam Coating:	EN ISO 1461
Column and Beam Material:	EN 10025 / EN 10029
Optional Beam Material:	EN 10346
Panel Retainer:	EN AW 6063
Connector Equipment:	DIN 934 / DIN933 / DIN 912, A2-70 DIN 50979

## (KPT6) Concrete Base Anchored Steel Mounting System with 4 Horizontal Panels

### Overview

KPT6, is a concrete base anchored steel support and mounting system with 4 horizontal panels for open terrain solar panels. The system is an ideal application solution for PV projects installations on sloped medium and large sized terrains. It provides the necessary strength and stability for application in loose ground. After manufacturing the system components with high-technology machines and equipment, an excellent corrosion resistance is then achieved through hot-dip galvanized coating. The system, incorporating a high-level engineering design, provides assembly and cost advantages.



#### STEEL COLUMN

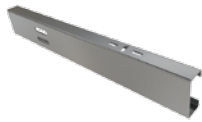
1



■ **CK-90 / CK-100 / CK-120**  
M12X30 Knurled Bolt  
M12 Flanged Nut  
M12 Washer

#### STEEL BEAM

2



■ **CR-100 / CR-120**  
M12X30 Knurled Bolt  
M12 Flanged Nut  
M8X30 Knurled Bolt  
M8 Flanged Nut  
M8/M12 Washer

#### STEEL PURLIN

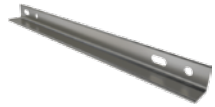
3



■ **CA-90 / CA-100 / CA-110**  
M12X30 Knurled Bolt  
M12 Flanged Nut  
M8X30 Knurled Bolt  
M8 Flanged Nut  
M8/M12 Washer

#### STEEL L BRACKET

4



■ **CL-40X40 / CL-50X50**  
M12X30 Knurled Bolt  
M12 Flanged Nut  
M12 Washer

#### PURLIN CONNECTOR JOINING PIECE

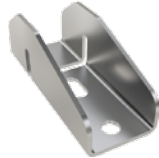
5



■ **C-90 / C-100 / C-110**  
M12X30 Knurled Bolt  
M12 Flanged Nut  
M12 Washer

#### PURLIN CONNECTOR PIECE

6



■ **U40**  
M8X30 Knurled Bolt  
M8 Flanged Nut  
M8 Washer

#### PANEL SIDE RETAINER

7



■ **H30-H32-H40**  
M8X30 Hex Bolt  
M8 Flanged Nut

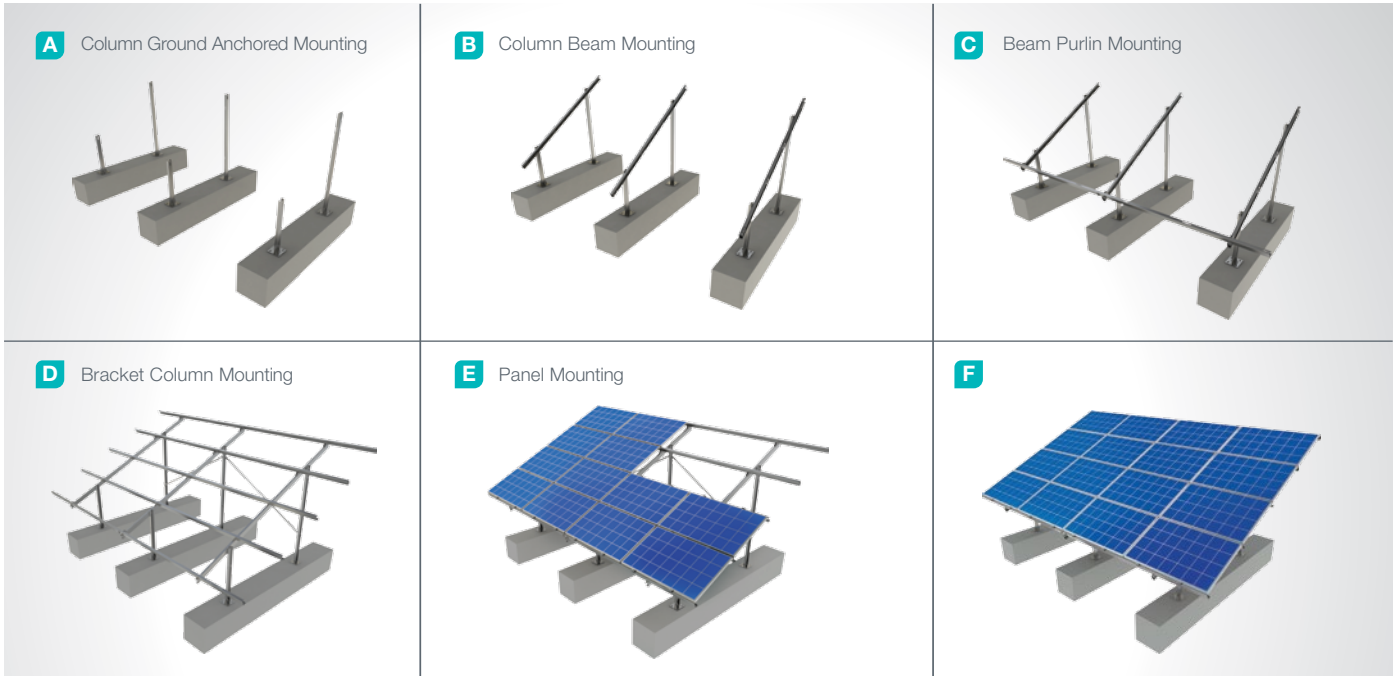
#### PANEL CENTER RETAINER

8



■ **L70**  
M8X30 Hex Bolt  
M8 Flanged Nut

## Installation Phase



## Advantages

- Time saving for installation
- Cost saving for installation
- Flexible solutions for different types of terrains
- Suitable for loose ground
- Suitable for slopped terrains
- Tailored design solutions for customer
- Customer oriented engineering solutions

## Technical Specifications

Description:	(KPT6) Concrete Base Anchored Steel Mounting System with 4 Horizontal Panels
Mounting Method:	Anchor on Concrete Base
Tilt Angle:	0-60 degrees
Module Application:	Framed and Unframed
Panel Height From Ground:	60 cm
Column and Beam Coating:	EN ISO 1461
Column and Beam Material:	EN 10025 / EN 10029
Optional Beam Material:	EN 10346
Panel Retainer:	EN AW 6063
Connector Equipment:	DIN 934 / DIN933 / DIN 912, A2-70 DIN 50979