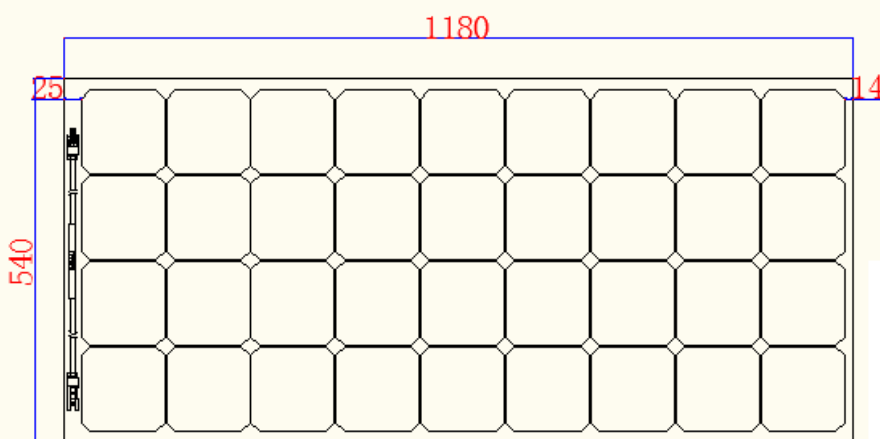


Professional And Reliable Solar Panel Manufacturer

Characteristics

Maximum power(Pm)	120W
Power Tolerance	±3%
Voltage at max power(Vmp)	20.5V
Current at max power(Imp)	5.85A
Open circuit voltage(Voc)	24.6V
Short circuit current(Isc)	6.43A
Operating Temperature	- 40℃ — +85℃
Maximum System Voltage	700V
Maximum Series Fuse Rating	15A

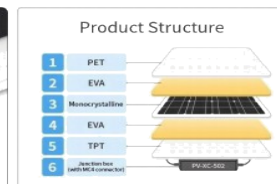
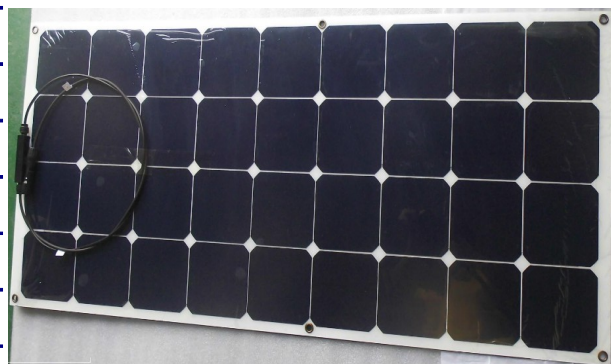
Drawing



Standard Test Condition Irradiance 1000W/m², Module temperature 25℃, AM=1.5

Mechanical Characteristics

Solar cell: SunPower Cell (125x 125mm)
No. of cells and connections: 36=4x9pcs
Dimension of module: 1185*540*2.5mm
Junction Box/Connector: Ip65 rated with MC4
Materials: PET/ETFE+2EVA+SOLAR CELL+3EVA+PET
Cables: Photovoltaic Technology cable (2.5mm ² *0.9m)
Weight: 2.25KG
Packing Configuration: 10pcs/ctn, 100pcs/wooden case
Solar cell efficiency: ≥22%
Resistances : 800g stell ball fall down from 1m height and 60m/s wind



Temperature Characteristics

Noct: 46℃ ± 2℃
Current temperature coefficient: 0.05%/℃
Voltage temperature coefficient: - 0.35%/℃
Power temperature coefficient: - 0.45%/℃

深圳市圣菲尔德新能源科技有限公司
Shenzhen Sunfield New Energy Technology Co.,Ltd
Add: 3rd floor, 5th building, Tenghongxing Industrial Park, FengXin Road, Guangming District, Shenzhen, China.
Tel: +86-0755-23243140
Fax: +86-0755-23243140
www.sunfield-solar.com
Jacksonfu@sunfield-solar.com