



Xiamen LARGE Energy Tech Co., Ltd

Sale add: No.18 Xinglong Road Huli District Xiamen China
Factory add: No.15 Xingmei Road Jimei District Xiamen China
Tel: +86 592-5663877 Fax: +86 592-5663511
Zip: 361006
Email: info@largenergy.com Web: www.largenergy.com
WhatsApp: +86 18950038692

Solar Roof Mounting System

- Solar Tile Roof Mounting System
- Solar Metal Roof Mounting System
- Solar Triangle Roof Mounting System
- Solar Adjustable Flat Roof Mounting System
- Solar Ballasted Flat Roof Mounting System



LARGE ENERGY LARGE ENERGY LARGE ENERGY LARGE ENERGY

The LARGE ENERGY

The LARGE Pitched Roof System is engineered for the maximum flexibility possible in designing and planning for the commercial and residential roof solar system. It is applicable to install the usual framed module, The special extruded aluminum rail, D-nut module, clamp kit and the various roof hooks can be high pre-assembly and make the installation easy and quick to save your labor cost and time. The customized length can eliminate the weld and cut onsite to keep the high anticorrosive performance, the structure strength and the appearance.

Advantages

Materials

LARGE Energy roof mounting rails adopt Aluminum 6005-T5, with surface anodized treatment; the anodized thickness applied complies with National Standard GB5237-2008; product to be anti-corrosive, anti-rust. every bolt, nut and L-Feet Kit; anti-corrosive and anti-rust.

International Standard

LARGE Energy mounting kits comply with international standard AS/NZS 1170.2 ,SGS,and ISO9001 keeping up with the leading technology.

Easy & Efficient Installation

components can be freely combined; Aluminum alloy rails and unique "D" design module are applicable to all kinds of pitch roof of any building, such as metal, corrugated surface. A single wrench is enough for the installation procedures. With different parts connected properly to suit various sites installation. With high precision, rail length accurate to millimeter, thus will not need any second cut due to rail too long or too short, resulting unnecessary waste. Choose LARGE Energy mounting kits, Choose higher efficiency and lower cost.

Environment-friendly

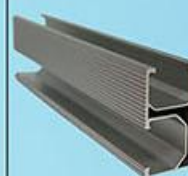
LARGE Energy raw materials adopted are recyclable and guaranteed with at least 12 years of quality warranty.



Feature

Installation site:	Pitched Roof
Wind load:	Upto 60M/S
Snow load:	Upto 1.5KN/M2
Angle:	Upto 60 degree
Applicable module:	Framed or Filmed
Module Orientation:	Landscape and Portrait
Module Dimension:	Applicable to any dimension
Standard compliance:	AS/NZS1170.2 ; SGS and other international standard
Quality warranty:	12 years for all components.
Color:	Natural or customized.

Key Components



Rail

Material: Anodized Al6005-T5

Part No.	Description	Package
LA-RR-02	L=2560mm	4PCS/pack
LA-RR-02	L=3405mm	4PCS/pack
LA-RR-02	L=4200mm	4PCS/pack



Mid Clamp

Material: Anodized Al6005-T5

Part No.	Description	Package
LA-MC01-35	Mid Clamp 35mm	100sets/pack
LA-MC01-40	Mid Clamp 40mm	100sets/pack
LA-MC01-45	Mid Clamp 45mm	100sets/pack
LA-MC01-50	Mid Clamp 50mm	100sets/pack



End Clamp

Material: Anodized Al6005-T5

Part No.	Description	Package
LA-EC-35	End Clamp 35mm	100sets/pack
LA-EC-40	End Clamp 40mm	100sets/pack
LA-EC-45	End Clamp 45mm	100sets/pack
LA-EC-50	End Clamp 50mm	100sets/pack

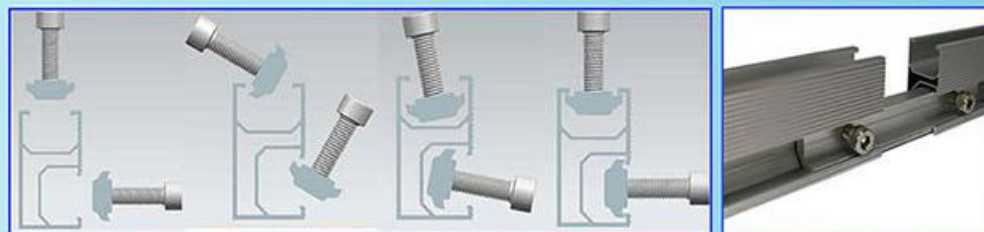


Rail Splice Kit

Material: Anodized Al6005-T5

Part No.	Description	Package
LA-RS-01	Rail Connection	72sets/pack

Installation Instruction



www.largenergy.com

Key Components



Rail Grounding Kit Material: Anodized Al6005-T5

Part No.	Description	Package
LA-EGK	Rail Grounding Kit	200sets/pack



Grounding Clamps Material: Stainless Steel 304

Part No.	Description	Package
LA-MGL-01	Grounding Lug	1200pcs/pack
LA-EGC-01	Grounding Clip	1200pcs/pack



Cable Clamps Material: Stainless Steel 304

Part No.	Description	Package
LA-CBJ	Bonding Jumper	200sets/pack
LA-CC-01	Cable Clip	250sets/pack



Tile Roof Hook 1# Material: Stainless Steel 304

Part No.	Description	Package
LA-TRH-01	Tile Roof Hook	8sets/pack



Tile Roof Hook 2# Material: Anodized Al6005-T5

Part No.	Description	Package
LA-TRH-02	Tile Roof Hook	8sets/pack



Tile Roof Hook 3# Material: Stainless Steel 304 & Anodized AL6005-T5

Part No.	Description	Package
LA-TRH-03	Hanger Bolt Hook(M10*200mm)	30sets/pack



Tile Roof Hook 4# Material: Stainless Steel 304 & Anodized AL6005-T5

Part No.	Description	Package
LA-TRH-04	Hanger Bolt Hook(M10*200mm)	30sets/pack



Metal Roof Hook 1# Material: Anodized AL6005-T5

Part No.	Description	Package
LA-MRH-01	Metal Roof Hook	40sets/pack



Metal Roof Hook 2# Material: Stainless Steel 304

Part No.	Description	Package
LA-MRH-02A	Metal Roof Hook	20sets/pack
LA-MRH-02B	Metal Roof Hook	20sets/pack



Metal Roof Hook 3# Material: Anodized AL6005-T5

Part No.	Description	Package
LA-MRH-03	Metal Roof Hook	40sets/pack



Metal Roof Hook 4# Material: Anodized AL6005-T5

Part No.	Description	Package
LA-MRH-04	Metal Roof Hook	40sets/pack



Metal Roof Hook 5# Material: Anodized AL6005-T5

Part No.	Description	Package
LA-MRH-05	Metal Roof Hook	20sets/pack



Thin Film Clamp Material: Anodized AL6005-T5

Part No.	Description	Package
LA-TFMC	Thin Film Mid Clamp	60sets/pack
LA-TFEC	Thin Film Mid Clamp	60sets/pack



The LARGE ENERGY

The LARGE Triangle Flat Roof has been developed as a universal PV modules mounting system for flat top or ground installations. The angle can be adjusted by 10-15° ;15-30°,30-60° The innovative aluminum base rails, the special modules, Triangle kit, and the high degree of pre-assembly eliminate the need for onsite cutting welding and enables quick and easy field PV module installations.

Advantages

1. Materials: LARGE mounting rails adopt Aluminum AL6005-T5 with surface Anodized treatment. The anodized thickness applied complies with National Standard GB5237-2008: to be anti-corrosive
2. Easy & Efficient Installation: Components can be freely combined; Aluminum alloy rails and unique design "D" Module are Easy to installation together.
3. International Standard: LARGE Triangle mounting system complies with international standard AS/NZS1170.2 and SGS testing to keeping up with the leading technology.
4. Environment- friendly: All the LARGE raw materials adopted are recyclable and guaranteed with at least 12 years of quality warranty and 20 years service life.

Feature

Installation site:	Flat Roof and Open Ground
Wind load:	Upto 60M/S
Snow load:	Upto 1.5KN/M2
Installation Angle:	10-15,15-30 or 30-60 degree
Applicable module:	Framed and frameless
Module Orientation:	Landscape and portrait
Module Dimension:	Applicable to any dimension
Standard compliance:	AS/NZS1170.2 ;SGS and other international standard
Quality warranty:	12 years for all components.
Color:	Natural or customized.

Key Components



Fixed 30 Degree	Material: Anodized Al6005-T5	
Part No.	Description	Package
LA-FTK30	Triangle Fixed 30 degree or customized Angle	Pack as per request



10/15 Degree	Material: Anodized Al6005-T5	
Part No.	Description	Package
LA-ATK10/15	Adjustable Triangle Kit 10 degree to 15 degree	Pack as per request

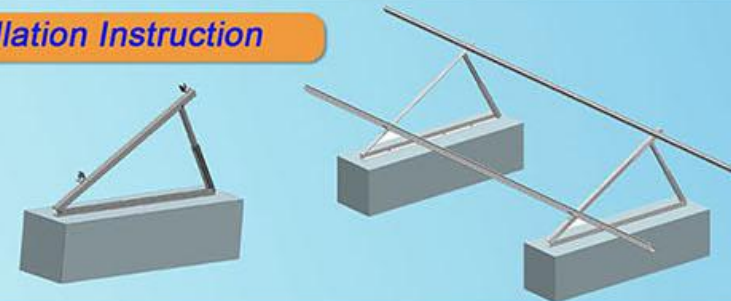


15/30 Degree	Material: Anodized Al6005-T5	
Part No.	Description	Package
LA-ATK15/30	Adjustable Triangle Kit 15 degree to 30 degree	Pack as per request



30/60 Degree	Material: Anodized Al6005-T5	
Part No.	Description	Package
LA-ATK30/60	Adjustable Triangle Kit 30 degree to 60 degree	Pack as per request

Installation Instruction





The LARGE ENERGY

The LARGE Adjustable Roof System is engineered for the maximum flexibility possible in designing and planning for the commercial and residential roof solar system. It is applicable to install the usual framed module, The solar system can be a fixed angle or adjustable such as 10~15 degree, 15~30 degree, 30~60 degree and The special extruded aluminum rail, special module, clamp kit and the Adjustable Front/Rear Leg Kits can be high pre-assembly and make the installation easy and quick to save your labor cost and time. The customized length can eliminate the weld and cut onsite to keep the high anticorrosive performance, the structure strength and the appearance.

Advantages

1. Materials: LARGE mounting rails adopt Aluminum 6005-T5, with surface Anodized treatment. The anodized thickness applied complies with National Standard GB5237-2008: to be anti-corrosive
2. Easy & Efficient Installation: Components can be freely combined; Aluminum alloy rails and unique design "D" Module are Easy to installation together.
3. International Standard: LARGE Adjustable roof mounting system complies with international standard AS/NZS1170.2, SGS testing to keeping up with the leading technology.
4. Environment- friendly: All the LARGE raw materials adopted are recyclable and guaranteed with at least 12 years of quality warranty and 20 years service life.

Feature

Installation site:	Metal Roof or Flat Roof
Wind load:	Upto 60M/S
Snow load:	Upto 1.5KN/M2
Installation Angle:	10~60 degree
Applicable module:	Framed and frameless
Module Orientation:	Landscape and Portrait
Module Dimension:	Applicable to any dimension
Standard compliance:	AS/NZS1170.2 ; SGS and other international standard
Quality warranty:	12 years for all components.
Color:	Natural or customized.

Key Components



Front Leg

Part No.
LA-ARFL

Material: Anodized Al6005-T5

Description
Fix Front leg on flat roof or metal roof

Package
15sets/pack



Back Leg 10/15

Part No.
LA-ARBL10/15

Material: Anodized Al6005-T5

Description
Adjustable Roof Back leg from 10 to 15 degree

Package
pack as request



Back Leg 15/30

Part No.
LA-ARBL15/30

Material: Anodized Al6005-T5

Description
Adjustable Roof Back leg from 15 to 30 degree

Package
pack as request



Back Leg 30/60

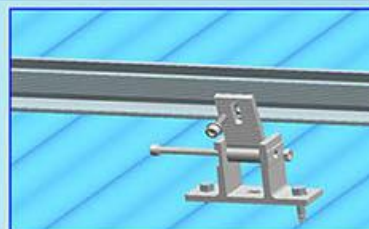
Part No.
LA-ARBL 30/60

Material: Anodized Al6005-T5

Description
Adjustable Roof Back leg from 30 to 60 degree

Package
pack as request

Installation Instruction





The LARGE ENERGY

The LARGE Ballasted Roof System is engineered for the maximum flexibility possible in designing and planning for the flat roof solar system. It is applicable to install the usual framed module. The solar system can be fixed for any angle. The special extruded aluminum rail, special D module nut, clamp kit, foot base, support tube/ back leg can be high pre-assembly and make the installation easy and quick to save your labor cost and time. The customized length can eliminate the weld and cut onsite to keep the high anticorrosive performance, the structure strength and the appearance.

Advantages

1. Materials: LARGE mounting rails adopt Aluminum 6005-T5, with surface Anodized treatment. The anodized thickness applied complies with National Standard GB5237-2008: to be anti-corrosive
2. Easy & Efficient Installation: Components can be freely combined; Aluminum alloy rails and unique design "D" Module are Easy to installation together.
3. International Standard: LARGE Ballasted roof mounting system complies with international standard AS/NZS1170.2, SGS testing to keeping up with the leading technology.
4. Environment- friendly: All the LARGE raw materials adopted are recyclable and guaranteed with at least 12 years of quality warranty and 20 years service life.

Feature

Installation site:	Flat Roof
Wind load:	Upto 60M/S
Snow load:	Upto 1.5KN/M2
Installation Angle:	10~60 degree
Applicable module:	Framed and frameless
Module Orientation:	Landscape and Portrait
Module Dimension:	Applicable to any dimension
Standard compliance:	AS/NZS1170.2 ; SGS and other international standard
Quality warranty:	12 years for all components.
Color:	Natural or customized.

Key Components



Foot Base

Part No.
LA-BFB

Material: Anodized Al6005-T5
Description
Fix foot base on flat roof
Package
pack as request



Back Leg

Part No.
LA-BBL

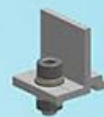
Material: Anodized Al6005-T5
Description
Fix back leg on the foot base
Package
pack as request



Support Tube

Part No.
LA-BST

Material: Anodized Al6005-T5
Description
Connect the foot base and back leg with support tube
Package
pack as request



Rail Clamp

Part No.
LA-BRC

Material: Anodized Al6005-T5
Description
Fix the rail on the support tube
Package
pack as request

Installation Instruction

