

## Energy storage / power products and system solutions



Quality  
Products,  
Full Service

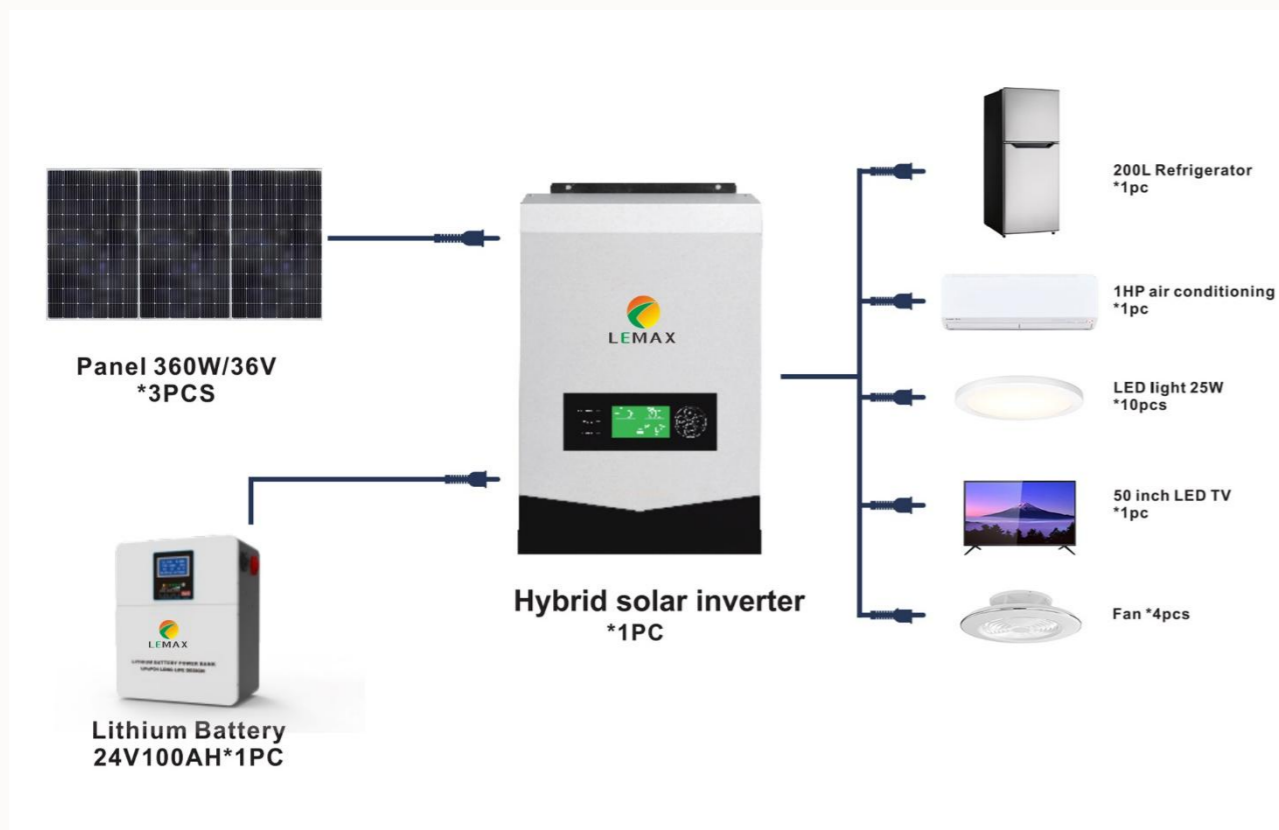
# COMPANY PROFILE

LEMAX is a leading high-tech enterprise of new energy industry in China. The company follows the development concept of "independent innovation, service first", has advanced core technology, a strong R & D team, perfect products and services, is a collection Production, research and development, sales, construction, operation and maintenance as one of the overall solution of new energy industry Solution provider. Main application areas:

- 1.Home energy storage system products and solutions
- 2.Photovoltaic energy storage system products and solutions
- 3.Lithium electric lead acid replacement products and solutions
- 4.AGV, engineering machine products and solutions
- 5.high voltage energy storage system products and solutions

Relying on profound industry experience, strong financial strength, strong r & D capability and product operation and maintenance service system, LEMAX continues to create value for customers in the field of energy storage and power system.

At present, the business has spread to more than 30 countries and regions around the world.



## Energy storage system solutions



Quality  
Products,  
Full Service

# Home Energy Storage Series



Wall Mounted/Standing  
Energy Storage Battery



### Product Feature

- | Compatible with mutiple top brands inverter;
- | Wall-mounted design specially for home energy storage;
- | Support communication protocol RS232 RS485,CAN;
- | Parallel allowed to increase capacity;
- | Easy installation and simply connection to inverter;
- | LEMAX battery adopts LiFePO4 chemistry to ensure safety performance;

Model	LMW-48100	LMW-48200
Nominal Voltage A/ Nominal Capacity /Ah (25° C , 0.2C)	51.2 100	51.2 200
Weight (approximate)ZKg	57	101.0
Dimension L*W*H /mm	625*455*168	837*563*168
Terminal	M8	M8
Voltage windowA/ Float charge voltageA/	44.8 to 58.4 55.2	44.8 to 58.4 55.2
Max. continue discharge current/A	100	100
Max. pulse discharge current/A	150A 1Sec.	150A 1Sec.
Max. continue charge current/A	50	100
Cycle life (+25°C 0.2C 100%DOD)	> 6000 Cycles	> 6000 Cycles
Operating temperature	Discharge -10°C to 50°C Charge 0°C to 50°C	Discharge -10°C to 50°C Charge 0°C to 50°C
Storage temperature	0to 30°C	0to 30°C
Storage duration	6 months at 25°C	6 months at 25°C
Safety standard	UN38.3,MSDS,CE	UN38.3,MSDS,CE
IP Degree	IP20	IP20

### Application Scenarios



# Home Energy Storage Series



Power Wall  
Energy storage battery

## Product Feature

- | Wall Mounted
- | Lead acid batteries can be replaced directly
- | Small volume and large capacity, no memory effect
- | Long cycle life
- | Easy to use, beautiful
- | Over charge, over discharge, over equipment and other intelligent protection

Model	LMW-48100	LMW-48120
Nominal Voltage V	51.2	51.2
Rated Capacity AH	100	120
Voltage Range V	40-58.4	40-58.4
DOD	75%/5000cyc	75%/5000cyc
Electric Machinery A	100	100
Rechargeable Electric Machinery A	50	50
Communication Mode	232/RS485/CAN	232/RS485/CAN
Type of Cooling	self cooling	self cooling
Relatively Great Degree	20%-95%RH	20%-95%RH
Level Of Protection	IP20	IP20
Job stick	-20°C-55°C	-20°C-55°C
Size mm	795*420*155	795*420*155
Weight KG	55	60

## Application Scenarios



# Home Energy Storage Series

Household use  
Energy storage battery



## Product Feature

- | Wall Mounted
- | Lead acid batteries can be replaced directly
- | Small volume and large capacity, no memory effect
- | Long cycle life
- | Easy to use, beautiful
- | Over charge, over discharge, over equipment and other intelligent protection

Model	LM-JVS-48100	LM-JVS-48120
Nominal Voltage V	51.2	51.2
Rated Capacity AH	100	120
Voltage Range V	40-58.4	40-58.4
DOD	75%/5000cyc	75%/5000cyc
Electric Machinery A	100	100
Rechargeable Electric Machinery A	50	50
Communication Mode	232/RS485/CAN	232/RS485/CAN
Type of Cooling	self cooling	self cooling
Relatively Great Degree	20%-95%RH	20%-95%RH
Level of Protection	IP20	IP20
Job stick	-10°C-55°C	-20°C-55°C
Size mm	550*185*440	550*185*440
Weight KG	55	60

## Application Scenarios



# Home Energy Storage Series

Household use  
Energy storage battery



## Product Feature

- | Wall Mounted
- | Lead acid batteries can be replaced directly
- | Small volume and large capacity, no memory effect
- | Long cycle life
- | Easy to use, beautiful
- | Over charge, over discharge, over equipment and other intelligent protection

Model	LM-JS-48100	LM-JS-48120
Nominal Voltage V	51.2	51.2
Rated Capacity AH	100	120
Voltage Range V	40-58.4	40-58.4
DOD	75%/5000cyc	75%/5000cyc
Electric Machinery A	100	100
Rechargeable Electric Machinery A	50	50
Communication Mode	232/RS485/CAN	232/RS485/CAN
Type of Cooling	self cooling	self cooling
Relatively Great Degree	20%-95%RH	20%-95%RH
Level of Protection	IP20	IP20
Job stick	-20°C-55°C	-20°C-55°C
Size mm	710*450*192	710*450*192
Weight KG	55	60

## Application Scenarios



# Home Energy Storage Series

Energy storage battery



## Product Feature

- | Wall Mounted
- | Lead acid batteries can be replaced directly
- | Small volume and large capacity, no memory effect
- | Long cycle life
- | Easy to use, beautiful
- | Over charge, over discharge, over equipment and other intelligent protection

Model	LM-JC-4880	LM-JC-48100	LM-JC-48120
Nominal Voltage V	51.2	51.2	51.2
Rated Capacity AH	80	100	120
Voltage Range V	40-58.4	40-58.4	40-58.4
DOD	75%/5000cyc	75%/5000cyc	75%/5000cyc
Electric Machinery A	100	100	100
Rechargeable Electric Machinery A		50	50
Communication Mode	232/RS485/CAN	232/RS485/CAN	232/RS485/CAN
Type of Cooling	self cooling	self cooling	self cooling
Relatively Great Degree	20%-95%RH	20%-95%RH	20%-95%RH
Level of Protection	IP20	IP20	IP20
Job stick	-20°C-55°C	-20°C-55°C	-20°C-55°C
Size mm	482*431*132	482*431*223	482*431*223
Weight KG	40	55	60

## Application Scenarios





# Home Energy Storage Series

Power/energy storage battery



## Product Feature

- | Wall Mounted
- | Lead acid batteries can be replaced directly
- | Small volume and large capacity, no memory effect
- | Long cycle life
- | Easy to use, beautiful
- | Over charge, over discharge, over equipment and other intelligent protection



Model	LM-LFP-12100	LM-LFP-12200	LM-LFP-12300
Nominal Voltage V	12.8	12.8	12.8
Rated Capacity AH	100	200	300
Voltage Range V	10-14.6	10-14.6	10-14.6
DOD	75%/5000cyc	75%/5000cyc	75%/5000cyc
Electric Machinery A	100	100	100
Rechargeable Electric Machinery A	50	50	50
Series-parallel/Blue Tooth	both	both	both
Type of Cooling	self cooling	self cooling	self cooling
Relatively Great Degree	20%-95%RH	20%-95%RH	20%-95%RH
Level of Protection	IP67	IP67	IP67
Job stick	-20°C-55°C	-20°C-55°C	-20°C-55°C
Size mm	330*173*217	483*170*240	522*240*218
Weight KG	10	20	30

## Application Scenarios



## Power products and system solutions



Quality  
Products,  
Full Service



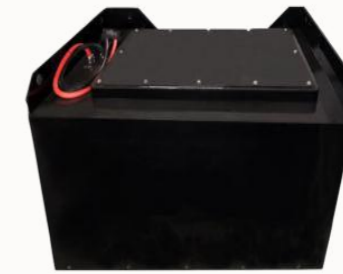
# The Power Series

Forklift lithium battery



## Product Feature

- I Wall Mounted
- I Lead acid batteries can be replaced directly
- I Small volume and large capacity, no memory effect
- I Long cycle life
- I Easy to use, beautiful
- I Over charge, over discharge, over equipment and other intelligent protection



Model	LM-PW-24300	LM-PW-48300	LM-PW-72300
Nominal Voltage V	25.6	51.2	73.6
Rated Capacity AH	300	300	300
Voltage Range V	20-29.2	40-58.4	57.3-94
DOD	75%/5000cyc	75%/5000cyc	75%/5000cyc
Electric Machinery A	150	200	200
Rechargeable Electric Machinery A	100	100	100
Communication Mode	232/RS485/CAN	232/RS485/CAN	232/RS485/CAN
Type of Cooling	self cooling	self cooling	self cooling
Relatively Great Degree	20%-95%RH	20%-95%RH	20%-95%RH
Level of Protection	IP20	IP20	IP20
Job stick	-20°C-55°C	-20°C-55°C	-20°C-55°C
Size mm	定制	定制	定制
Weight KG	定制	定制	定制

## Application Scenarios



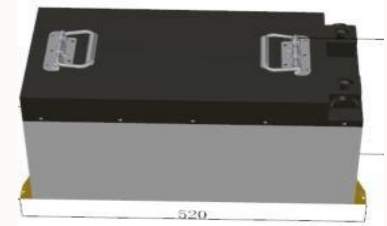
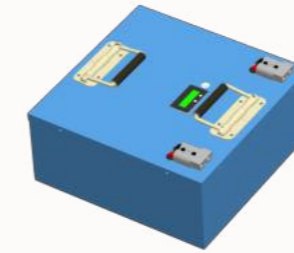
# The Power Series

Power battery pack



## Product Feature

- | Wall Mounted
- | Lead acid batteries can be replaced directly
- | Small volume and large capacity, no memory effect
- | Long cycle life
- | Easy to use, beautiful
- | Over charge, over discharge, over equipment and other intelligent protection



Model(Customized)	LM-PW-48100	LM-PW-60100	LM-PW-72200
Nominal Voltage V	51.2	64	73.6
Rated Capacity AH	100	100	200
Voltage Range V	20-29.2	40-58.4	57.3-94
DOD	75%/5000cyc	75%/5000cyc	75%/5000cyc
Electric Machinery A	100	100	100
Rechargeable Electric Machinery A	50	50	50
Blue Tooth	Blue Tooth	Blue Tooth	Blue Tooth
Type of Cooling	self cooling	self cooling	self cooling
Relatively Great Degree	20%-95%RH	20%-95%RH	20%-95%RH
Level of Protection	IP20	IP20	IP20
Job stick	-20°C-55°C	-20°C-55°C	-20°C-55°C
Size mm	Customized	Customized	Customized
Weight KG	Customized	Customized	Customized

## Application Scenarios



Economic Energy Storage System Solution



Quality  
Products,  
Full Service

# Economic Series - Wall mounted energy storage

Energy storage battery



## Product Feature

- | Wall Mounted
- | Lead acid batteries can be replaced directly
- | Small volume and large capacity, no memory effect
- | Long cycle life
- | Easy to use, beautiful
- | Over charge, over discharge, over equipment and other intelligent protection

MODEL	24V/100AH	24V/200AH	48V/200AH	48V/200AH
Battery Type	LiFePO4			
Normal Battery Voltage(Vdc)	25.6V	25.6V	51.2V	51.2V
Normal Capacity (25°C 0.2C) (WH)	2560WH	5120WH	10240WH	10240WH
Voltage window (Vdc)	22.4~29.2V	22.4~29.2V	44.8~58.4V	44.8~58.4V
Float Charge Voltage(Vdc)	27.6V	27.6V	55.2V	55.2V
Max Continuous Discharge Current(A)	100	150	150	150
Max Pulse Discharge Current(A)	200A 30Sec.	200A 30Sec.	200A 30Sec.	200A 30Sec.
Max Continuous Charge Current(A)	50	100	100	100
Case design	Powerwall design	Powerwall design	Powerwall design	Tower wall design
Cycle life(+25°C 0.2C 80%DOD)	> 3000 Cycles (Optional for >5000 Cycles with 5 years warranty)			
Cell Equalizer Current(A)	1~5A Max.			
Terminal	M8			
Storage temperature	0°C~30°C			
Storage duration	6 months at 25°C			
Safety standard	UN38.3,IEC62619,MSDS,CE			
IP degree	IP 20			
	PROTECTION			
Protection	Overcharge protection、Overdischarge protection、Overcurrent protection、Shortcircuit protection、Overtemperature protection			
	Ambient			
Noise(dB)	< 40dB (1 meter)			
working Temperature	-10°C~+50°C			
Humidity	0~95% ( no condensation)			
Sea Level(m)	=1500			
	DIMENSION			
L×W×H (products size) mm	L314*W218*H380	L534*W385*H218	L652*W521*H218	L485*W298*H802
L×W×H (package size) mm	L395*W250*H442	L611*W442*H250	L722*W591*H280	L545*W375*H854
Weight(NW Kg)	25.0Kg	44.0Kg	73.0Kg	132.0Kg
Weight(GW Kg)	26.0Kg	45.0Kg	74.0Kg	152.0Kg

## Application Scenarios



# Economic Series - Horizontal energy storage

Energy storage battery



## Product Feature

- I Wall Mounted
- I Lead acid batteries can be replaced directly
- I Small volume and large capacity, no memory effect
- I Long cycle life
- I Easy to use, beautiful
- I Over charge, over discharge, over equipment and other intelligent protection

MODEL	LMS 12V/100Ah	LMS 12V/200Ah	LMS 24V/100Ah	LMS 24V/200Ah	LMS 48V/100Ah	LMS 48V/200Ah
Battery Type	LiFePO4					
Normal Battery Voltage(Vdc)	12.8V	12.8V	25.6V	25.6V	51.2V	51.2V
Normal Capacity (25°C 0.2C) (WH)	1280WH	2560WH	2560WH	5120WH	5120WH	10240WH
Voltage window (Vdc)	11.2 to 14.6V	11.2 to 14.6V	22.4 to 29.2V	22.4 to 29.2V	44.8 to 58.4V	44.8 to 58.4V
Float Charge Voltage(Vdc)	13.8	13.8	27.6	27.6	55.2	55.2
Max Continuous Discharge Current(A)	100	100	100	150	100	150
Max Pulse Discharge Current(A)	150A 1Sec.	150A 1Sec.	150A 30Sec.	200A 30Sec.	150A 1Sec.	200A 30Sec.
Max Continuous Charge Current(A)	50	100	50	100	50	100
Cycle life(+25°C 0.2C 80%DOD)	> 1500 Cycles					
Cell Equalizer Current(A)	1~5A Max.					
Terminal	M8					
Storage temperature	0°C~30°C					
Storage duration	6 months at 25°C					
Safety standard	UN38.3,IEC62619,CE					
IP degree	IP 20					
Protection	Overcharge protection、Overdischarge protection、Overcurrent protection、Shortcircuit protection、Overtemperature protection					
Noise(dB)	Ambient					
working Temperature	< 40dB (1 meter)					
Humidity	-10°C~+50°C					
Sea Level(m)	0~95% ( no condensation)					
	=1500					
	DIMENSION					
Weight (approximate)/Kg	12.50Kg	31.00Kg	31.00Kg	61.00Kg	42.00kg	132.00kg
Dimension L*W*H /mm	L251*W185*H196	L547*W202*H220	L547*W202*H220	L561*W322*H291	L510*W358*H171	L778*W453*H363

## Application Scenarios



# Part Of Lemax products





# Some high voltage system cases



## 220V400AH

Application: commercial energy storage, industrial energy storage, high voltage equipment, etc



## 250V300AH

Application: commercial energy storage, industrial energy storage, high voltage equipment, etc



## 192V80AH

Application: household energy storage, commercial energy storage, etc



## 512V400AH

Application: commercial energy storage, industrial energy storage, high voltage equipment, etc

## 96V200AH

Application: commercial energy storage, high voltage equipment, emergency repair, etc



## 410V40AH

Application: automotive power supply, high voltage equipment, emergency repair, etc



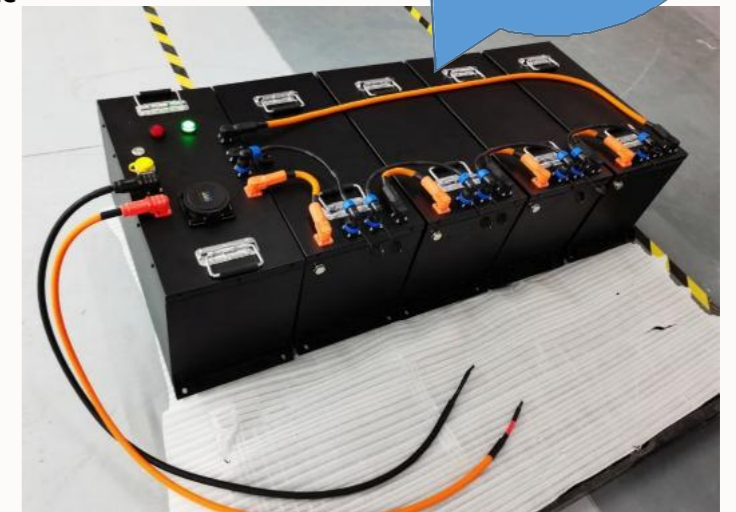
## 128V240AH

Application: commercial energy storage, industrial energy storage, high voltage equipment, etc



## 576V40AH

Applications: automobile, rail car, commercial energy storage, high voltage equipment, etc



# Part Of Plant Equipment



27000 The aging tank



8000W The aging tank



2000W+3000W laser-beam welding machine



laser-beam welding machine

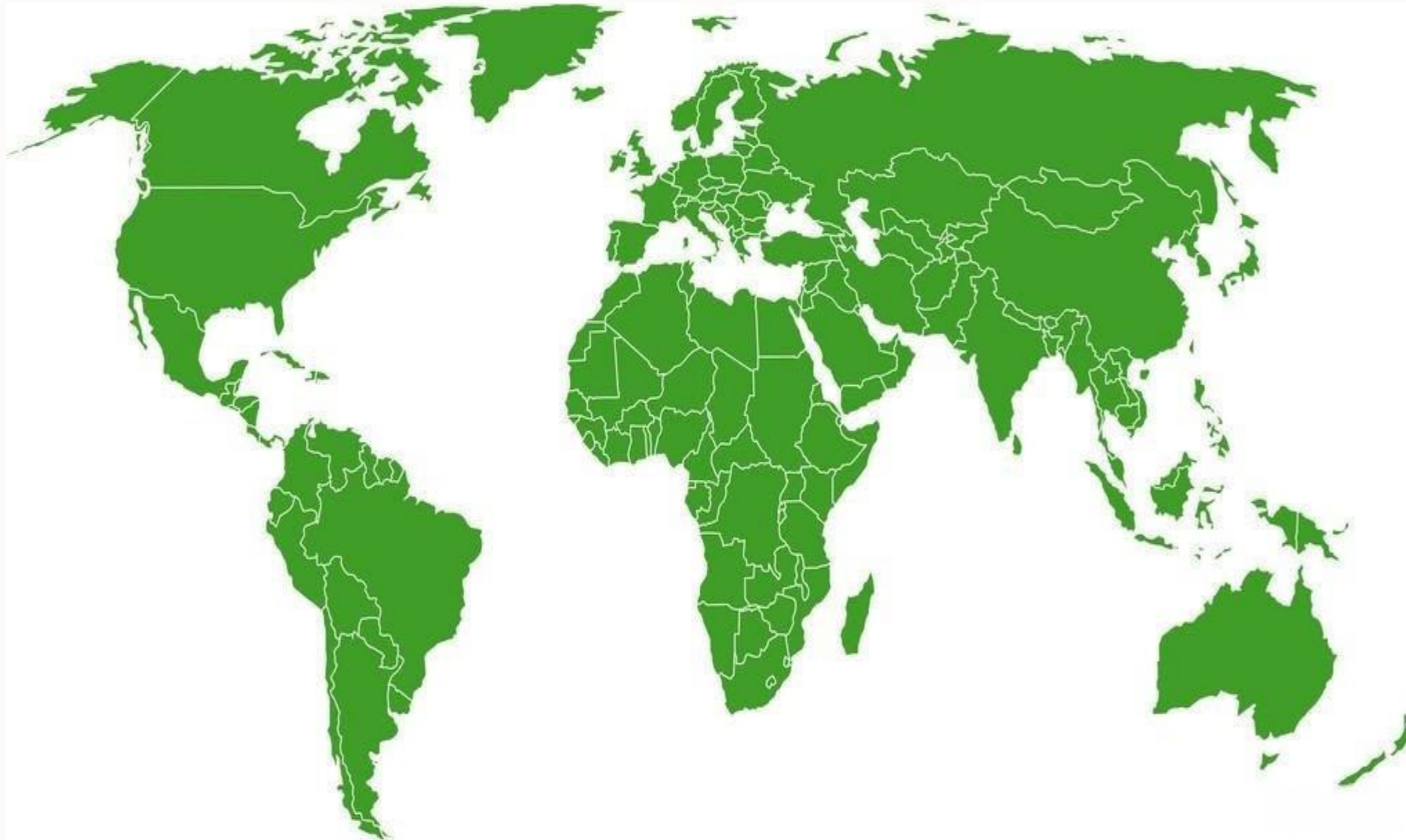


laser-beam welding machine



1500W Automatic spot welding machine

# Professional Services



## pre-sale service

- ① Free technical consulting services for customers.
- ② Provide product samples, company profile, credit certificate and other information to customers.
- ③ Invite customers to visit our company to inspect product design process and quality pipe 3 system.
- ④ Entrust technical personnel according to the site situation and user needs for free design, selection.



## on-purchase service

- ① In the process of product manufacturing, relevant technicians of customers are invited to our company to inspect the table inspection of various processes in the manufacturing process, and provide relevant technicians of customers with the table inspection standards and table inspection results of products.



## after-sales service

- ① Carry out technical training according to customers' needs, and improve products according to customers' needs in time.
- ② Reply to the incoming calls and letters from customers within 8 hours, and the service engineer shall be on standby for 24 hours; Failure not solved, service engineer.



**Address:** Floor 4, Building 4, Linrong Technology Park, West of Yuhe Road, Economic Development Zone, Huiyang District, Huizhou city  
**Tel:** +86 18825201603  
**Mail:** [info@lemaxenergy.com](mailto:info@lemaxenergy.com)