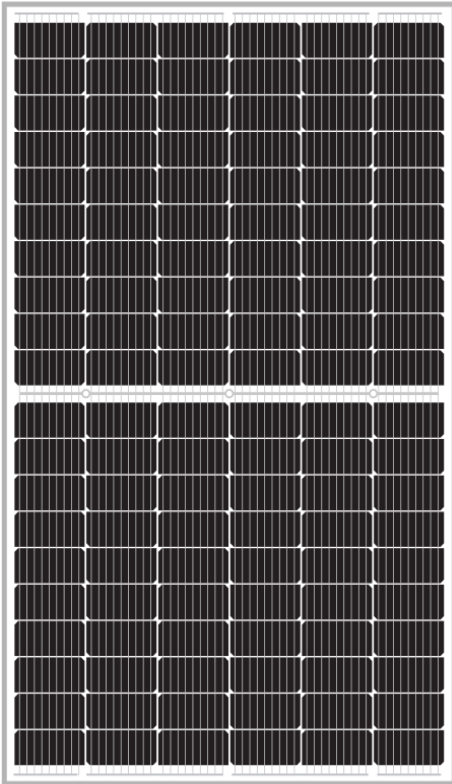
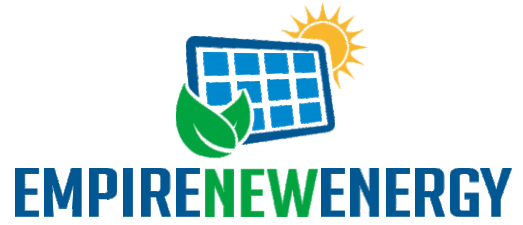
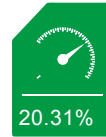


EMP-***S120A
 EMP-***S120AH
 POWER OUTPUT RANGE
350-370



POWER TOLERANCE

0-+5W



MAXIMUM EFFICIENCY

20.31%



5400Pa
2400Pa

Certied to withstand the most challenging environmental conditions

- 2400 Pa wind load
- 5400 Pa snow load
- 35 mm hail stones at 97 km/h



- PID resistant and free of snail trails
- Increased module robustness to minimize micro-cracks



Pass class A fire test



25 Year Linear Power Warranty

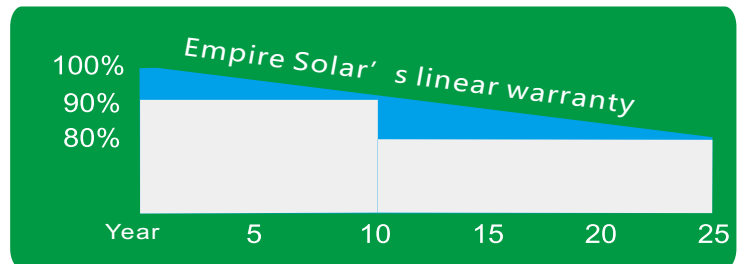
Comprehensive Products And System Certicates

IEC61215/IEC61730/UL1703/IEC61701/IEC62716
 ISO 9001: Quality Management System
 ISO 14001: Environmental Management System
 OHSAS 18001: Occupation Health and Safety Management System



LINEAR PERFORMANCE WARRANTY

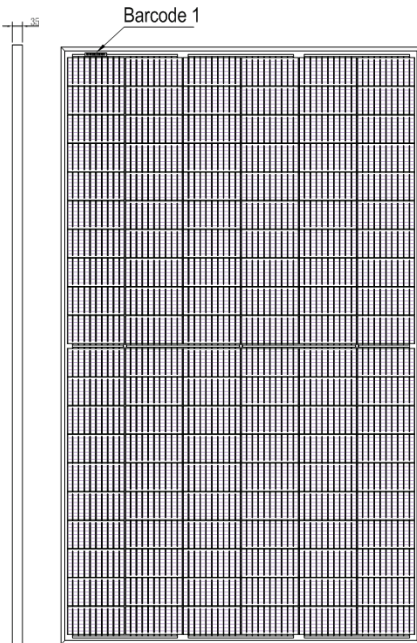
10 Year Product Warranty - 25 Year Linear Power Warranty





EMPIRENEWENERGY

EMP- (350-370) S120A
EMP- (350-370) S120AH



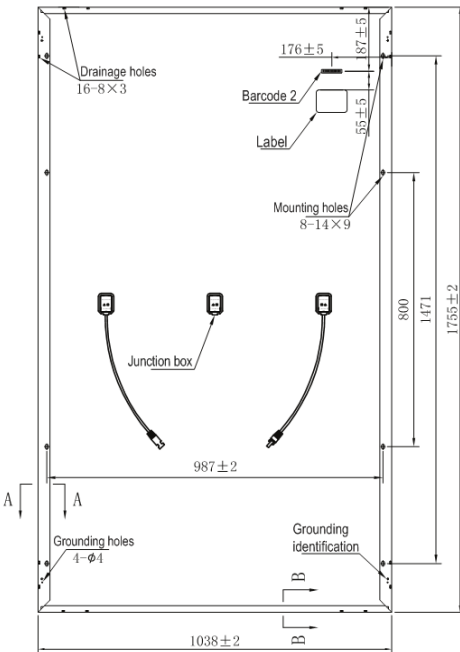
ELECTRICAL DATA (STC)

Peak Power Watts-PMAX (Wp)	350	355	360	365	370
Power Output Tolerance-PMAX (W)	0~+5				
Maximum Power Voltage-VMPP (V)	33.4V	33.6V	33.8V	34.0V	34.2V
Maximum Power Current-IMPP (A)	10.48A	10.57A	10.66A	10.74A	10.82A
Open Circuit Voltage-VOC (V)	40.2V	40.4V	40.6V	40.8V	41.0V
Short Circuit Current-ISC (A)	11.04A	11.14A	11.24A	11.33A	11.42A
Module Efficiency (%)	19.21%	19.49%	19.76%	20.04%	20.31%

STC: Irradiance 1000W/m², Cell Temperature 25C°, Air Mass AM1.5.

MECHANICAL DATA

Solar Cells	Monocrystalline 166 × 83mm 120 cells
Cell Orientation	(6 × 20) 1755×1038×35mm
Module Dimensions	
Weight	20.5kg
Glass	3.2 mm (0.13 inches), High Transmission, AR Coated Tempered Glass
Backsheet	White
Frame	Silver Anodized Aluminium Alloy
J-Box	IP 68 rated
Cables	Photovoltaic Technology Cable 4.0mm ² (0.006 inches)
Connector	Mc4 Compatible



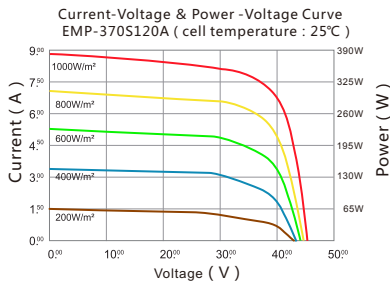
TEMPERATURE RATINGS

Temperature Coecient of Pmax	-0.36%/°C
Temperature Coecient of Voc	-0.29%/°C
Temperature Coecient of Isc	0.05%/°C

MAXIMUM RATINGS

Operational Temperature	-40 +85°C
Maximum System Voltage	1000V/1500V
Max Series Fuse Rating	20A

(DO NOT connect Fuse in Combiner Box with two or more strings in parallel connection)



WARRANTY

- 10 year Product Workmanship Warranty
- 25 year Linear Power Warranty

PACKAGING CONFIGURATION

- Modules per box: 30 pieces
- Modules per 40' container: 840pieces