



SOLAR LEADING

To a better future

SL6P36-140W-150W

Polycrystalline Photovoltaic Module



14.23-15.24%
MAXIMUM EFFICIENCY

140-150W
POWER OUTPUT RANGE

36 CELL
POLYCRYSTALLINE MODULE

0~+5W
POSITIVE OUTPUT GUARANTEE



Excellent low light performance on cloudy days, mornings and evenings

- Anti-reflective coating



Great aesthetics for residential applications

- High efficiency, lower weight, Easy handling and optimum utilization of roof space



Certified to withstand challenging environmental conditions

- 2400 Pa wind load
- 5400 Pa snow load
- 35mm hail stone at 97 km/hr



IP68 connectors enhance the reliability of the PV system



Blowing sand resistance certification



Anti-PID



Fire test certification



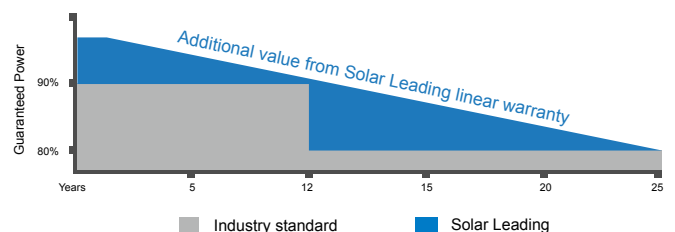
Ammonia corrosion certification



Salt mist corrosion certification

LINEAR PERFORMANCE WARRANTY

12 Year Product Warranty 25 Year Linear Power Warranty



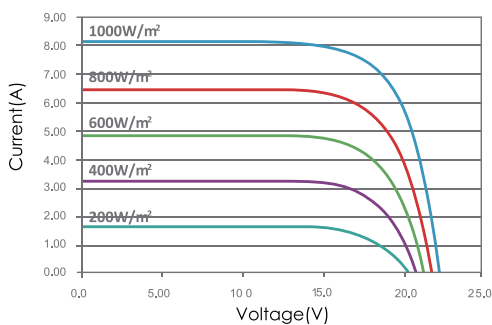
Electrical Characteristics

Characteristics	Unit	SL6P36-140W	SL6P36-145W	SL6P36-150W
Maximum Power (Pmax)	W	140	145	150
Power Tolerance	W	(0, +5)	(0, +5)	(0, +5)
Maximum Power Voltage (Vmp)	V	18.0	18.0	18.0
Maximum Power Current (Imp)	A	7.78	8.00	8.14
Open Circuit Voltage (Voc)	V	21.6	21.7	21.7
Short Circuit Current (Isc)	A	8.00	8.34	8.62
Module Efficiency (ηm)	%	14.23	14.74	15.24
Dimension of module	mm	992×992×35 mm (39.1 × 39.1 × 1.4 inch)		
Pmax Temperature Coefficient	%/C	-0.48		
Voc Temperature Coefficient	%/C	-0.35		
Isc Temperature Coefficient	%/C	+0.04		
Maximum System Voltage	VDC	600V(UL)/1000V(TUV,IEC)		
Maximum Series Fuse Rating	A	10		
Operating Temperature	°C	-40~ +85		
NOCT	°C	45±2		

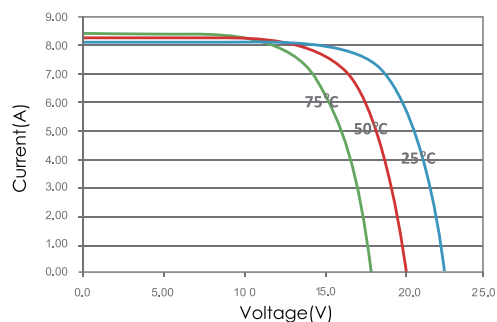
STC:1000W/m².AM1.5 and 25 °C cell temperature: NOCT : Nominal Operating Cell Temperature

I-V Curves

I-V Curves of PV Module SL6P36-140W
(Cell Temp. 25 °C)

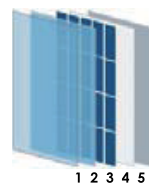
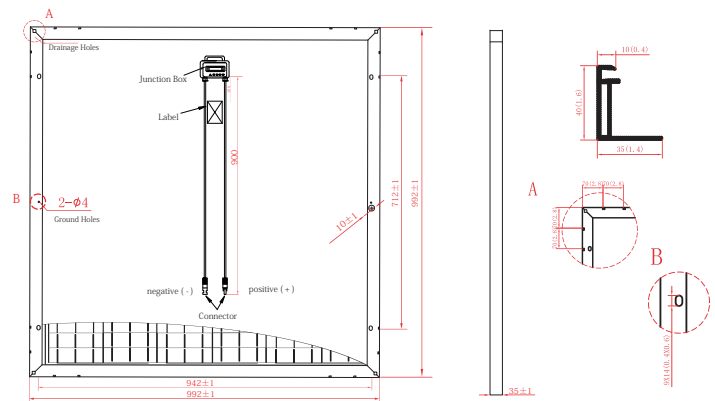


I-V Curves of PV Module SL6P36-140W
at Different Cell Temp. (AM1.5, 1000W/m²)



Physical Characteristics

Unit:mm(inch)



- 1. Tempered Glass
- 2. EVA(Ethylene Vinyl Acetate)
- 3. Solar Cells
- 4. EVA(Ethylene Vinyl Acetate)
- 5. Backsheet

Dimension	992×992×35 mm (39.1 × 39.1 × 1.4 inch)
Weight	11.5 kg (25.4 lbs.)
Cable Length	900 mm (35.4 inch)
Bypass Diodes	2 pcs
Junction Box	IP 65
Front Glass	3.2 mm (0.1inch) tempered low-iron glass
Frame	Anodized aluminum alloy

* Specifications are subjected to change without further notice

