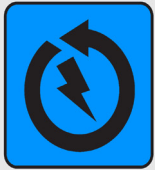


144 CELL SERIES

435W-445W



Class Leading Output:
445W Bifacial top tier
power performance



Advanced Technology:
Module efficiencies above 21%
MONO PERC 9 busbar cells



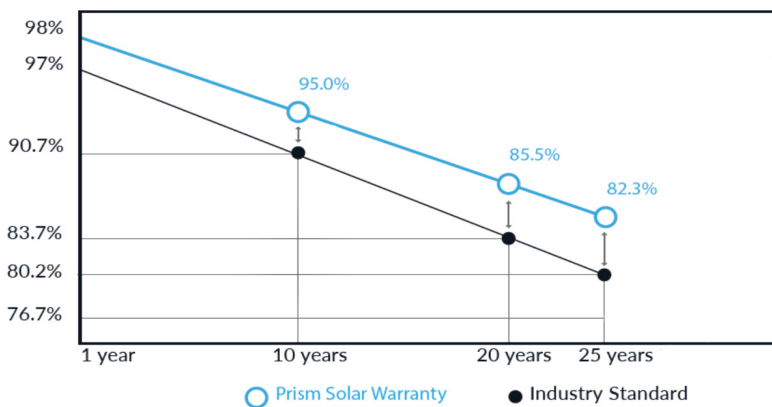
Reduced System Costs:
1500V robust framed design
drives lower installation costs



Certified Reliability:
Tested above and beyond
IEC Standards



Linear Performance Warranty



Proudly Engineering, Designed and
Tested in the USA.



IEC 61215/ IEC 61730/ IEC 6170

144 CELL SERIES

435-445W

Electrical Data PST-XXX-M72HB 435W, 440W, 445W

Projected specifications @ STC

Parameters		STC ¹	BSTC
Rated Power	P _{max} (W)	435/440/445	492/498/504
Rated Voltage	V _{mp} (V)	41.66/41.81/41.96	
Rated Current	I _{mp} (A)	10.44/10.52/10.61	11.81/11.91/12.01
Open Circuit Voltage	V _{oc} (V)	50.35/50.50/50.58	
Short Circuit Current	I _{sc} (A)	11.31/11.34/11.37	12.80/12.84/12.87
Module Efficiency	(%)	20.94/21.06/21.18	23.70/23.84/23.98
Max System Voltage	UL/IEC	1500V	
Series Fuse Rating/Limiting Reverse Current		20A	
Power Tolerance		-0/+5W	
Electrical Parameter Tolerance		-5%/+5%	
Power Temperature Coefficient		-0.37 %/°C	
Voltage Temperature Coefficient (V _{oc})		-0.29 %/°C	
Current Temperature Coefficient (I _{sc})		+0.05 %/°C	
NOCT (C°)		45°C +/- 2°C	

Mechanical Data

Front Glass	3.2mm Tempered Low Iron, Anti-reflective coating
Frame Type	Anodized Aluminum Alloy
Bypass Diodes	3
Junction Box	IP68 with bypass-diodes
Cable (Type/Gauge/Length)	PV Wire 12 AWG 4mm ² 300mm P 400mm N
Connectors	MC4 compatible
Exterior Glass Dimensions	2108mm X 1048mm X 35mm (83in X 41.26in X 1.38in)
Weight	25kg (55 lbs.)

Operating Conditions

Temperature	-40°C to 85°C (-40°F to 185°F)
Max Mechanical Load ³	2400 Pa wind load 5400 Pa snow load
Hail Safety Impact Velocity	

Certifications & Warranty

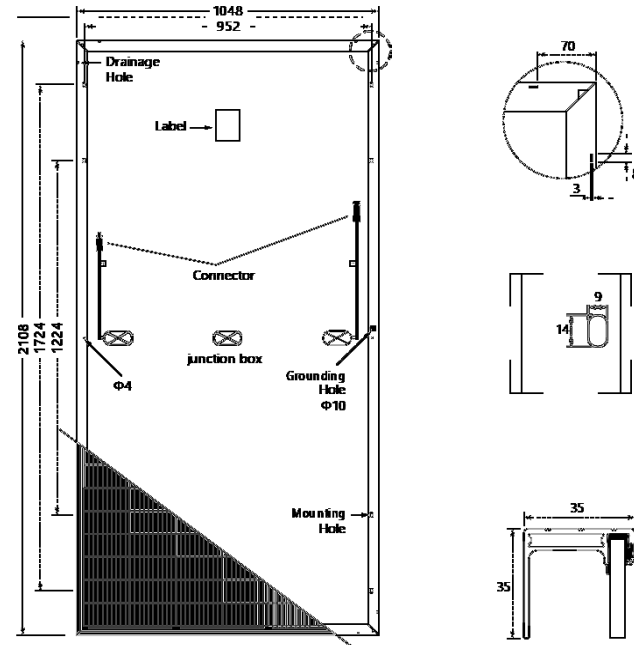
Certifications and Listings	IEC61215/61730, CEC, Salt Mist
Fire Rating	Type=1 ; Class C
Limited Warranty (Workmanship/Power)	25 Years/25 Years Output ⁴

- 1 - Measured at Standard Testing Conditions (STC): cell temp 25°C, AM1.5, 1000W/m².
- 2 - Length and width dimensions are +/- 5mm.
- 3 - To achieve this max weight loading, the support and racking system must meet the mechanical weight loading specified.
- 4 - Please see the Prism Solar Warranty for complete details.

IMPORTANT: Prism modules are rated at STC conditions and Bifacial STC conditions (BSTC). BSTC ratings account for additional power produced from the back of the module. Under certain mounting conditions, Prism modules could produce more power than their STC rating. This additional power should be accounted for using the BSTC rating when sizing and selecting system components.

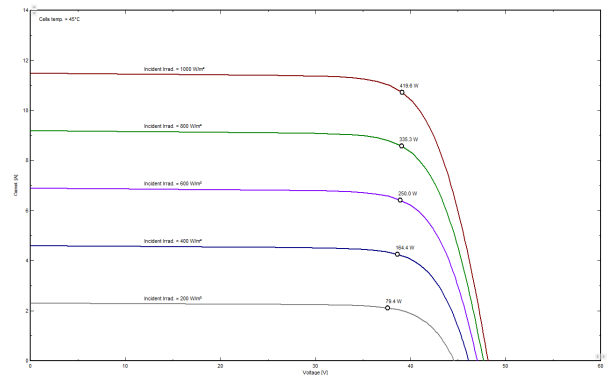
CAUTION: Read the Installation Manual and Design Guide carefully before using this product. All specifications are subject to change without notice.

PST-xxxW-M72HB specifications, all values subject to change without notice. All rights reserved.
rev 1



Dimensions, mm [in]

Length & width dimensions and j-box location are +/- 5mm.



Temperature Dependence PST-445W-M72HB

Prism Solar
TECHNOLOGIES

520 Broad Street, Newark NJ 07102

845-883-4200

www.prismsolar.com