

MSP-TT photovoltaic mounting system by Schweizer.

The MSP-TT photovoltaic mounting system is suitable for mounting framed photovoltaic solar modules onto trapezoidal sheet metal roofs. With the improved MSP-TT version, the system has once again been made simpler and more manageable.

As a new feature, a completely prefabricated rail in three lengths with sealing liner and a flexible hole pattern is now supplied for installation on the trapezoid metal roof with the help of one or two raised beads. Just like the other photovoltaic mounting system MSP series by Schweizer, the mounting process used by the MSP-TT photovoltaic mounting system is ingeniously simple.

Because of its flexibility, the MSP-TT photovoltaic mounting system can be used for a broad range of flat metal roofs and diverse module sizes. Additional cutting on site, extra drilling work or preparation of the surfaces are all unnecessary. Newly available is a centre clamp for tested equipotential bonding.



The MSP-TT photovoltaic mounting system by Schweizer:

The ingeniously simple system for mounting photovoltaic modules onto metal roofs.

User-friendly, high-quality products, ease of use and as few parts as possible – these are the requirements for fast and cost-efficient installation. The new MSP-TT photovoltaic mounting system fulfils all these aspects.

Application

- Mounting system for securing framed, crystalline photovoltaic modules onto single-layer flat metal roofs.
- Can be used on insulated sandwich panels with manufacturer's approval.

Fast and easy installation

- Few components required
- Few sources of errors, since cutting or hole-drilling on site are no longer necessary.
- Highly versatile and suitable for a large number of module sizes, roof pitches and surfaces.

Advantages at a glance

- No cutting on site: The MSP-TT trapezoid rails are completely prefabricated.
- No drilling: Thin sheet screws hole patterns make additional drilling unnecessary.
- Short rails: Are easy to handle.
- Flexibility: There are no length restrictions, because the thermal expansion is automatically absorbed.
- No trapezoidal sheet flashing: Mounting is carried out onto the metal corrugations. Thus individually manufactured components are unnecessary.
- Excellent corrosion protection: Aluminium components and the EPDM tape prevent infiltration of moisture.
- Tested equipotential bonding with new centre clamp MSP-PR-MCG.
- Professional software: Intuitively operated planning software with access to the entire wealth of construction expertise.

Technical Data

By only using few components, installation is exceptionally efficient, fast and simple:

- MSP-TT trapezoidal rail for one or two beads
- MSP-TT-TS 6×25 thin sheet screw
- Middle clamp
- End clamp

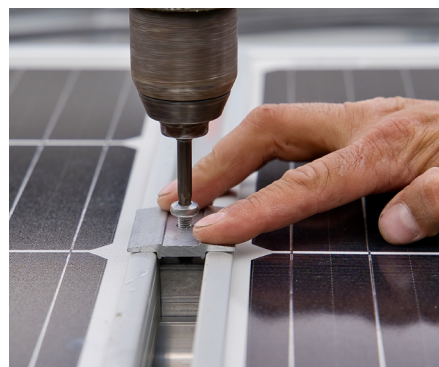
All components are standard components and available in stock.

Fast and efficient planning

- The Solar.Pro.Tool by Schweizer provides detailed documentation of the static calculations, bills of materials and drawings for a fast and safe installation. In addition, the complete 3D visualisation provided by Schweizer's Solar.Pro.Tool enables simple and fast layout planning and optimum use of the roof.



Few components required for fast and simple mounting.



Simple and reliable mounting.



Cutting on site or drilling are unnecessary.