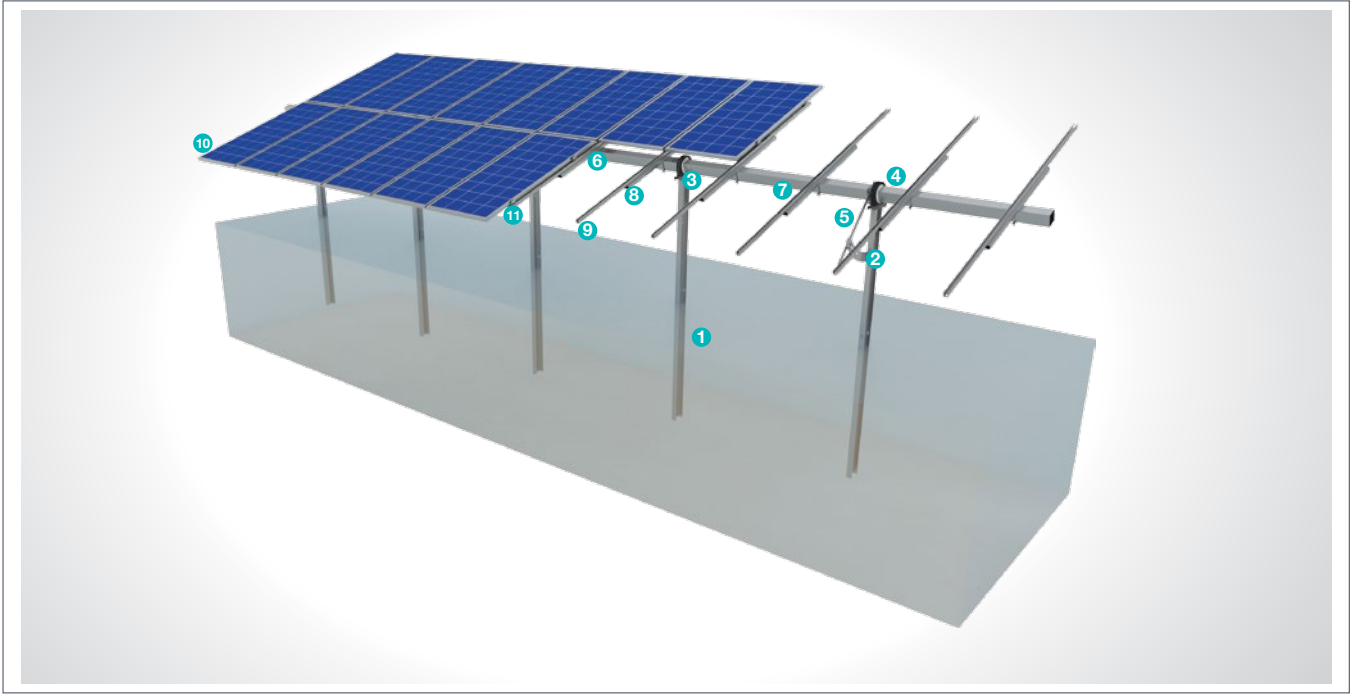


## (KPT17) Ground Driven Manual Moving Single Axis Steel Mounting System with 2 Vertical Panels

### Overview

KPT17, is a manual moving ground driven steel support and mounting system with 2 vertical panels for open terrain solar panels. The system is an optimal application solution for installations of PV projects on large and medium-sized terrains . After manufacturing the system components with high-technology machines and equipment, an excellent corrosion resistance is then achieved through hot-dip galvanized coating. The system, incorporating a high-level engineering design, provides assembly and cost advantages. It provides a more efficient use of solar panels. The system is moved manually according to season.

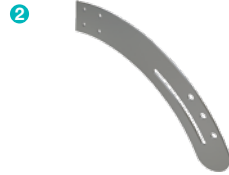


#### STEEL COLUMN



- **CK-150**  
M12X30 Knurled Bolt  
M12 Flanged Nut  
M12 Washer

#### STEEL ARM



- **CKL**  
M12X30 Knurled Bolt  
M12 Flanged Nut  
M12 Washer

#### STEEL T / TP



- **CT**  
M12X30 Knurled Bolt  
M12 Flanged Nut  
M16X180 Knurled Bolt  
M16 Flanged Nut  
M16/M12 Washer

#### TP



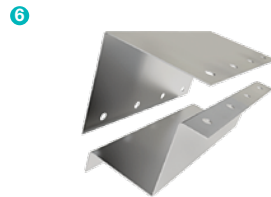
- **TP-100 / TP-110**  
M16X180 Knurled Bolt  
M16 Flanged Nut  
M16 Washer

#### STEEL ANGLE ADJUSTMENT LEVER



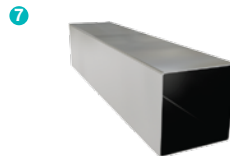
- **CADK**  
M12X30 Knurled Bolt  
M12 Flanged Nut  
M12 Washer

#### PURLIN CONNECTOR JOINING PIECE



- **KPE**  
M12X30 Knurled Bolt  
M12 Flanged Nut  
M12 Washer

#### STEEL SQUARE PURLIN



- **KPA**  
M12X30 Knurled Bolt  
M12 Flanged Nut  
M12 Washer

#### STEEL RECTANGULAR RAFTER



- **DPM-80x40**  
M12X110 Square Bolt  
M12 Flanged Nut  
M12 Square Bolt Washer

### STEEL PROFILE

9



- **CP41x41**  
M12X110 Square Bolt  
M12 Flanged Nut  
M12 Square Bolt Washer

### PANEL CENTER RETAINER

10



- **L70**  
M8X30 Hex Bolt  
M8 Rectangular Nut

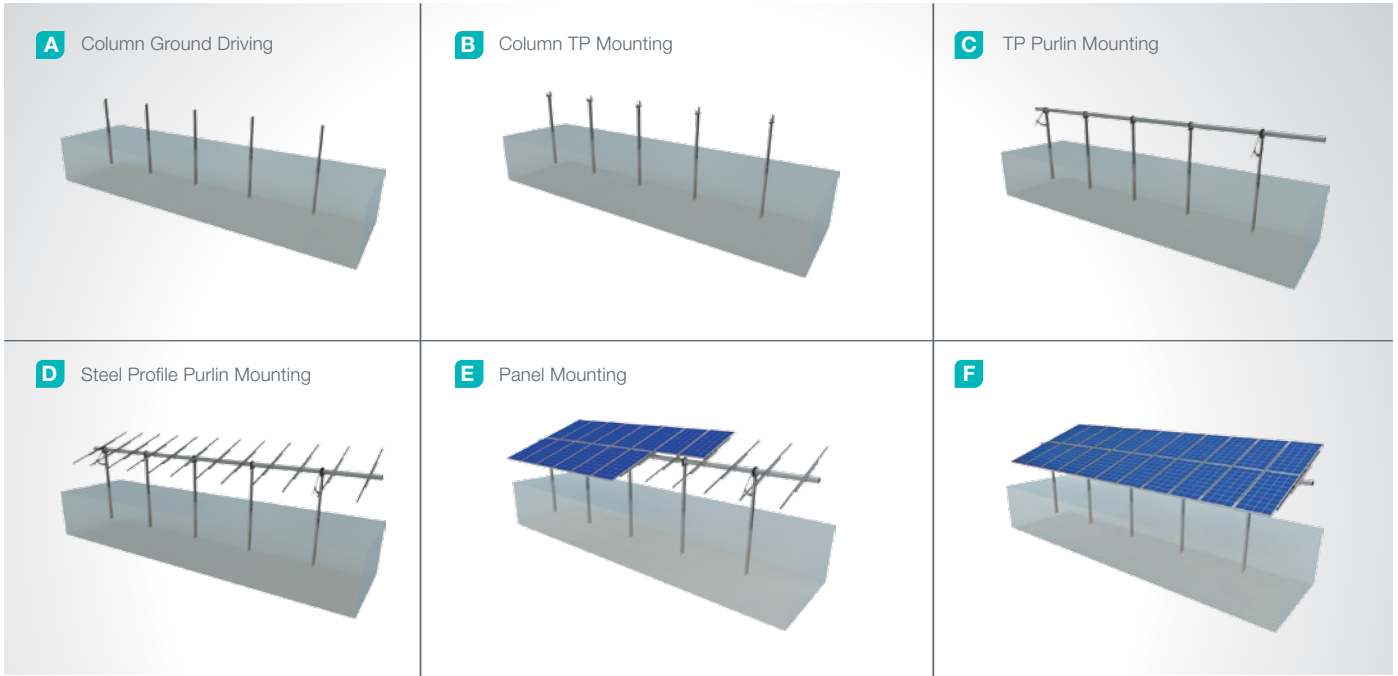
### PANEL SIDE RETAINER

11



- **H30-H32-H40**  
M8X30 Hex Bolt  
M8 Flanged Nut

## Installation Phase



## Advantages

- Time saving for installation
- Cost saving for installation
- Flexible solutions for different types of terrains
- Up to 10% efficiency advantage
- Low maintenance cost
- Independent rack movements
- Tailored design solutions for customer
- Customer oriented engineering solutions

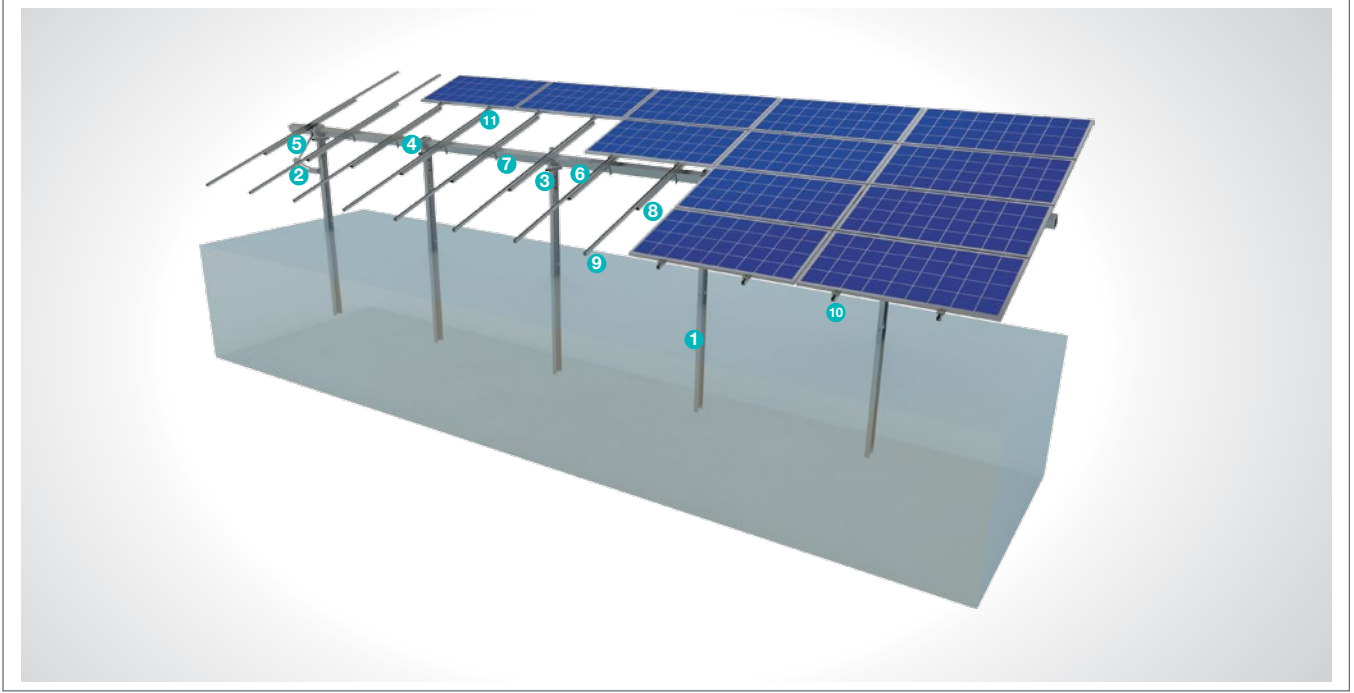
## Technical Specifications

Description:	(KPT17) Ground Driven Manual Moving Single Axis Steel Mounting System with 2 Vertical Panels
Mounting Method:	Ground Driving
Tilt Angle:	0-60 degrees
Module Application:	Framed and Unframed
Panel Height from Ground:	60 cm
Column and Beam Coating:	EN ISO 1461
Column and Beam Material:	EN 10025 / EN 10029
Optional Beam Material:	EN 10346
Panel Retainer:	EN AW 6063
Connector Equipment:	DIN 934 / DIN933 / DIN 912, A2-70 DIN 50979

## (KPT18) Ground Driven Manual Moving Single Axis Steel Mounting System with 4 Horizontal Panels

### Overview

KPT18, is a manual moving ground driven steel support and mounting system with 4 horizontal panels for open terrain solar panels. The system is an optimal application solution for installations of PV projects on large and medium-sized terrains . After manufacturing the system components with high-technology machines and equipment, an excellent corrosion resistance is then achieved through hot-dip galvanized coating. The system, incorporating a high-level engineering design, provides assembly and cost advantages. It provides a more efficient use of solar panels. The system is moved manually according to season.

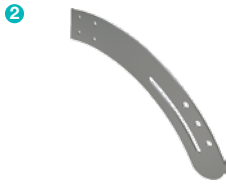


#### STEEL COLUMN



- **CK-150**  
M12X30 Knurled Bolt  
M12 Flanged Nut  
M12 Washer

#### STEEL ARM



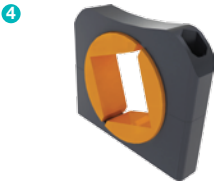
- **CKL**  
M12X30 Knurled Bolt  
M12 Flanged Nut  
M12 Washer

#### STEEL T/TP



- **CT**  
M12X30 Knurled Bolt  
M12 Flanged Nut  
M16X180 Knurled Bolt  
M16 Flanged Nut  
M16/M12 Washer

#### TP



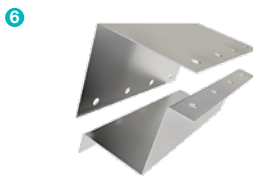
- **TP-100 / TP-110**  
M16X180 Knurled Bolt  
M16 Flanged Nut  
M16 Washer

#### STEEL ANGLE ADJUSTMENT LEVER



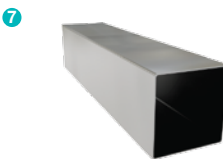
- **CADK**  
M12X30 Knurled Bolt  
M12 Flanged Nut  
M12 Washer

#### PURLIN CONNECTOR JOINING PIECE



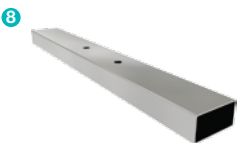
- **KPE**  
M12X30 Knurled Bolt  
M12 Flanged Nut  
M12 Washer

#### STEEL SQUARE PURLIN



- **KPA**  
M12X30 Knurled Bolt  
M12 Flanged Nut  
M12 Washer

#### STEEL RECTANGLE RAFTER



- **DPM-80x40**  
M12X110 Square Bolt  
M12 Flanged Nut  
M12 Square Bolt Washer

### STEEL PROFILE

9



- **CP41x41**  
M12X110 Square Bolt  
M12 Flanged Nut  
M12 Square Bolt Washer

### PANEL CENTER RETAINER

10



- **L70**  
M8X30 Hex Bolt  
M8 Rectangular Nut

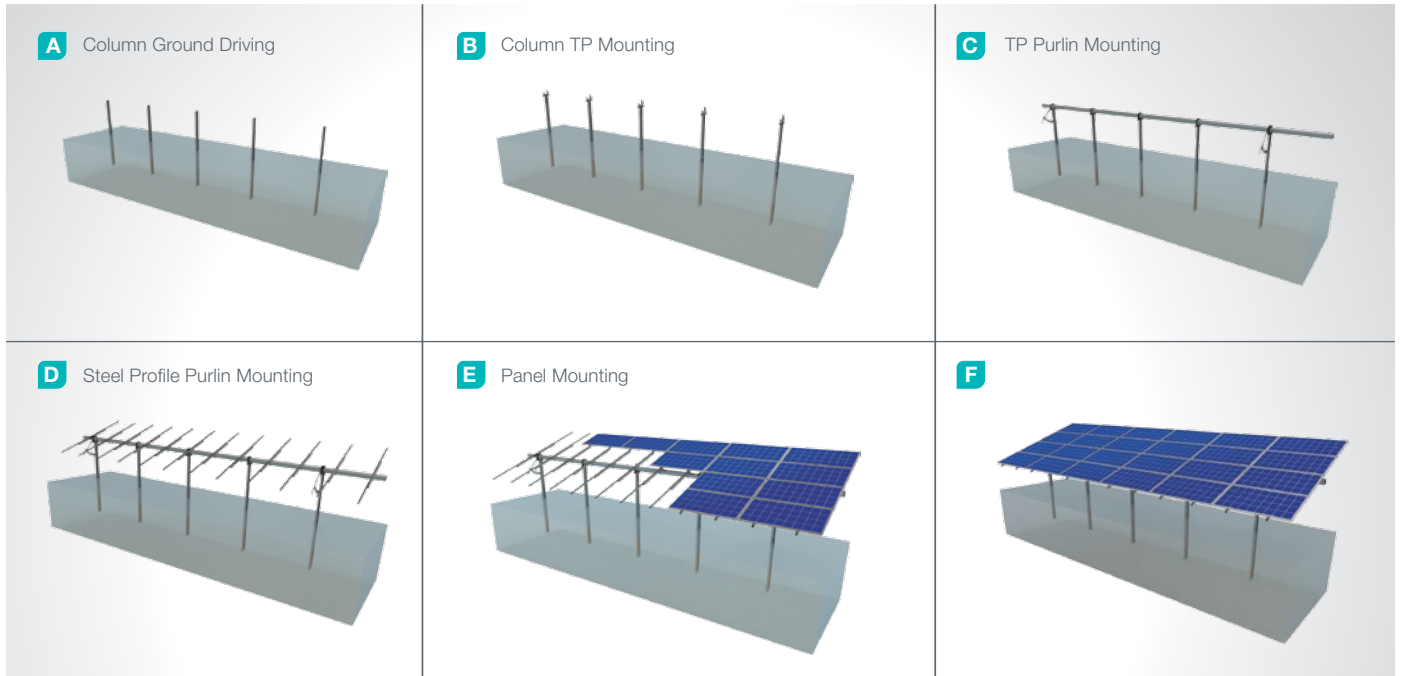
### PANEL SIDE RETAINER

11



- **H30-H32-H40**  
M8X30 Hex Bolt  
M8 Rectangular Nut

## Installation Phase



## Advantages

- Time saving for installation
- Cost saving for installation
- Flexible solutions for different types of terrains
- Up to 10% efficiency advantage
- Low maintenance cost
- Independent rack movements
- Tailored design solutions for customer
- Customer oriented engineering solutions

## Technical Specifications

Description:	(KPT18) Ground Driven Manual Moving Single Axis Steel Mounting System with 4 Horizontal Panels
Mounting Method:	Ground Driving
Tilt Angle:	0-60 degrees
Module Application:	Framed and Unframed
Panel Height From Ground:	60 cm
Column and Beam Coating:	EN ISO 1461
Column and Beam Material:	EN 10025 / EN 10029
Optional Beam Material:	EN 10346
Panel Retainer:	EN AW 6063
Connector Equipment:	DIN 934 / DIN933 / DIN 912, A2-70 DIN 50979