



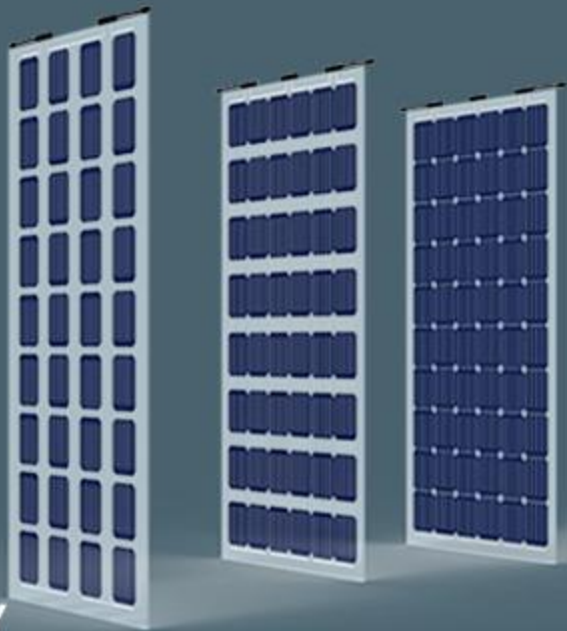
YINGLI
英利集团

Colored Glaze Crystal Clear

0-5W POWER TOLRANCE

17.3% CELL EFFICIENCY

25YEAR PRODUCT LINEAR WARRANTY



25 Years Linear Warranty



High transmissivity, low-iron tempered glass.



Using high efficiency mono solar cells



Excellent performance in low-light environments



High quality junction box and connector systems



100% inspection, to guarantee the reliability of solar systems



Anti LID



Anti PID



Lower temperature coefficient

Advantages

Same life cycle of buildings

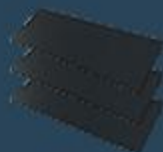


Solar Tile- Bent Tile

Building Roof

Photovoltaic bent tile

(New green building materials, smooth curves, rich colors, excellent safety performance)



Solar Tile- Flat Tile

Building roof, building wall

Photovoltaic flat tile

(Special texture design, high waterproof and fireproof grade)



Solar Fences

Architectural Appendages

Architectural Appendages
Integrated PV
Architectural Appendages Integrated PV
(Balconies, Fences, Blinds, Sun visors)

Building energy conservation + Renewable energy utilization" is the best way to achieve the goal of "Carbon peak and Carbon neutrality" in the construction industry.

3.5 Million RMB

BIPV total investment

3%

10.04 Million RMB

Total revenue 25 years

8.4%

409000kWh

KWh/Year

24%

408 ton

Emissions CO₂/Year

24%

338 ton

Develop CCER/Year

100%

Construction-grade materials with the same life span as the building

Beautiful



Low reflection
High power



Colorful Fashion



Modular design perfectly
matches the building



No discoloration
No fading

Safe



Double waterproof
Strong sealing performance



Class A fireproof



High temperature and
humidity resistance



Extreme weather
resistance

Urbale



Building material
Certificated



Structure
Stabilization



Corrosion resistance
and impact resistance



High power
generation

Stable



Wind resistance
performance



Dynamic water
tightness



Excellent air tightness



Structural stability
and safety



Group photo of the technical team of the Thousands of People's Congress



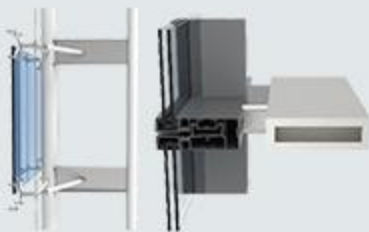
Hire German experts for blue-collar technical training

- ✓ In 2008, it completed the world's "first application in a five-star hotel photovoltaic building integrated electric valley hotel project", and trained technical talents in the four aspects of design, production, construction, and operation and maintenance of the entire industry chain for the BIPV industry.
- ✓ Cooperate with the world's top BIPV experts in production, learning and research.
- ✓ It has a technical team of 1,000 people, 122 core R&D personnel, and 56 senior engineers; it has established academician workstations, post-doctorate workstations and other talent training platforms.
- ✓ In 2013, we hired German experts to conduct blue-collar technician training, directly training 520 senior technicians, and invested 21 million yuan; to improve the work attitude, ideology and professional ethics of all employees.

Roofing system



Facade system



Fence system



PV green building materials R&D and design, Aluminum profile and construction design, Engineering support, and customized design.



↑ TUV Rheinland IEC2016
New Standard

The first BIPV certification



↑ 3C

The first BIPV industry
product safety certification



↑ CQC

The first green building
material certification in
the BIPV industry



↑ CGC

The first batch of glass
breaking safety certification

A total of 2544 patents have been applied for and 2177 have been authorized. Since 2012, the number of patent applications and authorizations has been ranked first in the domestic photovoltaic industry for eight consecutive years, including 262 in the BIPV field.

The only photovoltaic company in China that owns invention patents for curved surface manufacturing and mass production technology.



- ▲ In 2010, Yingli established Chinese first state key photovoltaic laboratory ;
- ▲ In 2018, it built the only national technological standard innovation base in Chinese photovoltaic field, and became the only company in photovoltaic industry with five national-level scientific research platforms;
- ▲ The research space exceeds 60,000 square meters, and the total value of R&D equipment is nearly 300 million yuan;
- ▲ The accumulated R&D investment is 3.5 billion yuan, of which nearly 1 billion yuan is invested in the field of photovoltaic building integration (22% for basic research, 10% for applied research, and 68% for demonstration applications).



Business center



Smart microgrid System



Eco-park



Smart Transportation



Public building

Material structure drawing

