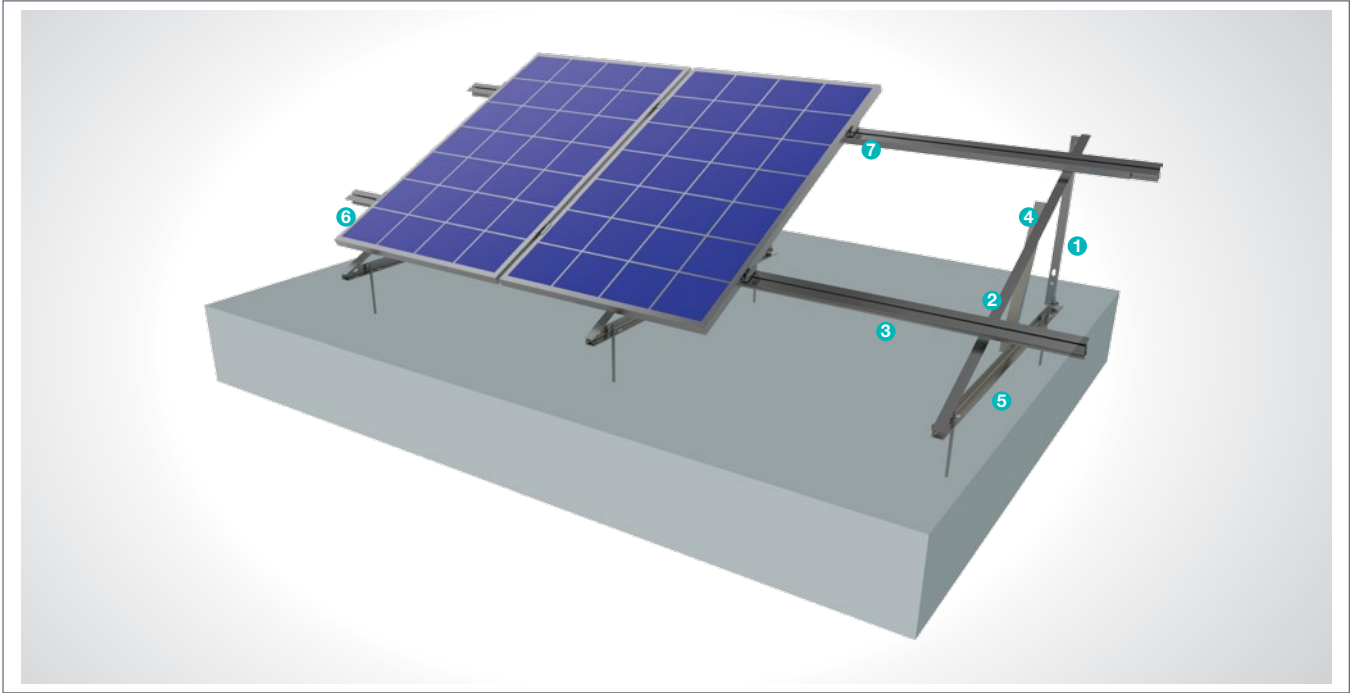


(KPT25) Flat Roof Steel Mounting System With Aluminum Purlin & 1 Vertical Panel

Overview

KPT25, is a flat roof steel mounting system with aluminum purlin and 1 vertical panel. The system is an optimal application solution for installations of PV projects on large and small-sized roofs. After manufacturing the system components with high-technology machines and equipment, an excellent corrosion resistance is then achieved through hot-dip galvanized coating. The system, incorporating a high-level engineering design, provides assembly and cost advantages.



L BRACKET COLUMN

1



- **LK-40x40**
M12X30 Knurled Bolt
M12 Flanged Nut
M8/M12 Washer

L BRACKET BEAM

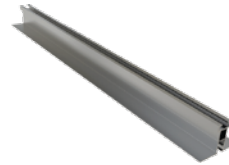
2



- **LR-40x40**
M12X30 Knurled Bolt
M12 Flanged Nut
M12 Washer

ALUMINUM PURLIN

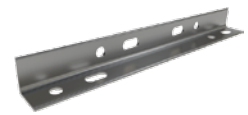
3



- **AA-100x70**
M12X30 T Bolt
M12 Flanged Nut
M8X30 Hex Bolt
M8 Square Nut
M8/M12 Washer

L BRACKET DIAGONAL

4



- **LD-40X40**
M12X30 Knurled Bolt
M12 Flanged Nut
M12 Washer

L BRACKET ANCHOR

5



- **LA 40x40**
M12X30 Knurled Bolt
M12 Flanged Nut
M12 Washer

PANEL SIDE RETAINER

6



- **H30-H32-H40**
M8X30 Hex Bolt
M8 Square Nut

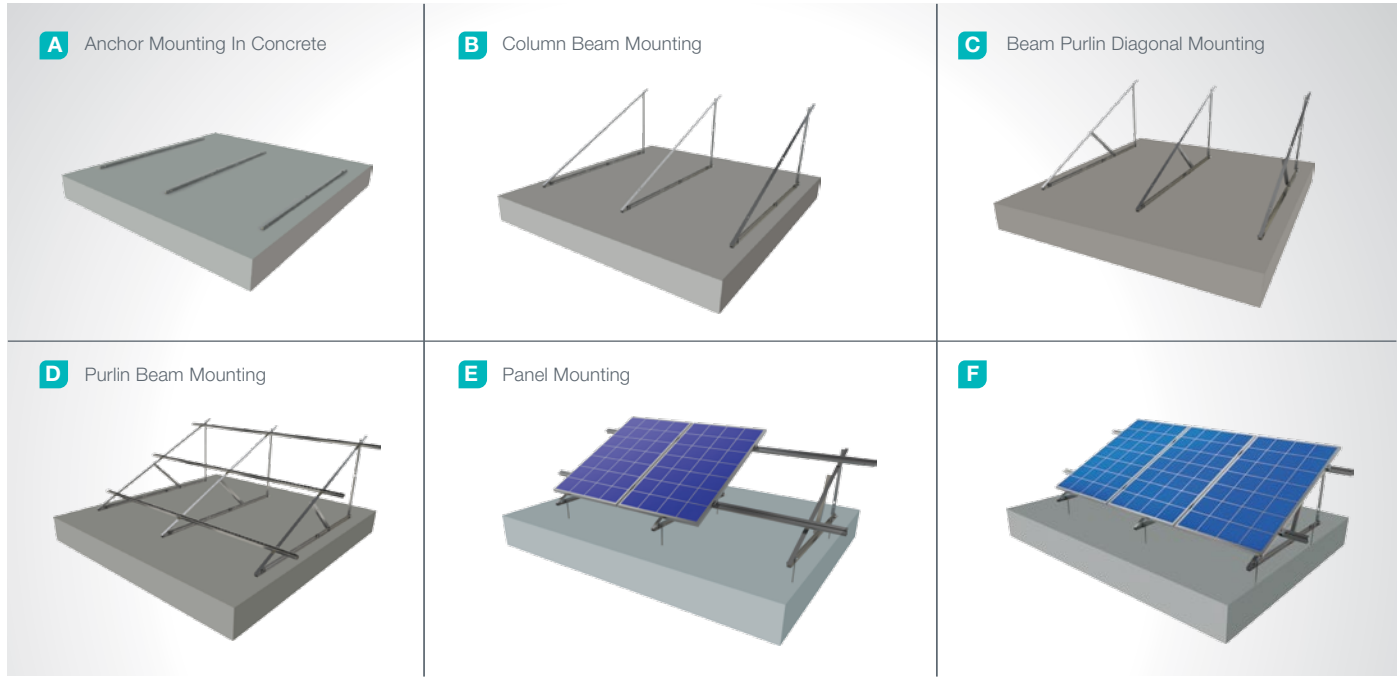
PANEL CENTER RETAINER

7



- **L70**
M8X30 Hex Bolt
M8 Square Nut

Installation Phase



Advantages

- Time saving for installation
- Cost saving for installation
- Suitable solutions for different roof types
- 3 different types of angular adjustment
- Ballasted Mounting
- Tailored design solutions for customer
- Customer oriented engineering solutions

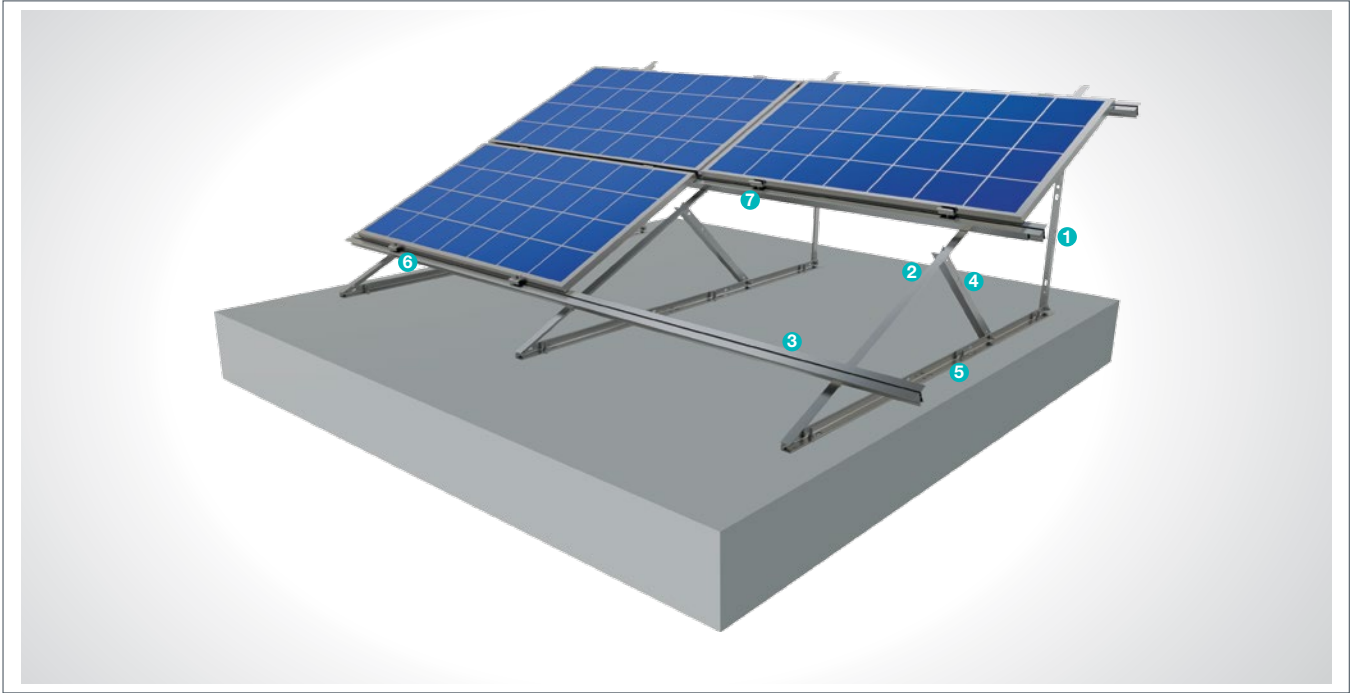
Technical Specifications

Description:	(KPT25) Flat Roof Steel Mounting System With Aluminum Purlin & 1 Vertical Panel
Mounting Method:	Roof Floor Mounting
Module Application:	Framed and Unframed
Column and Beam Coating:	EN ISO 1461
Column and Beam Material:	EN 10025 / EN 10029
Optional Beam Material:	EN 10346
Panel Retainer:	EN AW 6063
Purlin Material:	EN AW 6063
Connector Equipment:	DIN 934 / DIN933 / DIN 912, A2-70 DIN 50979

(KPT26) Flat Roof Steel Mounting System With Aluminum Purlin & 2 Horizontal Panels

Overview

KPT26, is a flat roof steel mounting system with aluminum purlin and 2 horizontal panels. The system is an optimal application solution for installations of PV projects on large and small-sized roofs. After manufacturing the system components with high-technology machines and equipment, an excellent corrosion resistance is then achieved through hot-dip galvanized coating. The system, incorporating a high-level engineering design, provides assembly and cost advantages.



L BRACKET COLUMN

1



- **LK-40x40**
M12X30 Knurled Bolt
M12 Flanged Nut
M8/M12 Washer

L BRACKET BEAM

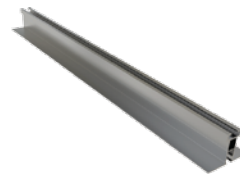
2



- **LR-40x40**
M12X30 Knurled Bolt
M12 Flanged Nut
M12 Washer

ALUMINUM PURLIN

3



- **AA-100x70**
M12X30 T Bolt
M12 Flanged Nut
M8X30 Hex Bolt
M8 Square Nut
M8/M12 Washer

L BRACKET DIAGONAL

4



- **LD-40X40**
M12X30 Knurled Bolt
M12 Flanged Nut
M12 Washer

L BRACKET ANCHORAGE

5



- **LA 40x40**
M12X30 Knurled Bolt
M12 Flanged Nut
M12 Washer

PANEL SIDE RETAINER

6



- **H30-H32-H40**
M8X30 Hex Bolt
M8 Square Nut

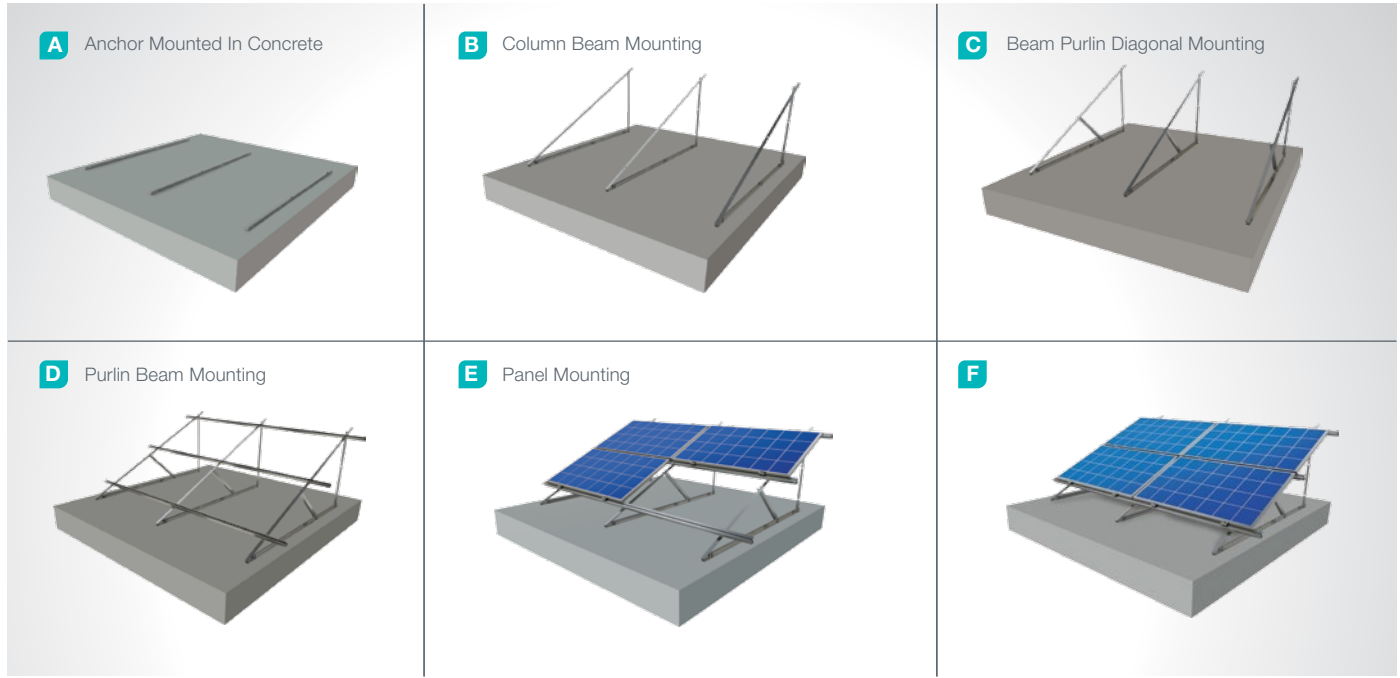
PANEL CENTER RETAINER

7



- **L70**
M8X30 Hex Bolt
M8 Square Nut

Installation Phase



Advantages

- Time saving for installation
- Cost saving for installation
- Suitable solutions for different roof types
- 3 different types of angular adjustment
- Ballasted mounting
- Tailored design solutions for customer
- Customer oriented engineering solutions

Technical Specifications

Description:	(KPT26) Flat Roof Steel Mounting System With Aluminum Purlin & 2 Horizontal Panels
Mounting Method:	Roof Floor Mounting
Module Application:	Framed and Unframed
Column and Beam Coating:	EN ISO 1461
Column and Beam Material:	EN 10025 / EN 10029
Optional Beam Material:	EN 10346
Panel Retainer:	EN AW 6063
Purlin Material:	EN AW 6063
Connector Equipment:	DIN 934 / DIN933 / DIN 912, A2-70 DIN 50979