

Gel battery shows some distinctive advantages over flooded battery or AGM battery, such as super thermal stability, high deep discharge capability, good recovery from deep discharge, even if the battery is left discharged for three days, it will recover to 100% of capacity. With the above-mentioned advantages, the gel battery has long service life, specially suitable for motive power applications, such as golf trailer, srubber, folklift, etc.



Battery Construction

| Component | Positive plate | Negative plate | Container | Cover | Safety valve | Terminal | Separator | Electrolyte |
|--------------|----------------|----------------|-----------|-------|--------------|----------|------------|-------------------|
| Raw material | Lead dioxide | Lead | ABS | ABS | Rubber | Copper | Fiberglass | Colloidal silicon |

General Feature

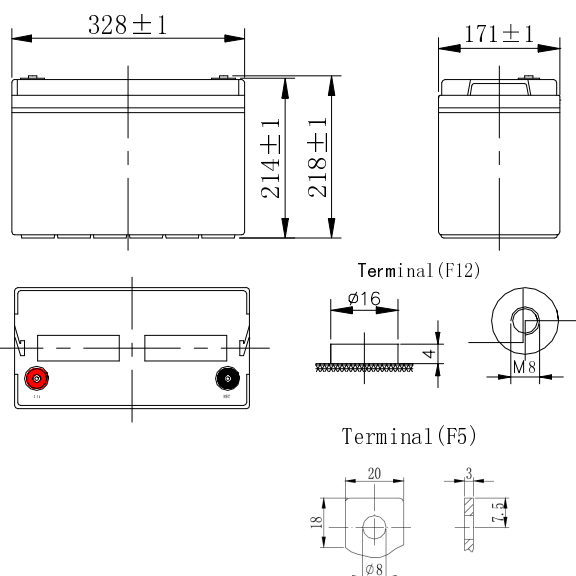
- Micro millimeter SiO₂ and H₂SO₄ technology for Efficient gas recombination of up to 99% and Freedom from electrolyte maintenance or water adding.
- Not restricted for air transport-complies with IATA/ICAO Special Provision A67.
- UL-recognized component.
- Can be mounted in any orientation.
- Computer designed lead, calcium tin alloy grid for high power density.
- Long service life, float or cyclic applications.
- Maintenance-free operation.
- Low self discharge.

Performance Characteristics

| | | |
|--|---|--------|
| Capacity 77°F(25°C) | 20 hour rate (5A、10.5V) | 100Ah |
| | 10 hour rate (9.5A、10.5V) | 95Ah |
| | 5 hour rate (17.5A、10.5V) | 87.5Ah |
| | 1 hour rate (65A、9.6V) | 65Ah |
| Internal Resistance | Full charged Battery 77°F(25°C): 6 mΩ | |
| Operating Temperature Range | Discharge: -20~60°C | |
| | Charge: -10~60°C | |
| | Storage: -20~60°C | |
| Self-Discharge 3% of capacity declined per month at 20°C(average) | | |
| Max. discharge current 77°F(25°C): 1000A(5S) | | |
| Charge (Constant Voltage) | Float: 13.5 ~13.8V/77 ° F(25°C) | |
| | Cycle: 14.4 ~14.9 V/77°F(25°C) Max. Current: 25A | |

SPECIFICATION

Nominal voltage 12V
 Number of cell 6
 Length(mm/inch) 328/12.9
 Width(mm/inch) 171/6.73
 Height(mm/inch) 214/8.43
 Total Height(mm/inch) 218/8.58
 Approx. Weight(kg/lbs) 30.0/66.0



Discharge Constant Current (Amperes at 77° F25°C)

| End Point Volts/Cell | 5min | 10min | 15min | 30min | 1h | 3h | 5h | 10h | 20h |
|----------------------|------|-------|-------|-------|------|------|------|------|------|
| 1.60V | | 228 | 189 | 110 | 65.0 | 27.5 | 19.0 | 9.70 | 5.10 |
| 1.65V | | 218 | 182 | 108 | 63.5 | 26.5 | 18.8 | 9.60 | 5.05 |
| 1.70V | | 208 | 175 | 106 | 61.2 | 25.0 | 18.4 | 9.58 | 5.03 |
| 1.75V | | 196 | 166 | 100 | 58.4 | 24.4 | 17.5 | 9.50 | 5.00 |
| 1.80V | | 185 | 156 | 95.0 | 55.6 | 23.2 | 17.0 | 9.10 | 4.85 |

Discharge Constant Power (watts at 77° F25°C)

| End Point Volts/Cell | 5min | 10min | 15min | 30min | 45min | 1h | 2h | 3h | 5h |
|----------------------|------|-------|-------|-------|-------|-----|------|------|------|
| 1.60V | | 380 | 326 | 212 | 162 | 126 | 77.0 | 57.0 | 38.5 |
| 1.65V | | 365 | 316 | 208 | 160 | 125 | 75.6 | 55.6 | 37.5 |
| 1.70V | | 348 | 305 | 205 | 157 | 122 | 73.5 | 54.2 | 36.9 |
| 1.75V | | 332 | 294 | 198 | 153 | 119 | 70.8 | 52.6 | 36.0 |
| 1.80V | | 313 | 280 | 189 | 149 | 116 | 68.6 | 51.2 | 35.6 |

(Note)The above characteristics data are average values obtained Within three charge/discharge cycles not the minimum values.

