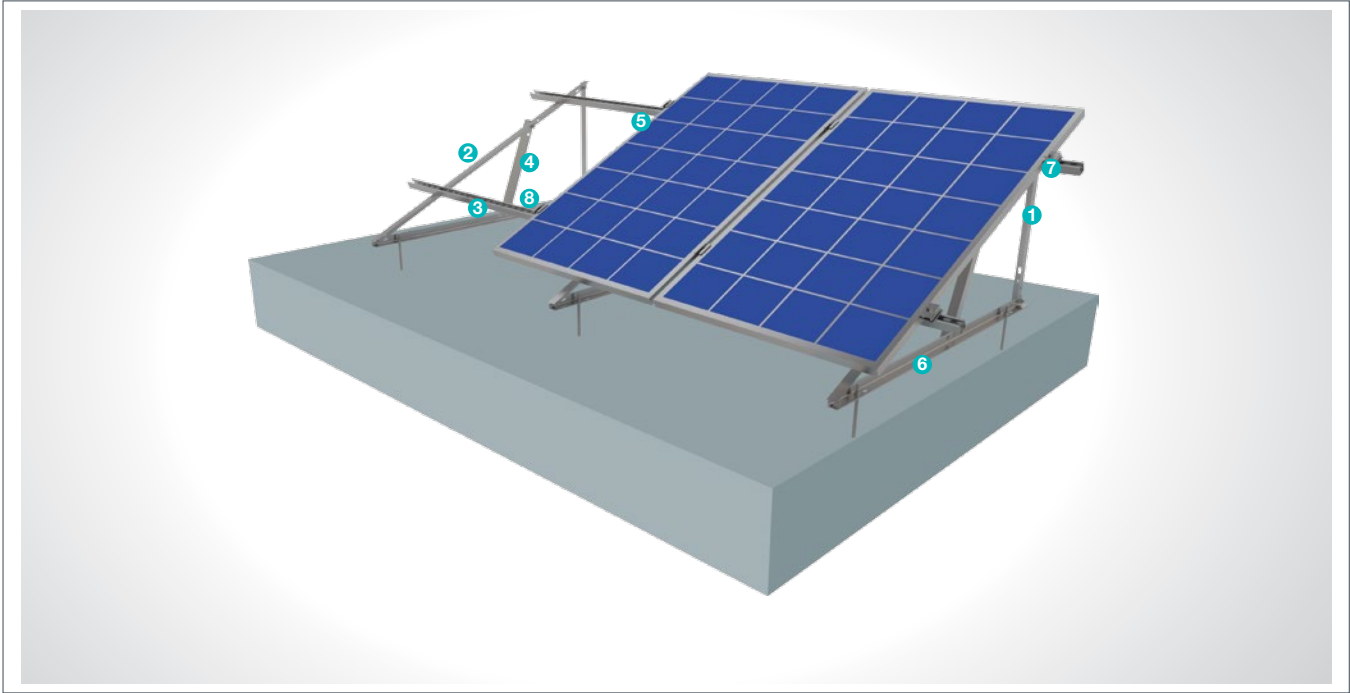


## (KPT23) Eco Series Flat Roof Steel Mounting System with 1 Vertical Panel

### Overview

KPT23, is a flat roof steel mounting system with 1 vertical panel. The system is an optimal application solution for installations of PV projects on large and small-sized roofs. After manufacturing the system components with high-technology machines and equipment, an excellent corrosion resistance is then achieved through hot-dip galvanized coating. The system, incorporating a high-level engineering design, provides assembly and cost advantages.



#### L BRACKET COLUMN

1



- **LK-40x40**  
M12X30 Knurled Bolt  
M12 Flanged Nut  
M8/M12 Washer

#### L BRACKET COLUMN

2



- **LR-40x40**  
M12X30 Knurled Bolt  
M12 Flanged Nut  
M12 Washer

#### STEEL PROFILE

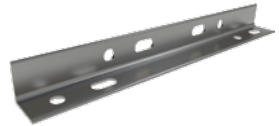
3



- **CP-41x41**  
M12X30 Knurled Bolt  
M12 Flanged Nut  
M8X30 Hex Bolt  
M8 Flanged Nut  
M8/M12 Washer

#### L BRACKET DIAGONAL

4



- **LD-40X40**  
M12X30 Knurled Bolt  
M12 Flanged Nut  
M12 Washer

#### PURLIN CONNECTOR JOINING PIECE

5



- **C41**  
M12X30 Knurled Bolt  
M12 Flanged Nut  
M12 Washer

#### L BRACKET ANCHOR

6



- **LA 40x40**  
M12X30 Knurled Bolt  
M12 Flanged Nut  
M12 Washer

#### PANEL SIDE RETAINER

7



- **H30-H32-H40**  
M8X30 Hex Bolt  
M8 Rectangular Nut

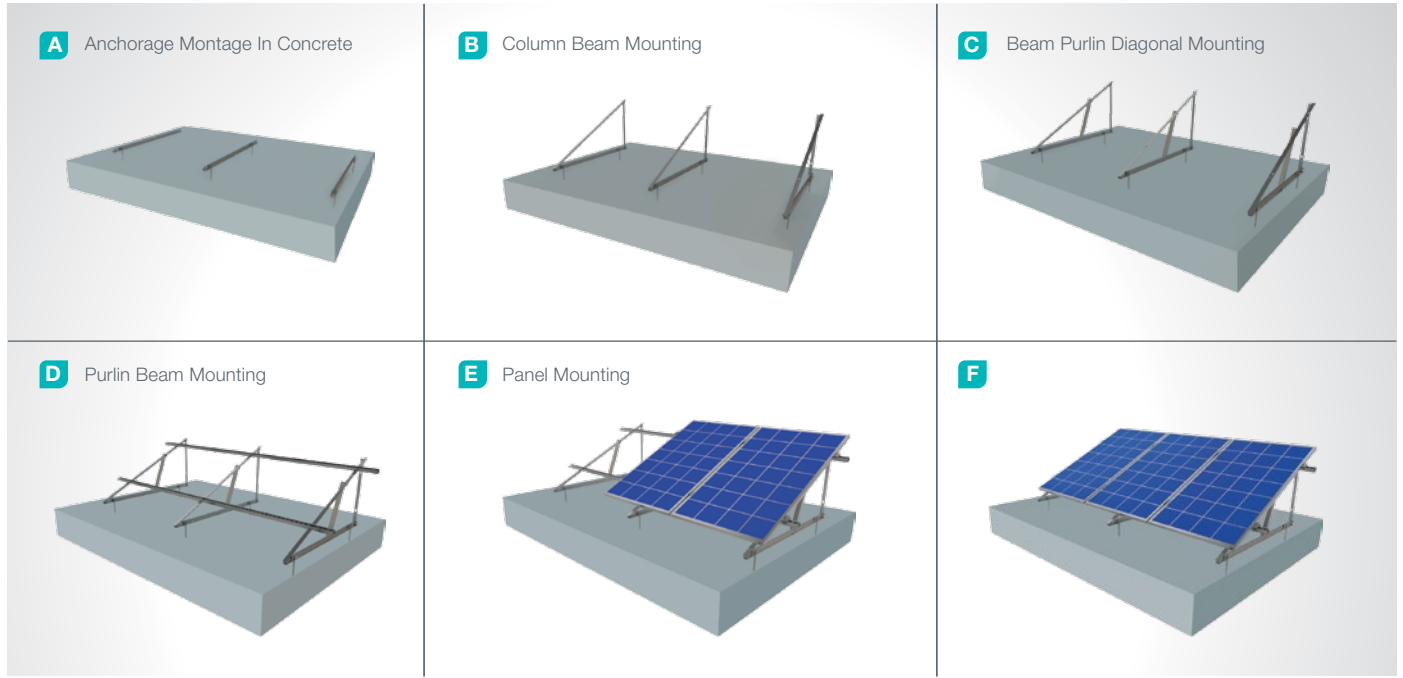
#### PANEL CENTER RETAINER

8



- **L70**  
M8X30 Hex Bolt  
M8 Rectangular Nut

## Installation Phase



## Advantages

- Time saving for installation
- Cost saving for installation
- Suitable solutions for different roof types
- 3 different types of angular adjustment
- Affordable solution
- Ballasted Mounting
- Tailored design solutions for customer
- Customer oriented engineering solutions

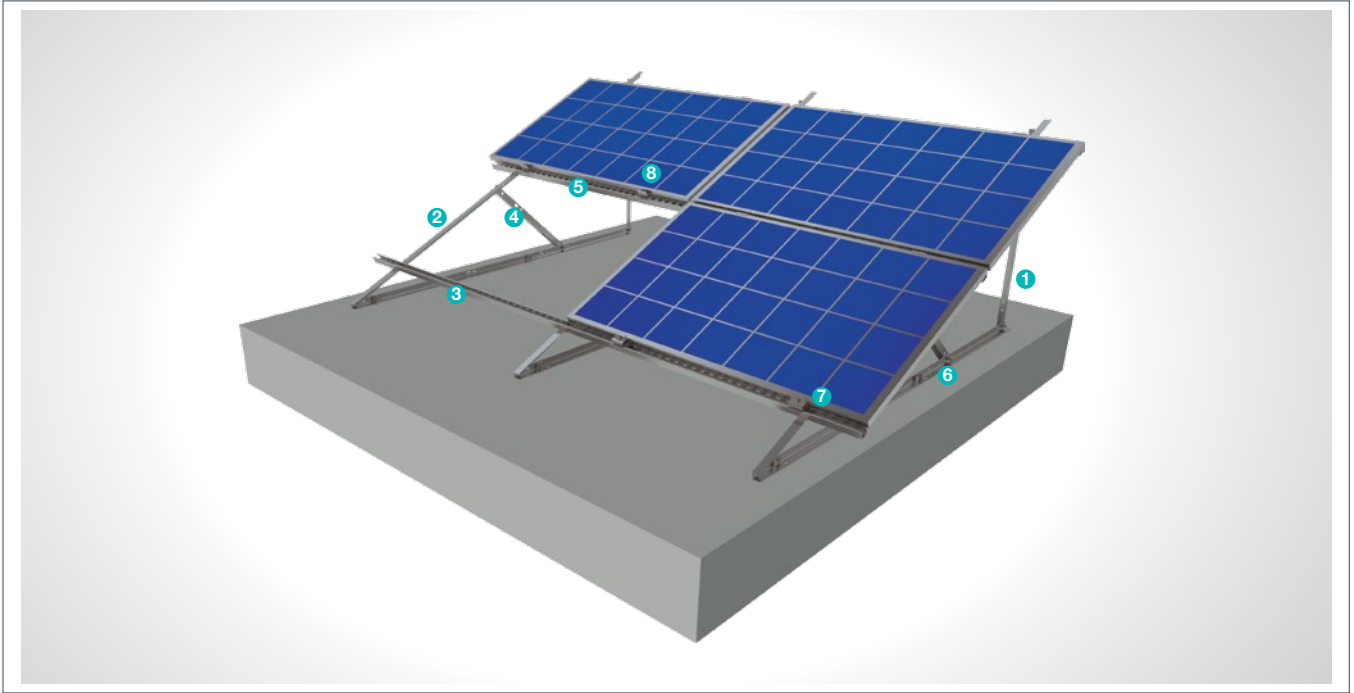
## Technical Specifications

Description:	(KPT23) Eco Series Flat Roof Steel Mounting System with 1 Vertical Panel
Mounting Method:	Roof Floor Mounting
Module Application:	Framed and Unframed
Column and Beam Coating:	EN ISO 1461
Column and Beam Material:	EN 10025 / EN 10029
Optional Beam Material:	EN 10346
Panel Retainer:	EN AW 6063
Connector Equipment:	DIN 934 / DIN933 / DIN 912, A2-70 DIN 50979

## (KPT24) Eco Series Flat Roof Steel Mounting System with 2 Horizontal Panels

### Overview

KPT24, is a flat roof steel mounting system with 2 vertical panels. The system is an optimal application solution for installations of PV projects on large and small-sized roofs. After manufacturing the system components with high-technology machines and equipment, an excellent corrosion resistance is then achieved through hot-dip galvanized coating. The system, incorporating a high-level engineering design, provides assembly and cost advantages.



#### L BRACKET COLUMN

1



- **LK-40x40**  
M12X30 Knurled Bolt  
M12 Flanged Nut  
M8/M12 Washer

#### L BRACKET BEAM

2



- **LR-40x40**  
M12X30 Knurled Bolt  
M12 Flanged Nut  
M12 Washer

#### STEEL BEAM

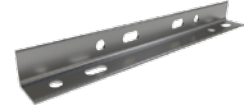
3



- **CP-41x41**  
M12X30 Knurled Bolt  
M12 Flanged Nut  
M8X30 Hex Bolt  
M8 Flanged Nut  
M8/M12 Washer

#### L BRACKET DIAGONAL

4



- **LD-40X40**  
M12X30 Knurled Bolt  
M12 Flanged Nut  
M12 Washer

#### PURLIN CONNECTOR JOINING PIECE

5



- **C41**  
M12X30 Knurled Bolt  
M12 Flanged Nut  
M12 Washer

#### L BRACKET ANCHOR

6



- **LA 40x40**  
M12X30 Knurled Bolt  
M12 Flanged Nut  
M12 Washer

#### PANEL SIDE RETAINER

7



- **H30-H32-H40**  
M8X30 Hex Bolt  
M8 Rectangular Nut

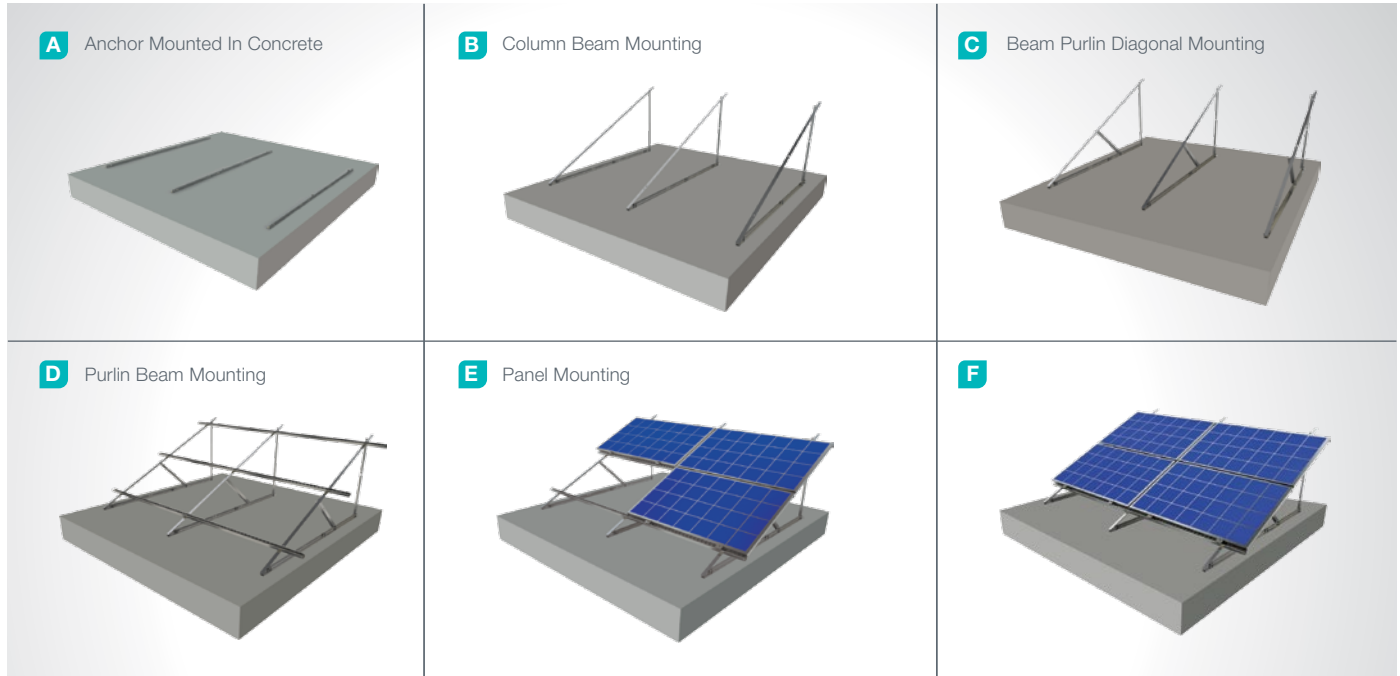
#### PANEL CENTER RETAINER

8



- **L70**  
M8X30 Hex Bolt  
M8 Rectangular Nut

## Installation Phase



## Advantages

- Time saving for installation
- Cost saving for installation
- Suitable solutions for different roof types
- 3 different types of angular adjustment
- Affordable solution
- Ballasted Mounting
- Tailored design solutions for customer
- Customer oriented engineering solutions

## Technical Specifications

Description:	(KPT24) Eco Series Flat Roof Steel Mounting System with 2 Horizontal Panels
Mounting Method:	Roof Floor Mounting
Module Application:	Framed and Unframed
Column and Beam Coating:	EN ISO 1461
Column and Beam Material:	EN 10025 / EN 10029
Optional Beam Material:	EN 10346
Panel Retainer:	EN AW 6063
Connector Equipment:	DIN 934 / DIN933 / DIN 912, A2-70 DIN 50979