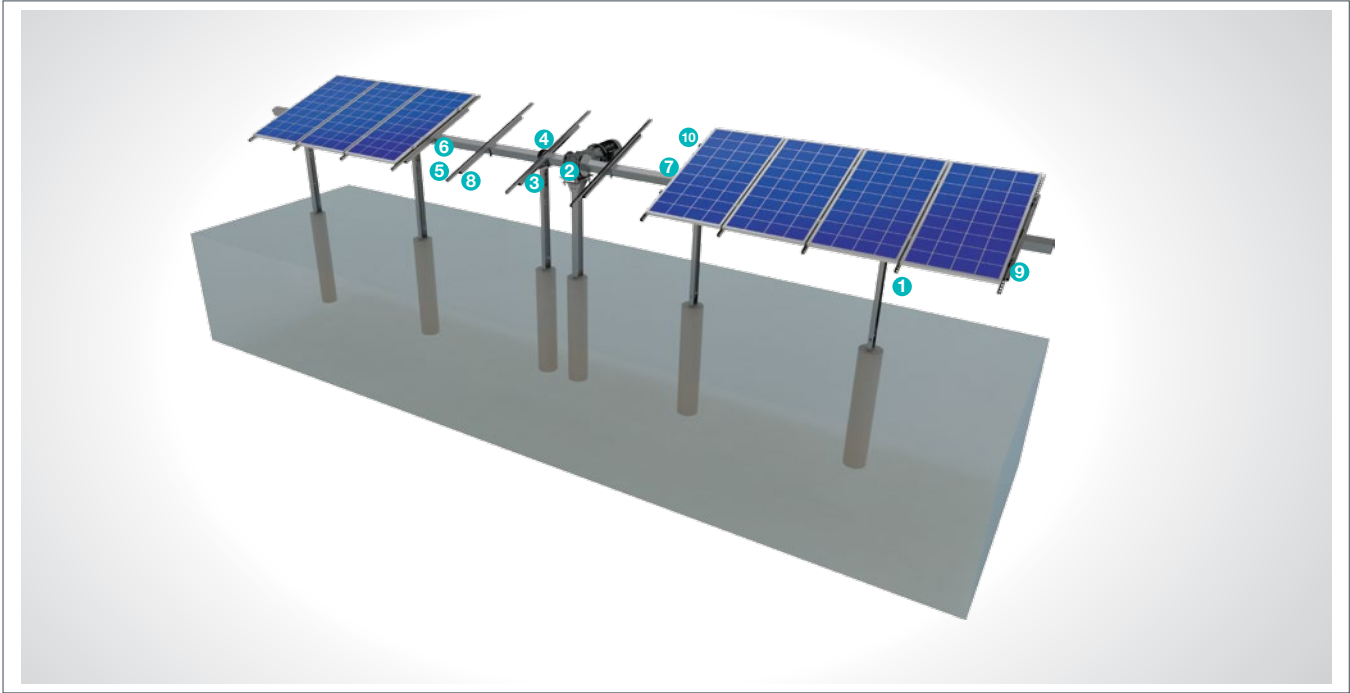


(KPT19) Concrete Embedded Steel Single Axis Solar Tracking System with 1 Vertical Panel

Overview

KPT19, is a concrete embedded steel support and mounting system which tracks the sun with 1 vertical panel for open terrain solar panels. The system is an optimal application solution for installations of PV projects on large and medium-sized terrains. After manufacturing the system components with high-technology machines and equipment, an excellent corrosion resistance is then achieved through hot-dip galvanized coating. The system, incorporating a high-level engineering design, provides assembly and cost advantages. It provides a more efficient use of solar panels.



STEEL COLUMN



- **CK-150**
M12X30 Knurled Bolt
M12 Flanged Nut
M12 Washer

STEEL ENGINE SUPPORT



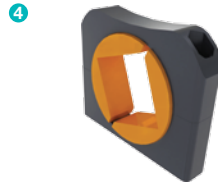
- **NPI 160x82x7,4**
M12X150 Tij
M12 Flanged Nut
M12 Washer
M12x30 Knurled Bolt

STEEL T/TP



- **CT**
M12X30 Knurled Bolt
M12 Flanged Nut
M16X180 Knurled Bolt
M16 Flanged Nut
M16/M12 Washer

TP



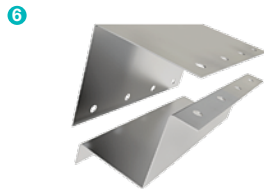
- **TP-100 / TP-110**
M16X180 Knurled Bolt
M16 Flanged Nut
M16 Washer

STEEL PROFILE



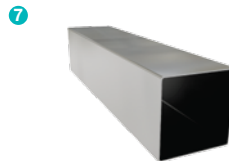
- **CP41x41**
M12X110 Square Bolt
M12 Flanged Nut
M12 Square Bolt Washer

PURLIN CONNECTOR JOINING PIECE



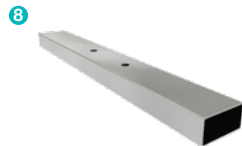
- **KPE**
M12X30 Knurled Bolt
M12 Flanged Nut
M12 Washer

STEEL SQUARE PURLIN



- **KPA**
M12X30 Knurled Bolt
M12 Flanged Nut
M12 Washer

STEEL RECTANGLE RAFTER



- **DPM-80x40**
M12X110 Square Bolt
M12 Flanged Nut
M12 Square Bolt Washer

PANEL CENTER RETAINER

9



- L70
M8X30 Hex Bolt
M8 Rectangular Nut

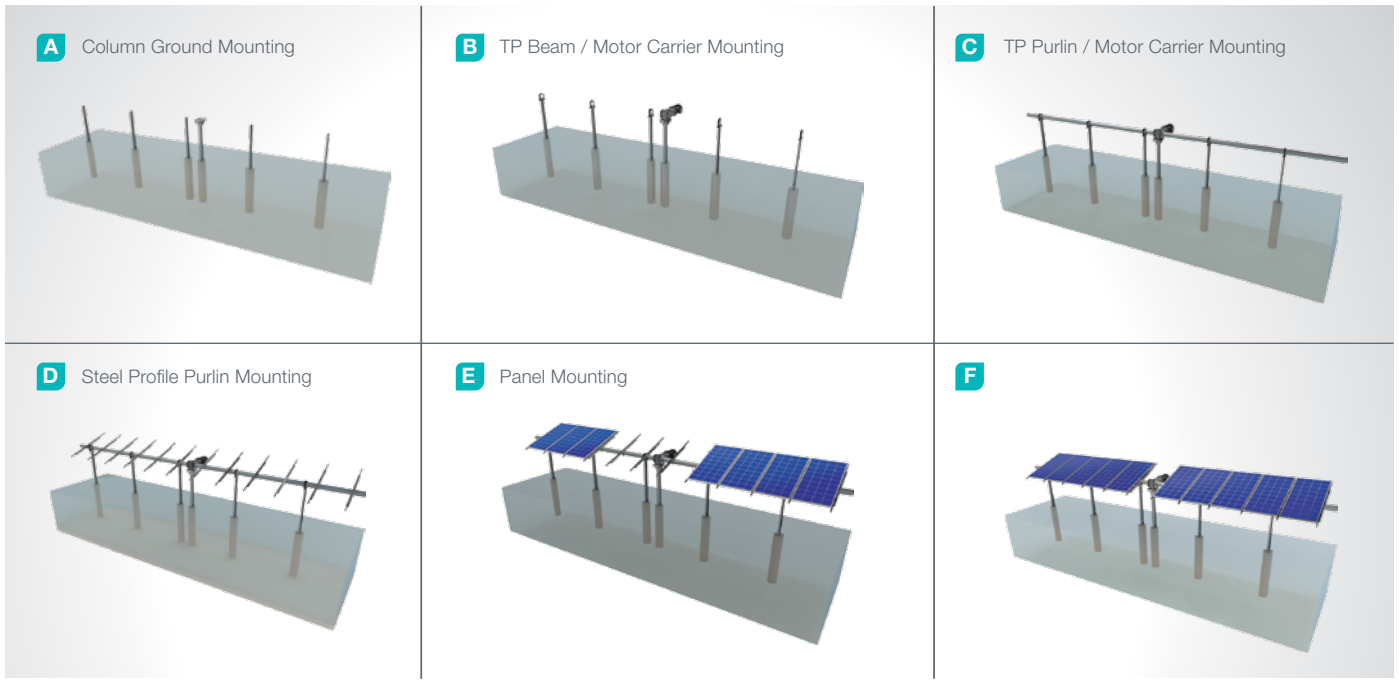
PANEL SIDE RETAINER

10



- H30-H32-H40
M8X30 Hex Bolt
M8 Rectangular Nut

Installation Phase



Advantages

- Time saving for installation
- Cost saving for installation
- Flexible solutions for different types of terrains
- Up to 25% efficiency advantage
- Low maintenance cost
- Independent rack movements
- Aluminum based solutions
- Smart control system
- Real time tracking
- Tailored design solutions for customer
- Customer oriented engineering solutions

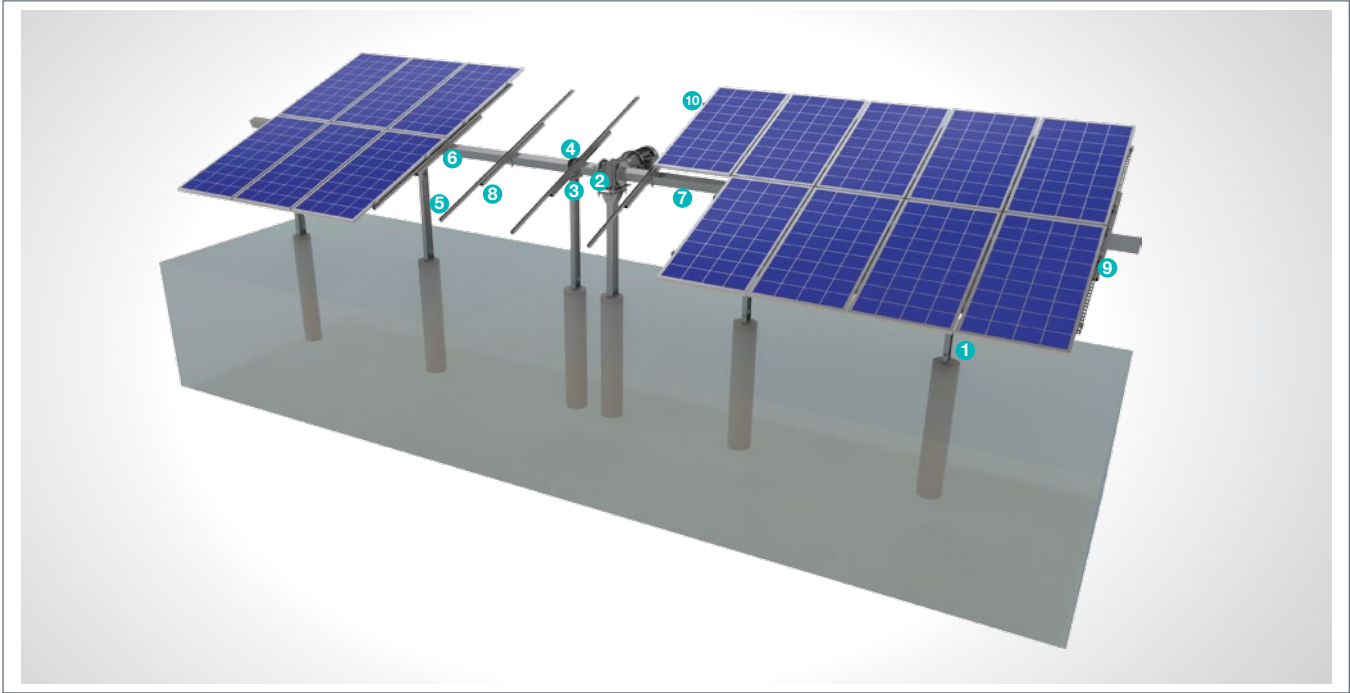
Technical Specifications

Description:	(KPT19) Concrete Embedded Steel Single Axis Solar Tracking System with 1 Vertical Panel
Mounting Method:	Concrete Embedded
Tilt Angle:	0-60 degrees
Module Application:	Framed and Unframed
Panel Height From Ground:	60 cm
Column and Beam Coating:	EN ISO 1461
Column and Beam Material:	EN 10025 / EN 10029
Optional Beam Material:	EN 10346
Panel Retainer:	EN AW 6063
Connector Equipment:	DIN 934 / DIN933 / DIN 912, A2-70 DIN 50979

(KPT20) Concrete Embedded Steel Single Axis Solar Tracking System with 2 Vertical Panels

Overview

KPT20, is a concrete embedded steel support and mounting system which tracks the sun with 2 vertical panels for open terrain solar panels. The system is an optimal application solution for installations of PV projects on large and medium-sized terrains . After manufacturing the system components with high-technology machines and equipment, an excellent corrosion resistance is then achieved through hot-dip galvanized coating. The system, incorporating a high-level engineering design, provides assembly and cost advantages. It provides a more efficient use of solar panels.



STEEL COLUMN



- **CK-150**
M12X30 Knurled Bolt
M12 Flanged Nut
M12 Washer

STEEL PROFILE



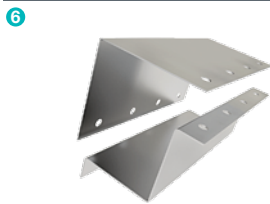
- **CP41x41**
M12X110 Square Bolt
M12 Flanged Nut
M12 Square Bolt Washer

STEEL ENGINE SUPPORT



- **NPI 160x82x7,4**
M12X150 Rod
M12 Flanged Nut
M12 Washer
M12x30 Knurled Bolt

PURLIN CONNECTOR JOINING PIECE



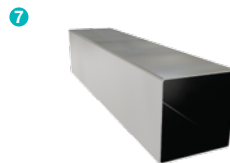
- **KPE**
M12X30 Knurled Bolt
M12 Flanged Nut
M12 Washer

STEEL T/TP



- **CT**
M12X30 Knurled Bolt
M12 Flanged Nut
M16X180 Knurled Bolt
M16 Flanged Nut
M16/M12 Washer

STEEL SQUARE PURLIN



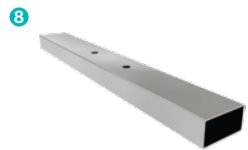
- **KPA**
M12X30 Knurled Head Bolt
M12 Flanged Nut
M12 Washer

TP



- **TP-100 / TP-110**
M16X180 Knurled Bolt
M16 Flanged Nut
M16 Washer

STEEL RECTANGLE RAFTER



- **DPM-80x40**
M12X110 Square Bolt
M12 Flanged Nut
M12 Square Bolt Washer

PANEL CENTER RETAINER

9



- L70
- M8X30 Hex Bolt
- M8 Rectangular Nut

PANEL SIDE RETAINER

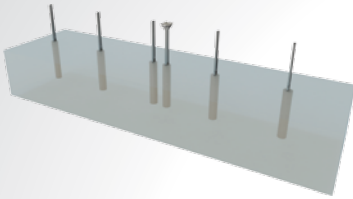
10



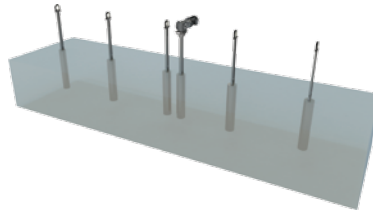
- H30-H32-H40
- M8X30 Hex Bolt
- M8 Rectangular Nut

Installation Phase

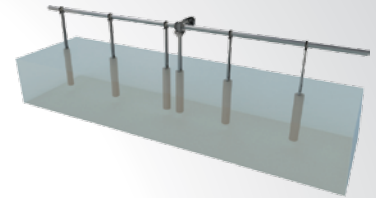
A Column Ground Mounting



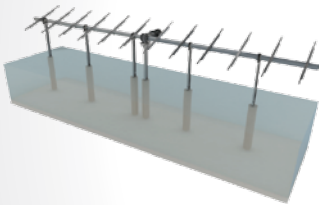
B TP Column / Engine Support Mounting



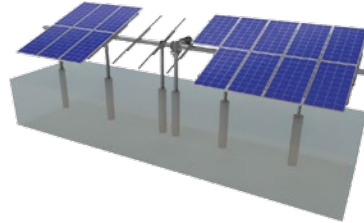
C TP Purlin / Engine Mounting



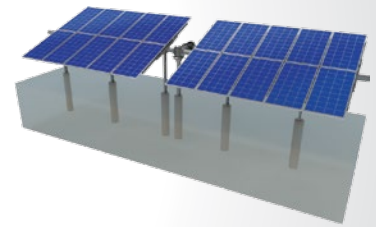
D Steel Profile Purlin Mounting



E Panel Mounting



F



Advantages

- Time saving for installation
- Cost saving for installation
- Flexible solutions for different types of terrains
- Up to 25% efficiency advantage
- Low maintenance cost
- Independent rack movements
- Aluminum based solutions
- Smart control system
- Real time tracking
- Tailored design solutions for customer
- Customer oriented engineering solutions

Technical Specifications

Description:	(KPT20) Concrete Embedded Steel Single Axis Solar Tracking System with 2 Vertical Panels
Mounting Method:	Concrete Embedded
Tilt Angle:	0-60 degrees
Module Application:	Framed and Unframed
Panel Height from Ground:	60 cm
Column and Beam Coating:	EN ISO 1461
Column and Beam Material:	EN 10025 / EN 10029
Optional Beam Material:	EN 10346
Panel Retainer:	EN AW 6063
Connector Equipment:	DIN 934 / DIN933 / DIN 912, A2-70 DIN 50979